

Volume and Positive Rate

Volume and Positive Rate - Data as of **YTD for this data starts on the first Monday in October.



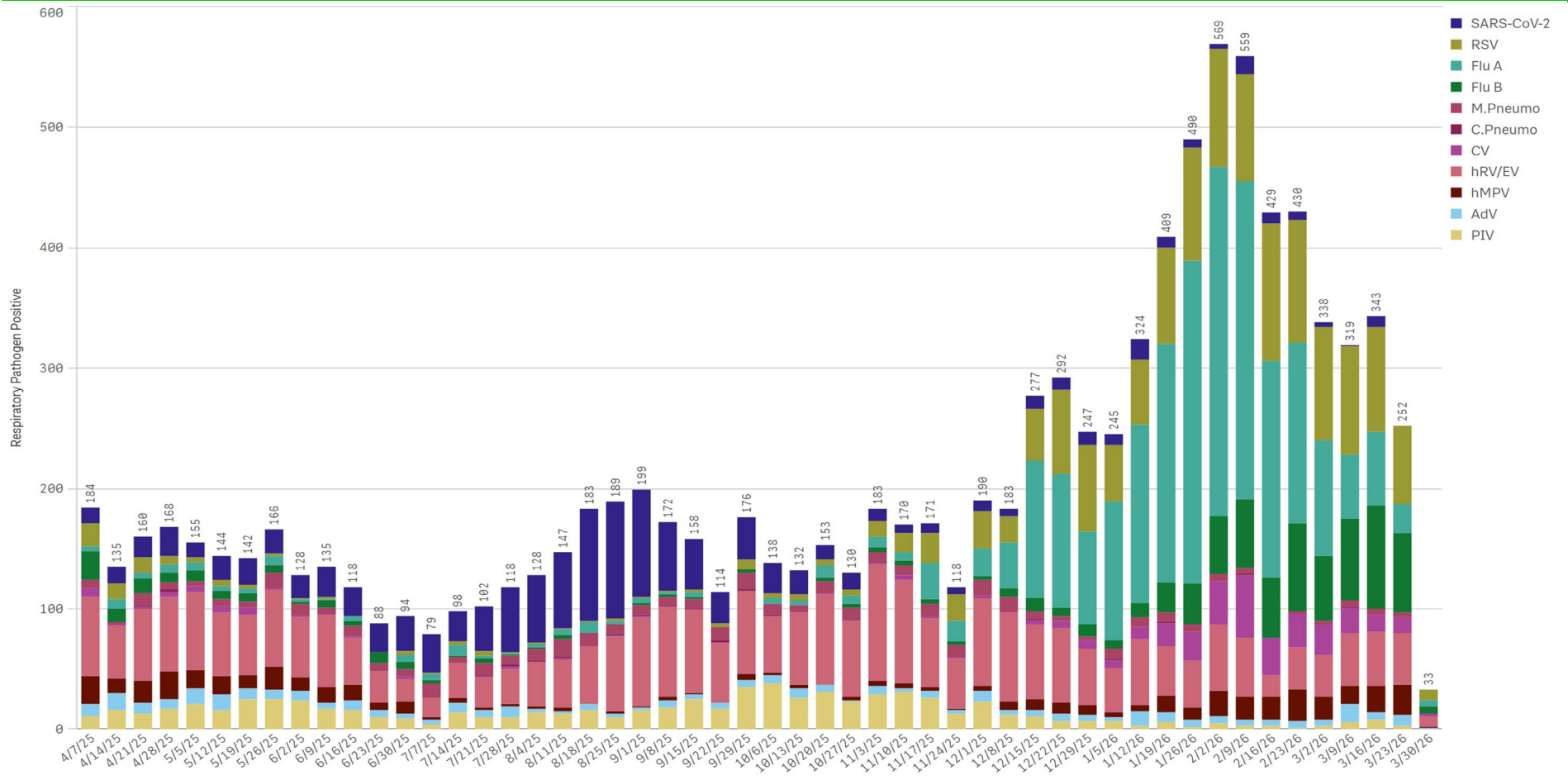
Component Group	Q	Pathogen Positive Previous Week 3/23/2026 - 3/29/2026	Pathogen Tests Previous Week 3/23/2026 - 3/29/2026	Previous Week Positive Rate	Pathogen Positive Current WTD* 3/30/2026 - 4/5/2026	Pathogen Tests Current WTD* 3/30/2026 - 4/5/2026	Current WTD** Positive Rate	Pathogen Tested YTD**	Pathogen Positive YTD**	Positive Rate YTD**
Totals		242	1,229	19.7%	30	141	21.3%	31,388	6,568	21%
Influenza B		66	622	10.6%	6	72	8.3%	14,945	645	4%
RSV		65	622	10.5%	9	72	12.5%	14,945	1,356	9%
Human Rhinovirus/Enterovirus		43	200	21.5%	9	22	40.9%	5,290	1,350	26%
Human Metapneumovirus		25	200	12.5%	1	22	4.5%	5,290	257	5%
Influenza A		21	622	3.4%	4	72	5.6%	14,945	2,080	14%
Coronavirus(other than COVID-19)		13	200	6.5%	2	22	9.1%	5,290	309	6%
Adenovirus		9	200	4.5%	1	22	4.5%	5,290	157	3%
B.Pertussis/Parapertussis		5	60	8.3%	0	5	0.0%	931	39	4%
Mycoplasma Pneumoniae		4	200	2.0%	0	22	0.0%	5,290	173	3%
Parainfluenza		3	200	1.5%	0	22	0.0%	5,290	322	6%
Chlamydia Pneumoniae		0	200	0.0%	0	22	0.0%	5,290	6	0%
COVID-19(SARS-CoV-2,PCR)		0	568	0.0%	0	70	0.0%	14,556	240	2%
Enterovirus,CSF		0	1	0.0%	0	0	-	5	0	0%

*Current WTD may not be a completed week, depending on when the data is being reviewed. Refer to data date on page header for reference.

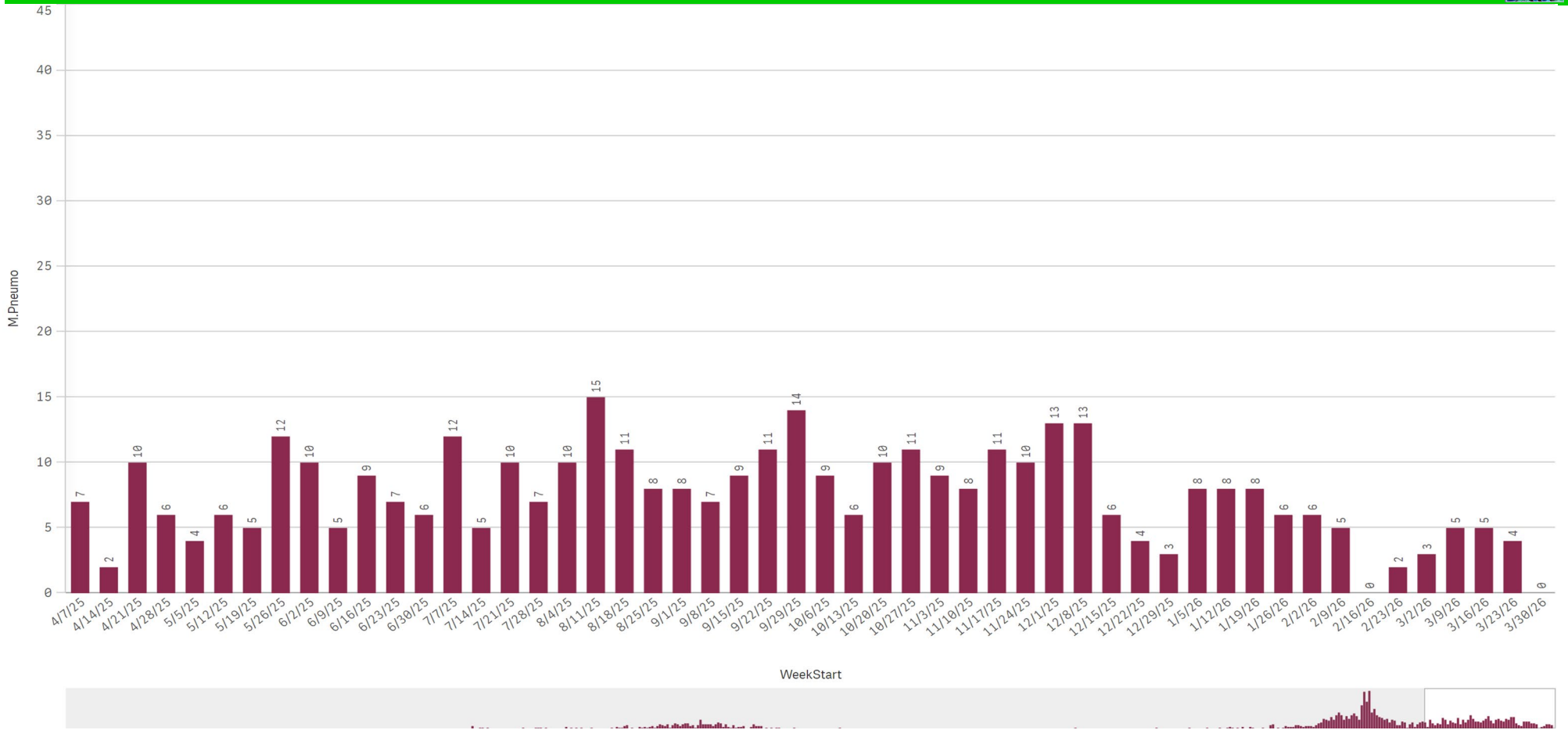
**YTD for this data starts on the first Monday in October.

*Current WTD may not be a complete week, depending on when data is being reviewed. Refer to data date on page header for reference.
**YTD for this data starts on the first Monday in October.

All Positive Respiratory Pathogens by Week Start - Data as of 03/30/2026



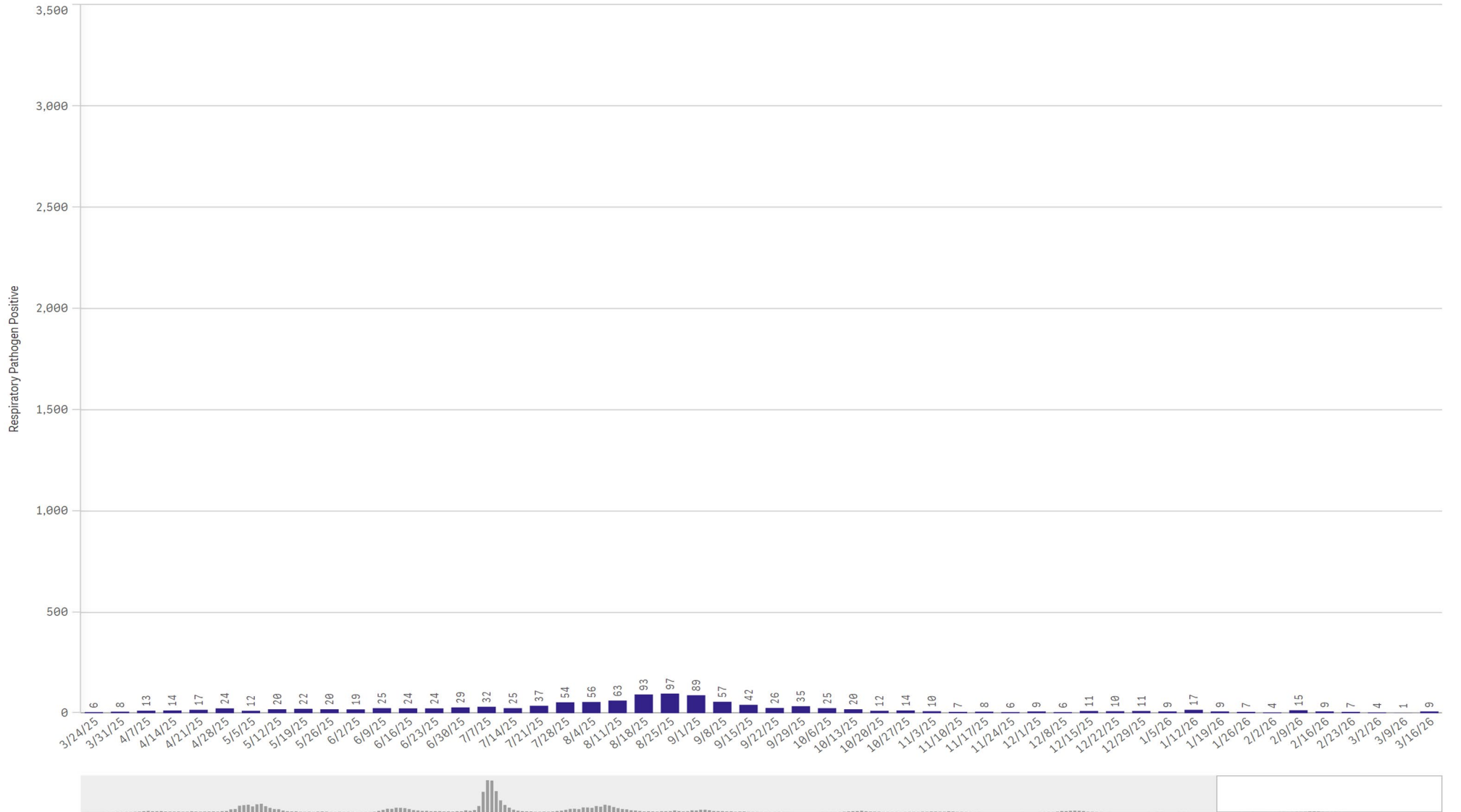
Mycoplasma Pneumonia Positive by Week Start - Data as of 03/30/2026



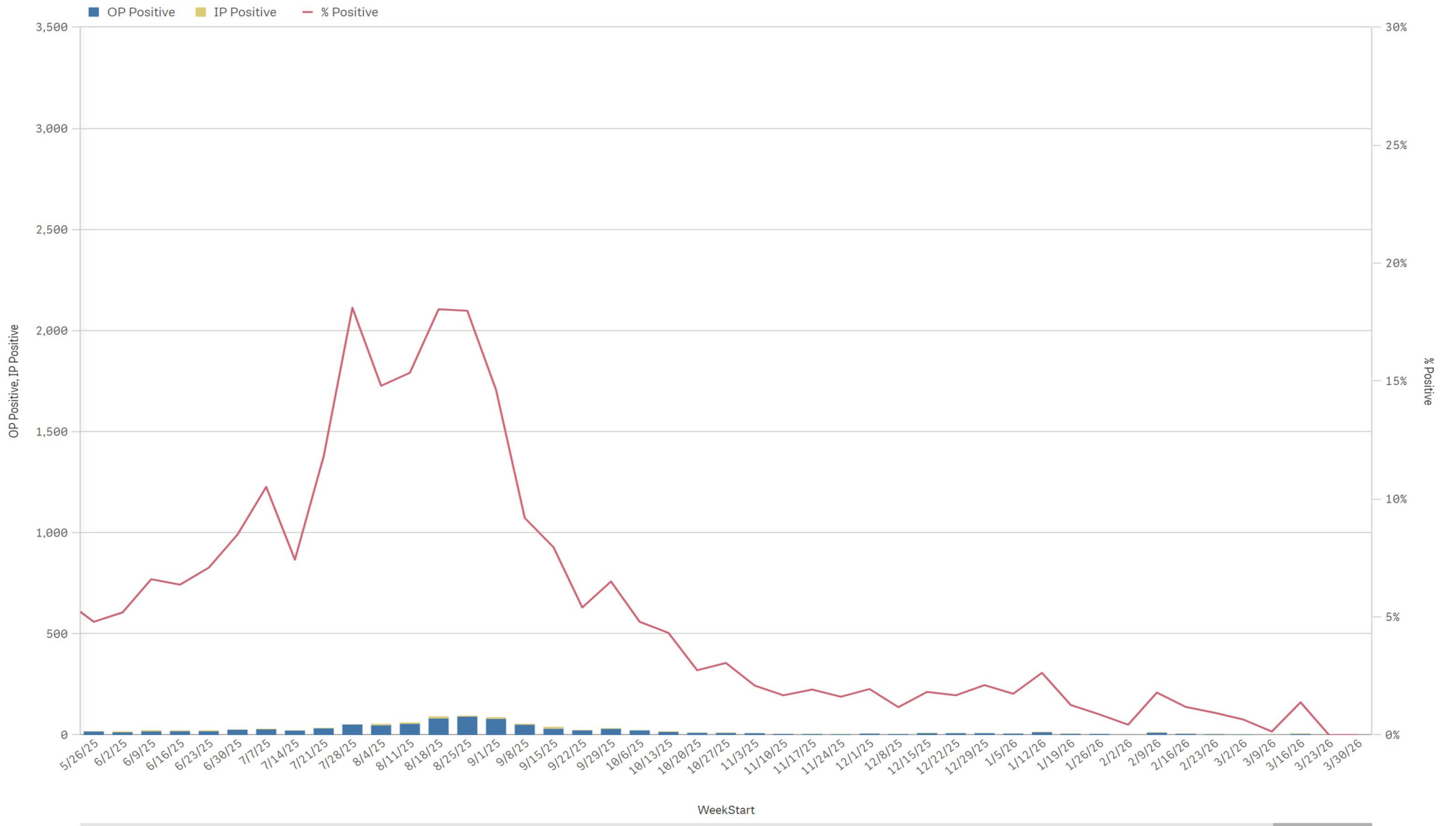
Positive SARS-CoV-2 Pathogens by Week Start - Data as of 03/30/2026



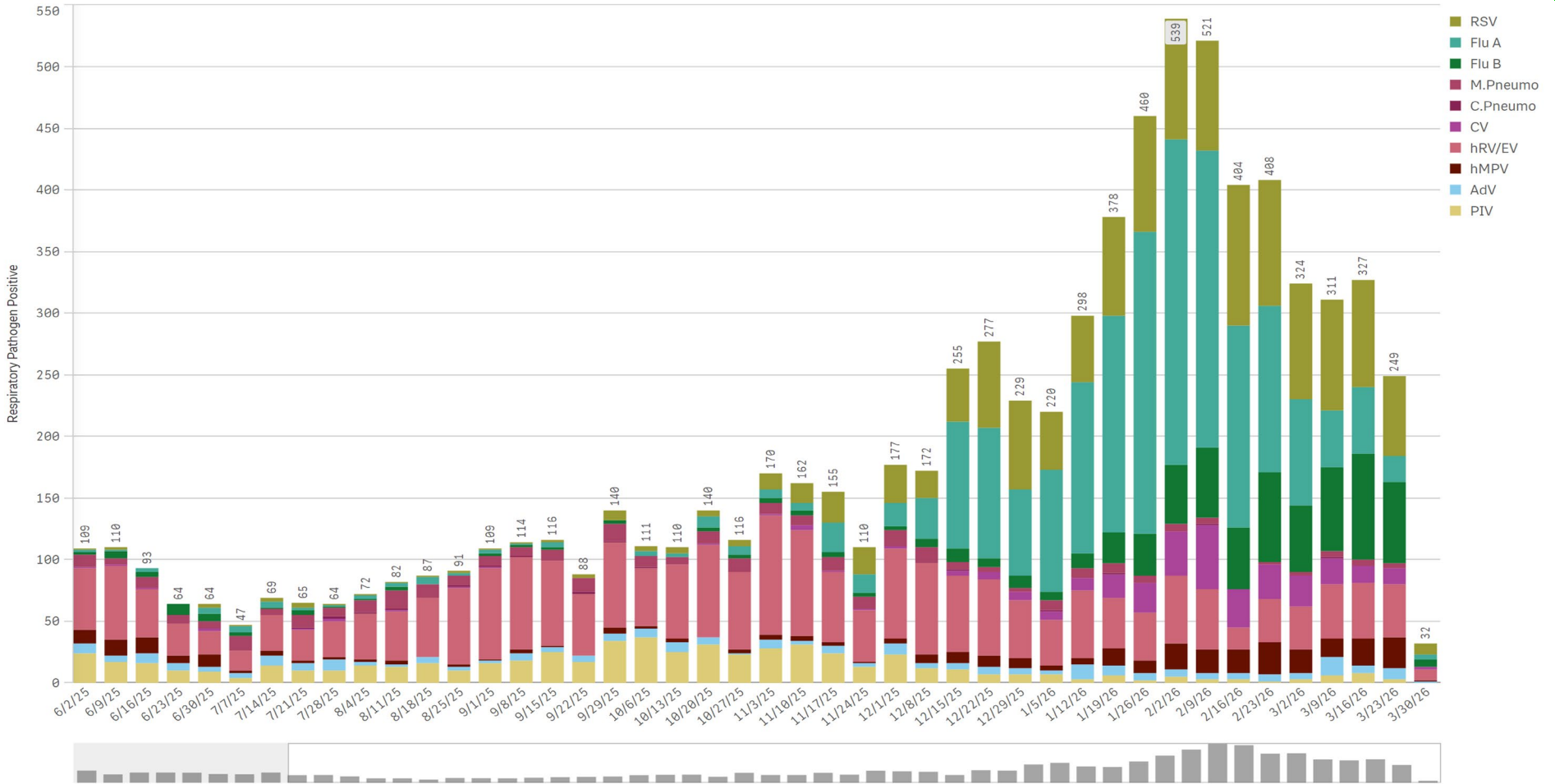
SARS-CoV-2 Positive Cases



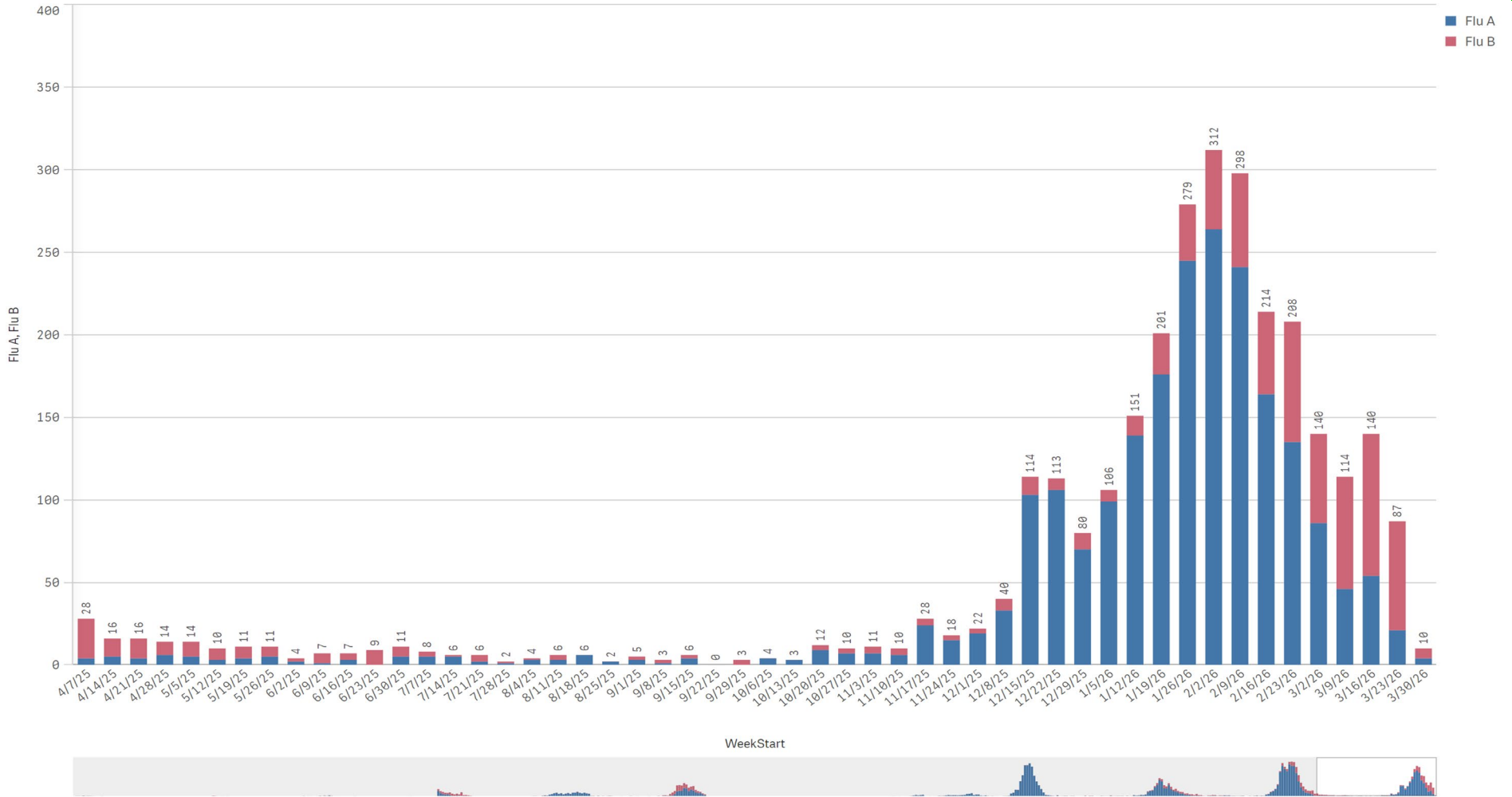
SARS-CoV-2 Positive by Encounter Type - Data as of 03/30/2026



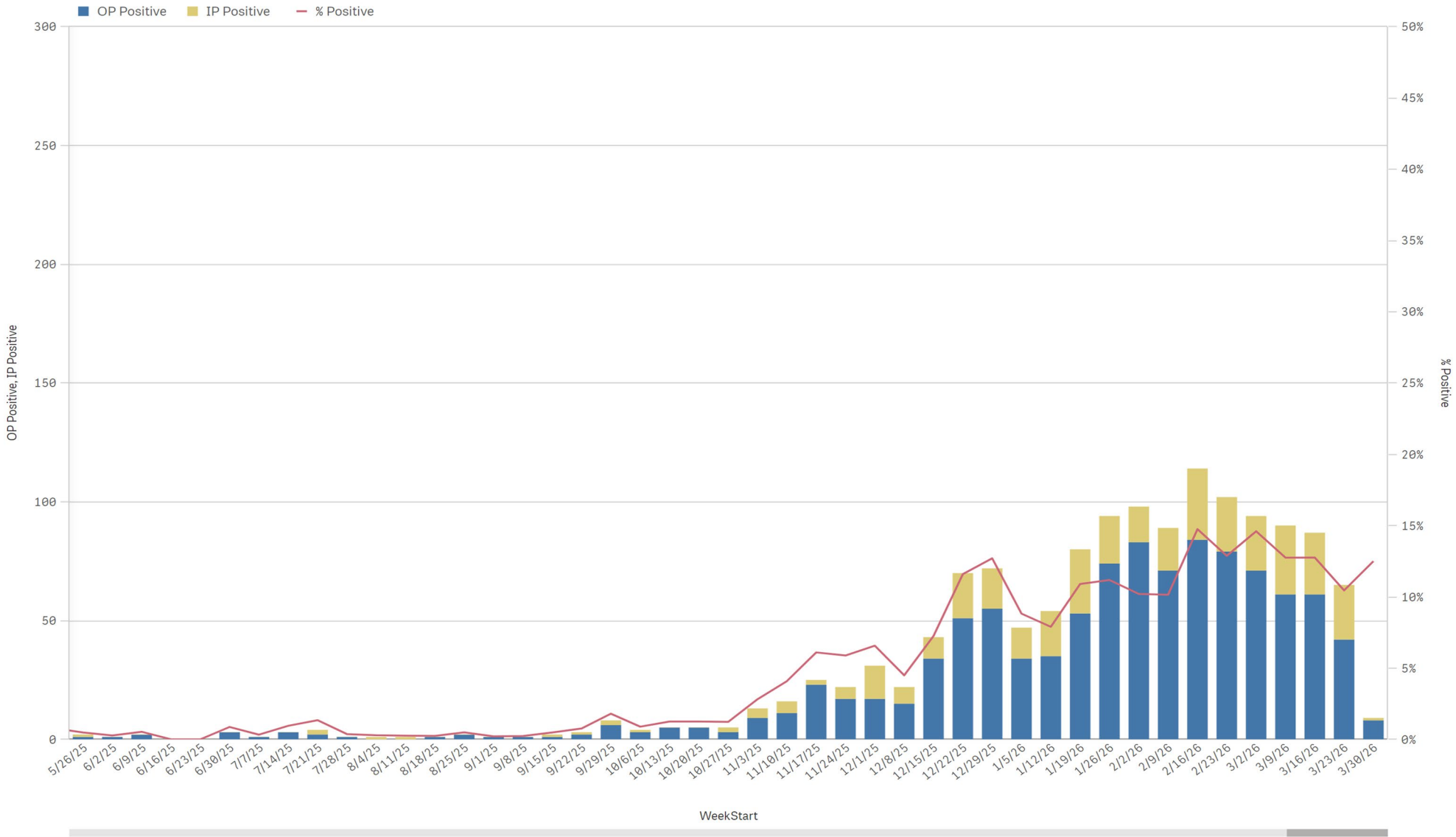
Positive Respiratory Pathogens by Week Start (excl SARS) - Data as of 03/30/2026



Influenza A & B Positive by Week Start - Data as of 03/30/2026



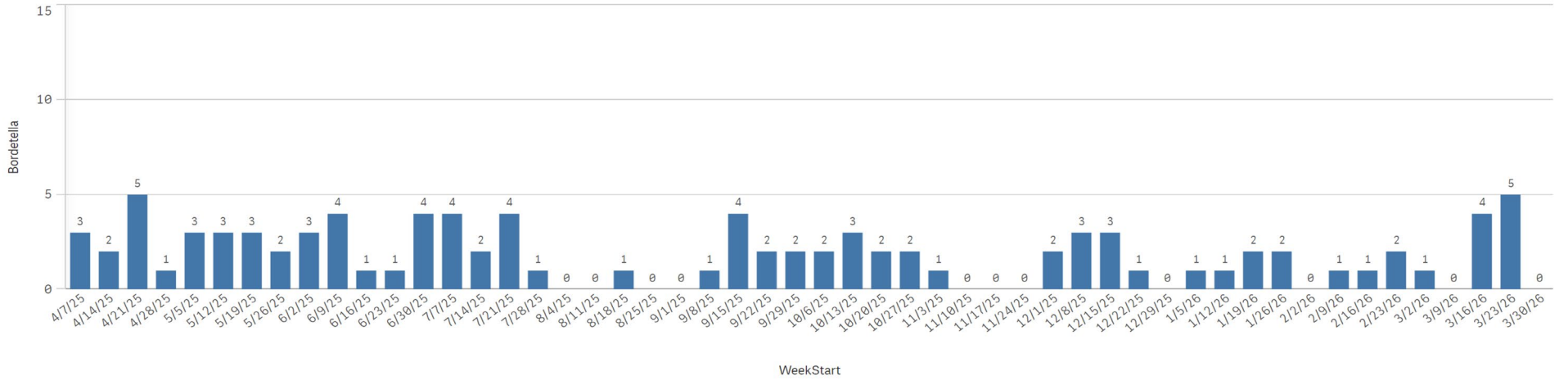
RSV - Data as of 03/30/2026



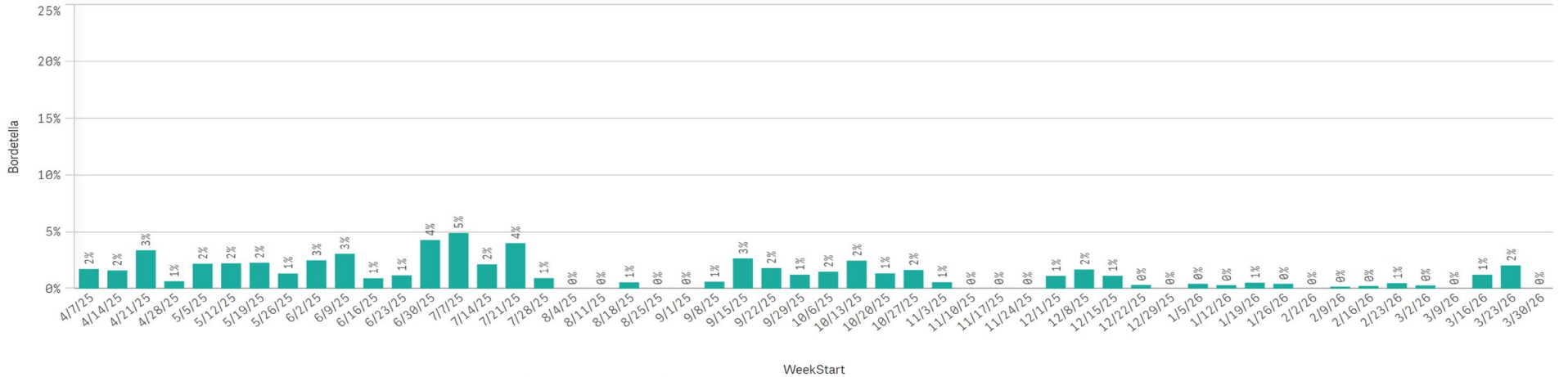
B. Pert/Parap Positives by Week Start - Data as of 03/30/2026



B. Pertussis/Parapertussis Positives by Week



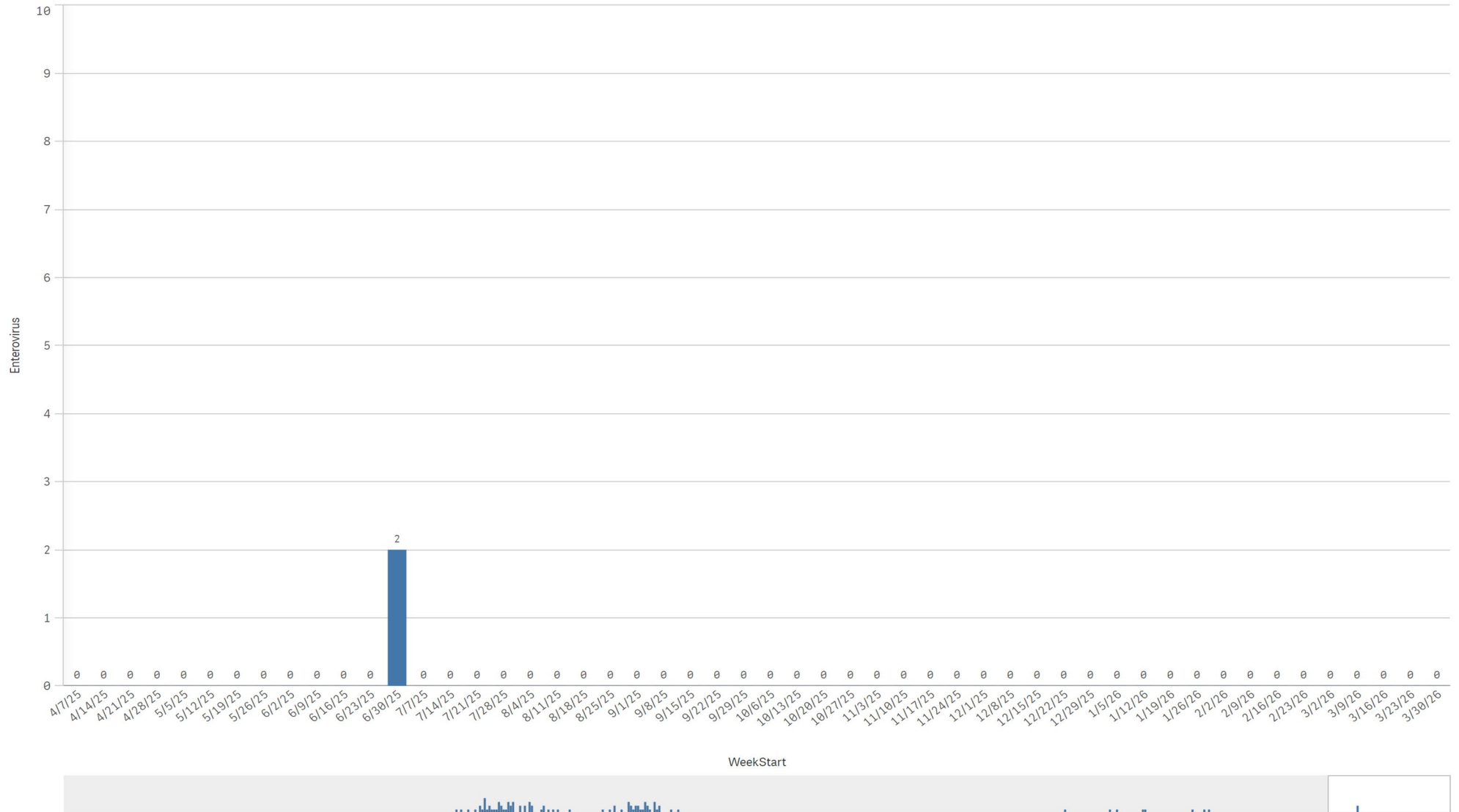
B.pertussis / B.parapertussis % Positive by Week



Enterovirus by Week Start - Data as of 03/30/2026



Enterovirus CSF Positive by Week



Enterovirus