

Volume and Positive Rate

Volume and Positive Rate - Data as of **YTD for this data starts on the first Monday in October.



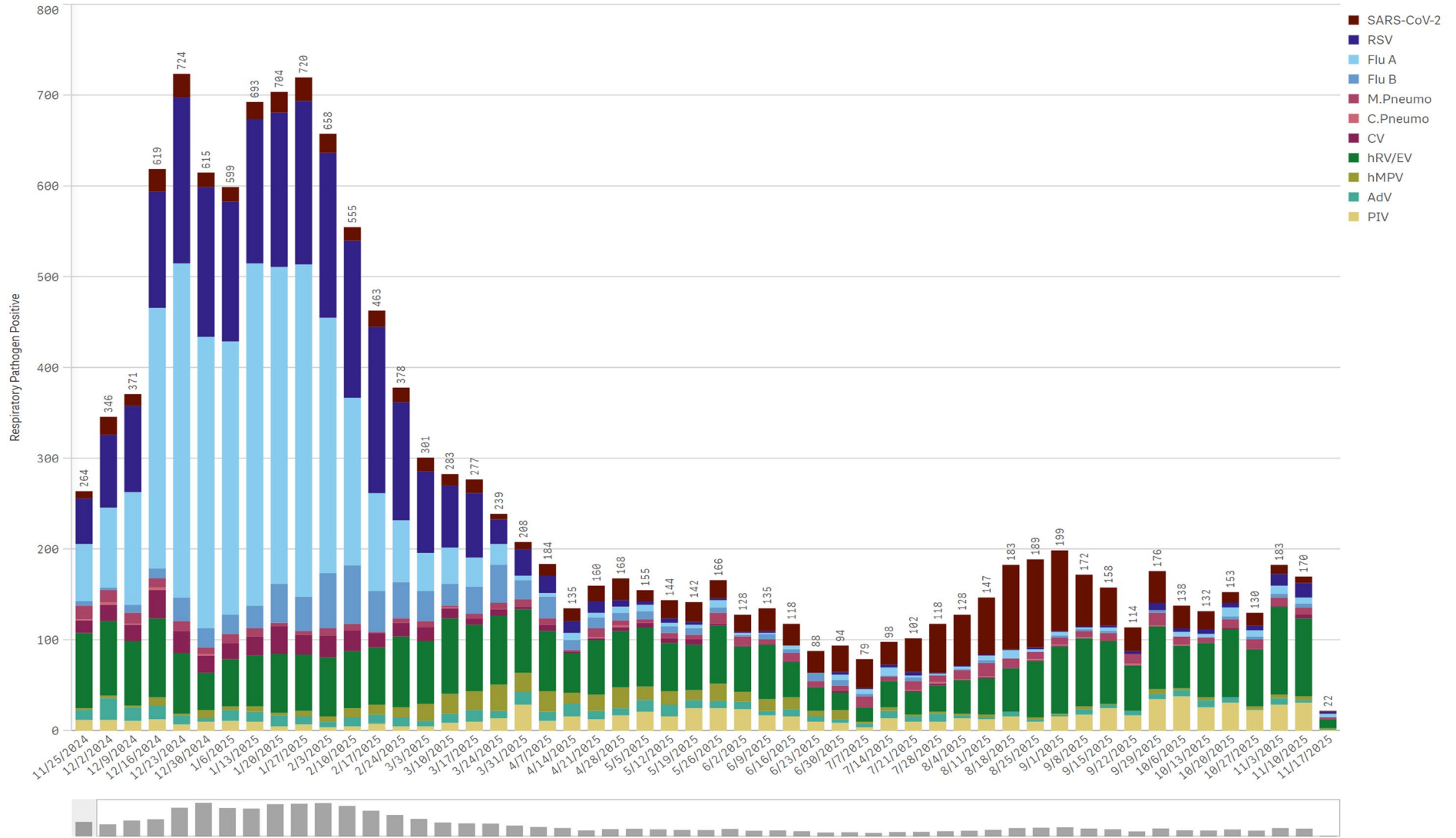
Component Group	Q	Pathogen Positive Previous Week 11/10/2025 - 11/16/2025	Pathogen Tests Previous Week 11/10/2025 -	Previous Week Positive Rate	Pathogen Positive Current WTD* 11/17/2025 -	Pathogen Tests Current WTD* 11/17/2025 - 11/23/2025	Current WTD** Positive Rate	Pathogen Tested YTD**	Pathogen Positive YTD**	Positive Rate YTD**
Totals		159	1,052	15.1%	18	147	12.2%	6,768	866	13%
Human Rhinovirus/Enterovirus		86	200	43.0%	10	29	34.5%	1,240	438	35%
Parainfluenza		31	200	15.5%	1	29	3.4%	1,240	176	14%
RSV		16	392	4.1%	2	65	3.1%	2,579	50	2%
Mycoplasma Pneumoniae		8	200	4.0%	2	29	6.9%	1,240	55	4%
COVID-19(SARS-CoV-2,PCR)		7	414	1.7%	1	59	1.7%	2,815	89	3%
Influenza A		6	392	1.5%	3	65	4.6%	2,579	39	2%
Coronavirus(other than COVID-19)		4	200	2.0%	0	29	0.0%	1,240	6	0%
Human Metapneumovirus		4	200	2.0%	1	29	3.4%	1,240	17	1%
Influenza B		4	392	1.0%	0	65	0.0%	2,579	14	1%
Adenovirus		3	200	1.5%	1	29	3.4%	1,240	33	3%
B.Pertussis/Parapertussis		0	32	0.0%	0	1	0.0%	206	10	5%
Chlamydia Pneumoniae		0	200	0.0%	0	29	0.0%	1,240	1	0%
Enterovirus,CSF		0	0	-	0	0	-	1	0	0%

*Current WTD may not be a completed week, depending on when the data is being reviewed. Refer to data date on page header for reference.

**YTD for this data starts on the first Monday in October.

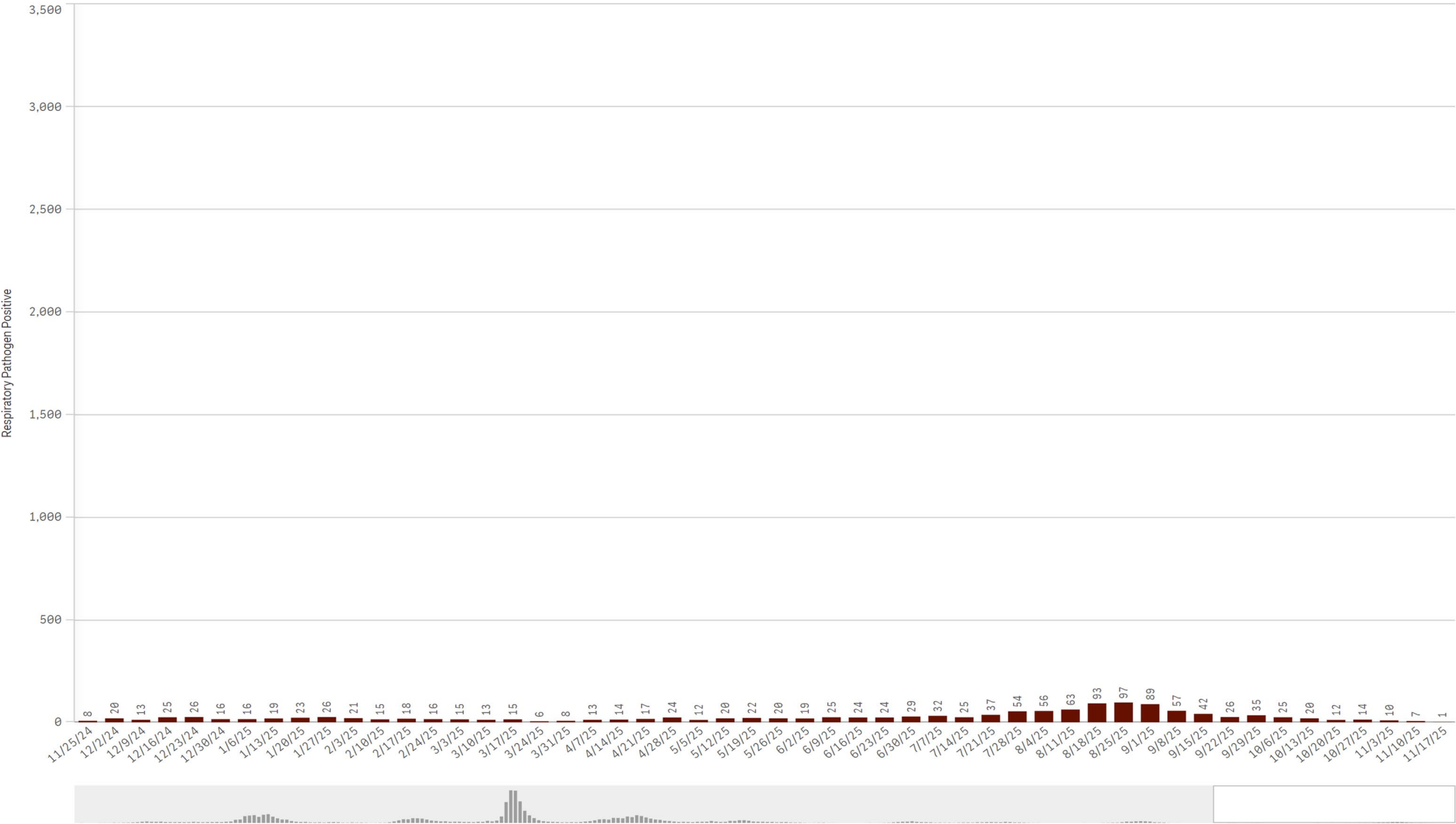
*Current WTD may not be a complete week, depending on when data is being reviewed. Refer to data date on page header for reference.
**YTD for this data starts on the first Monday in October.

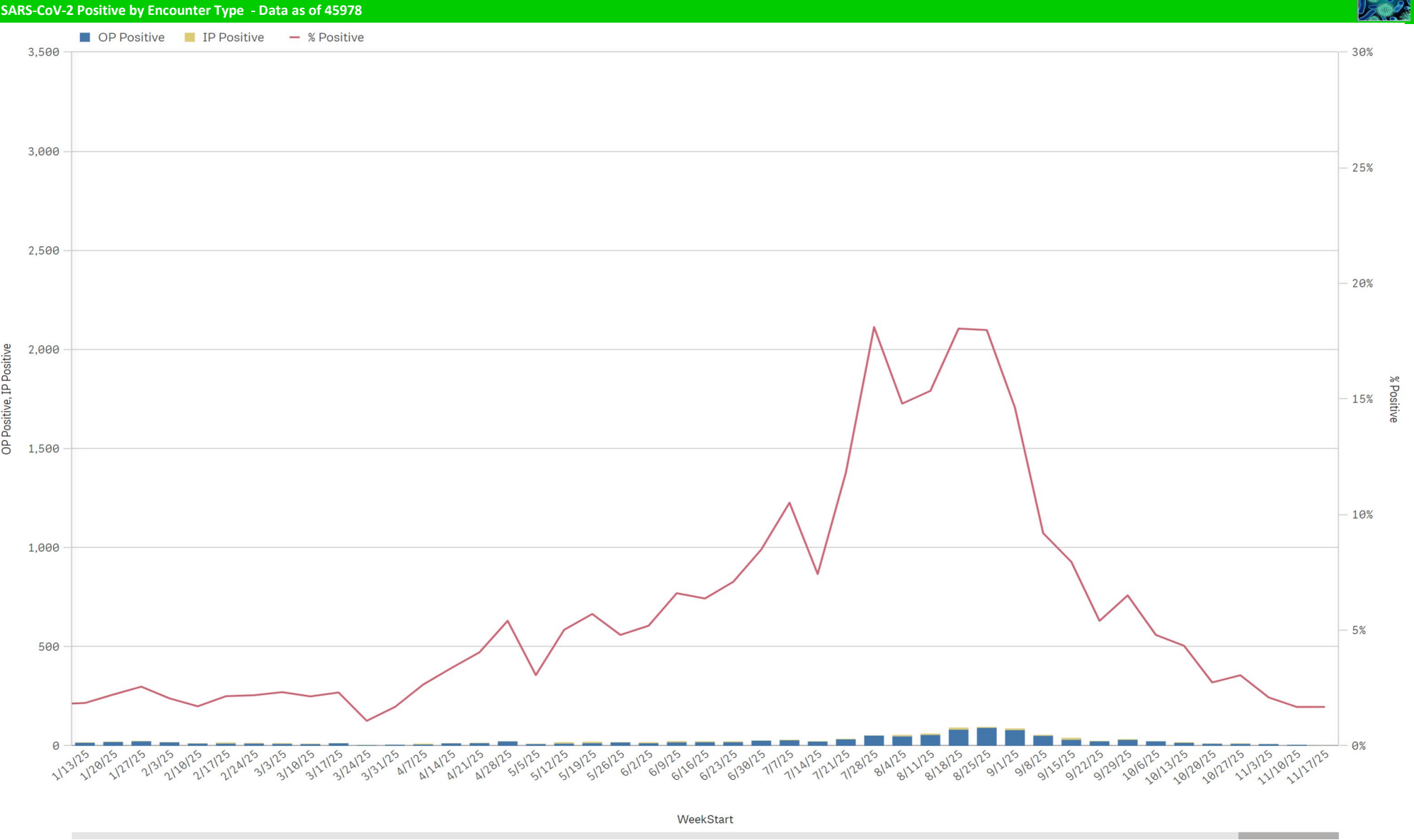
All Positive Respiratory Pathogens by Week Start - Data as of 45978



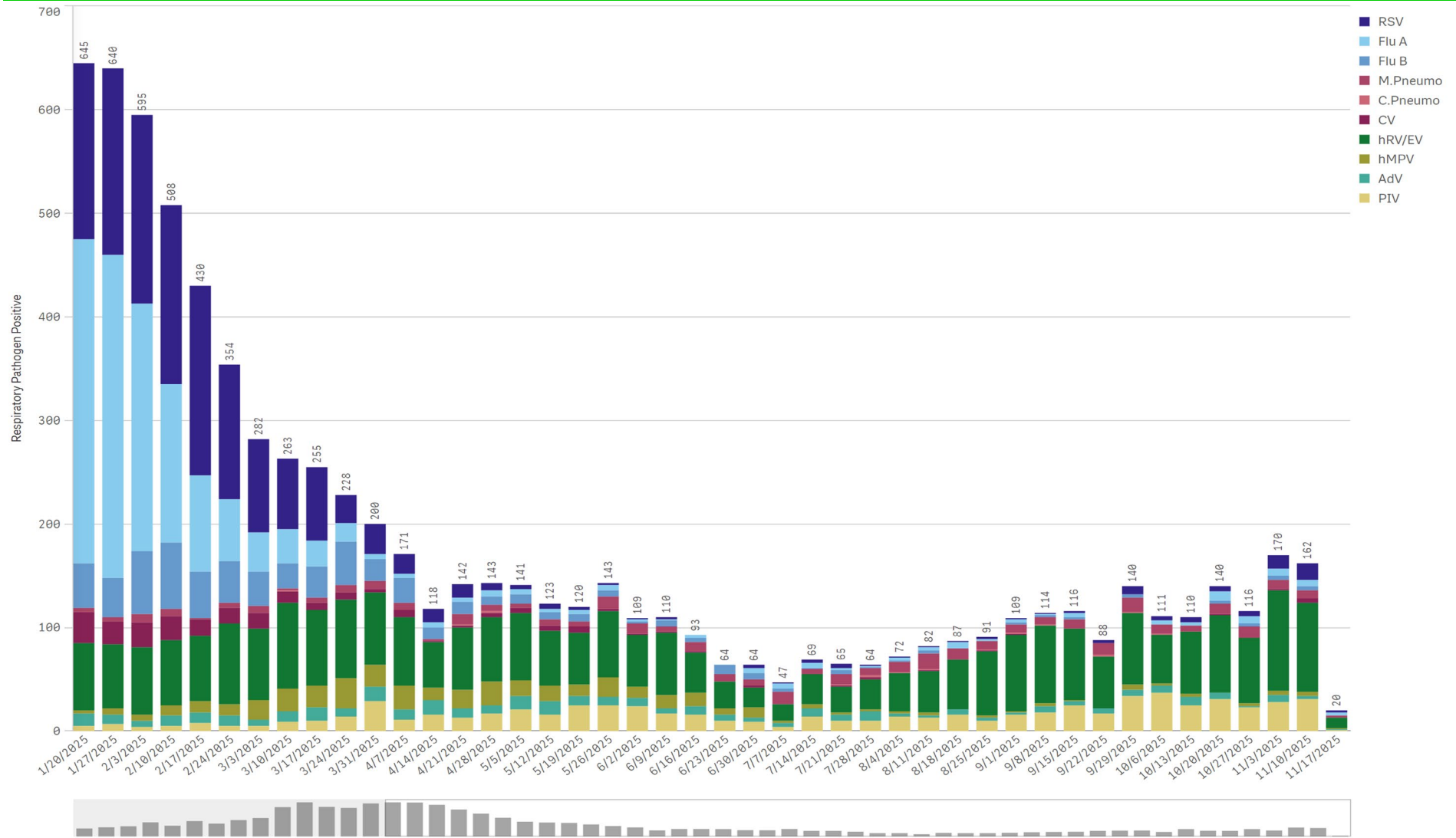
Positive SARS-CoV-2 Pathogens by Week Start - Data as of 45978

SARS-CoV-2 Positive Cases

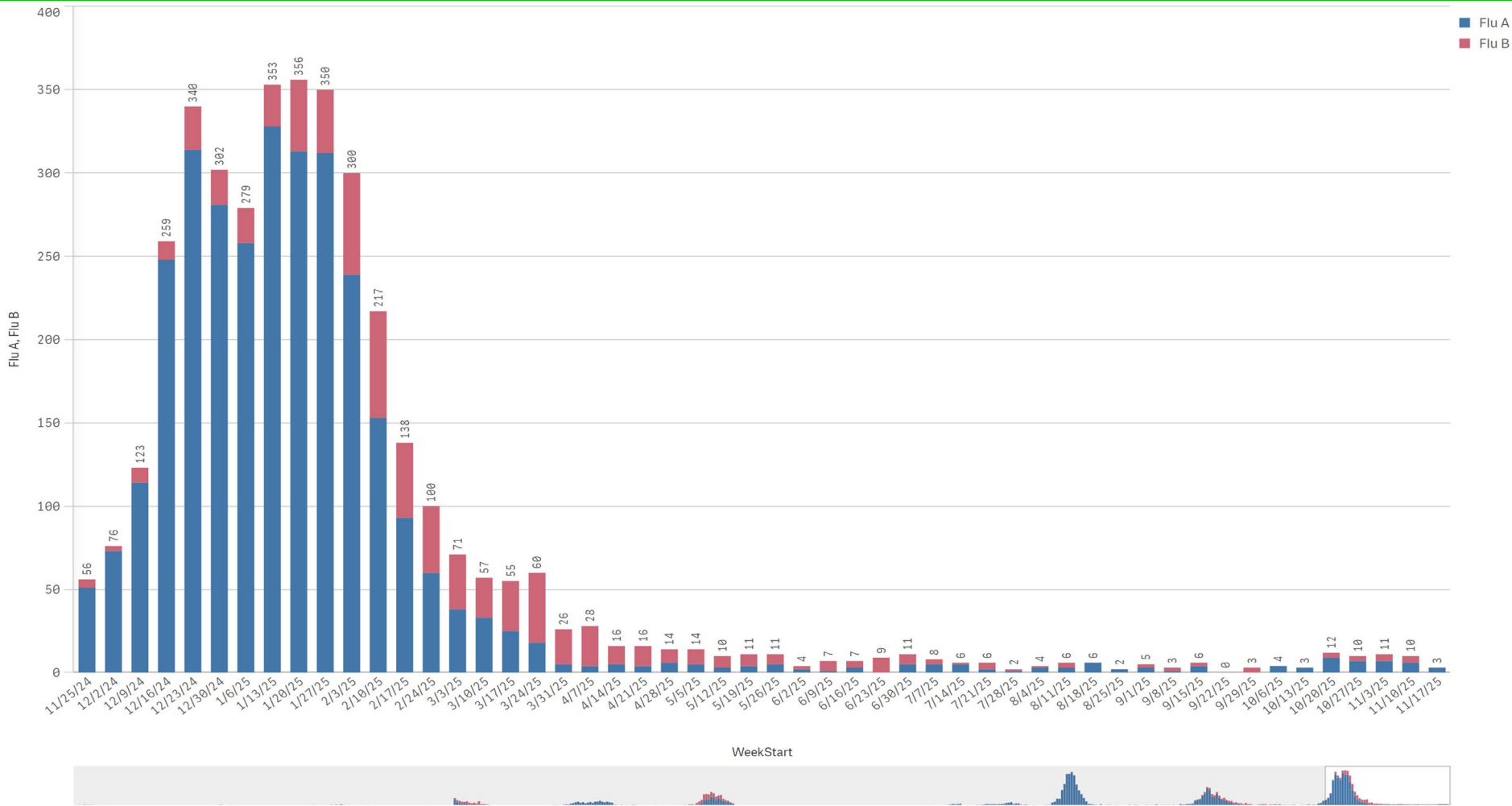




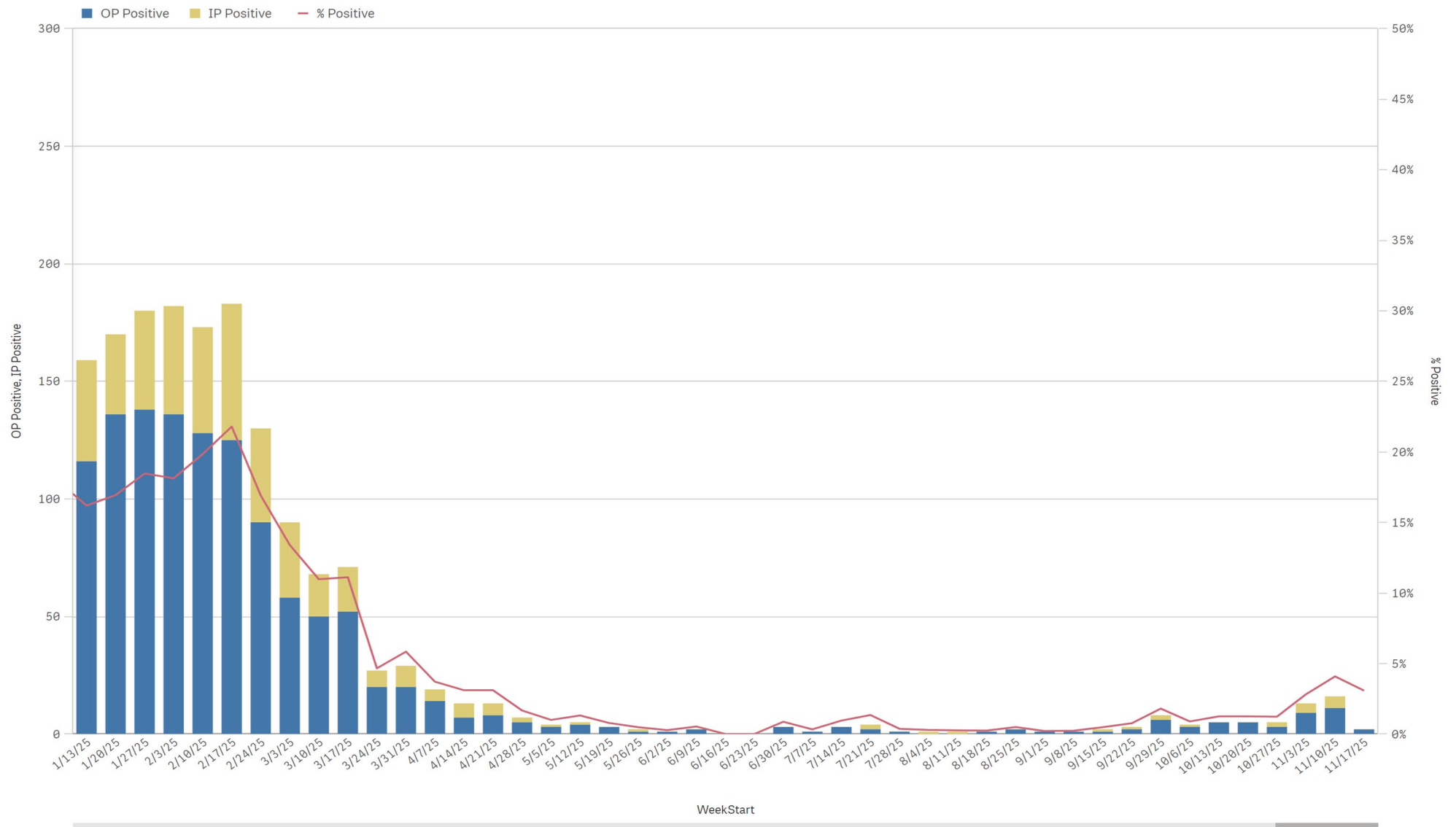
Positive Respiratory Pathogens by Week Start (excl SARS) - Data as of 45978



Influenza A & B Positive by Week Start - Data as of 45978



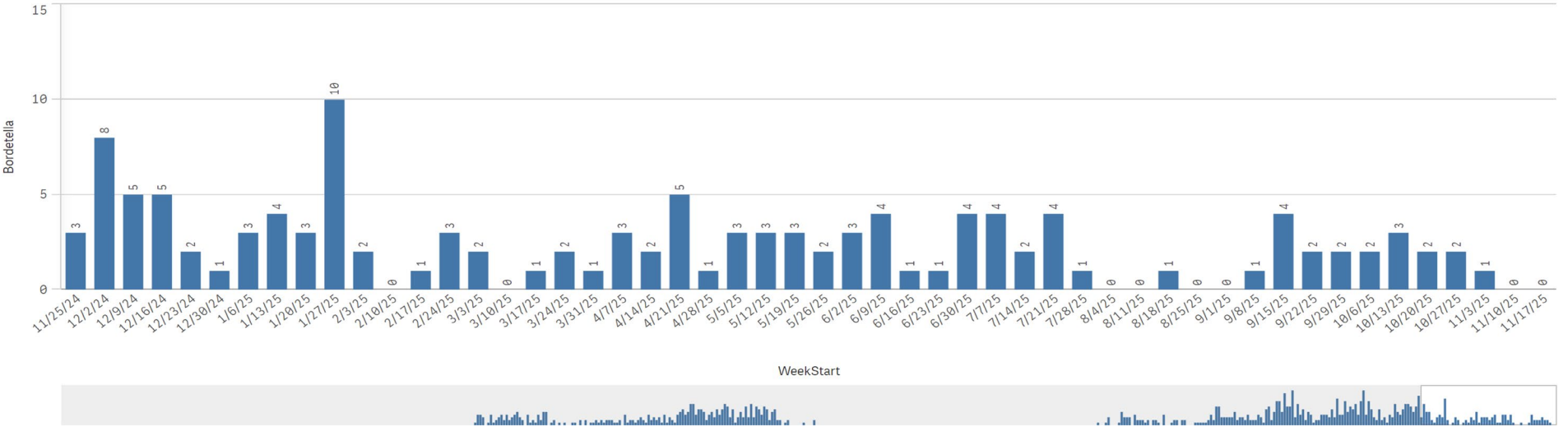
RSV - Data as of 45978



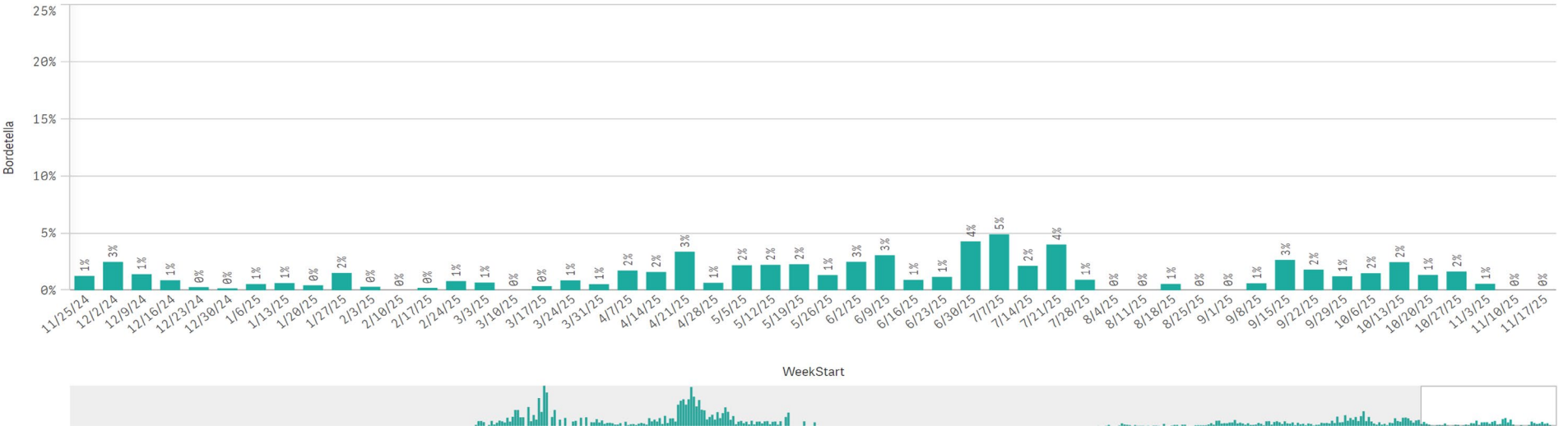
B. Pert/Parap Positives by Week Start - Data as of 45978



B. pertussis/Parapertussis Positives by Week



B. pertussis / B. parapertussis % Positive by Week



Enterovirus by Week Start - Data as of 45978

Enterovirus CSF Positive by Week

