

Volume and Positive Rate

Volume and Positive Rate - Data as of **YTD for this data starts on the first Monday in October.



Component Group	Q	Pathogen Positive Previous Week 6/3/2024 - 6/9/2024	Pathogen Tests Previous Week 6/3/2024 - 6/9/2024	Previous Week Positive Rate	Pathogen Positive Current WTD* 6/10/2024 - 6/16/2024	Pathogen Tests Current WTD* 6/10/2024 - 6/16/2024	Current WTD** Positive Rate	Pathogen Tested YTD**	Pathogen Positive YTD**	Positive Rate YTD**
Totals		144	1,116	12.9%	23	184	12.5%	64,251	10,118	16%
Human Rhinovirus/Enterovirus		67	214	31.3%	5	38	13.2%	9,800	2,808	29%
COVID-19(SARS-CoV-2,PCR)		19	422	4.5%	3	58	5.2%	32,050	1,630	5%
Parainfluenza		18	214	8.4%	9	38	23.7%	9,800	644	7%
Human Metapneumovirus		15	214	7.0%	2	38	5.3%	9,800	557	6%
B.Pertussis/Parapertussis		8	49	16.3%	1	11	9.1%	2,239	198	9%
Influenza A		6	353	1.7%	1	57	1.8%	19,442	1,388	7%
Influenza B		6	353	1.7%	0	57	0.0%	19,442	394	2%
Adenovirus		3	214	1.4%	2	38	5.3%	9,800	468	5%
Coronavirus(other than COVID-19)		2	214	0.9%	0	38	0.0%	9,800	431	4%
Mycoplasma Pneumoniae		2	214	0.9%	1	38	2.6%	9,800	56	1%
RSV		1	353	0.3%	1	57	1.8%	19,440	2,244	12%
Chlamydia Pneumoniae		0	214	0.0%	0	38	0.0%	9,800	1	0%
Enterovirus,CSF		0	0	-	0	0	-	20	5	25%

*Current WTD may not be a completed week, depending on when the data is being reviewed. Refer to data date on page header for reference.

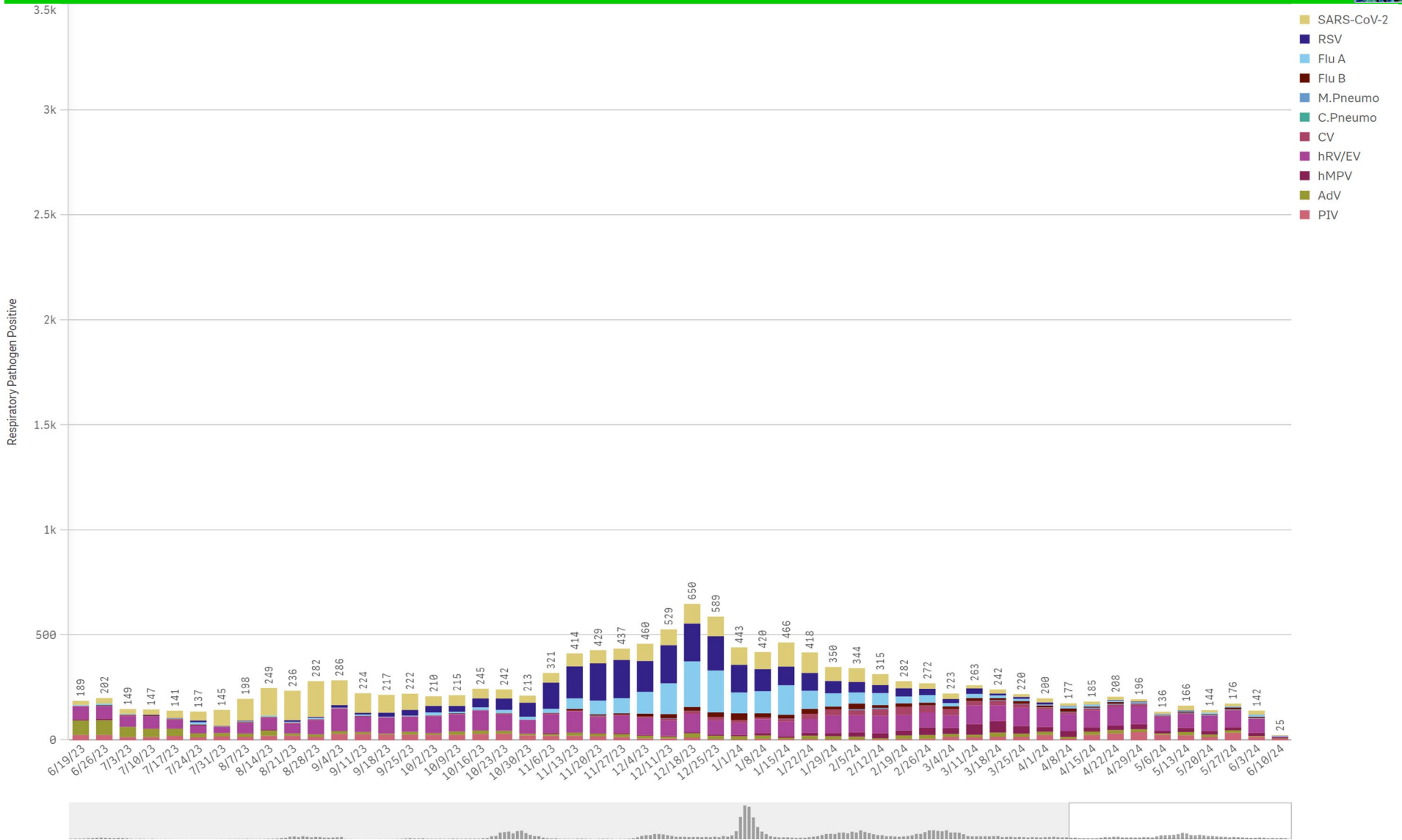
**YTD for this data starts on the first Monday in October.

*Current WTD may not be a complete week, depending on when data is being reviewed. Refer to data date on page header for reference.

**YTD for this data starts on the first Monday in October.

Positive Respiratory Pathogens by Week

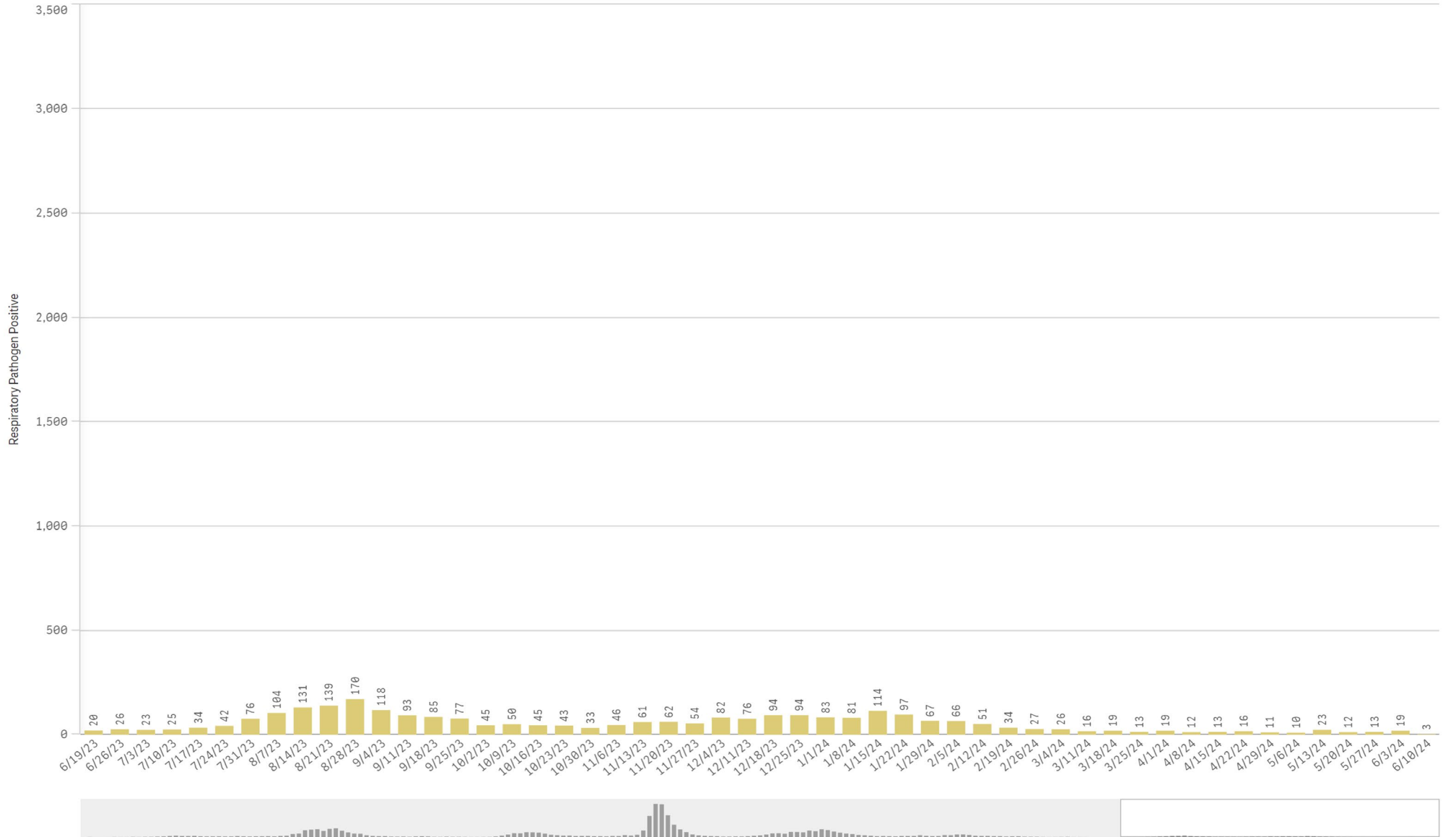
All Positive Respiratory Pathogens by Week Start - Data as of 6/11/2024



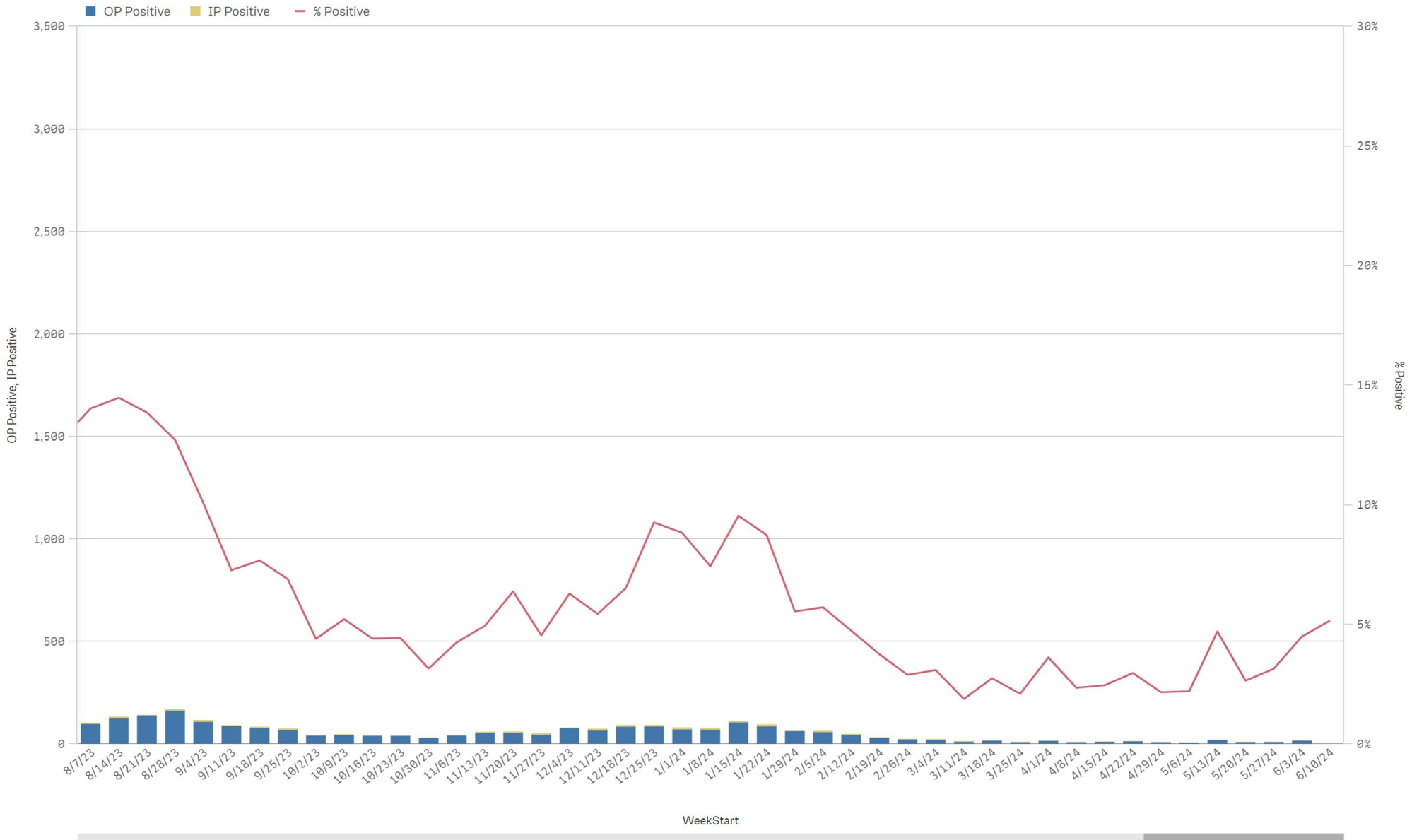
Positive SARS-CoV-2 Pathogens by Week Start - Data as of 6/11/2024



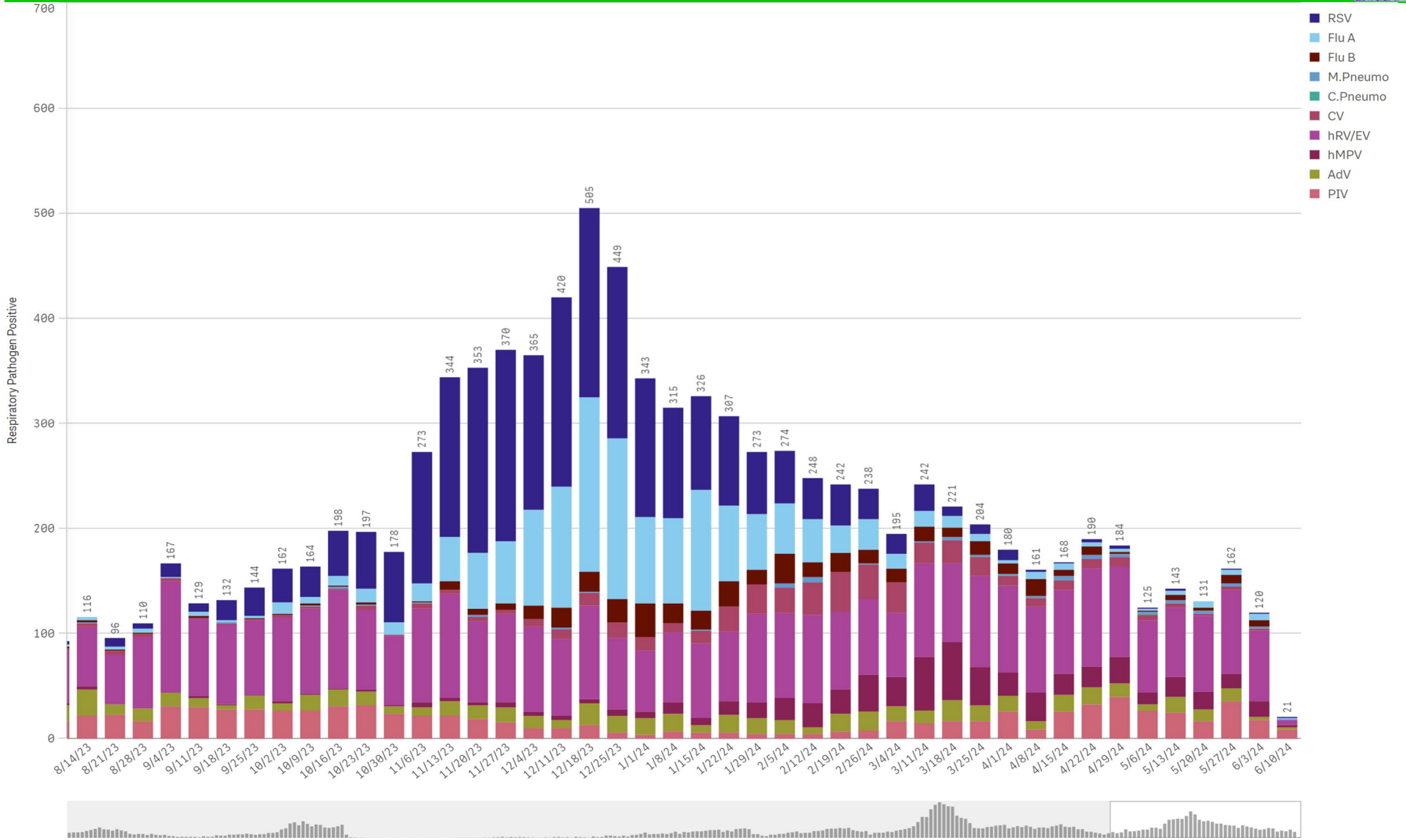
SARS-CoV-2 Positive Cases



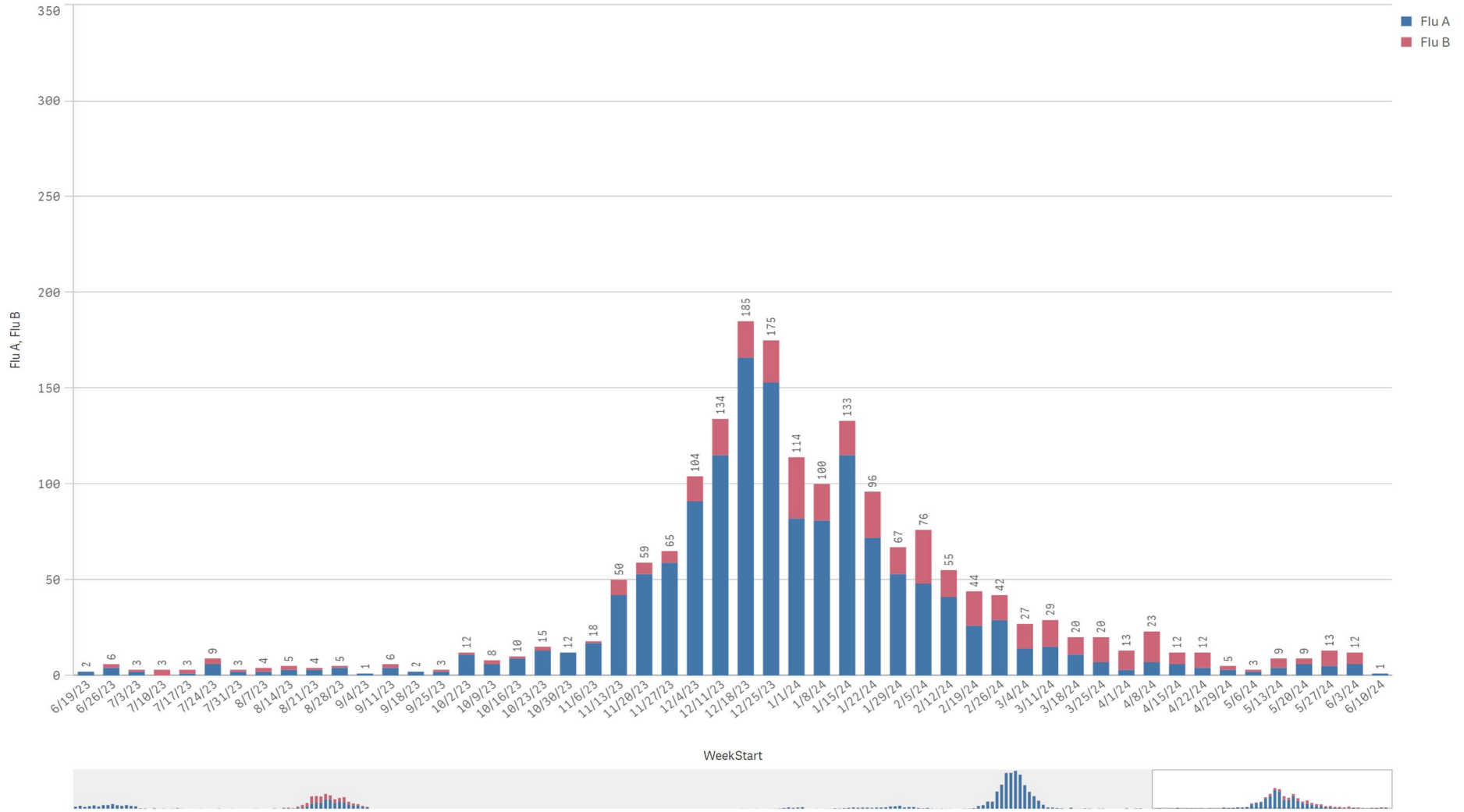
SARS-CoV-2 Positive by Encounter Type - Data as of 6/11/2024



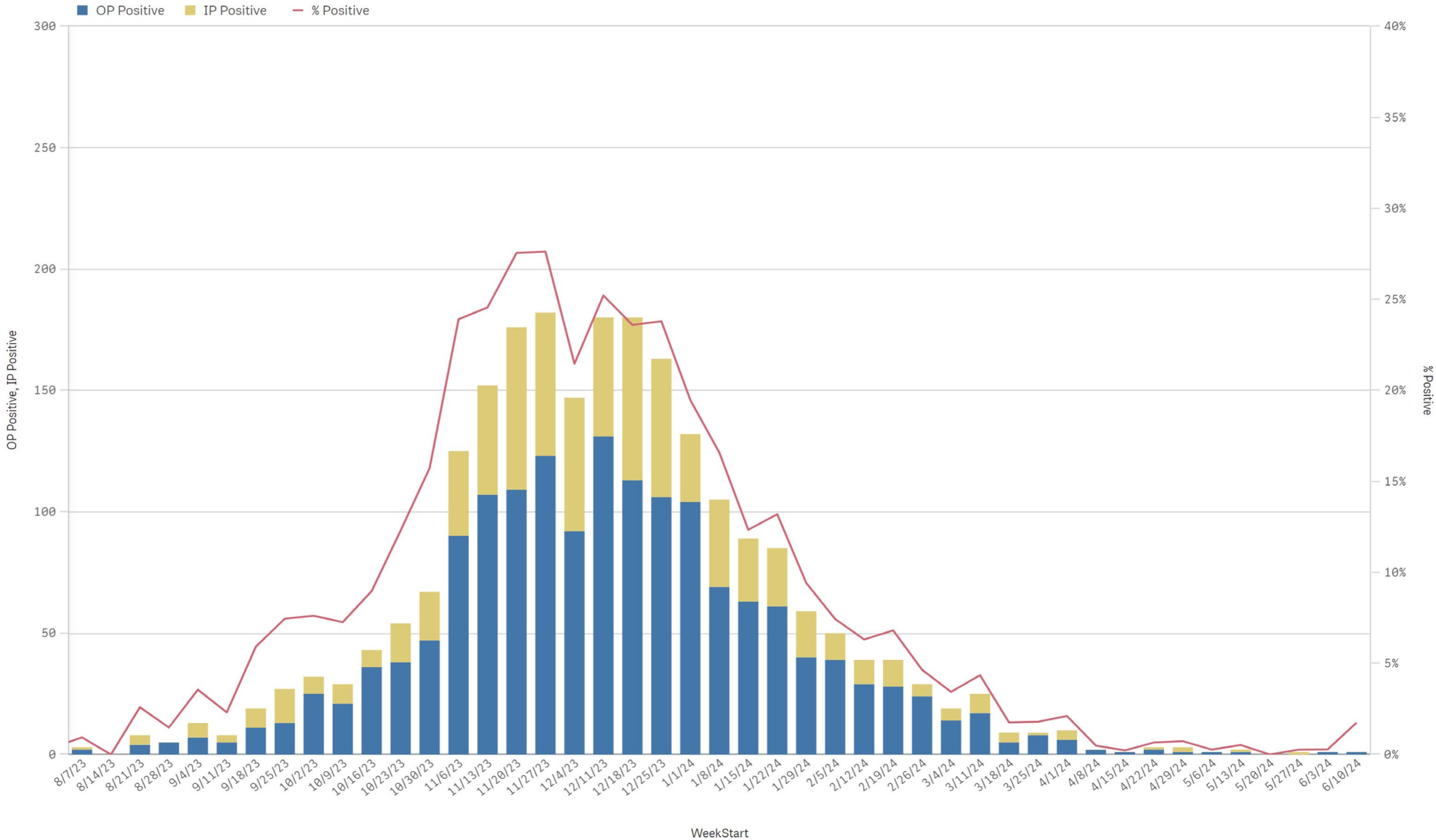
Positive Respiratory Pathogens by Week Start (excl SARS) - Data as of 6/11/2024



Influenza A & B Positive by Week Start - Data as of 6/11/2024



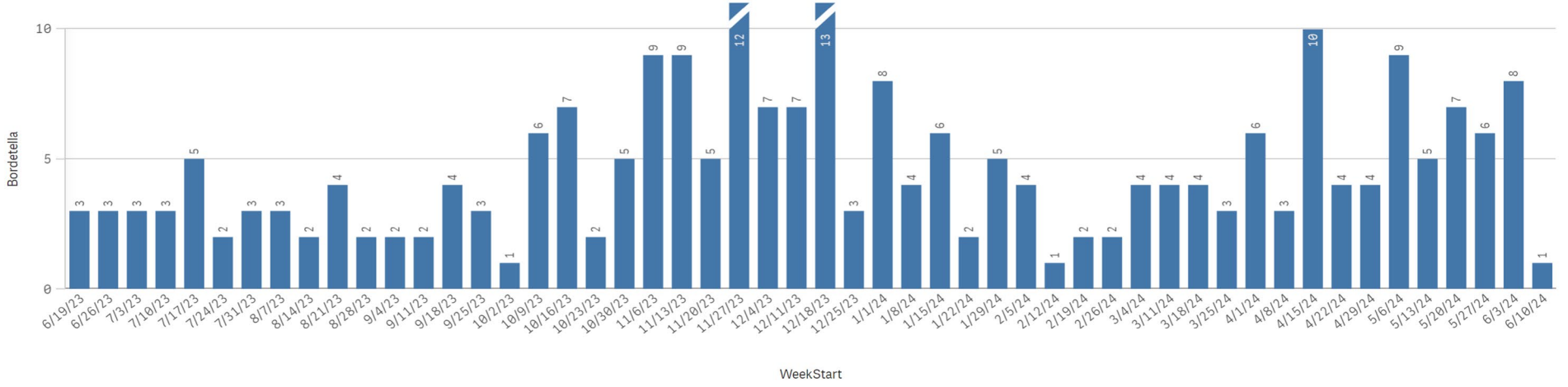
RSV - Data as of 6/11/2024



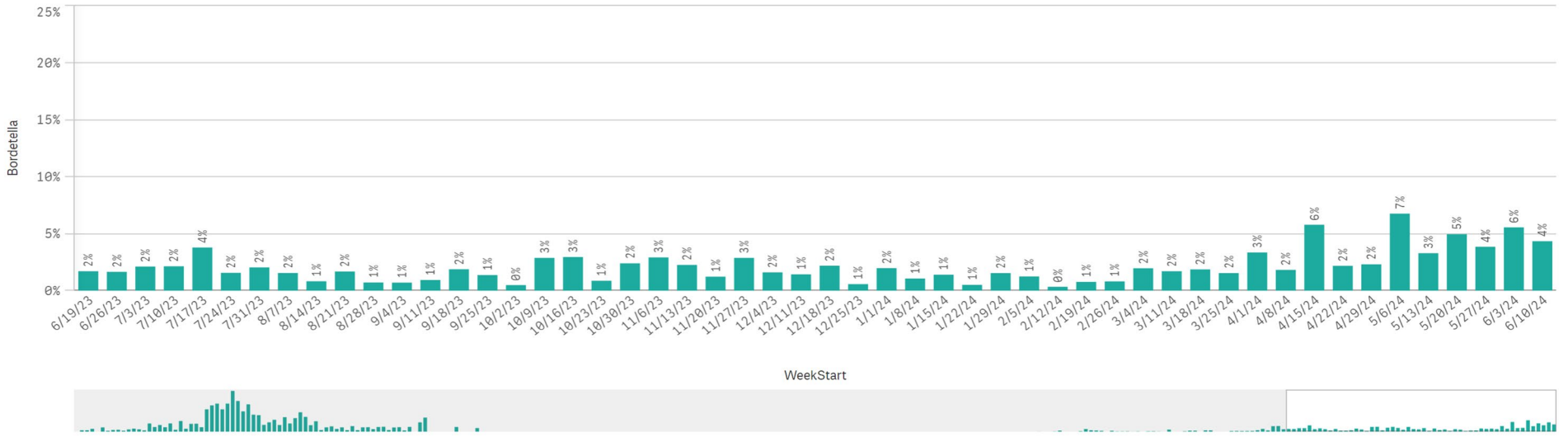
B. Pert/Parap Positives by Week Start - Data as of 6/11/2024



B. Pertussis/Parapertussis Positives by Week

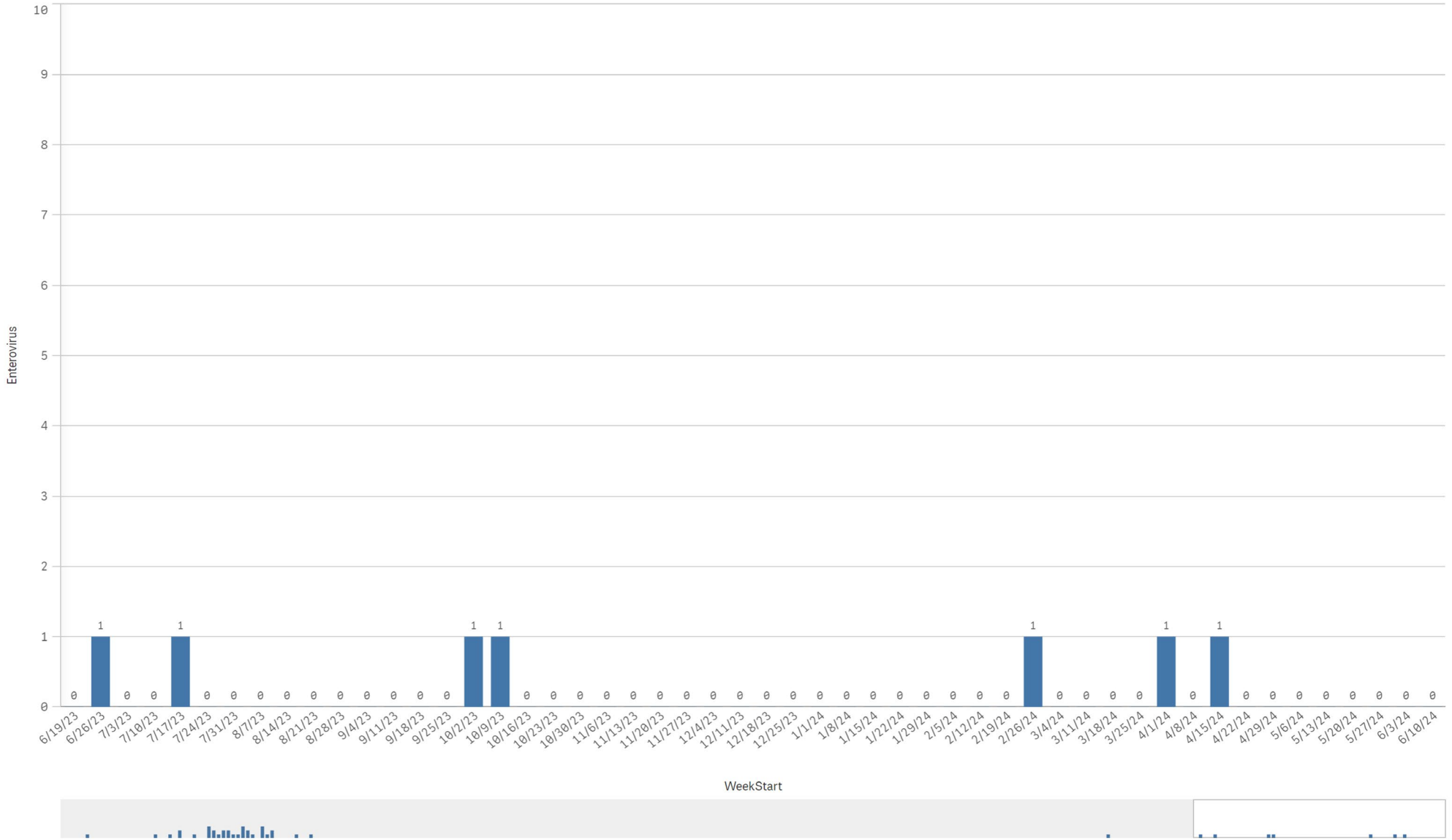


B.pertussis / B.parapertussis % Positive by Week





Enterovirus CSF Positive by Week



Enterovirus