

Volume and Positive Rate

Volume and Positive Rate - Data as of **YTD for this data starts on the first Monday in October.



Component Group	Q	Pathogen Positive Previous Week 9/19/2022 - 9/25/2022	Pathogen Tests Previous Week 9/19/2022 - 9/25/2022	Previous Week Positive Rate	Pathogen Positive Current WTD* 9/26/2022 - 10/2/2022	Pathogen Tests Current WTD* 9/26/2022 - 10/2/2022	Current WTD** Positive Rate	Pathogen Tested YTD**	Pathogen Positive YTD**	Positive Rate YTD**
Totals		307	3,883	7.9%	45	489	9.2%	295,770	30,009	10%
COVID-19(SARS-CoV-2,PCR)		120	3,102	3.9%	7	343	2.0%	261,263	23,972	9%
Human Rhinovirus/Enterovirus		93	231	40.3%	20	45	44.4%	10,031	3,048	30%
RSV		58	279	20.8%	16	55	29.1%	12,773	1,147	9%
Parainfluenza		19	231	8.2%	1	45	2.2%	10,031	727	7%
Adenovirus		10	231	4.3%	1	45	2.2%	10,031	566	6%
Influenza A		6	281	2.1%	1	55	1.8%	14,518	364	3%
B.Pertussis/Parapertussis		5	37	13.5%	0	1	0.0%	913	11	1%
Human Metapneumovirus		5	231	2.2%	1	45	2.2%	10,031	486	5%
Chlamydia Pneumoniae		0	231	0.0%	0	45	0.0%	10,031	1	0%
Coronavirus(other than COVID-19)		0	231	0.0%	0	45	0.0%	10,031	377	4%
Enterovirus,CSF		0	1	0.0%	0	0	-	37	0	0%
Influenza B		0	281	0.0%	0	55	0.0%	14,518	2	0%
Mycoplasma Pneumoniae		0	231	0.0%	0	45	0.0%	10,031	1	0%

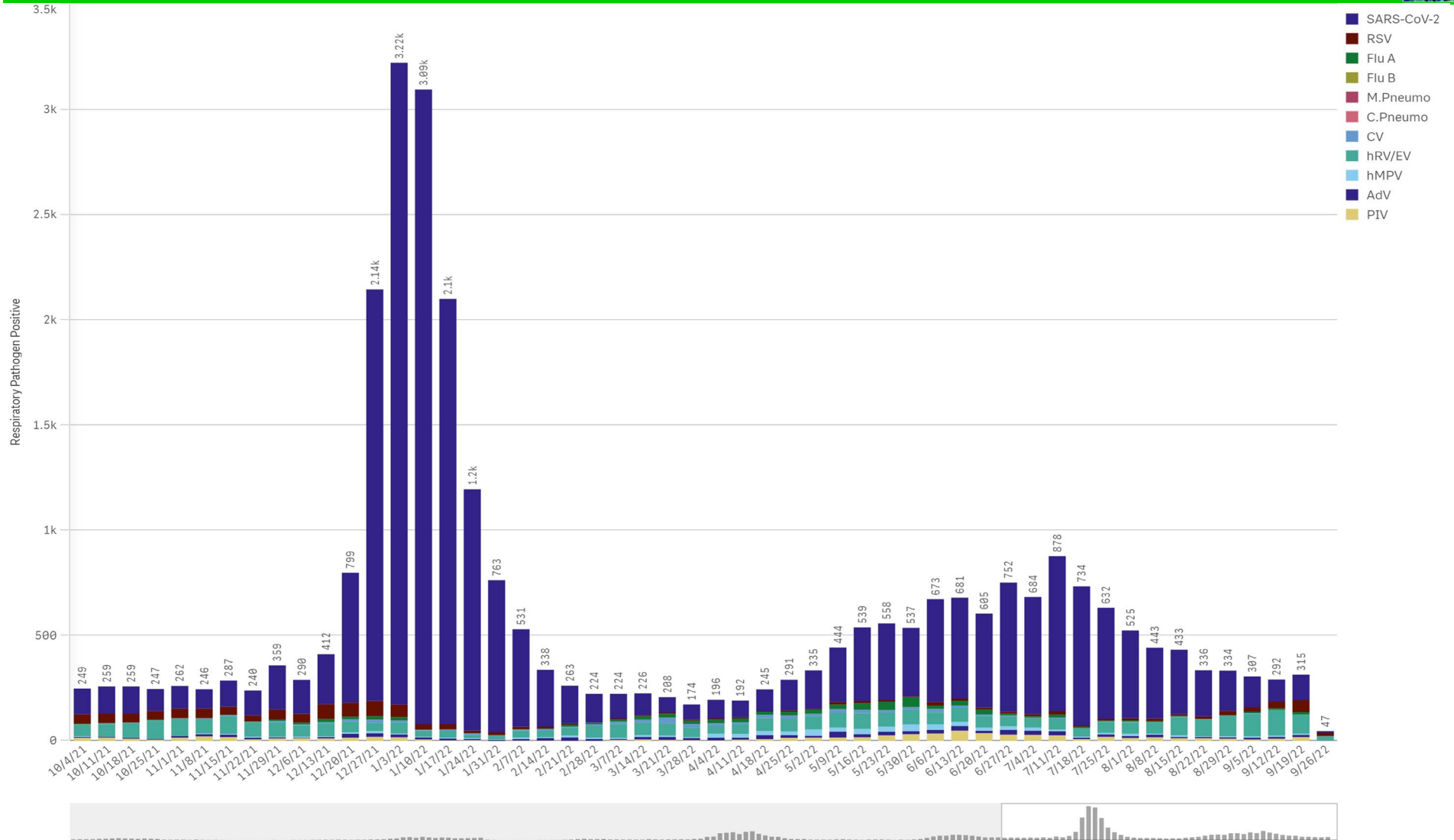
*Current WTD may not be a completed week, depending on when the data is being reviewed. Refer to data date on page header for reference.

**YTD for this data starts on the first Monday in October.

*Current WTD may not be a complete week, depending on when data is being reviewed. Refer to data date on page header for reference.

**YTD for this data starts on the first Monday in October.

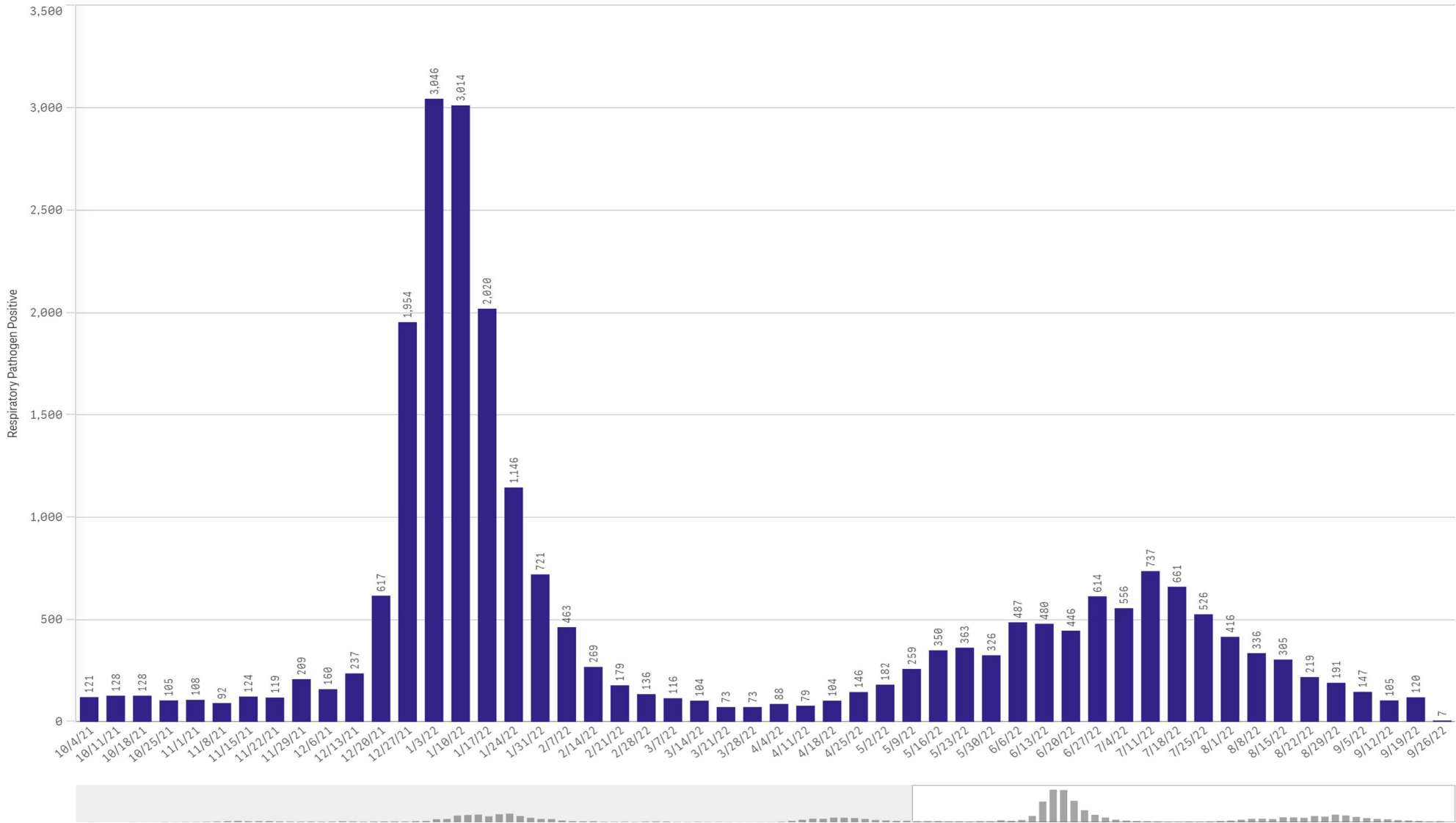
All Positive Respiratory Pathogens by Week Start - Data as of 9/26/2022



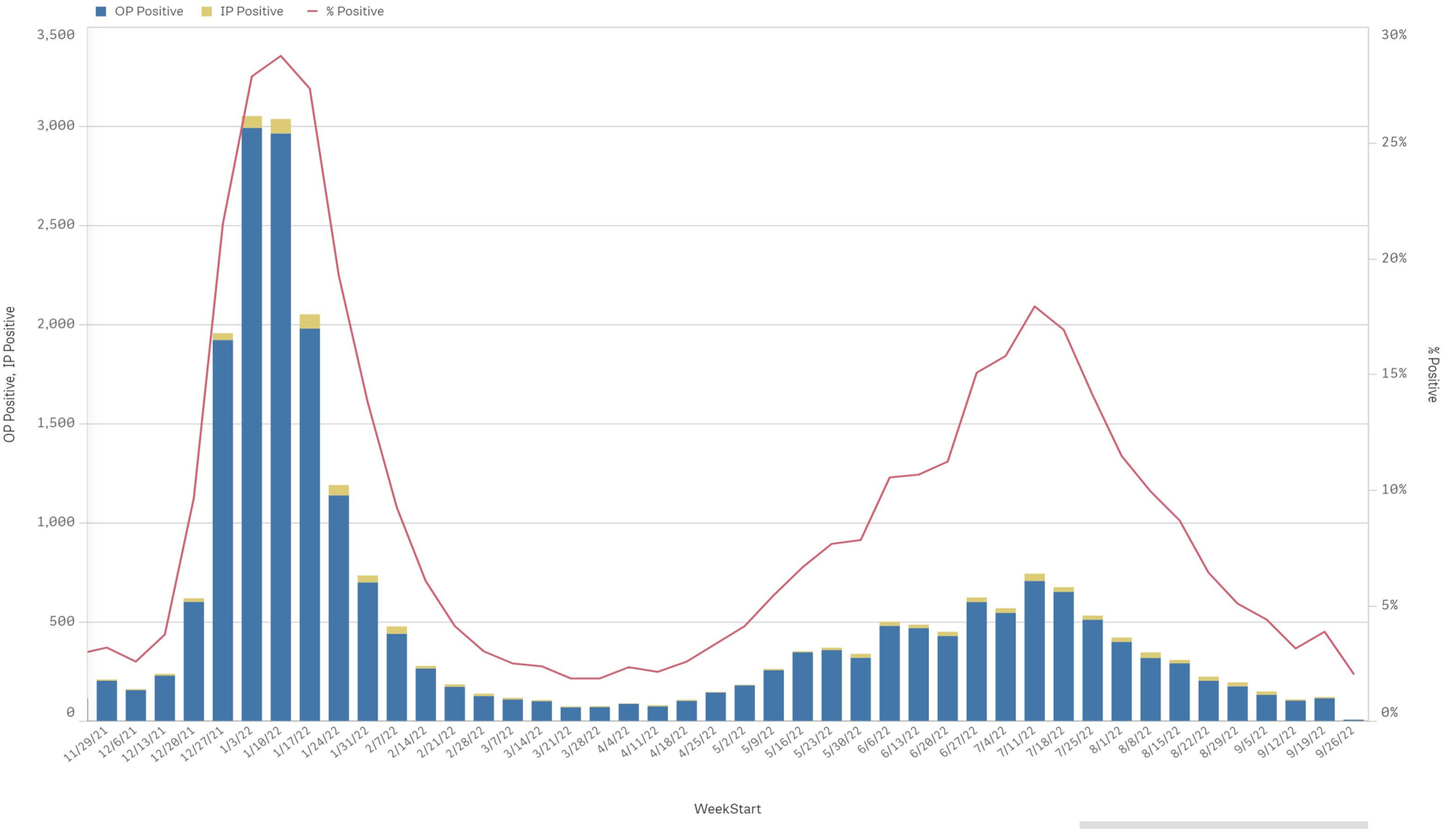
Positive SARS-CoV-2 Pathogens by Week Start - Data as of 9/26/2022



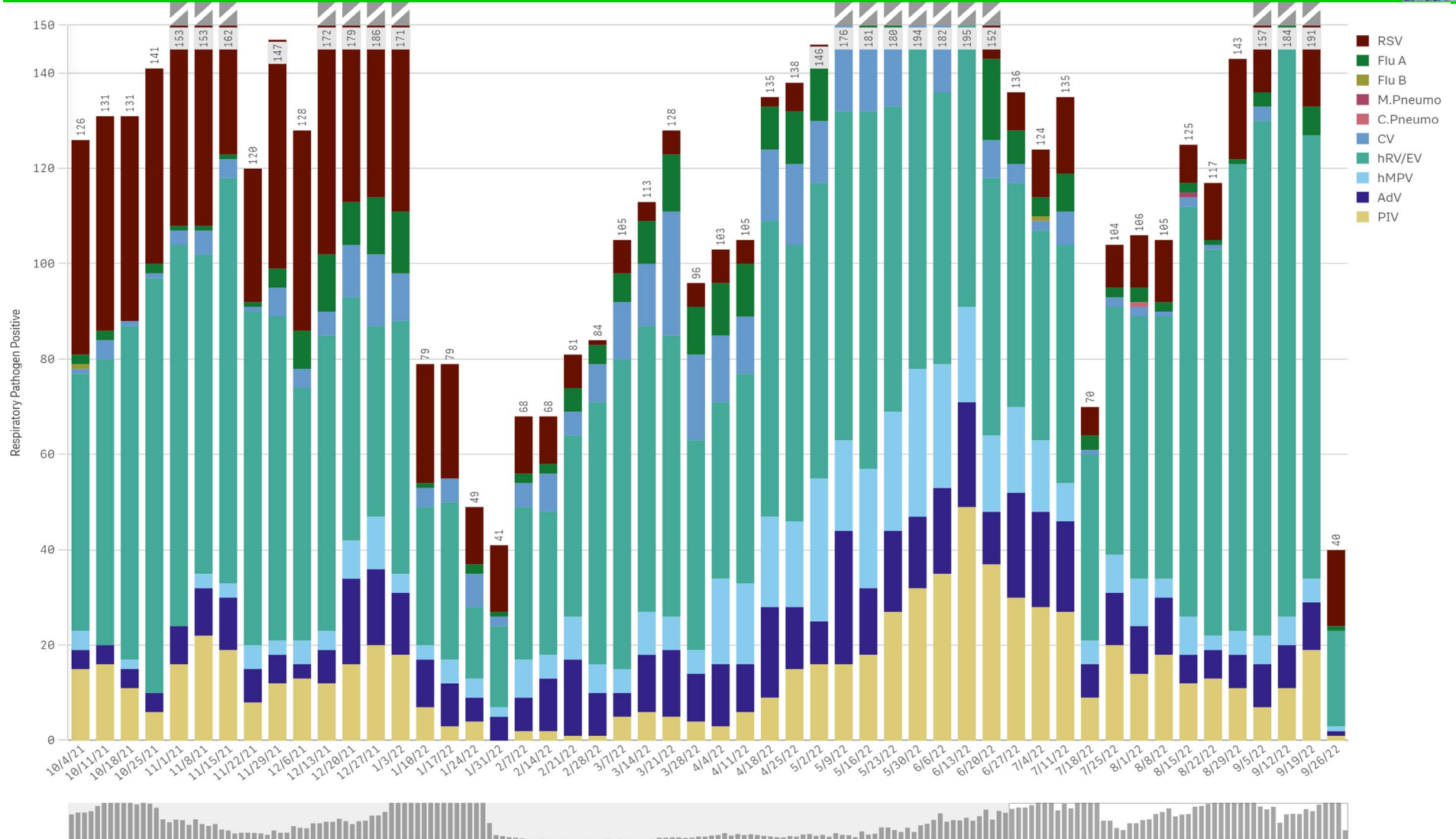
SARS-CoV-2 Positive Cases



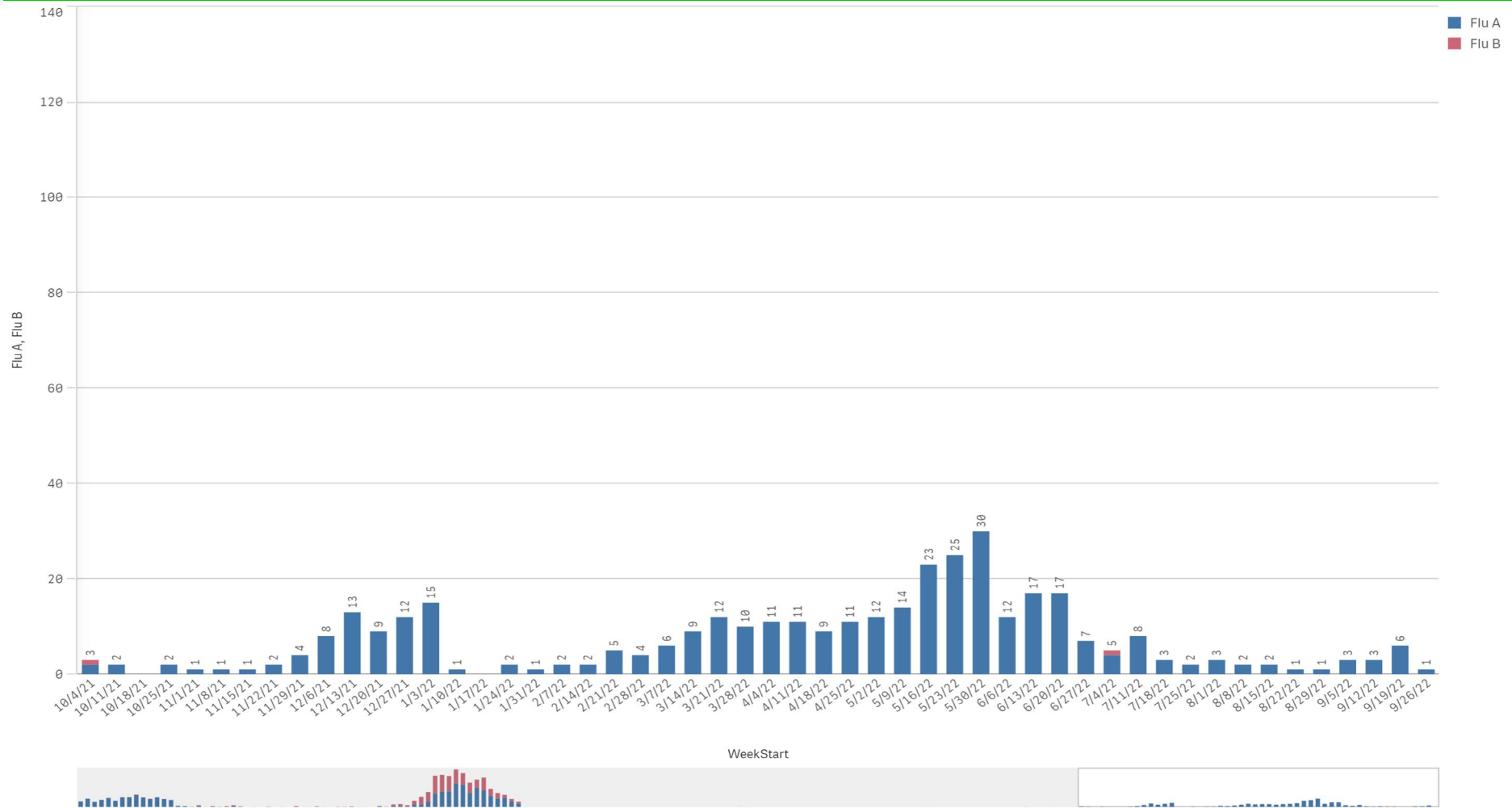
SARS-CoV-2 Positive by Encounter Type - Data as of 9/26/2022



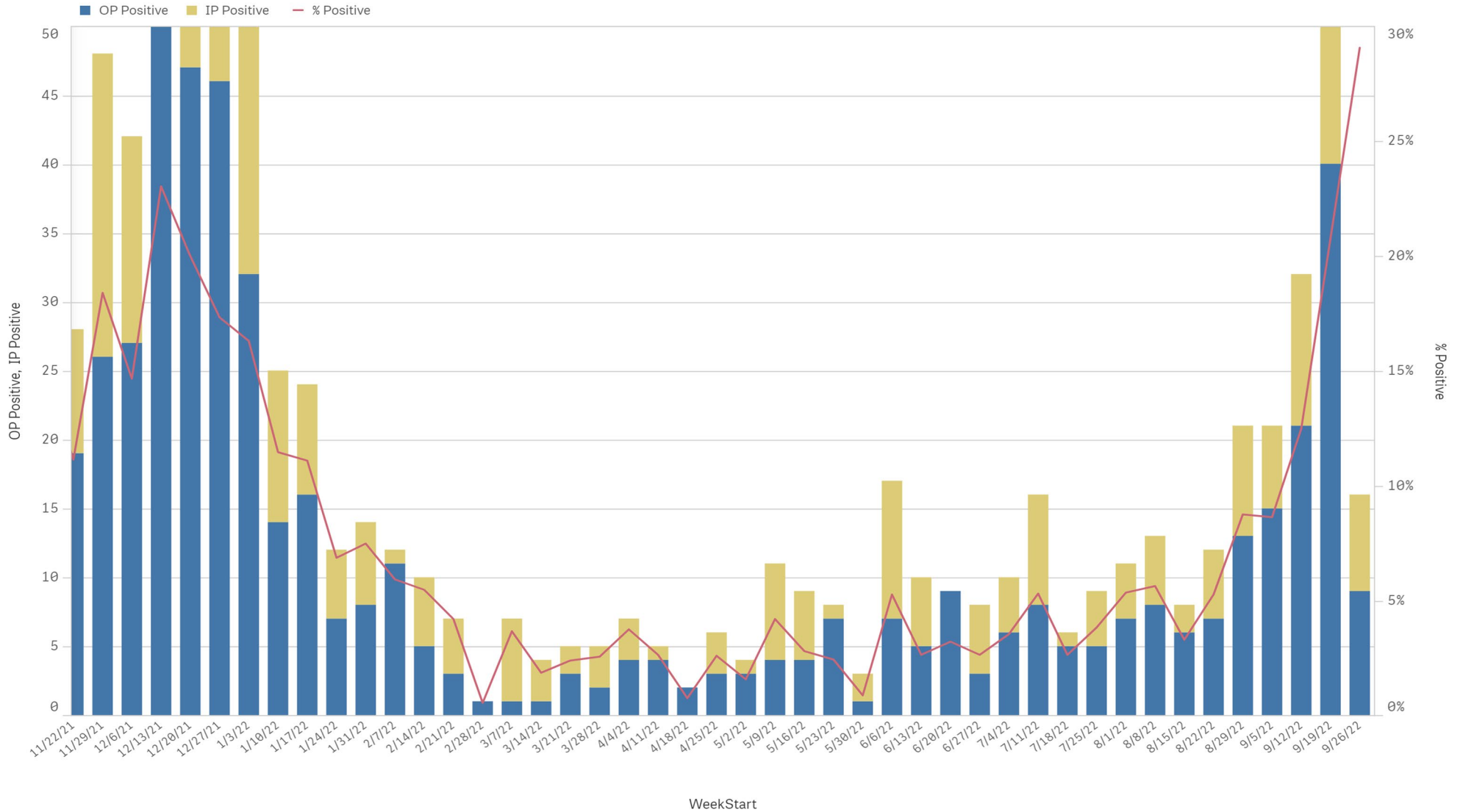
Positive Respiratory Pathogens by Week Start (excl SARS) - Data as of 9/26/2022



Influenza A & B Positive by Week Start - Data as of 9/26/2022



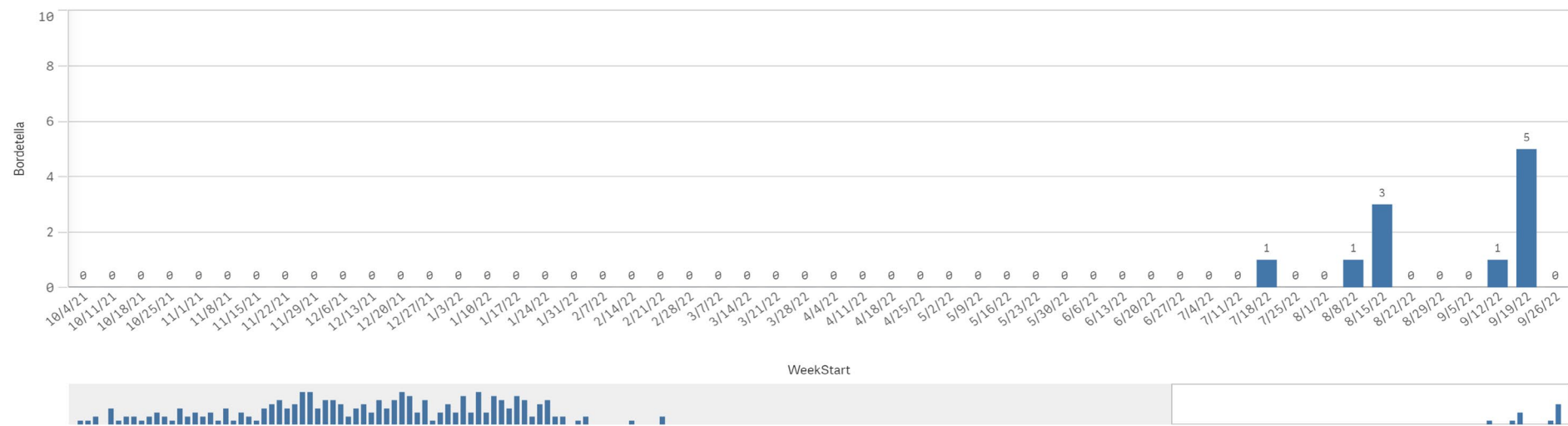
RSV - Data as of 9/26/2022



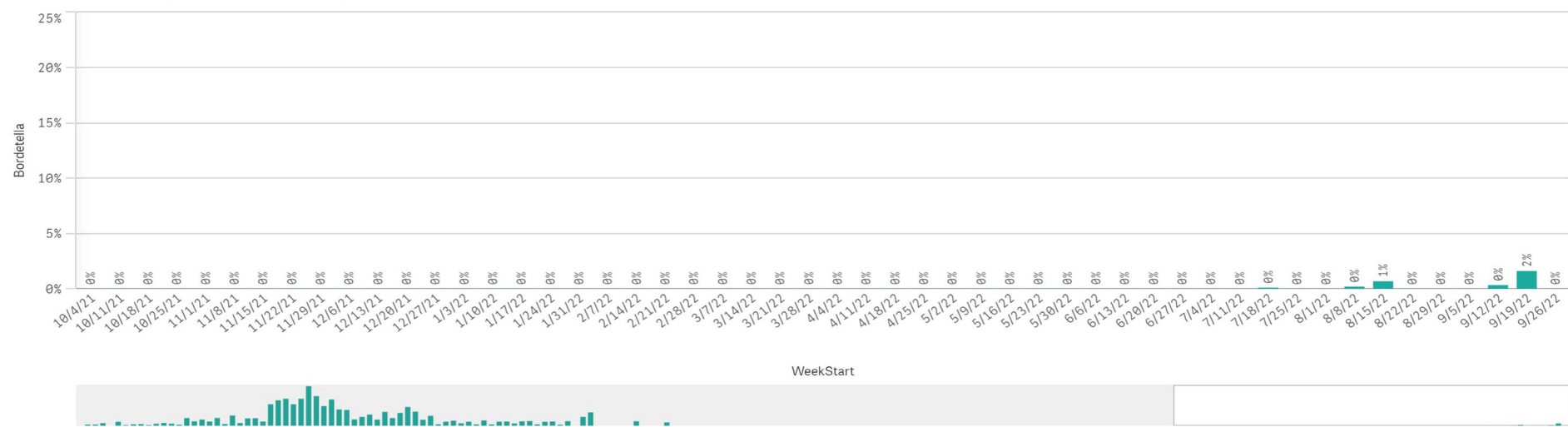
B. Pert/Parap Positives by Week Start - Data as of 9/26/2022



B. Pertussis/Parapertussis Positives by Week



B.pertussis / B.parapertussis % Positive by Week



Enterovirus by Week Start - Data as of 9/26/2022

Enterovirus CSF Positive by Week

