

Volume and Positive Rate

Volume and Positive Rate - Data as of **YTD for this data starts on the first Monday in October.



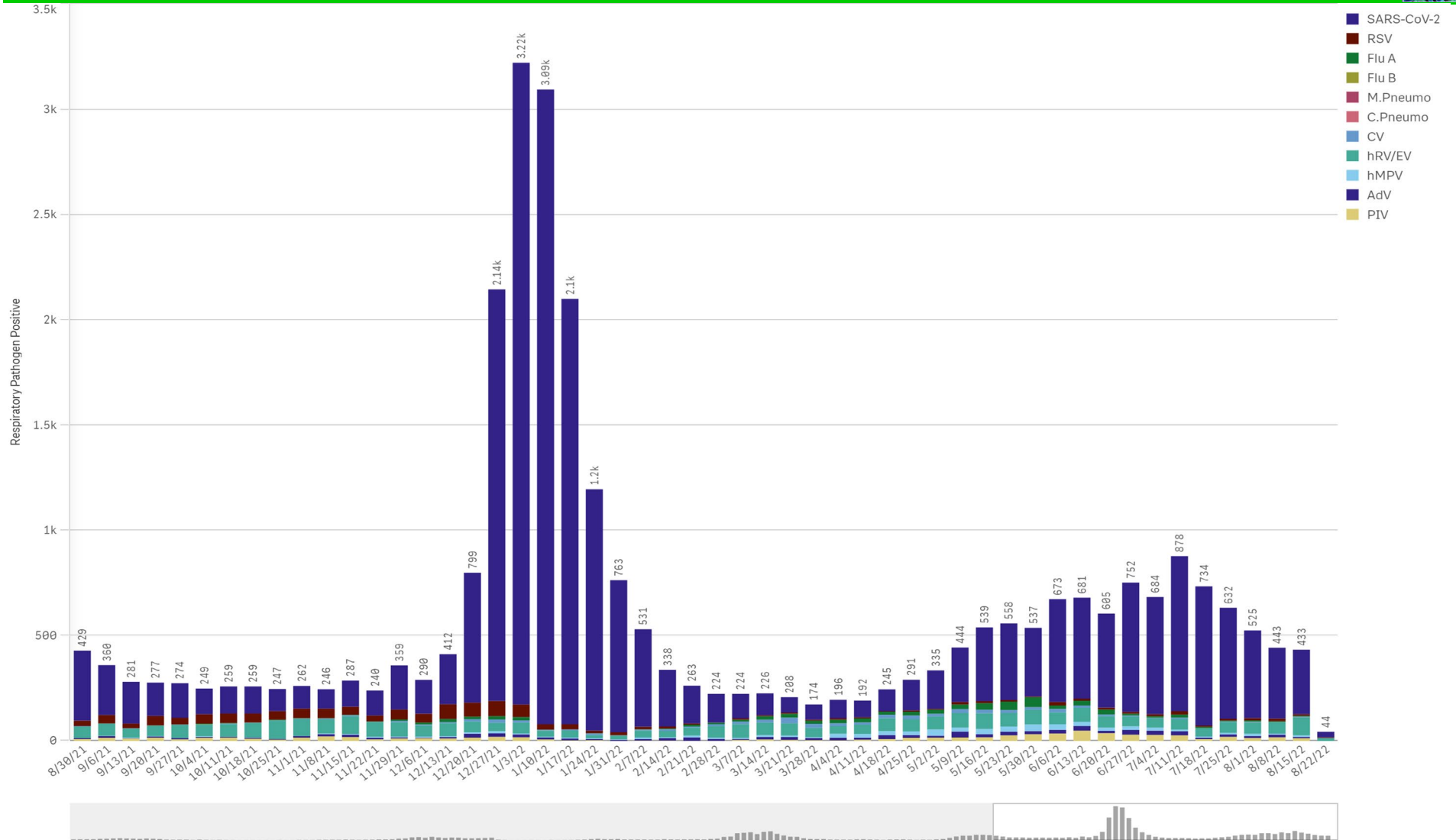
Component Group	Q	Pathogen Positive Previous Week 8/15/2022 - 8/21/2022	Pathogen Tests Previous Week 8/15/2022 - 8/21/2022	Previous Week Positive Rate	Pathogen Positive Current WTD* 8/22/2022 - 8/28/2022	Pathogen Tests Current WTD* 8/22/2022 - 8/28/2022	Current WTD** Positive Rate	Pathogen Tested YTD**	Pathogen Positive YTD**	Positive Rate YTD**
Totals		424	4,212	10.1%	44	415	10.6%	274,889	28,464	10%
COVID-19(SARS-CoV-2,PCR)		307	3,539	8.7%	26	327	8.0%	244,019	23,198	10%
Human Rhinovirus/Enterovirus		86	210	41.0%	13	28	46.4%	8,901	2,538	29%
Parainfluenza		12	210	5.7%	0	28	0.0%	8,901	665	7%
Human Metapneumovirus		8	210	3.8%	0	28	0.0%	8,901	460	5%
RSV		8	243	3.3%	4	30	13.3%	11,502	991	9%
Adenovirus		6	210	2.9%	0	28	0.0%	8,901	524	6%
B.Pertussis/Parapertussis		3	10	30.0%	0	1	0.0%	814	5	1%
Coronavirus(other than COVID-19)		2	210	1.0%	1	28	3.6%	8,901	374	4%
Influenza A		2	247	0.8%	0	30	0.0%	13,238	349	3%
Mycoplasma Pneumoniae		1	210	0.5%	0	28	0.0%	8,901	1	0%
Chlamydia Pneumoniae		0	210	0.0%	0	28	0.0%	8,901	1	0%
Enterovirus,CSF		0	0	-	0	1	0.0%	32	0	0%
Influenza B		0	247	0.0%	0	30	0.0%	13,238	2	0%

*Current WTD may not be a completed week, depending on when the data is being reviewed. Refer to data date on page header for reference.

**YTD for this data starts on the first Monday in October.

*Current WTD may not be a complete week, depending on when data is being reviewed. Refer to data date on page header for reference.
**YTD for this data starts on the first Monday in October.

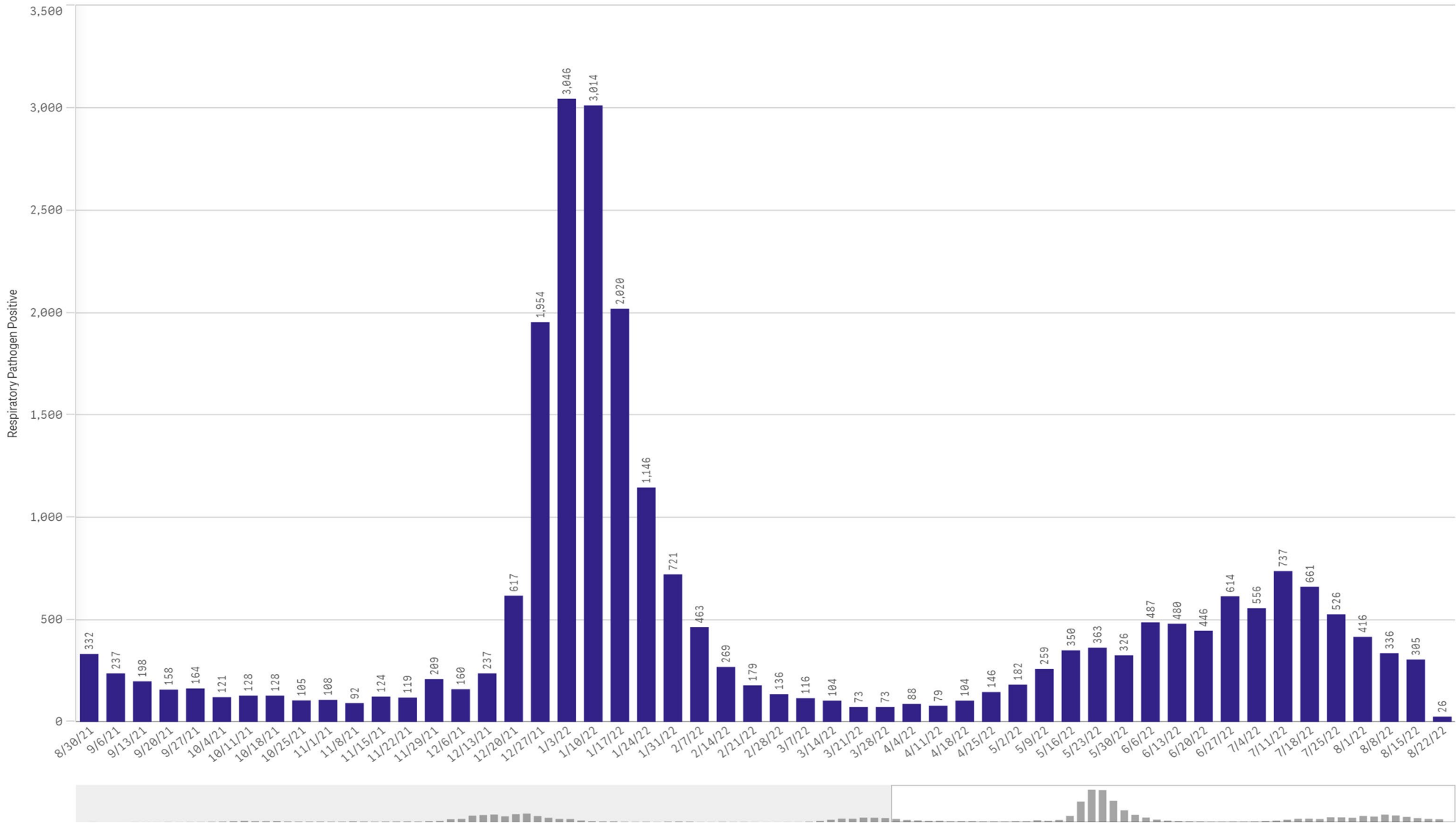
All Positive Respiratory Pathogens by Week Start - Data as of 8/22/2022



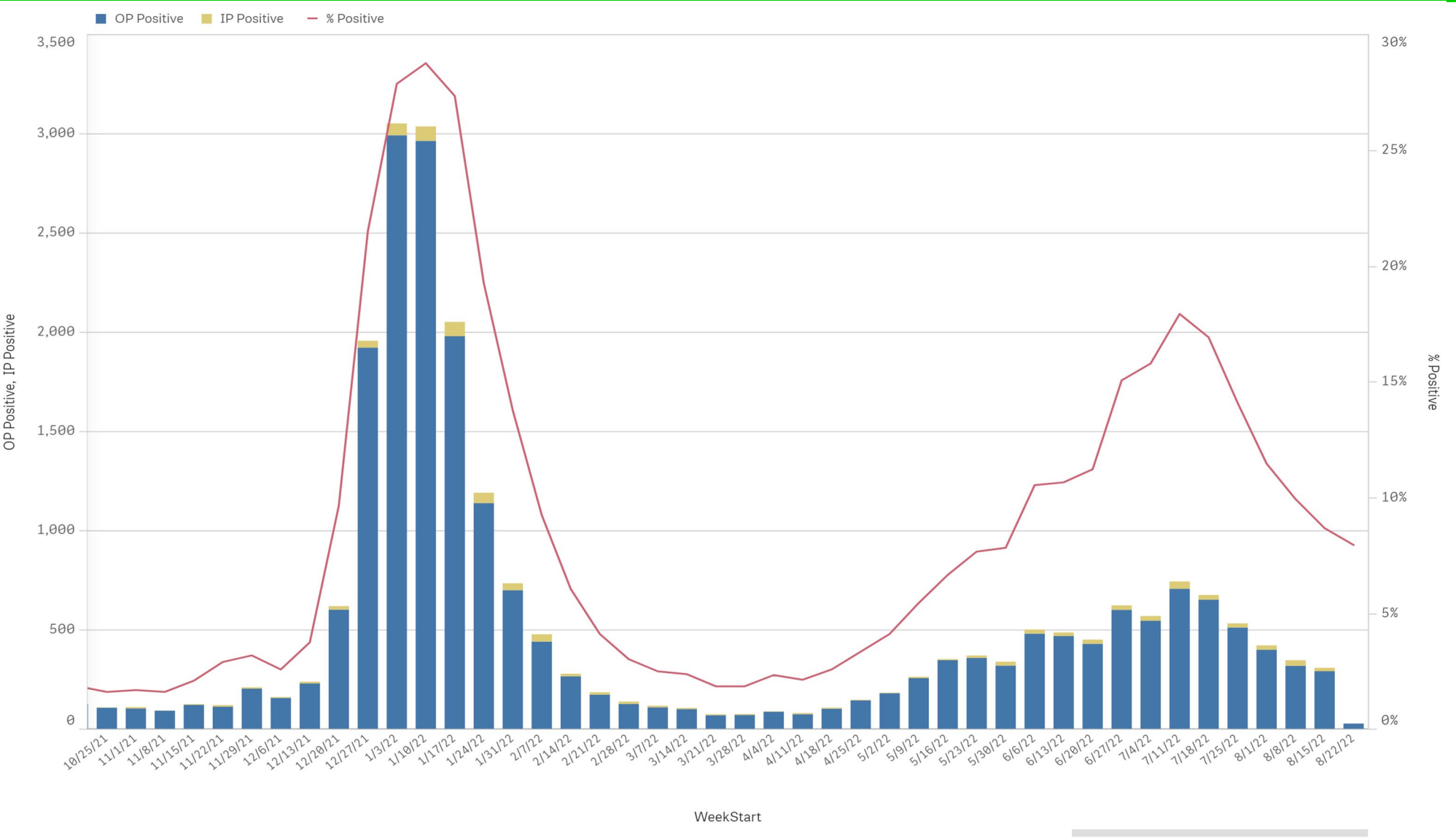
Positive SARS-CoV-2 Pathogens by Week Start - Data as of 8/22/2022



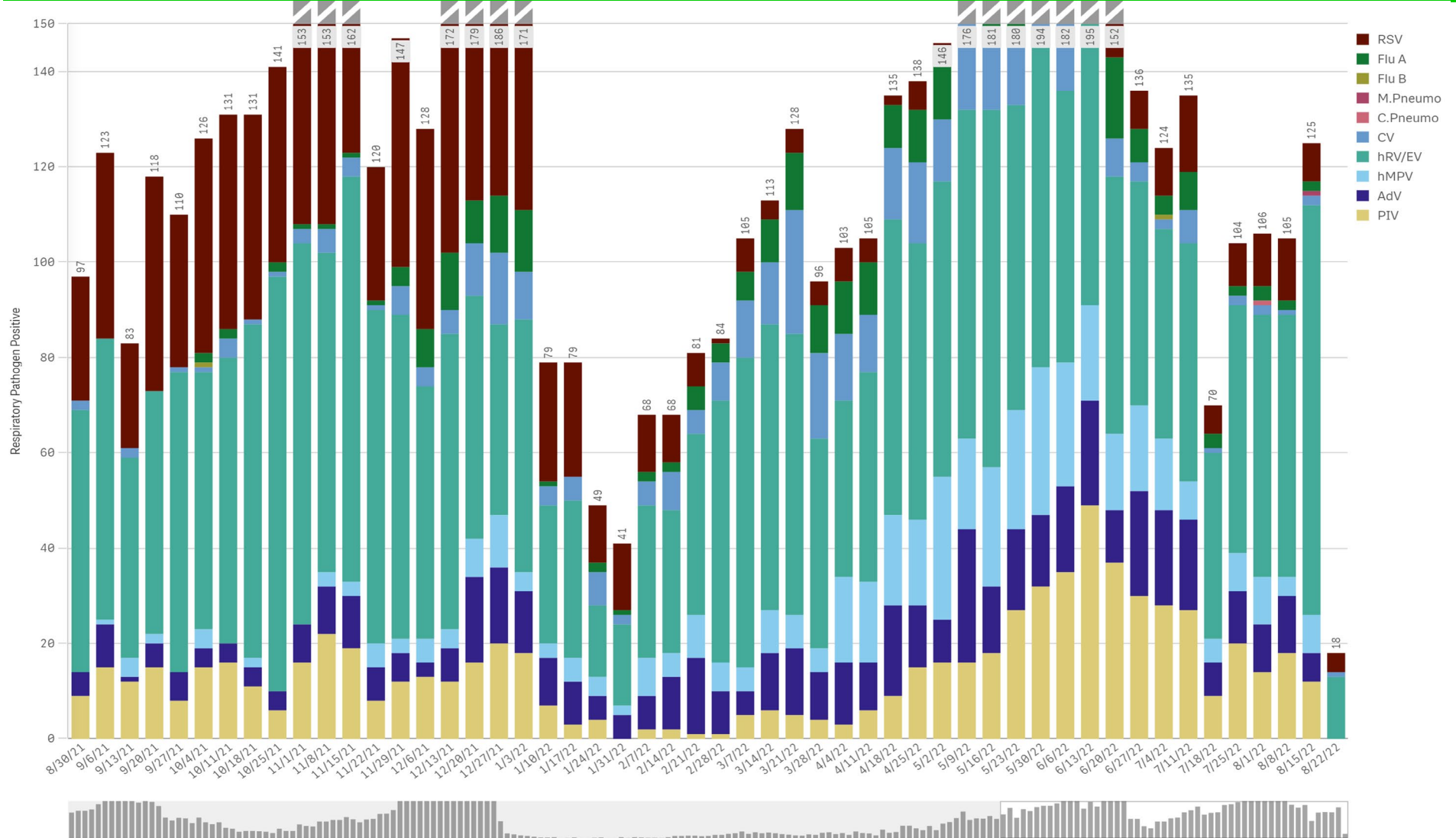
SARS-CoV-2 Positive Cases



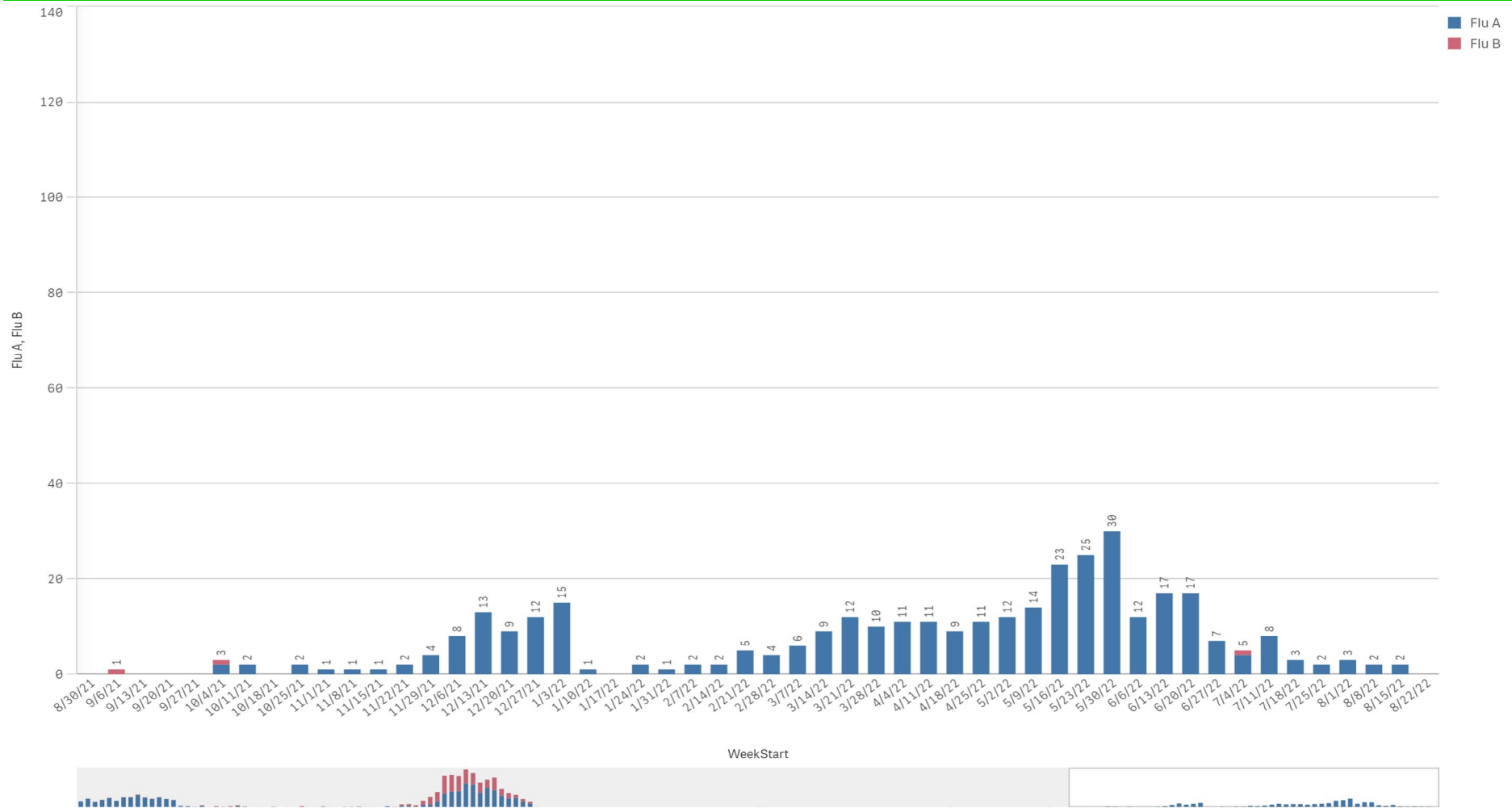
SARS-CoV-2 Positive by Encounter Type - Data as of 8/22/2022



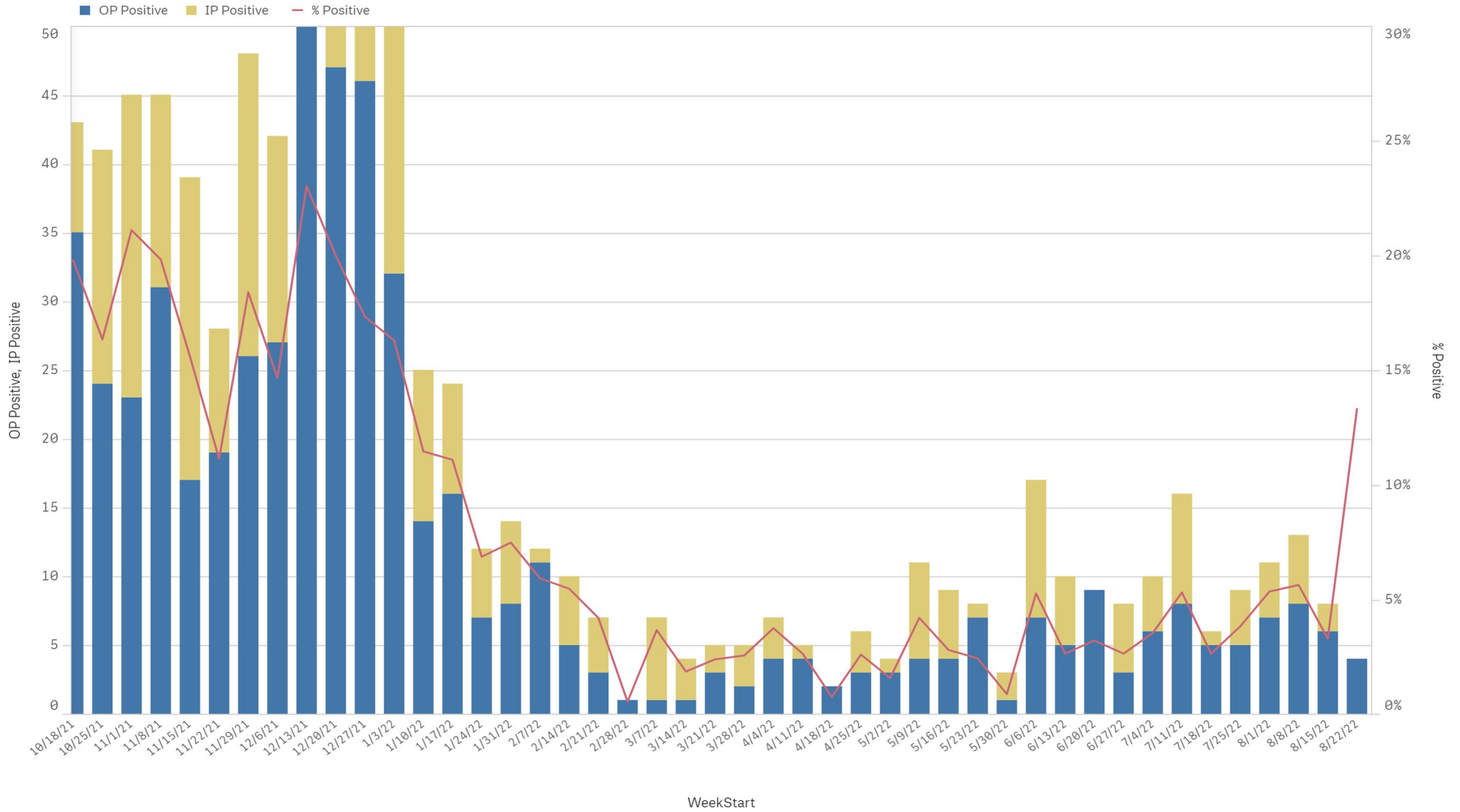
Positive Respiratory Pathogens by Week Start (excl SARS) - Data as of 8/22/2022



Influenza A & B Positive by Week Start - Data as of 8/22/2022



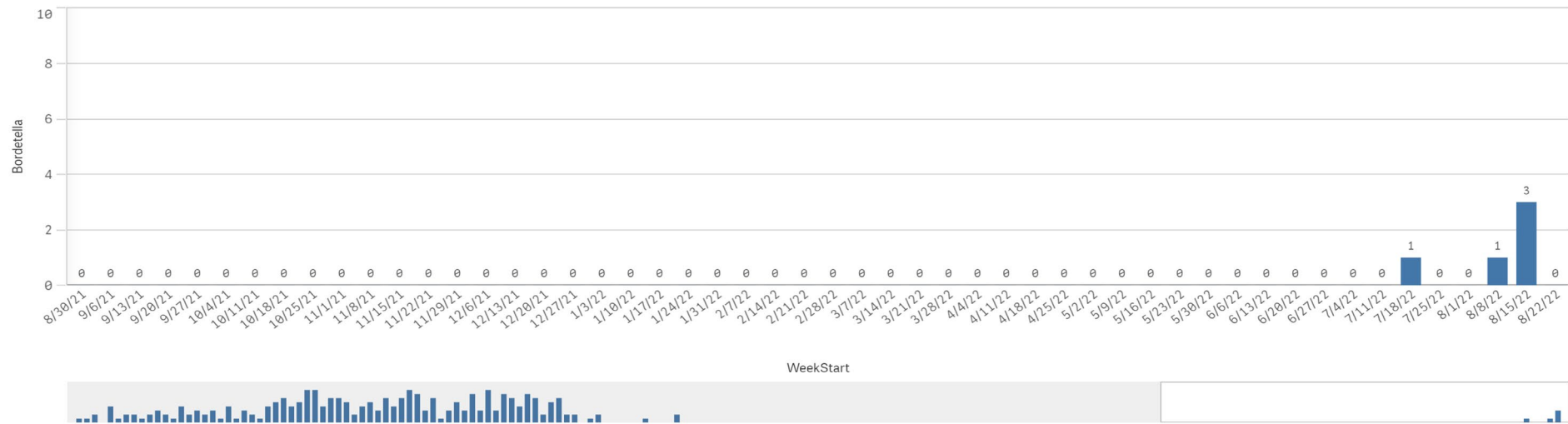
RSV - Data as of 8/22/2022



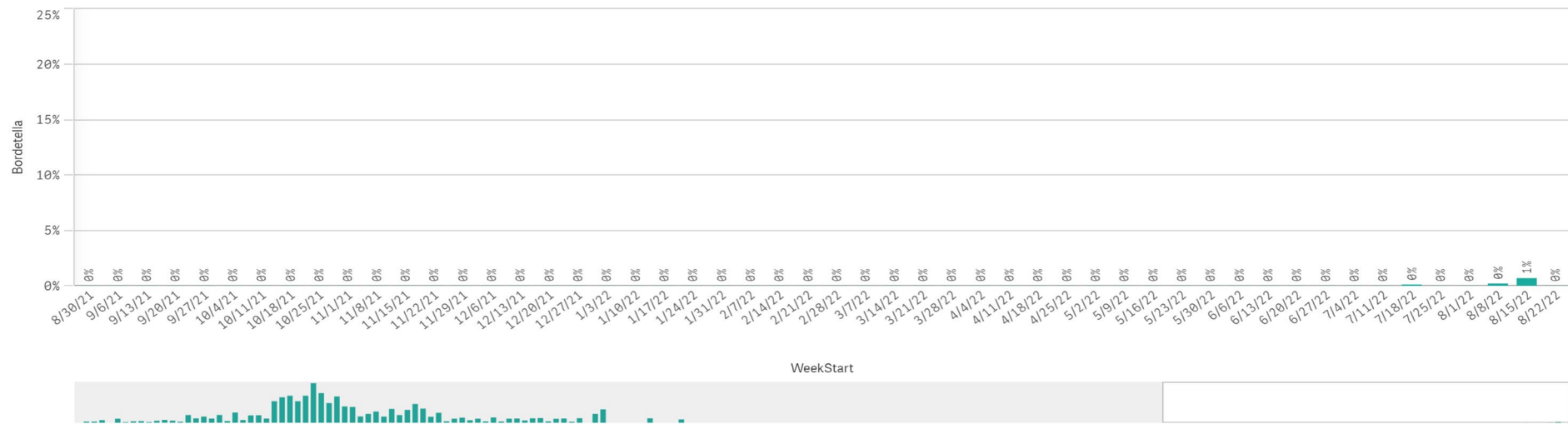
B. Pert/Parap Positives by Week Start - Data as of 8/22/2022



B. Pertussis/Parapertussis Positives by Week



B.pertussis / B.parapertussis % Positive by Week



Enterovirus by Week Start - Data as of 8/22/2022

Enterovirus CSF Positive by Week

