

# Volume and Positive Rate

Volume and Positive Rate - Data as of \*\*YTD for this data starts on the first Monday in October.



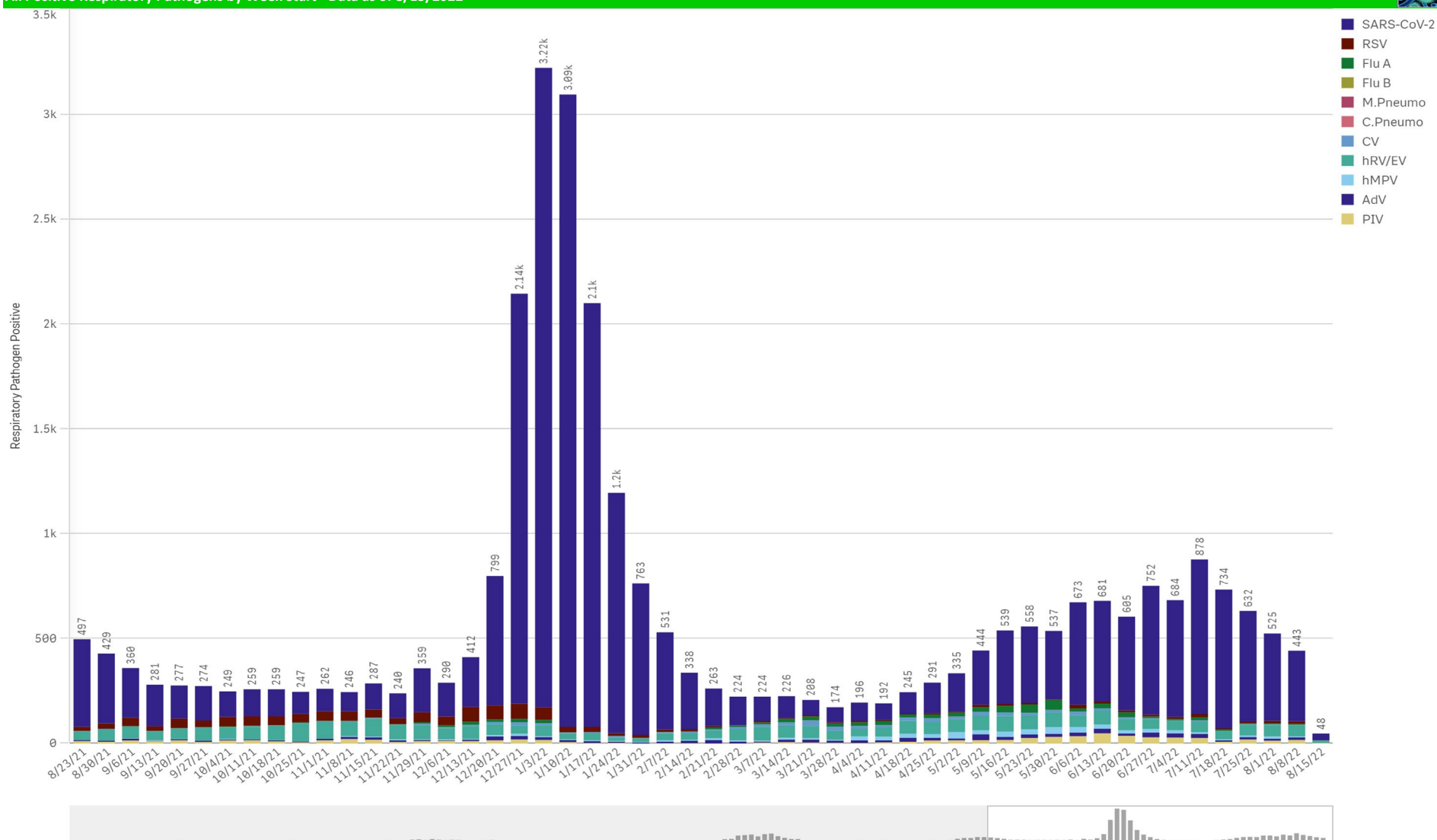
Component Group	Q	Pathogen Positive Previous Week 8/8/2022 - 8/14/2022	Pathogen Tests Previous Week 8/8/2022 - 8/14/2022	Previous Week Positive Rate	Pathogen Positive Current WTD* 8/15/2022 - 8/21/2022	Pathogen Tests Current WTD* 8/15/2022 - 8/21/2022	Current WTD** Positive Rate	Pathogen Tested YTD**	Pathogen Positive YTD**	Positive Rate YTD**
<b>Totals</b>		<b>445</b>	<b>4,101</b>	<b>10.9%</b>	<b>45</b>	<b>470</b>	<b>9.6%</b>	<b>270,732</b>	<b>28,041</b>	<b>10%</b>
COVID-19(SARS-CoV-2,PCR)		345	3,479	9.9%	31	391	7.9%	240,544	22,896	10%
Human Rhinovirus/Enterovirus		55	193	28.5%	12	24	50.0%	8,687	2,451	28%
Parainfluenza		18	193	9.3%	3	24	12.5%	8,687	656	8%
RSV		13	231	5.6%	1	31	3.2%	11,260	980	9%
Adenovirus		12	193	6.2%	0	24	0.0%	8,687	518	6%
Human Metapneumovirus		4	193	2.1%	1	24	4.2%	8,687	453	5%
Influenza A		2	234	0.9%	0	31	0.0%	12,992	347	3%
B.Pertussis/Parapertussis		1	5	20.0%	0	0	-	803	2	0%
Coronavirus(other than COVID-19)		1	193	0.5%	0	24	0.0%	8,687	371	4%
Chlamydia Pneumoniae		0	193	0.0%	0	24	0.0%	8,687	1	0%
Enterovirus,CSF		0	0	-	0	0	-	31	0	0%
Influenza B		0	234	0.0%	0	31	0.0%	12,992	2	0%
Mycoplasma Pneumoniae		0	193	0.0%	0	24	0.0%	8,687	0	0%

\*Current WTD may not be a completed week, depending on when the data is being reviewed. Refer to data date on page header for reference.

\*\*YTD for this data starts on the first Monday in October.

\*Current WTD may not be a complete week, depending on when data is being reviewed. Refer to data date on page header for reference.  
\*\*YTD for this data starts on the first Monday in October.

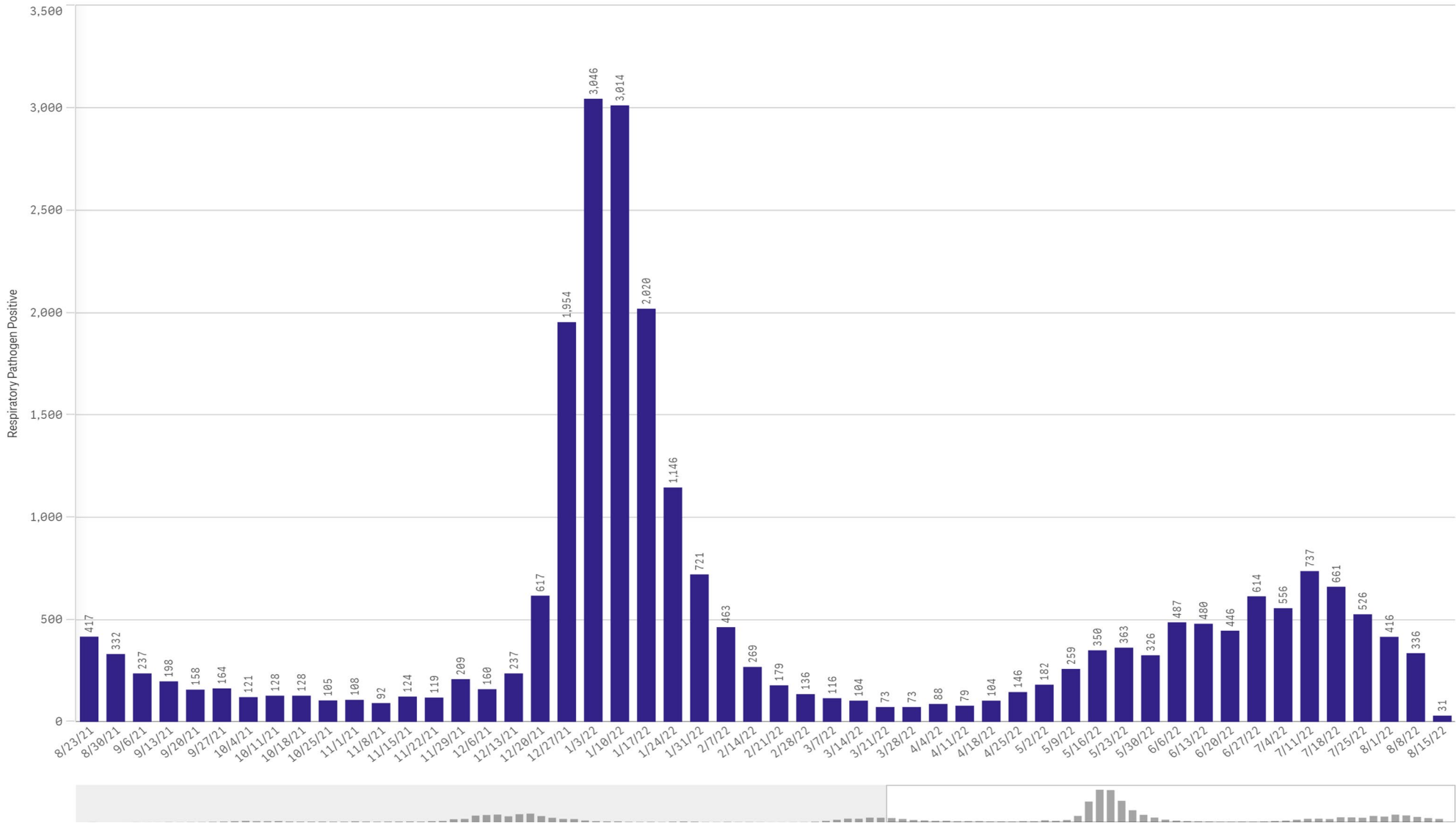
All Positive Respiratory Pathogens by Week Start - Data as of 8/15/2022



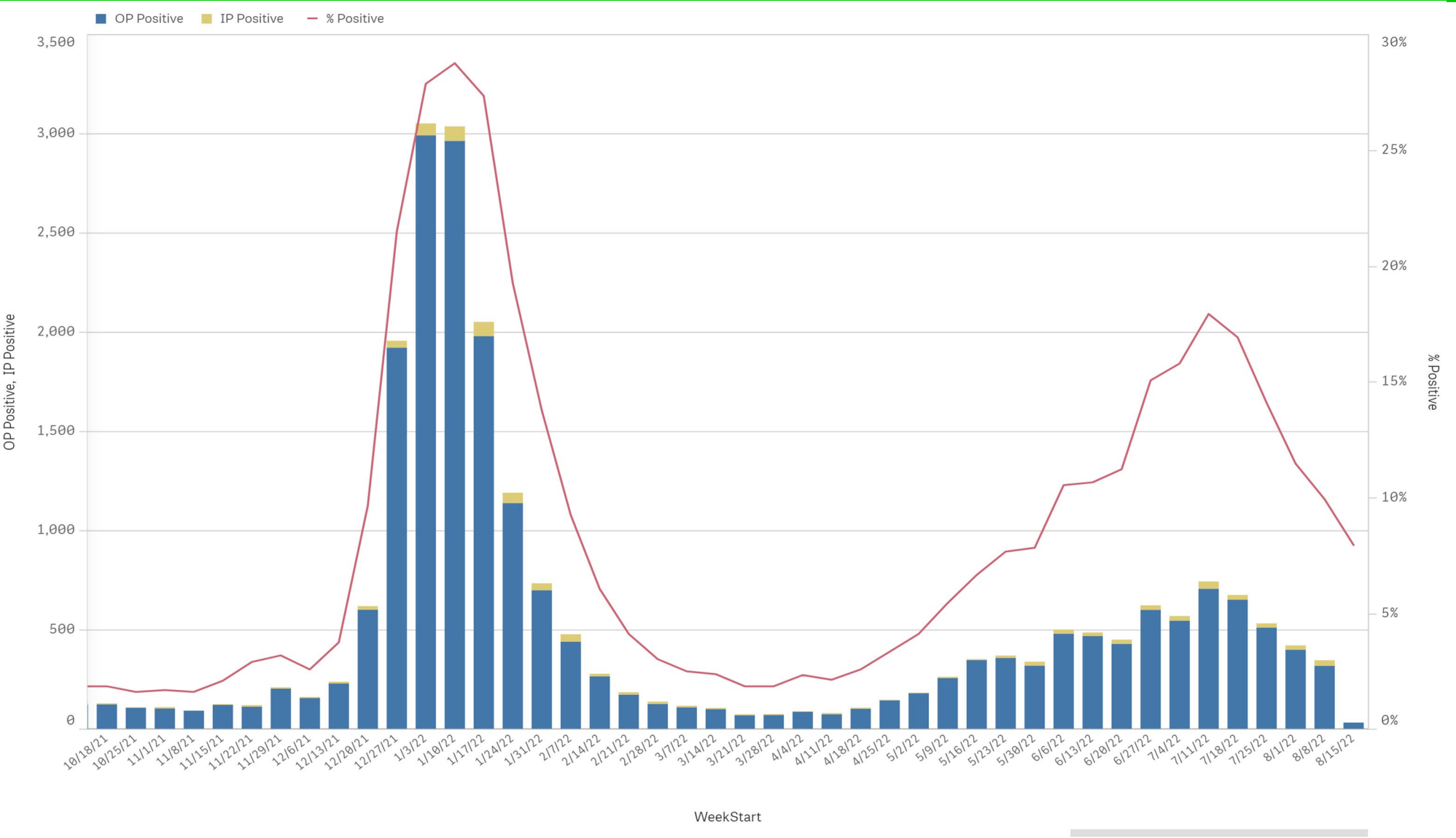
Positive SARS-CoV-2 Pathogens by Week Start - Data as of 8/15/2022



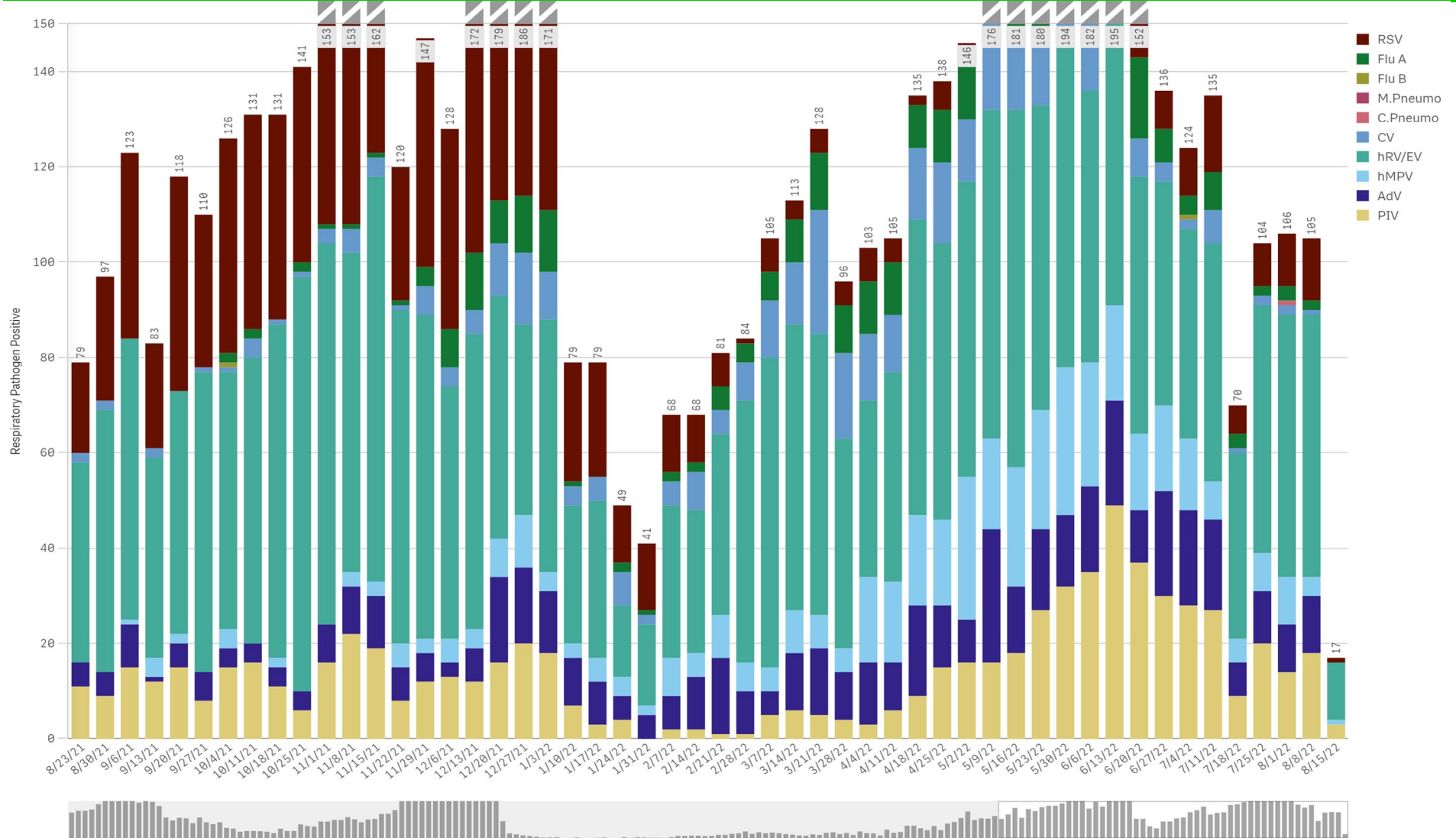
SARS-CoV-2 Positive Cases



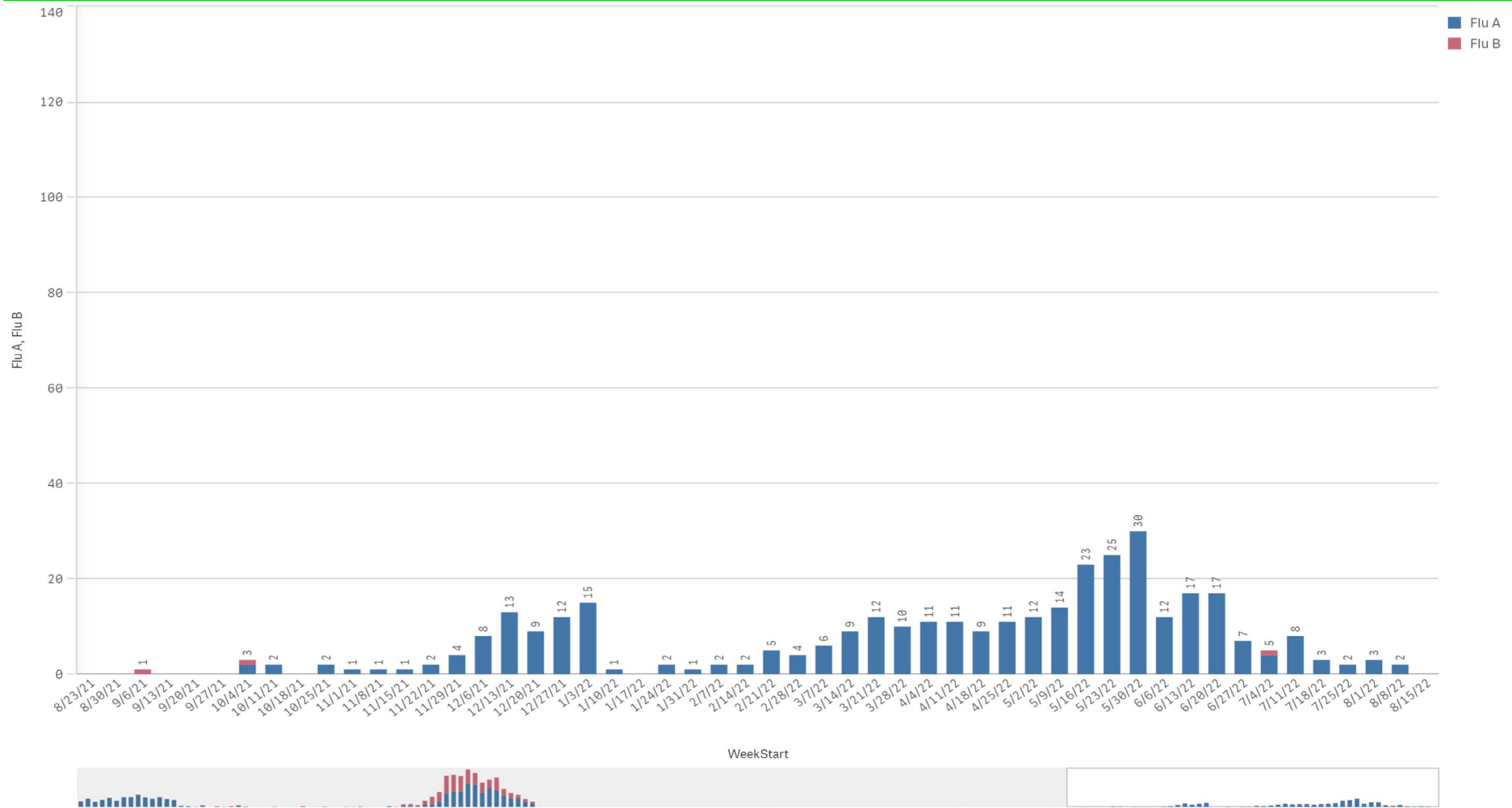
SARS-CoV-2 Positive by Encounter Type - Data as of 8/15/2022



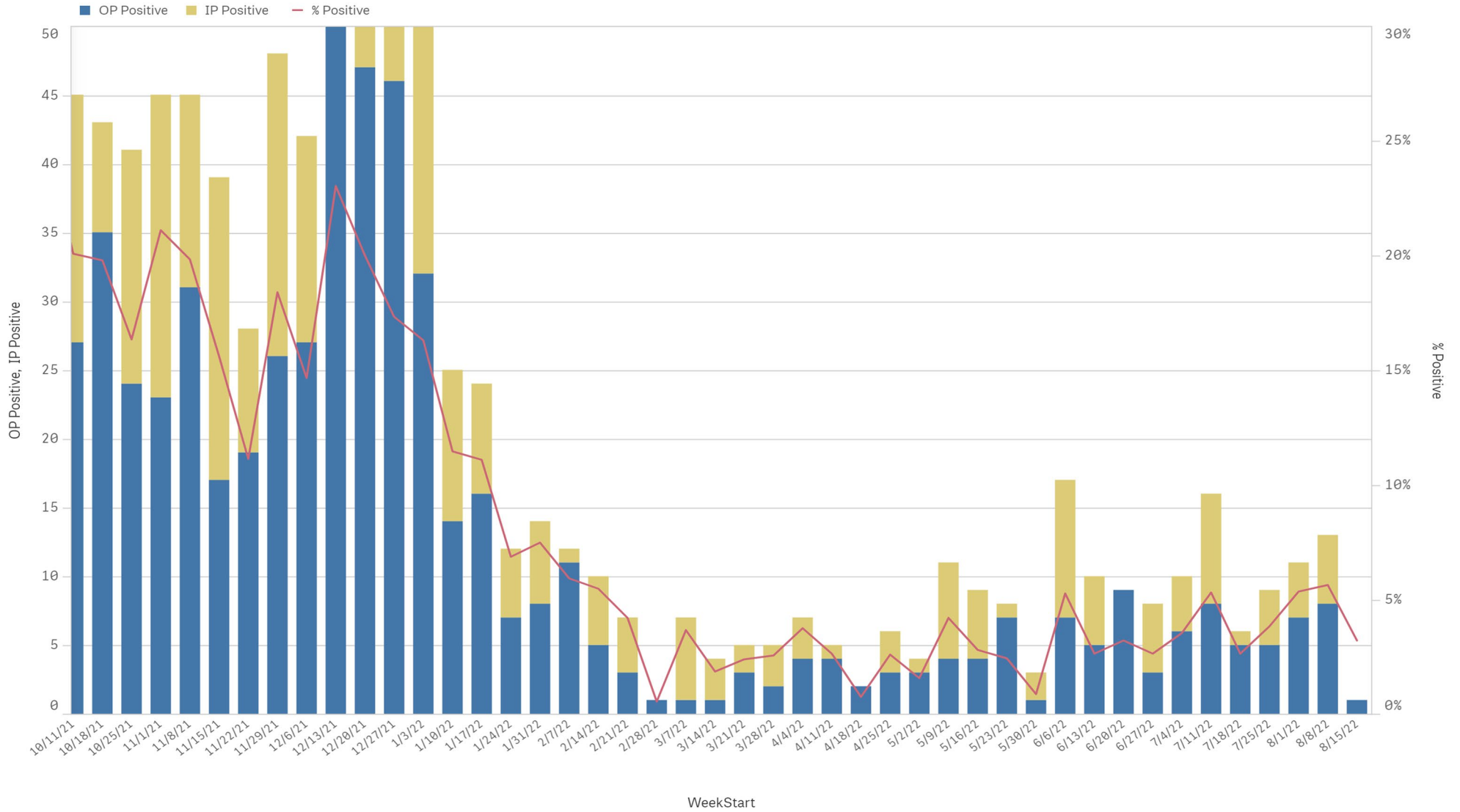
Positive Respiratory Pathogens by Week Start (excl SARS) - Data as of 8/15/2022



Influenza A & B Positive by Week Start - Data as of 8/15/2022



RSV - Data as of 8/15/2022

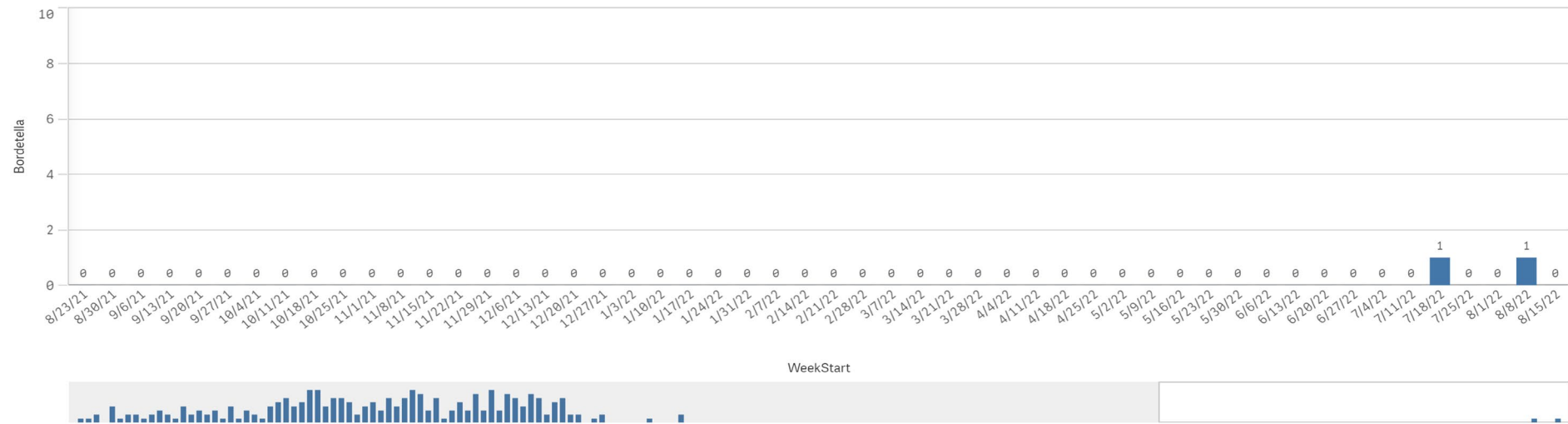




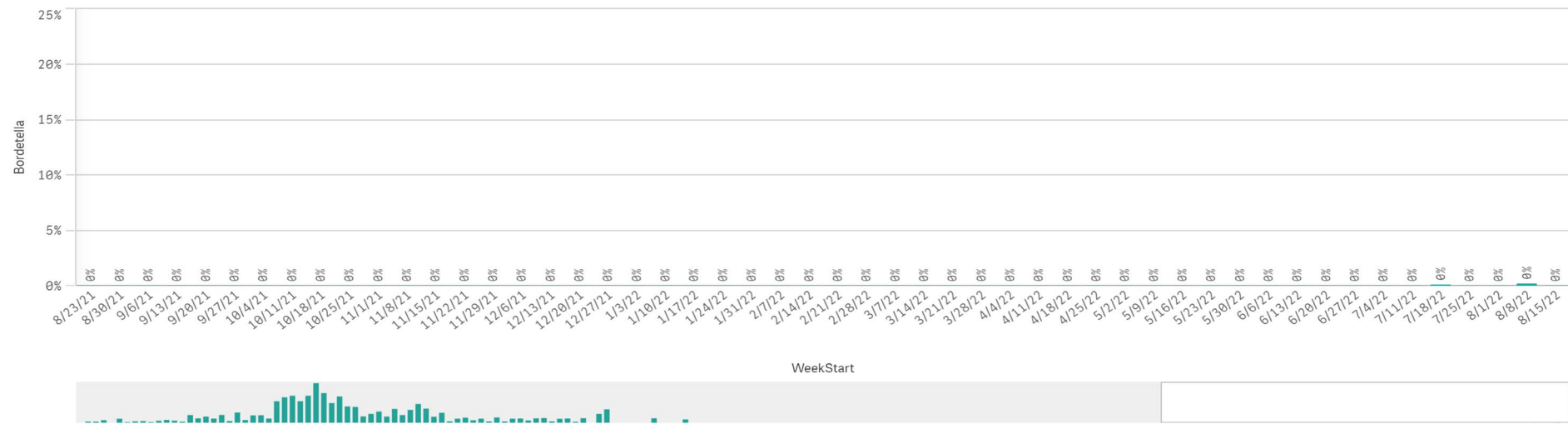
B. Pert/Parap Positives by Week Start - Data as of 8/15/2022



B. Pertussis/Parapertussis Positives by Week



B.pertussis / B.parapertussis % Positive by Week



Enterovirus by Week Start - Data as of 8/15/2022

Enterovirus CSF Positive by Week

