

Volume and Positive Rate

Volume and Positive Rate - Data as of \*\*YTD for this data starts on the first Monday in October.



Component Group	Q	Pathogen Positive Previous Week 6/12/2023 - 6/18/2023	Pathogen Tests Previous Week 6/12/2023 - 6/18/2023	Previous Week Positive Rate	Pathogen Positive Current WTD* 6/19/2023 - 6/25/2023	Pathogen Tests Current WTD* 6/19/2023 - 6/25/2023	Current WTD** Positive Rate	Pathogen Tested YTD**	Pathogen Positive YTD**	Positive Rate YTD**
<b>Totals</b>		<b>199</b>	<b>1,567</b>	<b>12.7%</b>	<b>172</b>	<b>1,343</b>	<b>12.8%</b>	<b>120,317</b>	<b>14,303</b>	<b>12%</b>
Human Rhinovirus/Enterovirus		96	288	33.3%	61	264	23.1%	10,707	3,038	28%
Adenovirus		77	288	26.7%	69	264	26.1%	10,707	1,407	13%
Parainfluenza		29	288	10.1%	24	264	9.1%	10,707	781	7%
COVID-19(SARS-CoV-2,PCR)		12	655	1.8%	20	529	3.8%	78,862	3,660	5%
Human Metapneumovirus		5	288	1.7%	5	264	1.9%	10,707	735	7%
Coronavirus(other than COVID-19)		4	288	1.4%	2	264	0.8%	10,707	540	5%
B.Pertussis/Parapertussis		3	24	12.5%	3	19	15.8%	1,008	70	7%
RSV		3	357	0.8%	0	304	0.0%	21,835	2,520	12%
Influenza A		1	357	0.3%	2	304	0.7%	21,843	2,476	11%
Chlamydia Pneumoniae		0	288	0.0%	0	264	0.0%	10,707	2	0%
Enterovirus,CSF		0	0	-	0	0	-	15	1	7%
Influenza B		0	357	0.0%	0	304	0.0%	21,843	43	0%
Mycoplasma Pneumoniae		0	288	0.0%	0	264	0.0%	10,707	1	0%

\*Current WTD may not be a completed week, depending on when the data is being reviewed. Refer to data date on page header for reference.

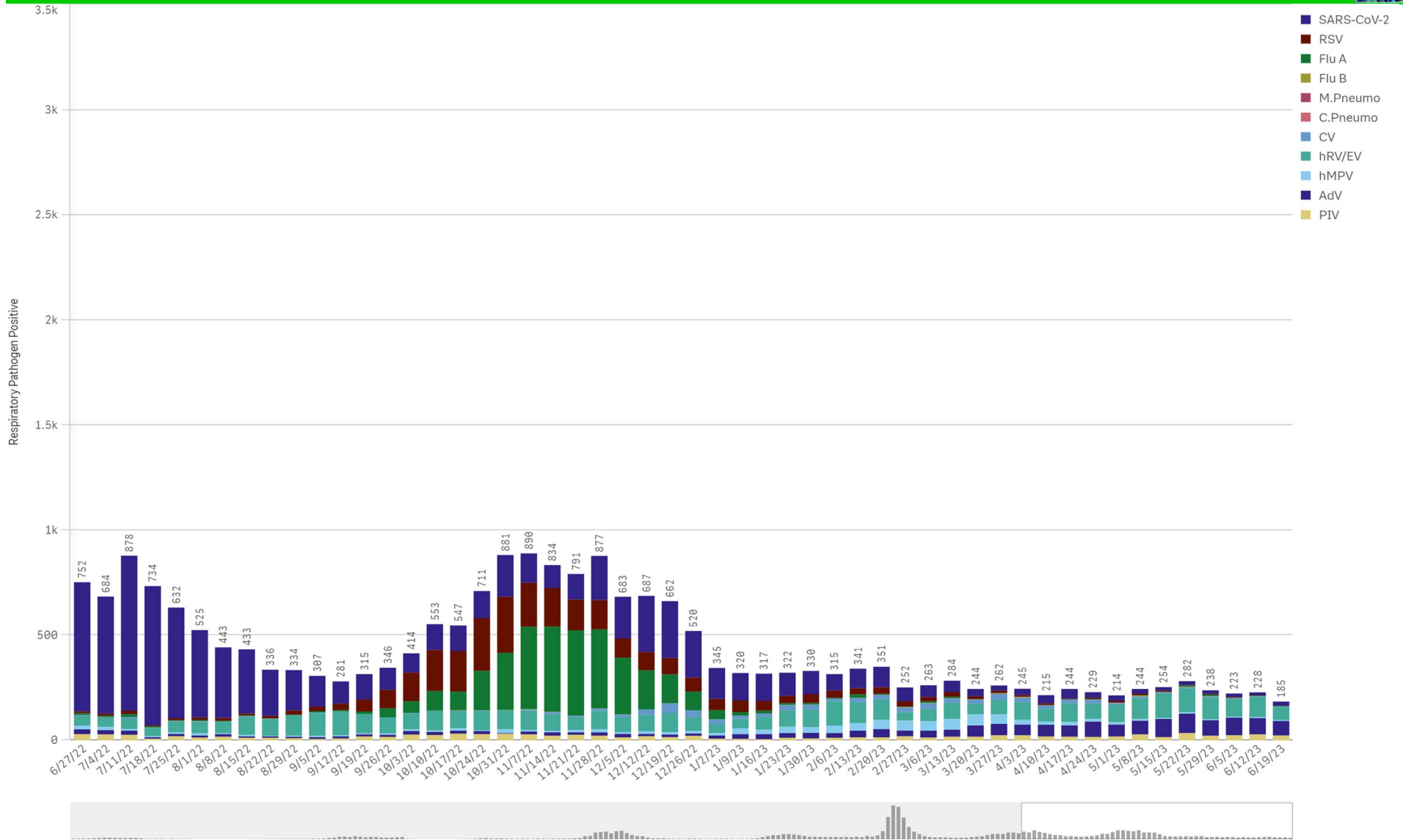
\*\*YTD for this data starts on the first Monday in October.

\*Current WTD may not be a complete week, depending on when data is being reviewed. Refer to data date on page header for reference.

\*\*YTD for this data starts on the first Monday in October.

Positive Respiratory Pathogens by Week

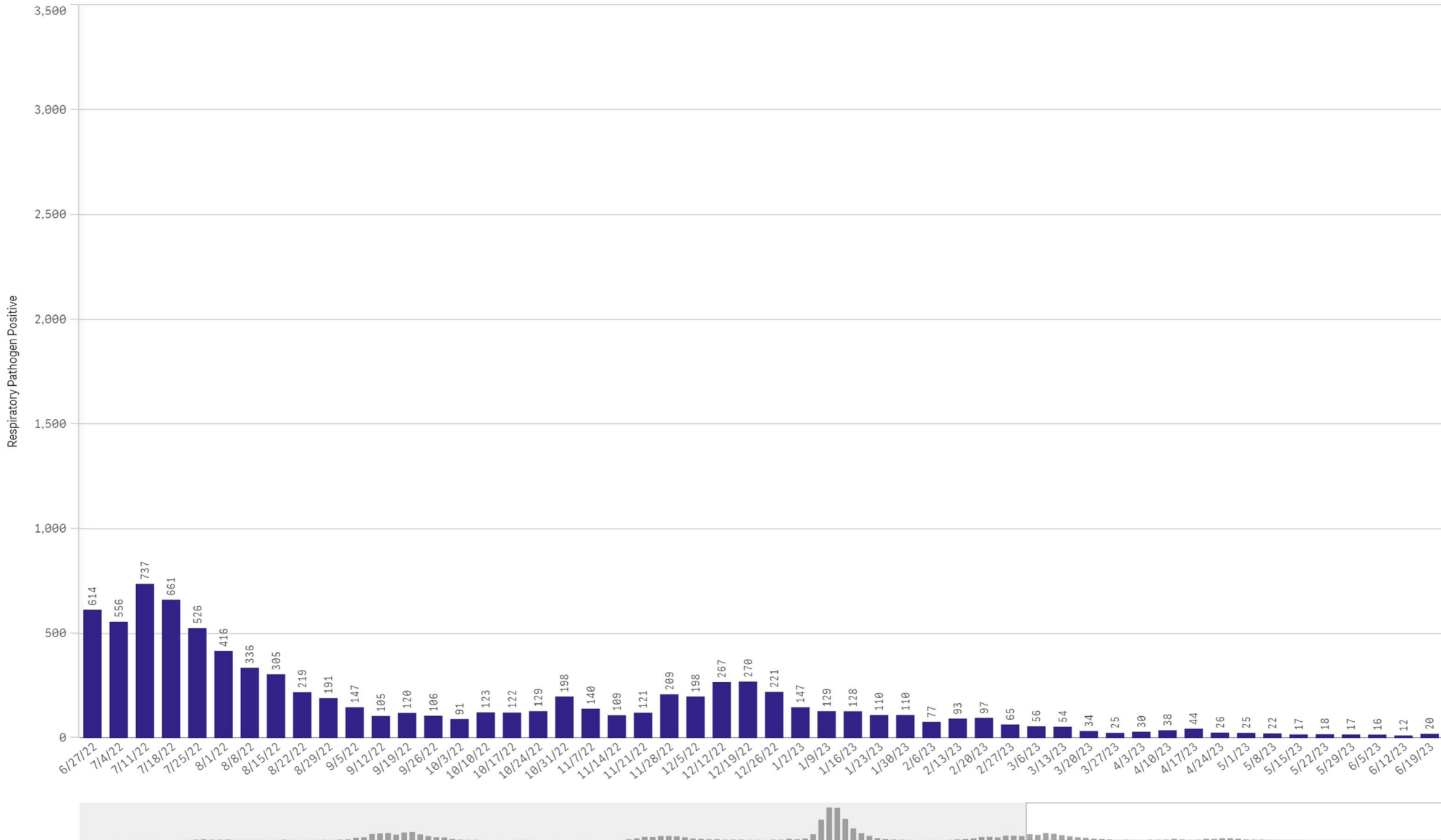
All Positive Respiratory Pathogens by Week Start - Data as of 6/25/2023



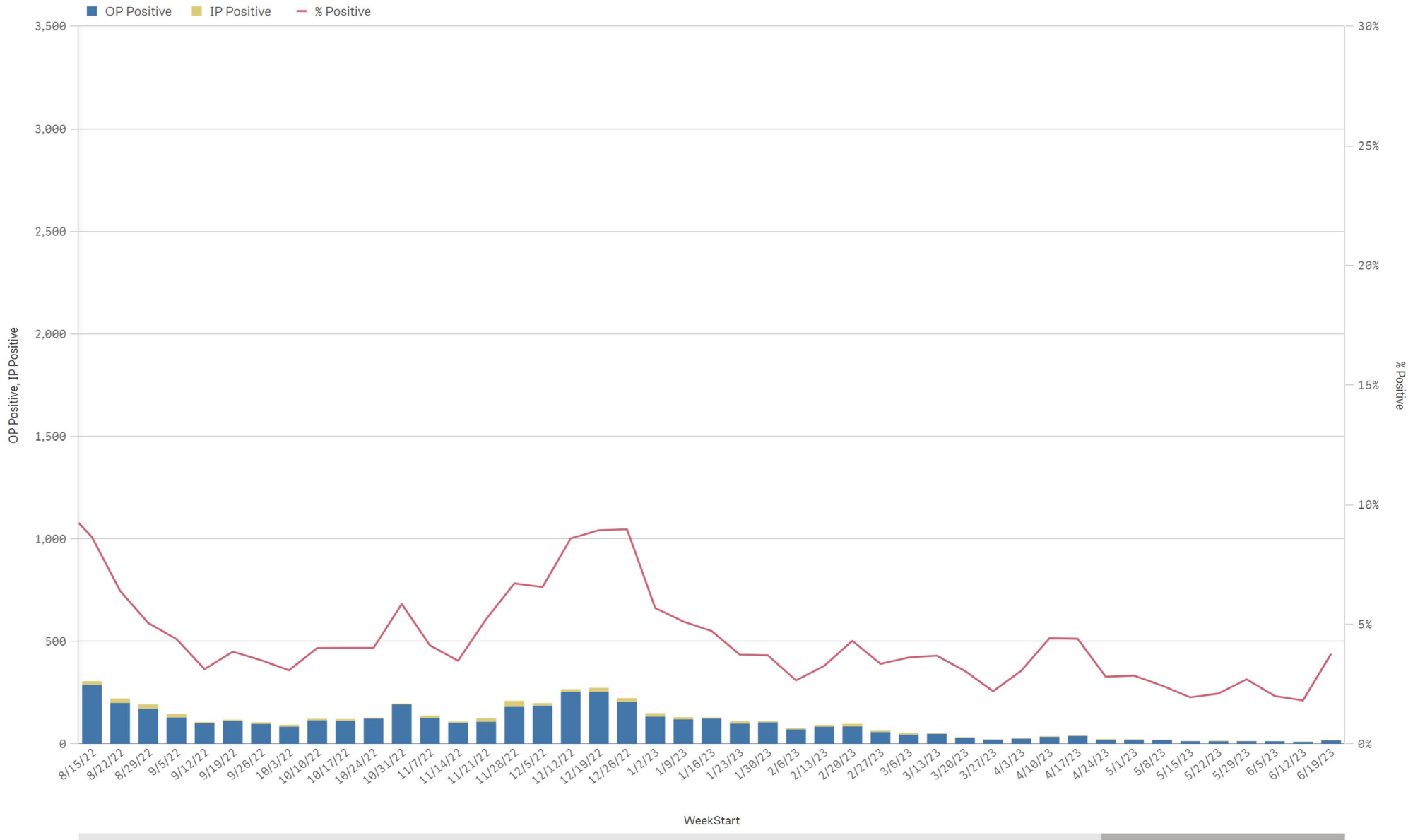
Positive SARS-CoV-2 Pathogens by Week Start - Data as of 6/25/2023



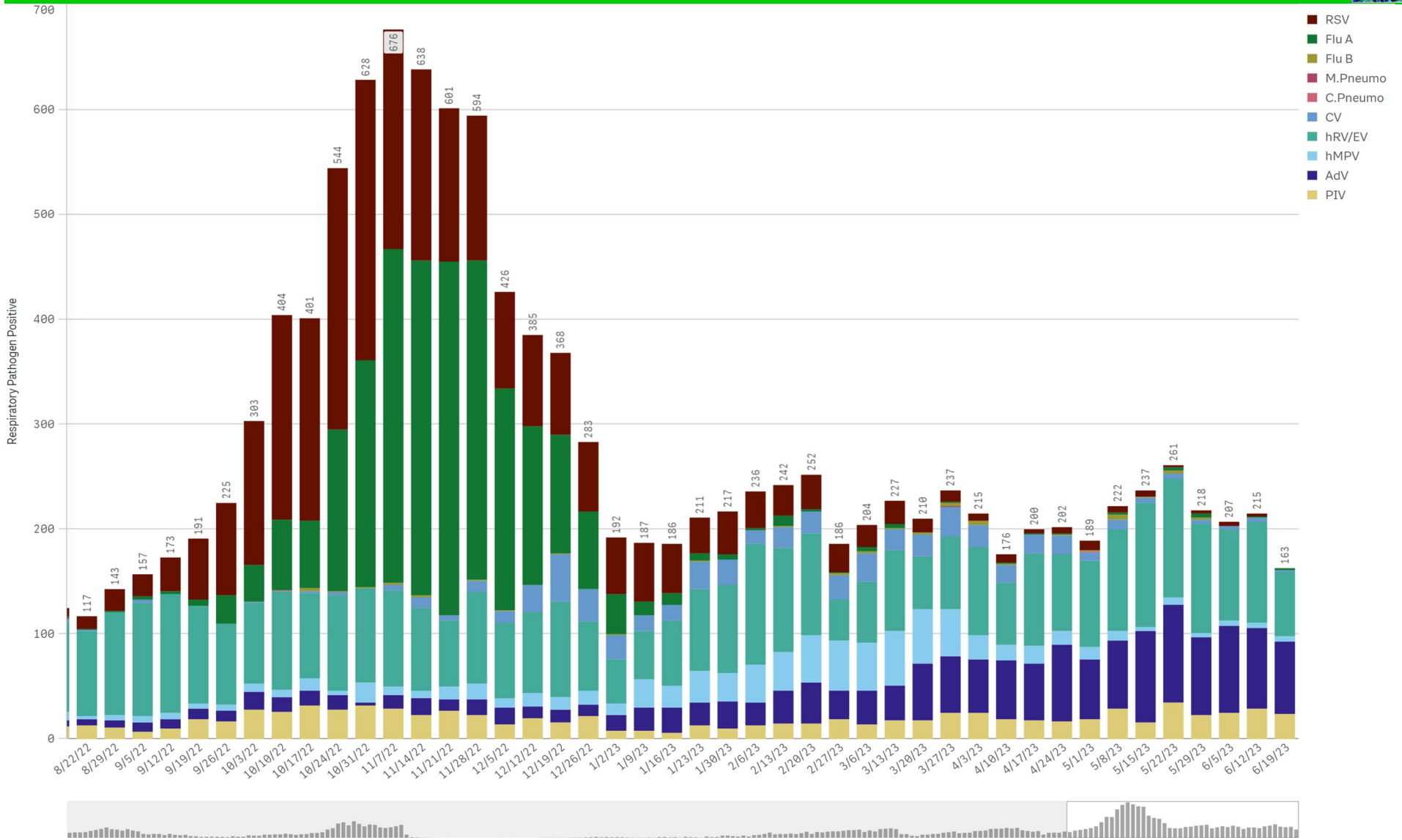
SARS-CoV-2 Positive Cases



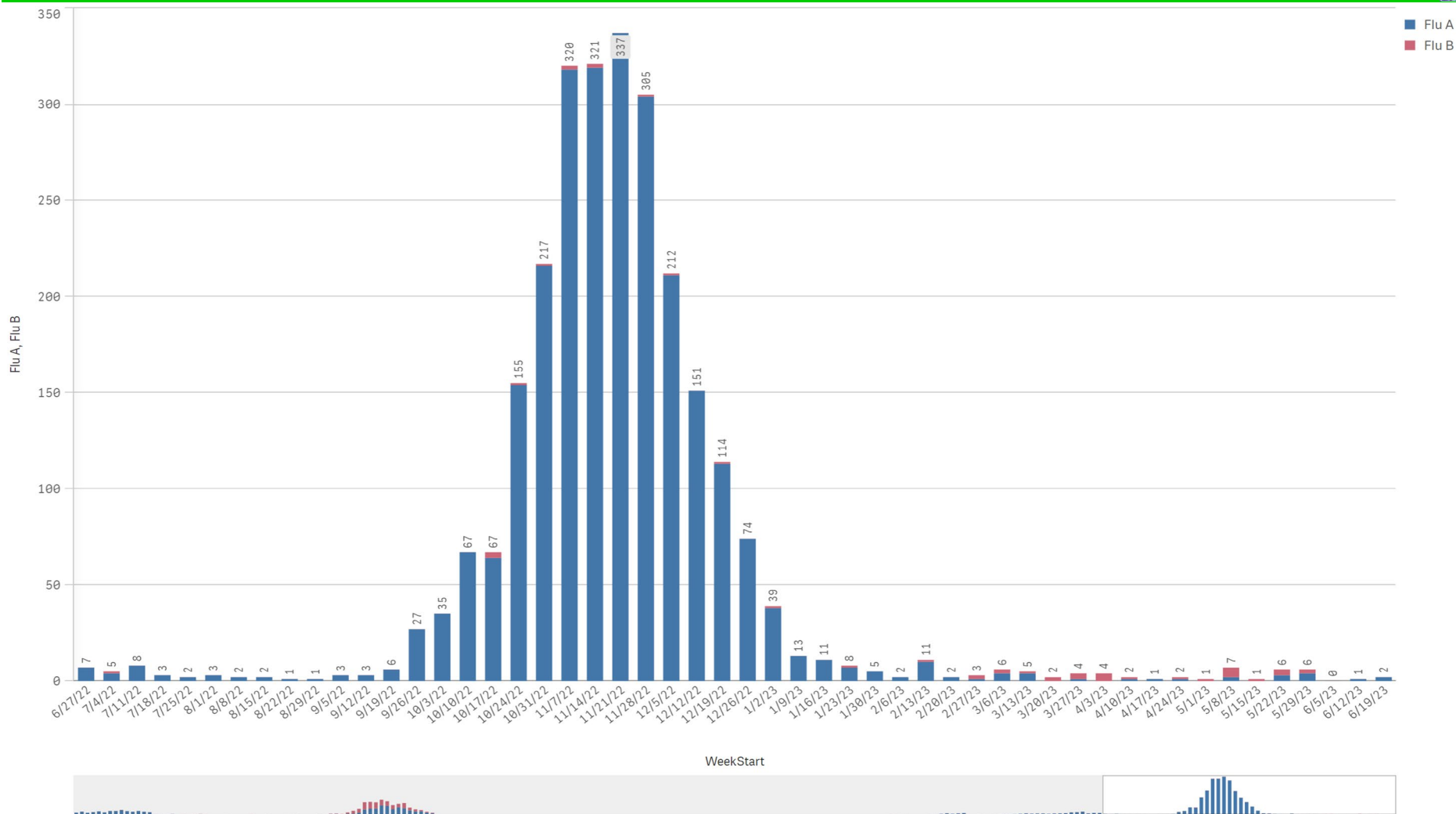
SARS-CoV-2 Positive by Encounter Type - Data as of 6/25/2023



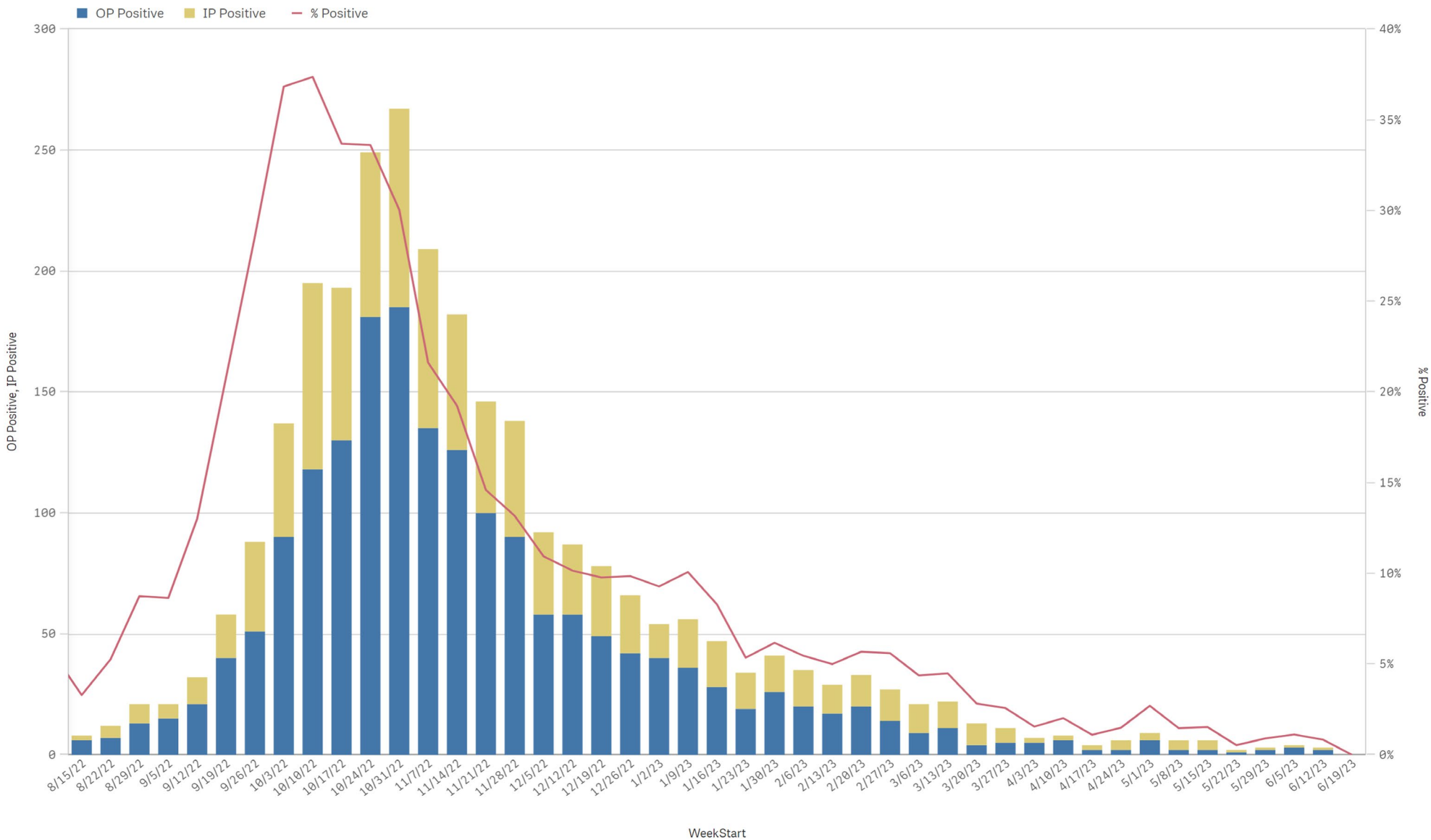
Positive Respiratory Pathogens by Week Start (excl SARS) - Data as of 6/25/2023



Influenza A & B Positive by Week Start - Data as of 6/25/2023



RSV - Data as of 6/25/2023

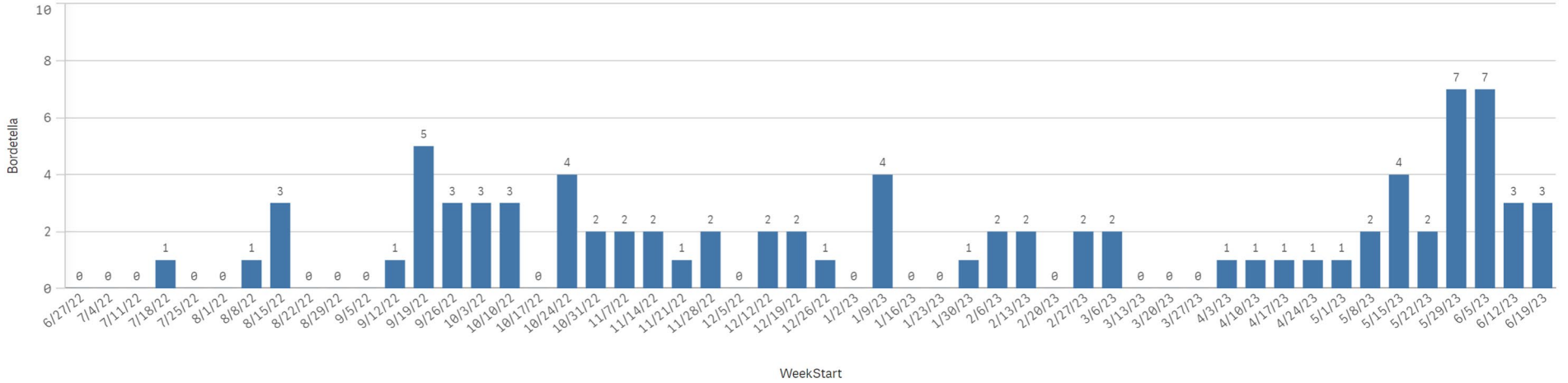




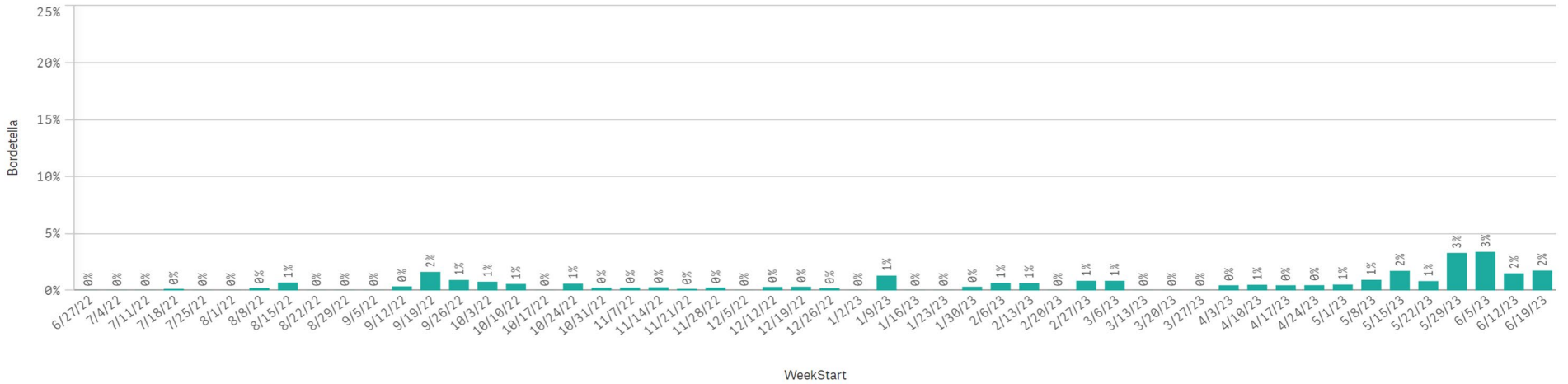
B. Pert/Parap Positives by Week Start - Data as of 6/25/2023



B. Pertussis/Parapertussis Positives by Week

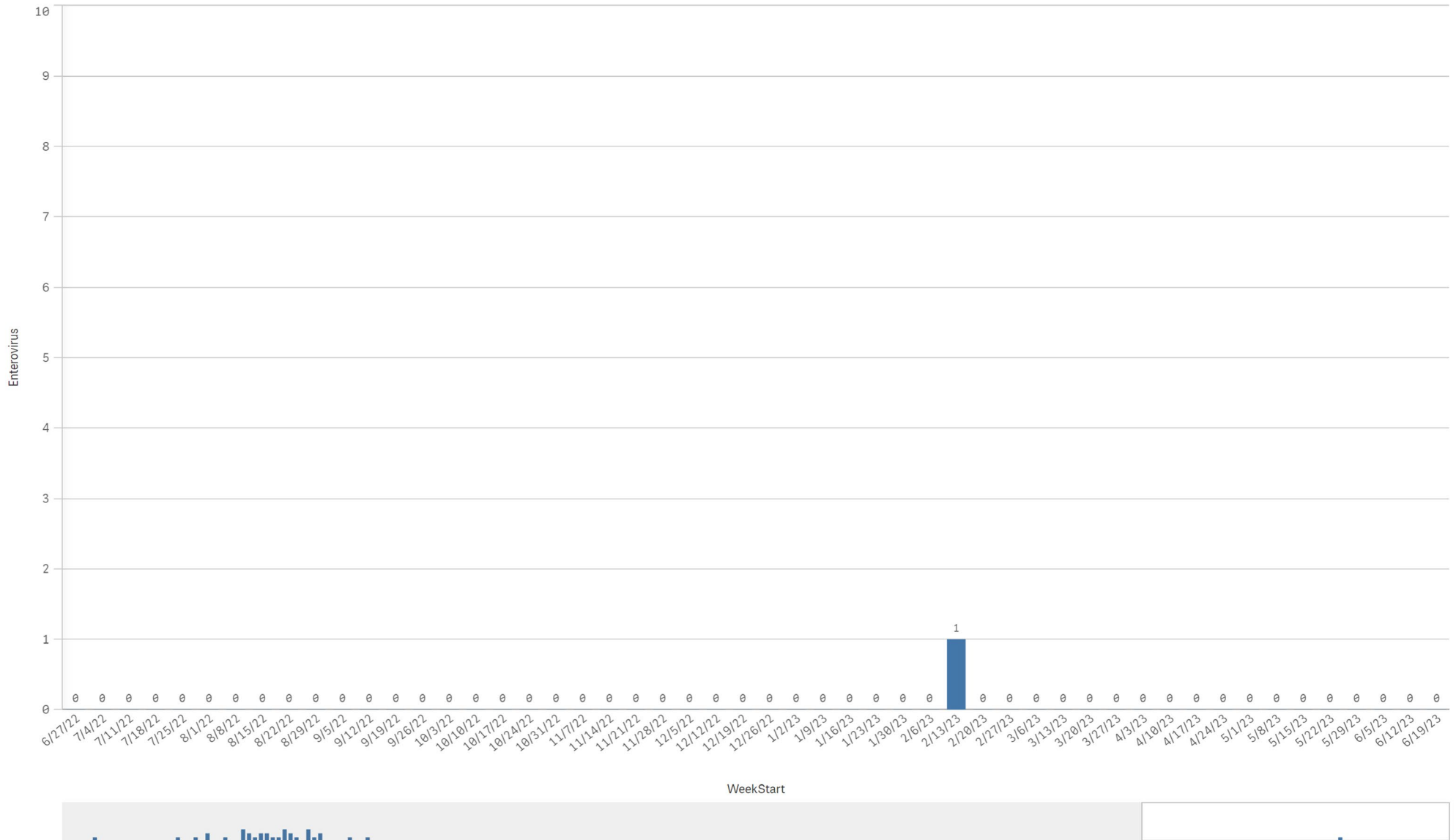


B.pertussis / B.parapertussis % Positive by Week





Enterovirus CSF Positive by Week



Enterovirus