

Volume and Positive Rate

Volume and Positive Rate - Data as of **YTD for this data starts on the first Monday in October.



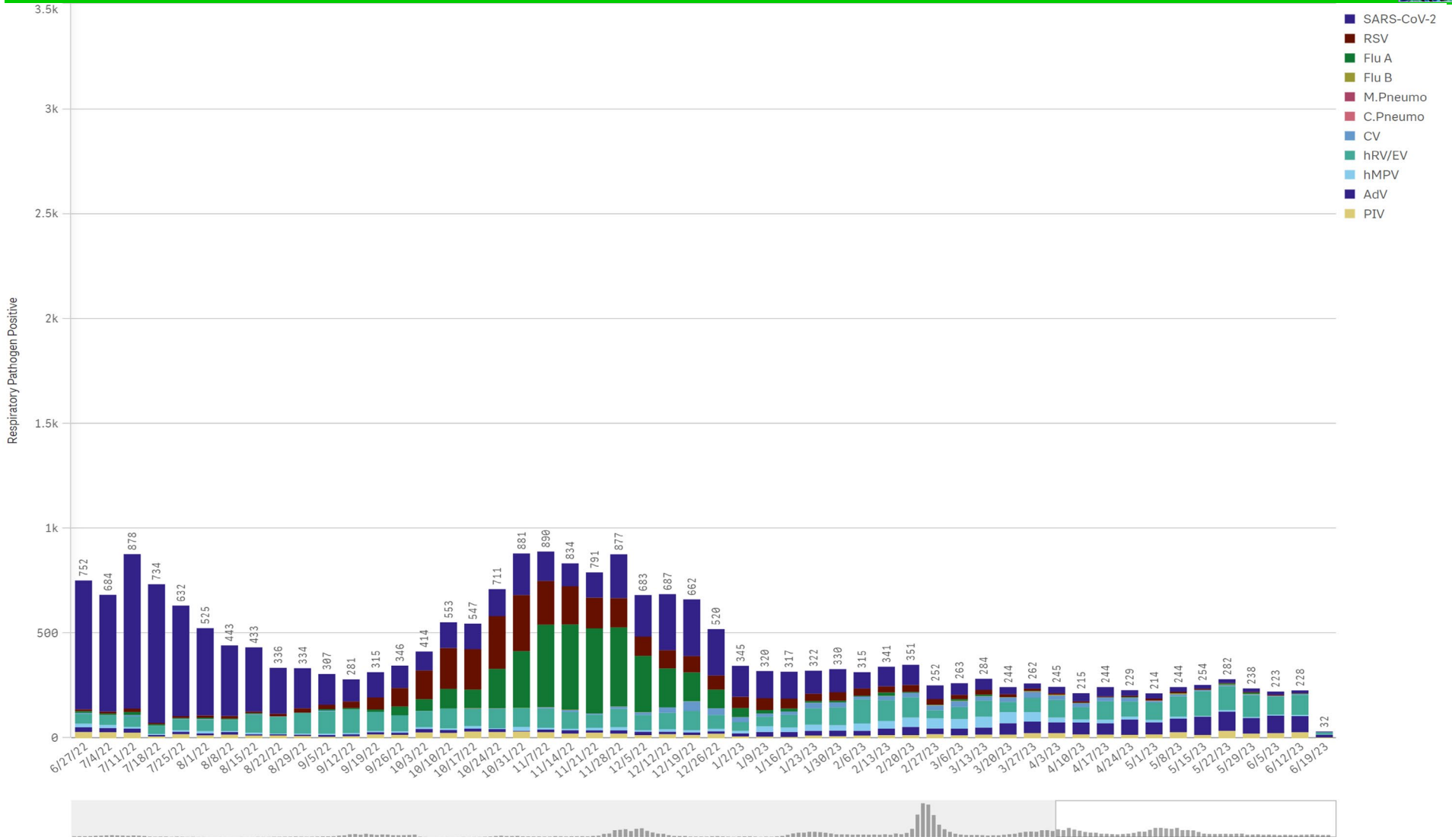
Component Group	Q	Pathogen Positive Previous Week 6/12/2023 - 6/18/2023	Pathogen Tests Previous Week 6/12/2023 - 6/18/2023	Previous Week Positive Rate	Pathogen Positive Current WTD* 6/19/2023 - 6/25/2023	Pathogen Tests Current WTD* 6/19/2023 - 6/25/2023	Current WTD** Positive Rate	Pathogen Tested YTD**	Pathogen Positive YTD**	Positive Rate YTD**
Totals		199	1,567	12.7%	30	208	14.4%	119,182	14,161	12%
Human Rhinovirus/Enterovirus		96	288	33.3%	11	47	23.4%	10,490	2,988	28%
Adenovirus		77	288	26.7%	13	47	27.7%	10,490	1,351	13%
Parainfluenza		29	288	10.1%	4	47	8.5%	10,490	761	7%
COVID-19(SARS-CoV-2,PCR)		12	655	1.8%	3	66	4.5%	78,399	3,643	5%
Human Metapneumovirus		5	288	1.7%	1	47	2.1%	10,490	731	7%
Coronavirus(other than COVID-19)		4	288	1.4%	0	47	0.0%	10,490	538	5%
B.Pertussis/Parapertussis		3	24	12.5%	0	1	0.0%	990	67	7%
RSV		3	357	0.8%	0	48	0.0%	21,579	2,520	12%
Influenza A		1	357	0.3%	0	48	0.0%	21,587	2,474	11%
Chlamydia Pneumoniae		0	288	0.0%	0	47	0.0%	10,490	2	0%
Enterovirus,CSF		0	0	-	0	0	-	15	1	7%
Influenza B		0	357	0.0%	0	48	0.0%	21,587	43	0%
Mycoplasma Pneumoniae		0	288	0.0%	0	47	0.0%	10,490	1	0%

*Current WTD may not be a completed week, depending on when the data is being reviewed. Refer to data date on page header for reference.

**YTD for this data starts on the first Monday in October.

*Current WTD may not be a complete week, depending on when data is being reviewed. Refer to data date on page header for reference.
**YTD for this data starts on the first Monday in October.

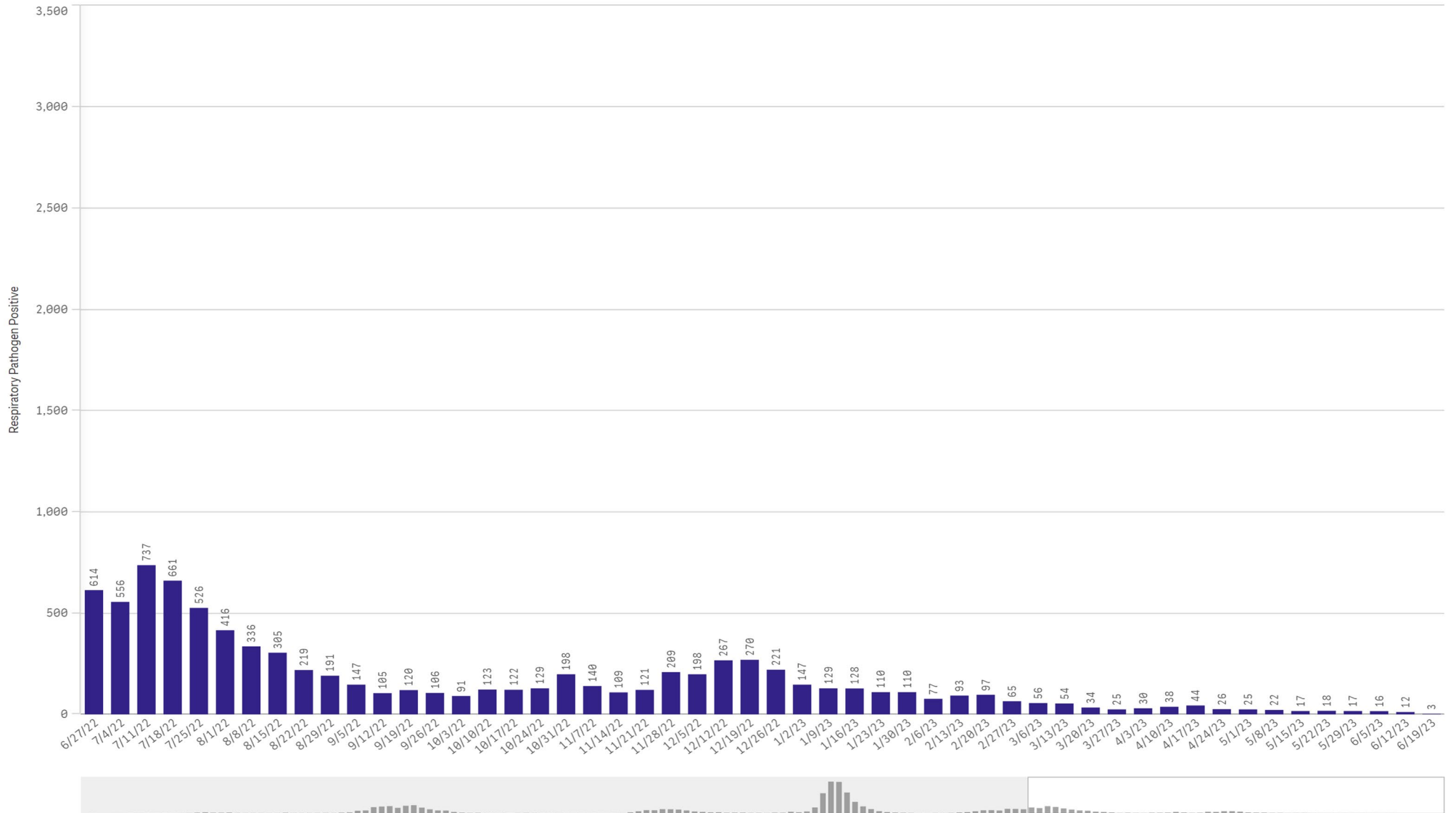
All Positive Respiratory Pathogens by Week Start - Data as of 6/19/2023



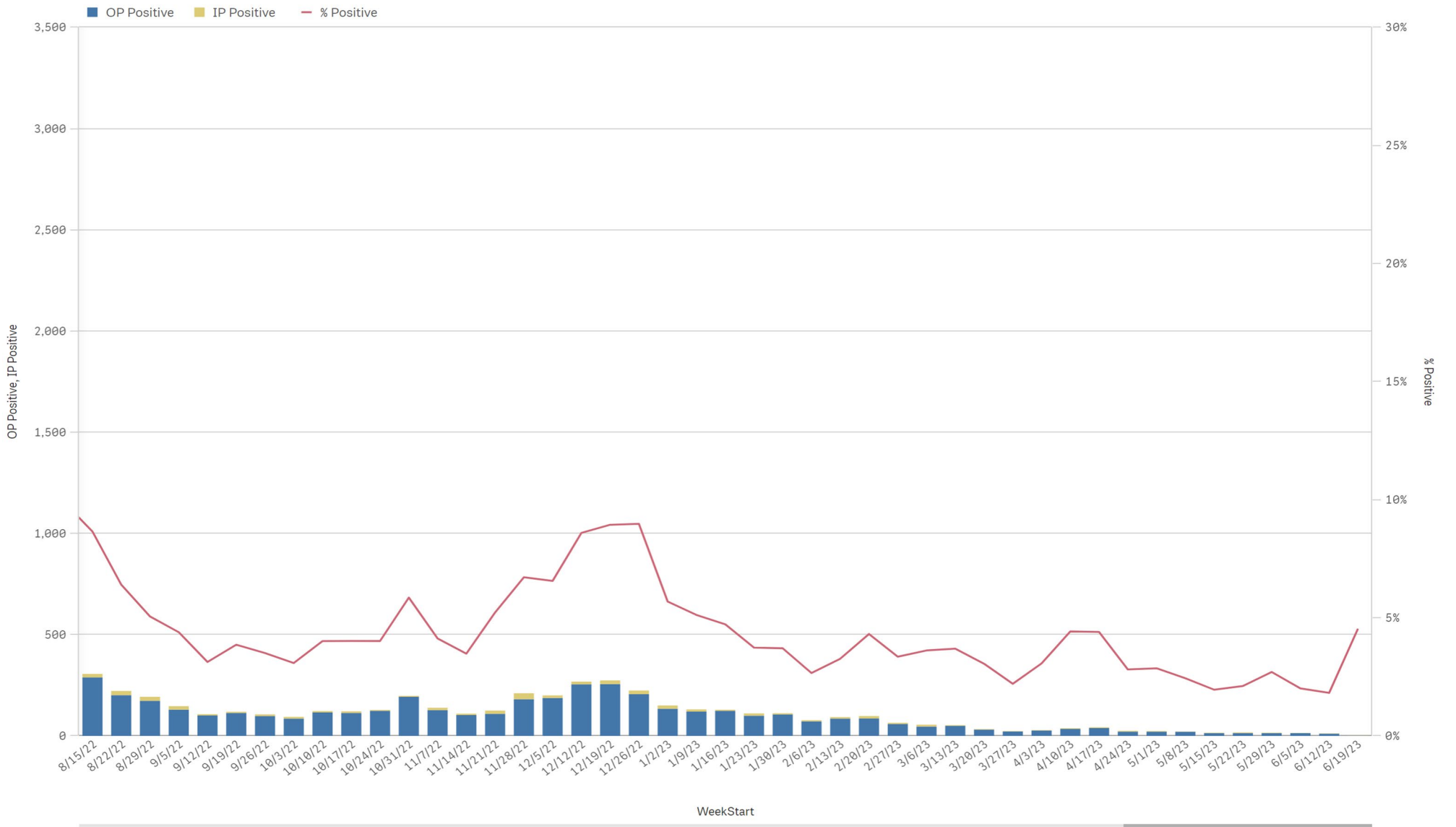
Positive SARS-CoV-2 Pathogens by Week Start - Data as of 6/19/2023



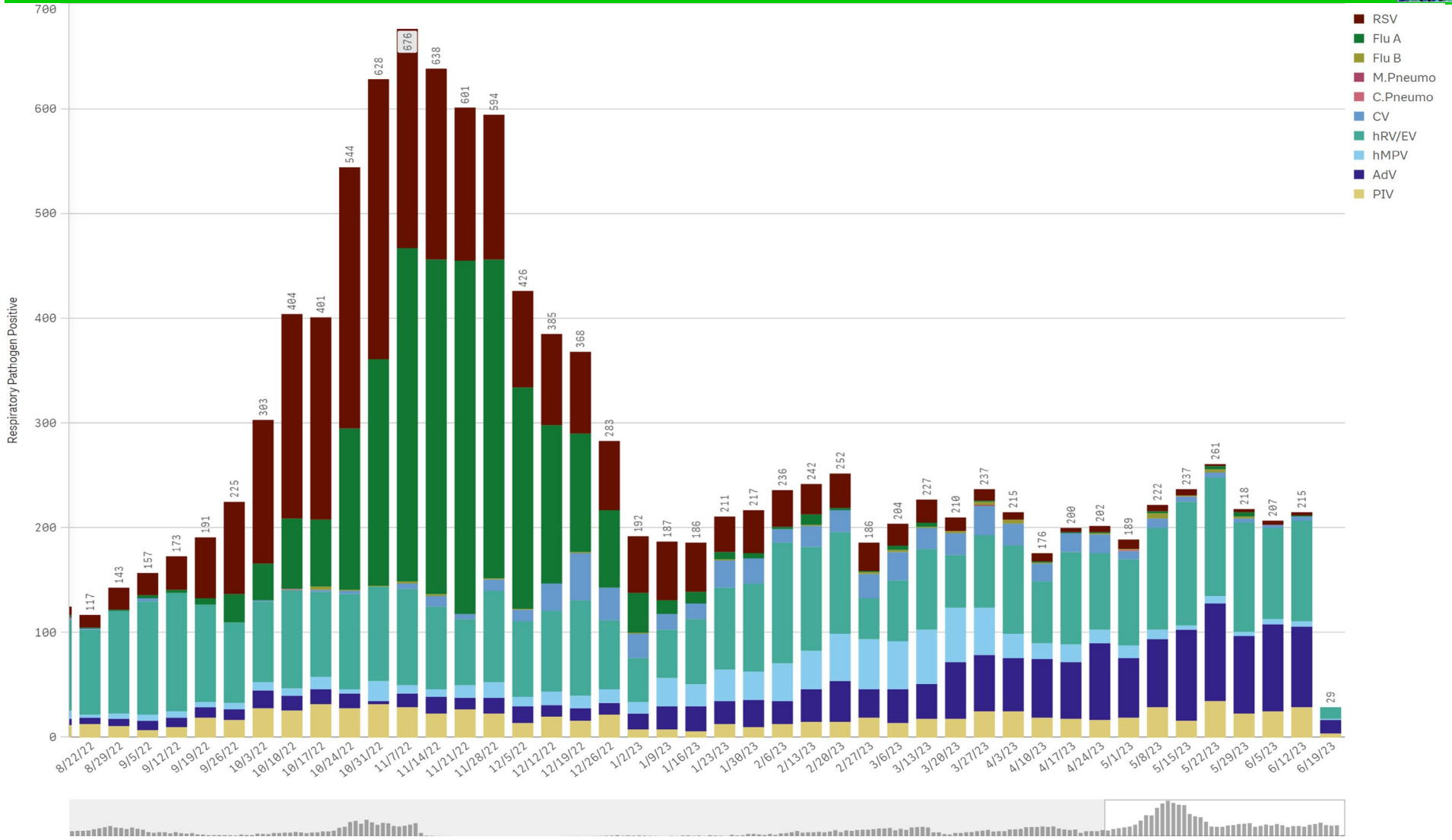
SARS-CoV-2 Positive Cases



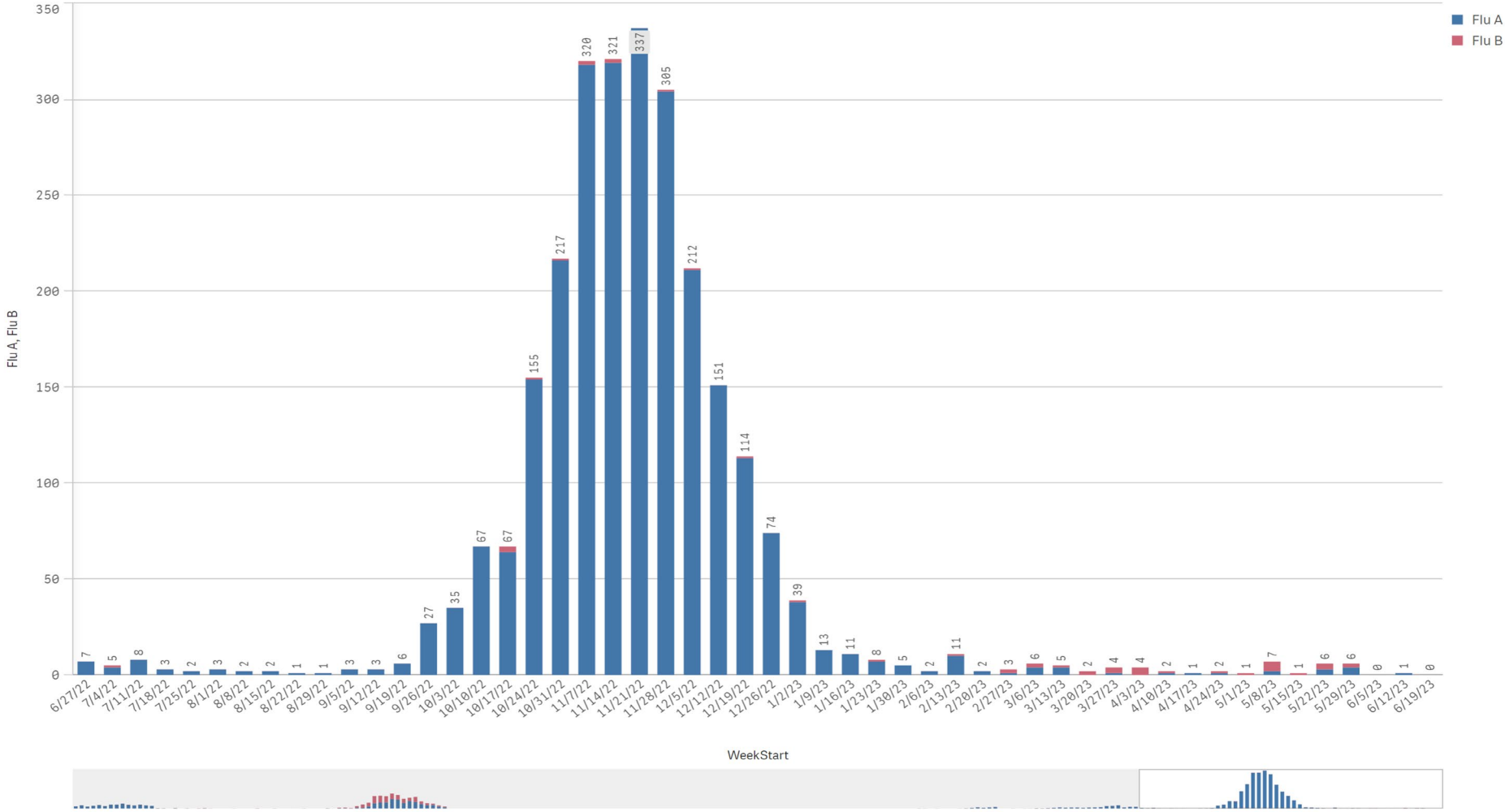
SARS-CoV-2 Positive by Encounter Type - Data as of 6/19/2023



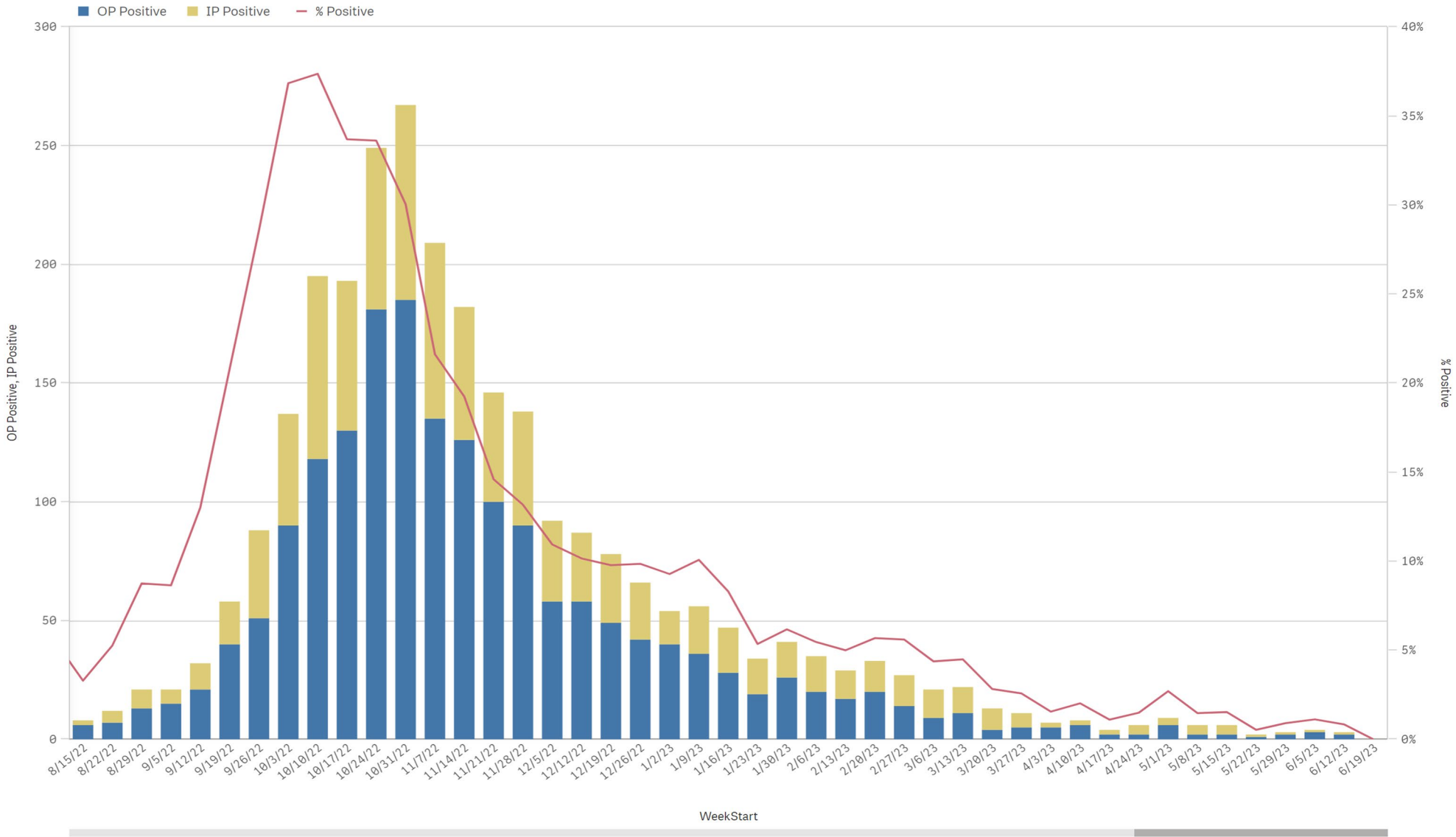
Positive Respiratory Pathogens by Week Start (excl SARS) - Data as of 6/19/2023



Influenza A & B Positive by Week Start - Data as of 6/19/2023



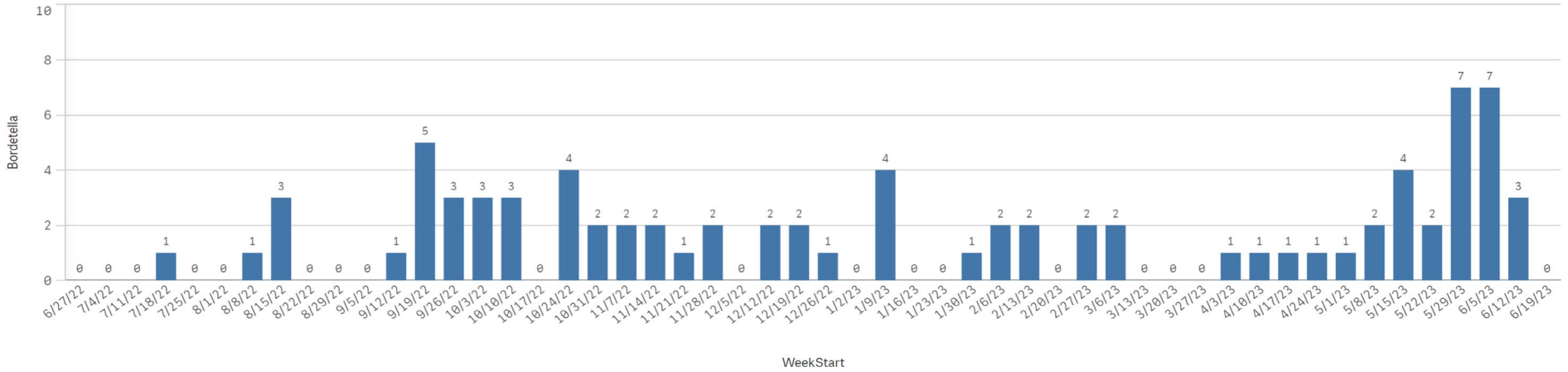
RSV - Data as of 6/19/2023



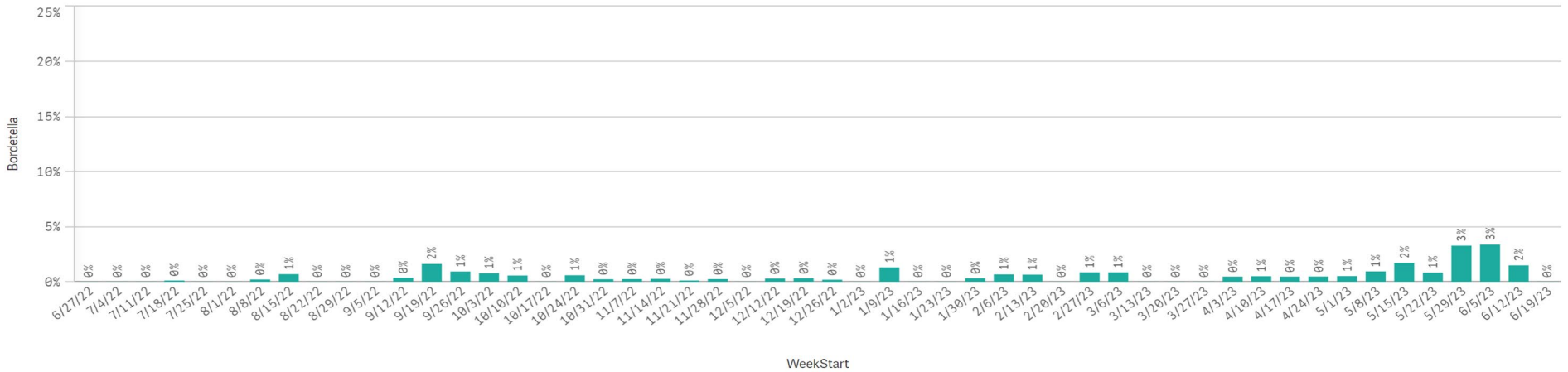
B. Pert/Parap Positives by Week Start - Data as of 6/19/2023



B. Pertussis/Parapertussis Positives by Week

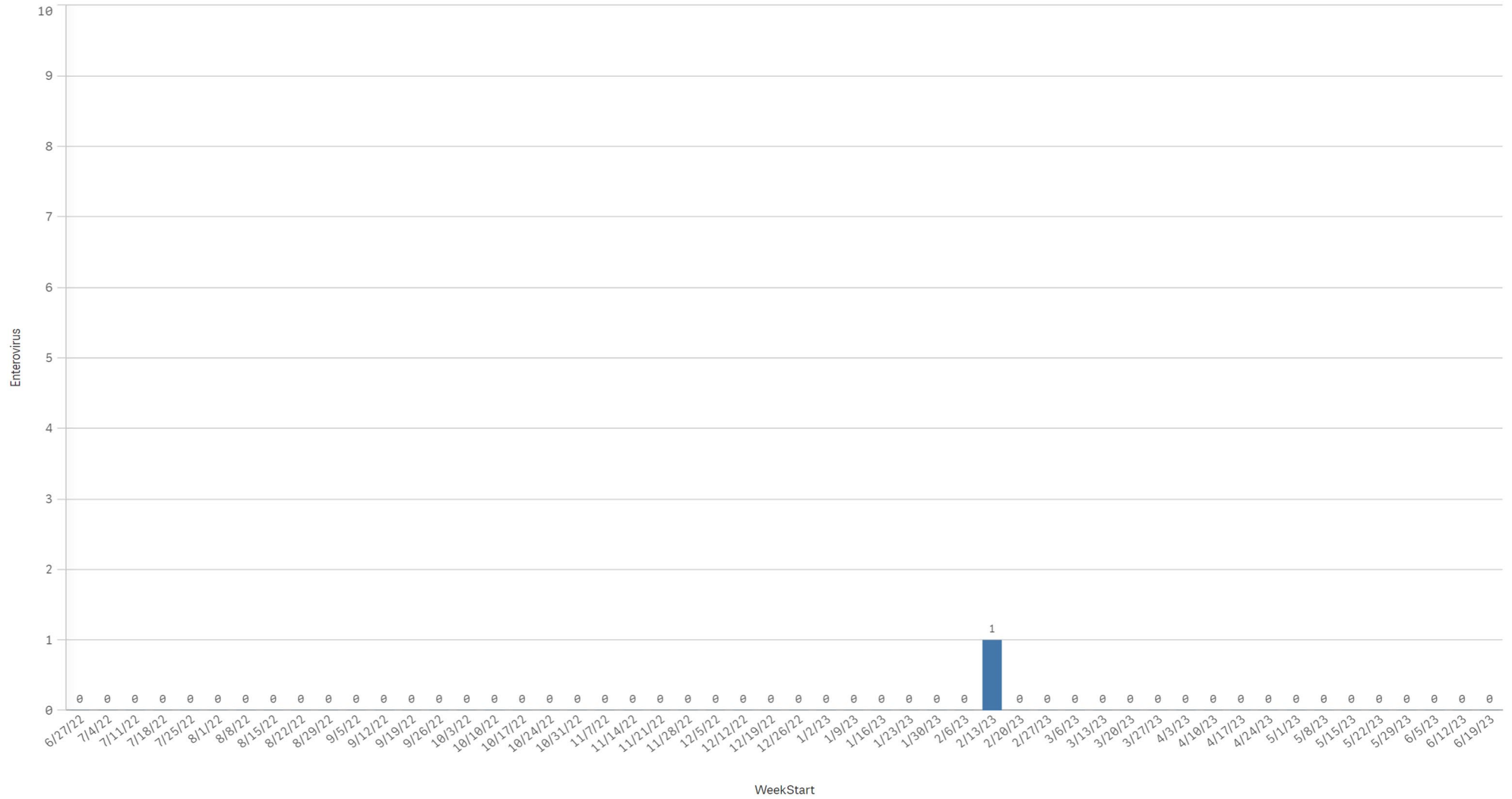


B.pertussis / B.parapertussis % Positive by Week





Enterovirus CSF Positive by Week



Enterovirus