

Volume and Positive Rate

Volume and Positive Rate - Data as of **YTD for this data starts on the first Monday in October.



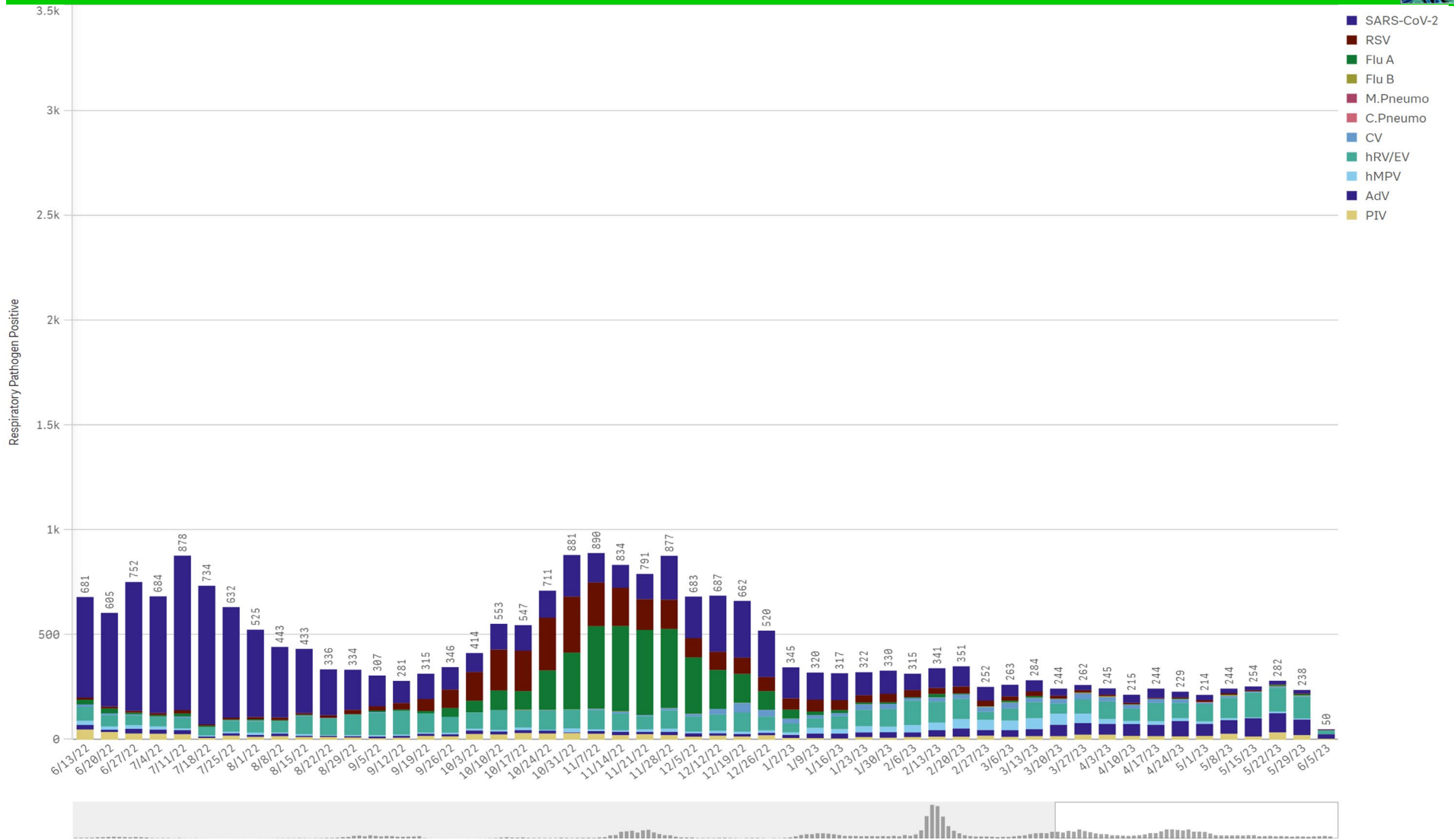
Component Group	Q	Pathogen Positive Previous Week 5/29/2023 - 6/4/2023	Pathogen Tests Previous Week 5/29/2023 - 6/4/2023	Previous Week Positive Rate	Pathogen Positive Current WTD* 6/5/2023 - 6/11/2023	Pathogen Tests Current WTD* 6/5/2023 - 6/11/2023	Current WTD** Positive Rate	Pathogen Tested YTD**	Pathogen Positive YTD**	Positive Rate YTD**
Totals		212	1,506	14.1%	45	288	15.6%	115,951	13,771	12%
Human Rhinovirus/Enterovirus		104	276	37.7%	18	54	33.3%	9,917	2,812	28%
Adenovirus		74	276	26.8%	22	54	40.7%	9,917	1,200	12%
Parainfluenza		23	276	8.3%	5	54	9.3%	9,917	708	7%
COVID-19(SARS-CoV-2,PCR)		17	626	2.7%	2	113	1.8%	77,000	3,614	5%
B.Pertussis/Parapertussis		7	21	33.3%	1	1	100.0%	925	58	6%
Coronavirus(other than COVID-19)		4	276	1.4%	1	54	1.9%	9,917	532	5%
Human Metapneumovirus		4	276	1.4%	0	54	0.0%	9,917	720	7%
Influenza A		4	331	1.2%	0	74	0.0%	20,899	2,473	12%
RSV		3	331	0.9%	2	74	2.7%	20,891	2,515	12%
Influenza B		2	331	0.6%	0	74	0.0%	20,899	43	0%
Chlamydia Pneumoniae		0	276	0.0%	0	54	0.0%	9,917	2	0%
Enterovirus,CSF		0	0	-	0	0	-	15	1	7%
Mycoplasma Pneumoniae		0	276	0.0%	0	54	0.0%	9,917	1	0%

*Current WTD may not be a completed week, depending on when the data is being reviewed. Refer to data date on page header for reference.

**YTD for this data starts on the first Monday in October.

*Current WTD may not be a complete week, depending on when data is being reviewed. Refer to data date on page header for reference.
**YTD for this data starts on the first Monday in October.

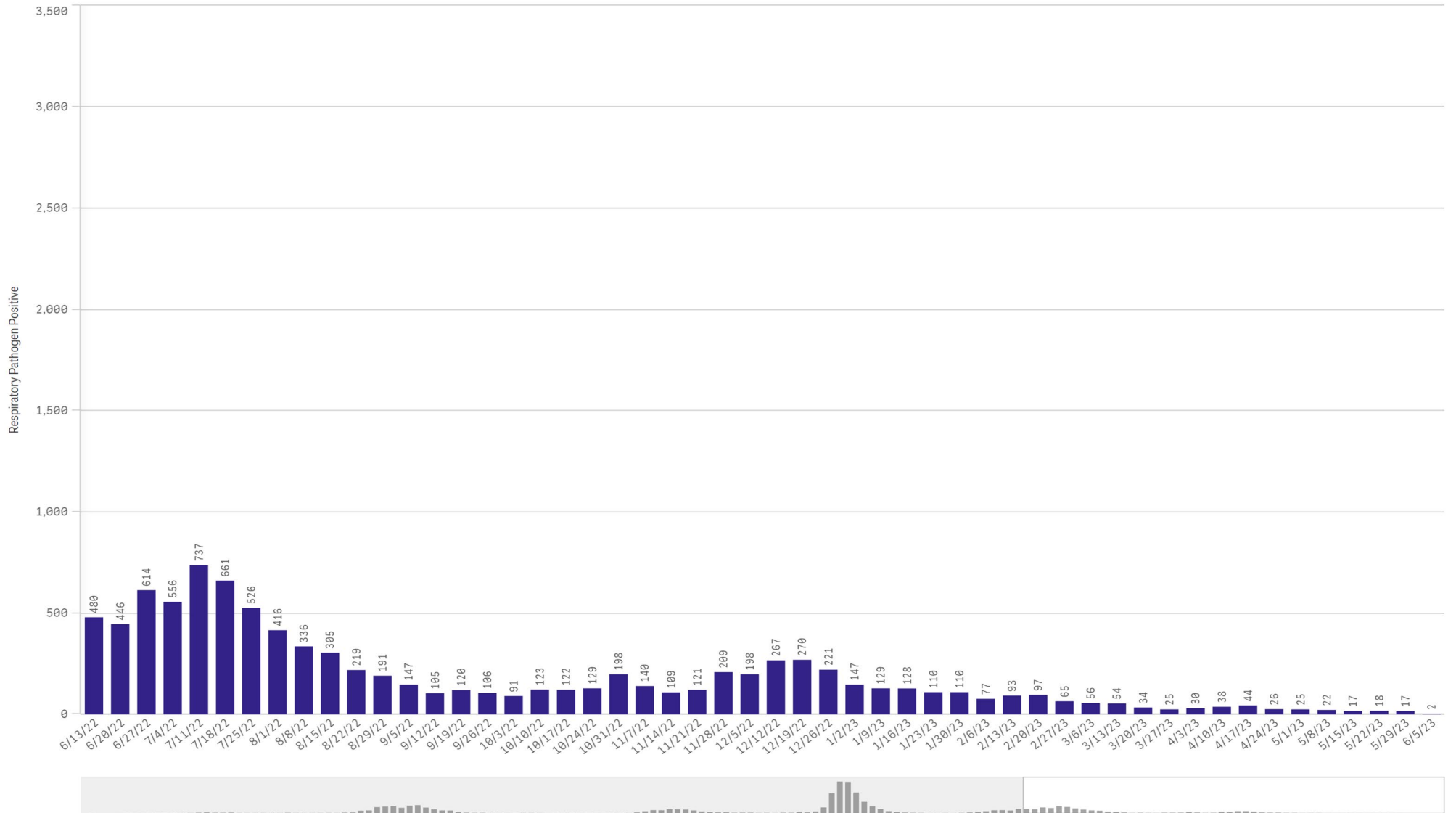
All Positive Respiratory Pathogens by Week Start - Data as of 6/5/2023



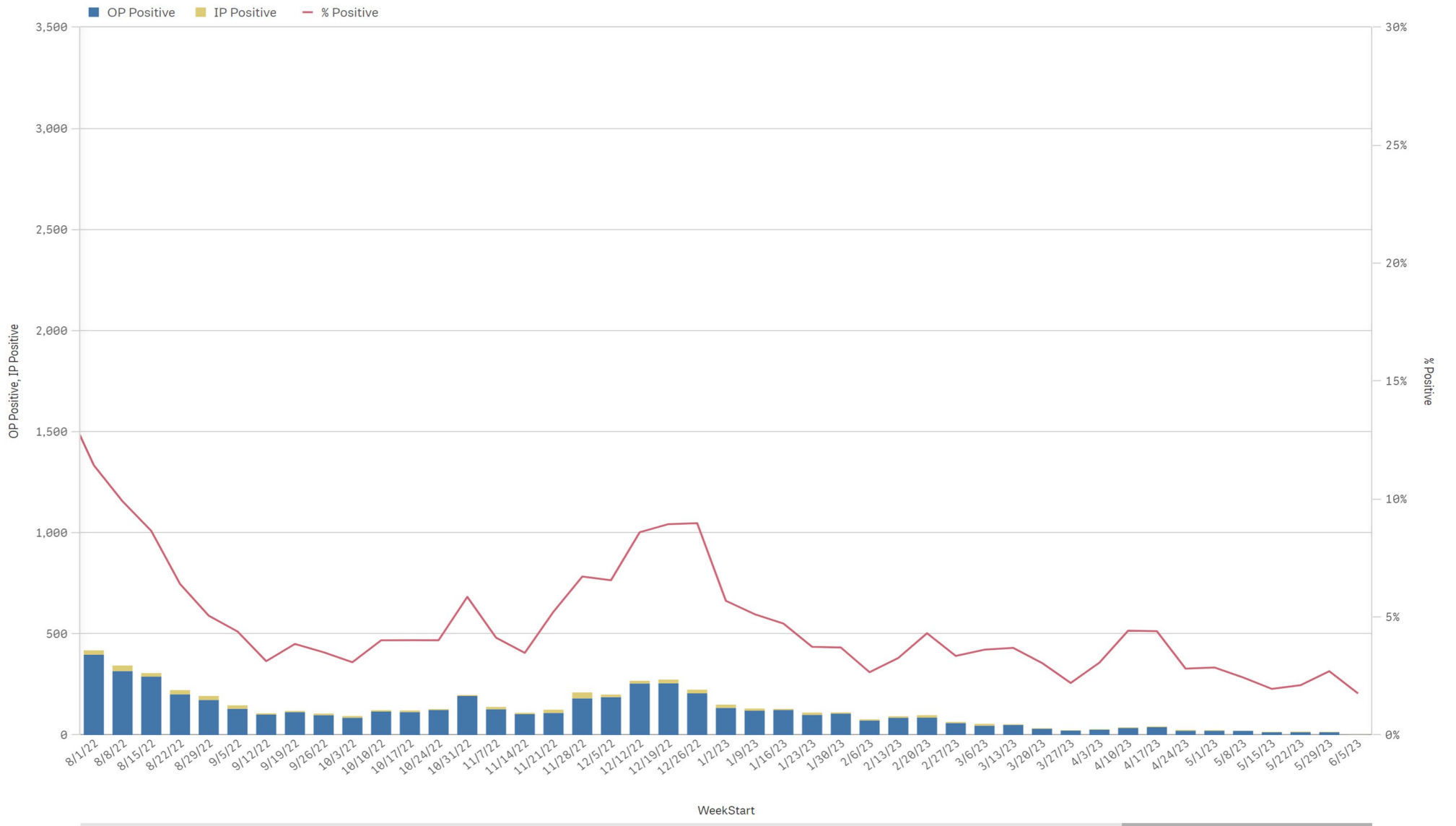
Positive SARS-CoV-2 Pathogens by Week Start - Data as of 6/5/2023



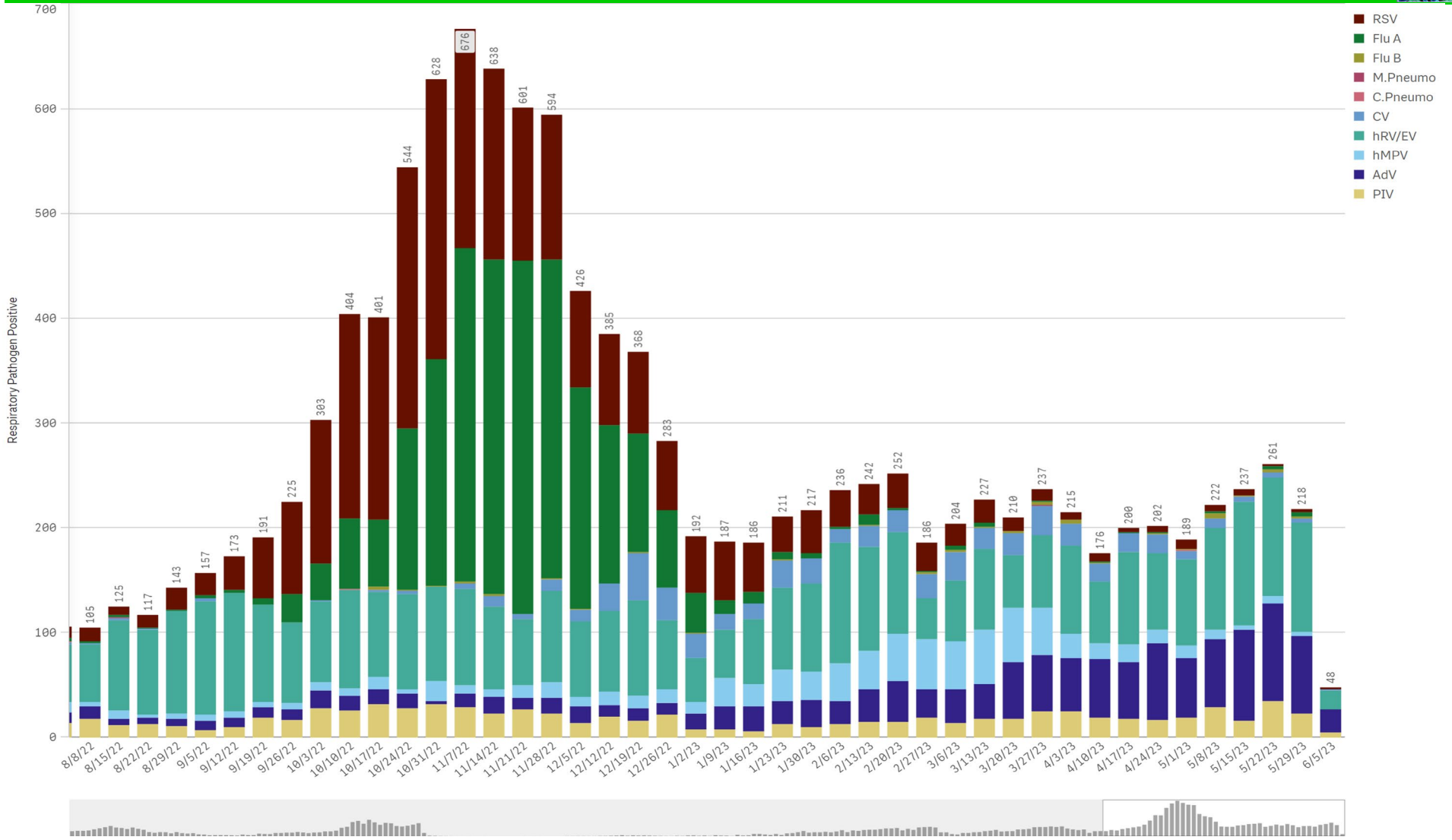
SARS-CoV-2 Positive Cases



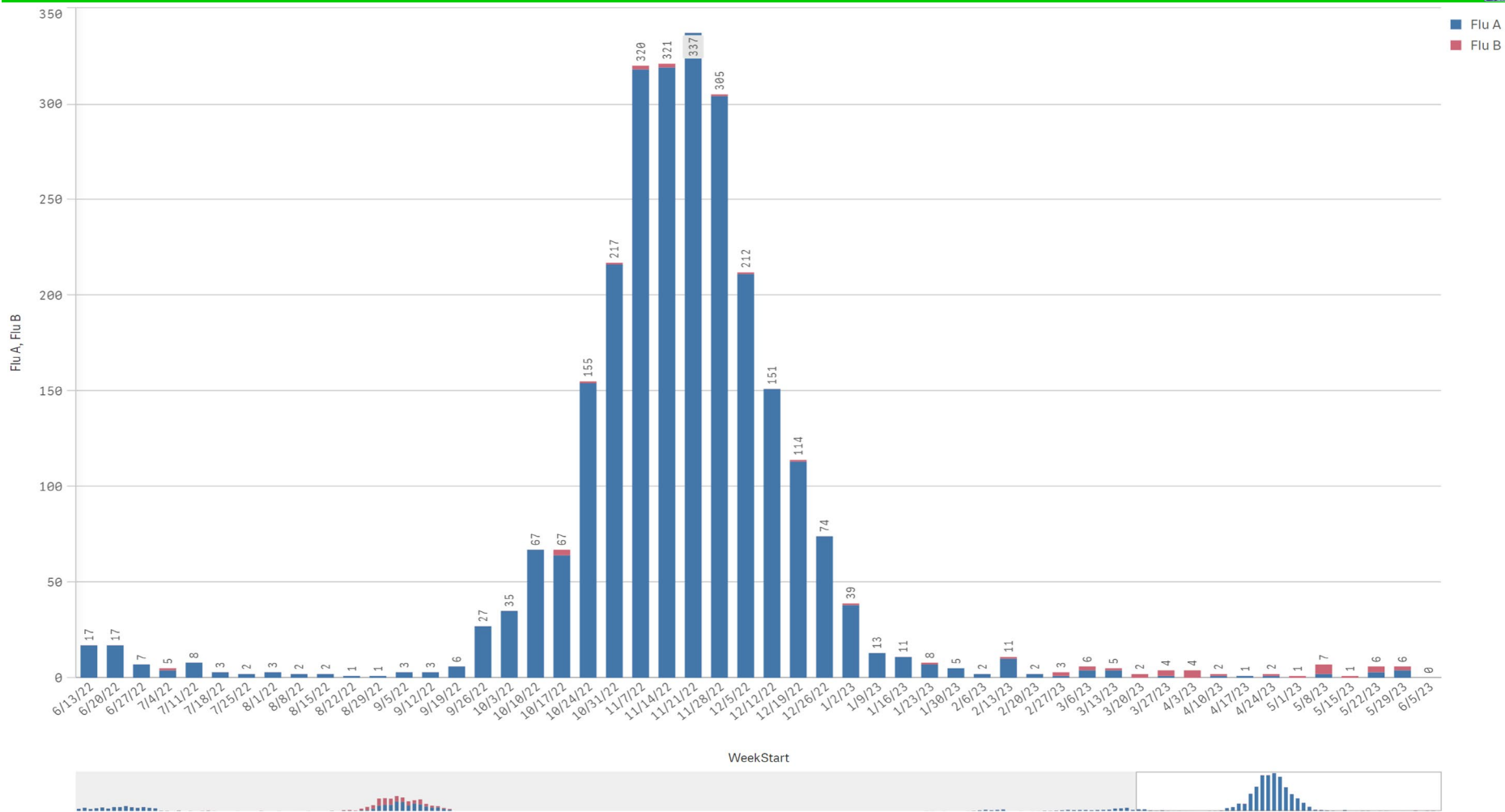
SARS-CoV-2 Positive by Encounter Type - Data as of 6/5/2023



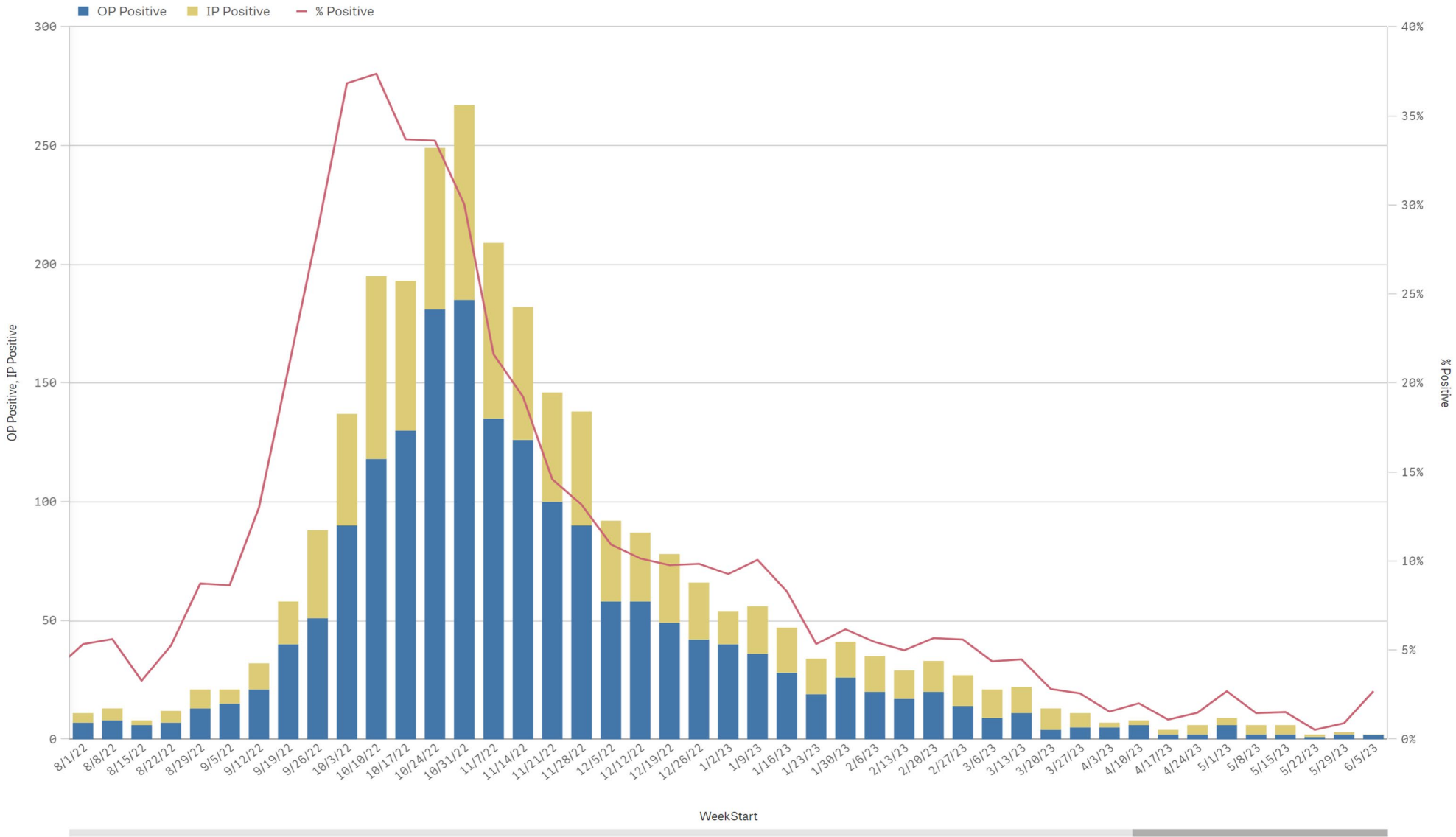
Positive Respiratory Pathogens by Week Start (excl SARS) - Data as of 6/5/2023



Influenza A & B Positive by Week Start - Data as of 6/5/2023



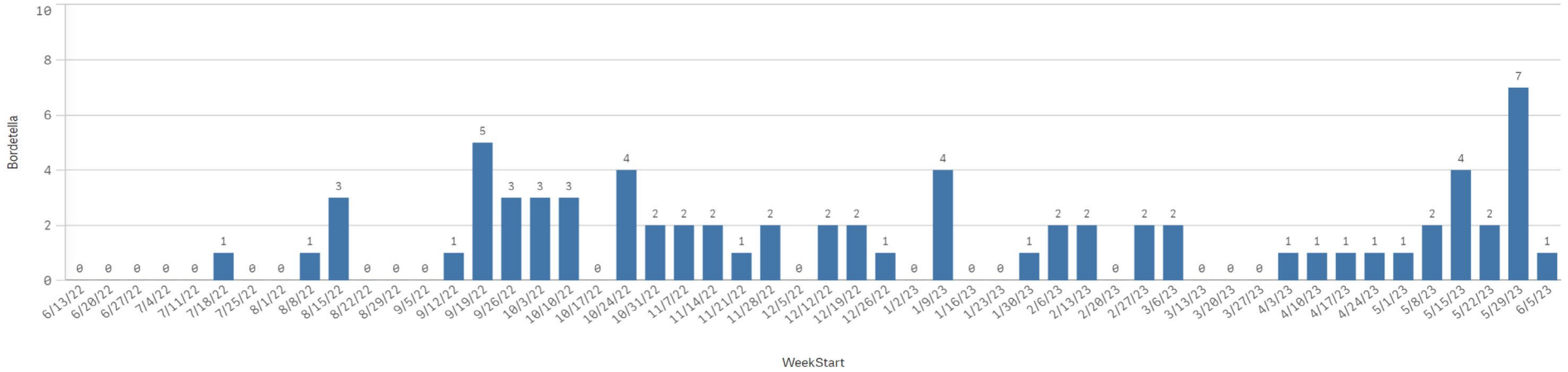
RSV - Data as of 6/5/2023



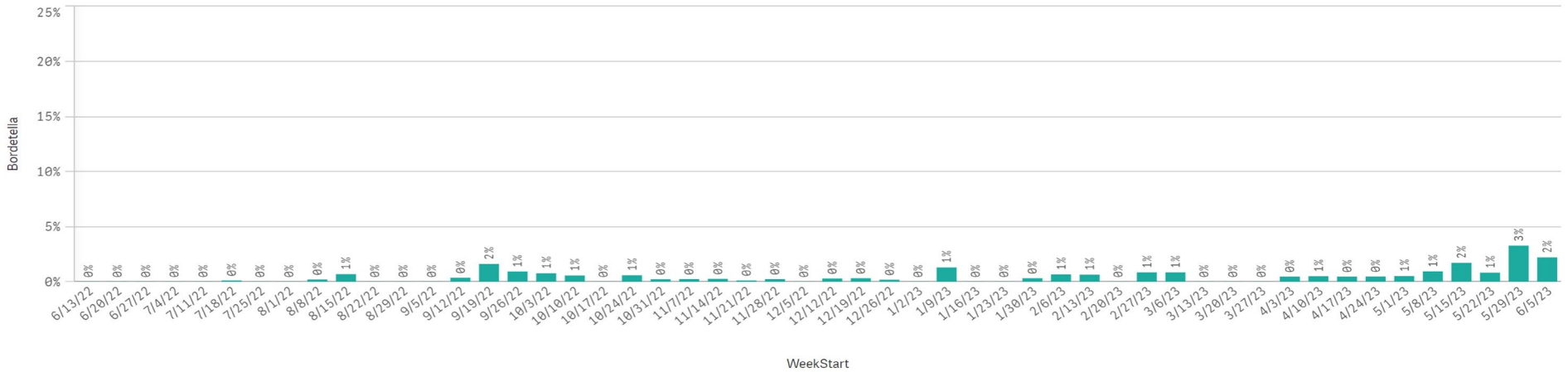
B. Pert/Parap Positives by Week Start - Data as of 6/5/2023



B. Pertussis/Parapertussis Positives by Week



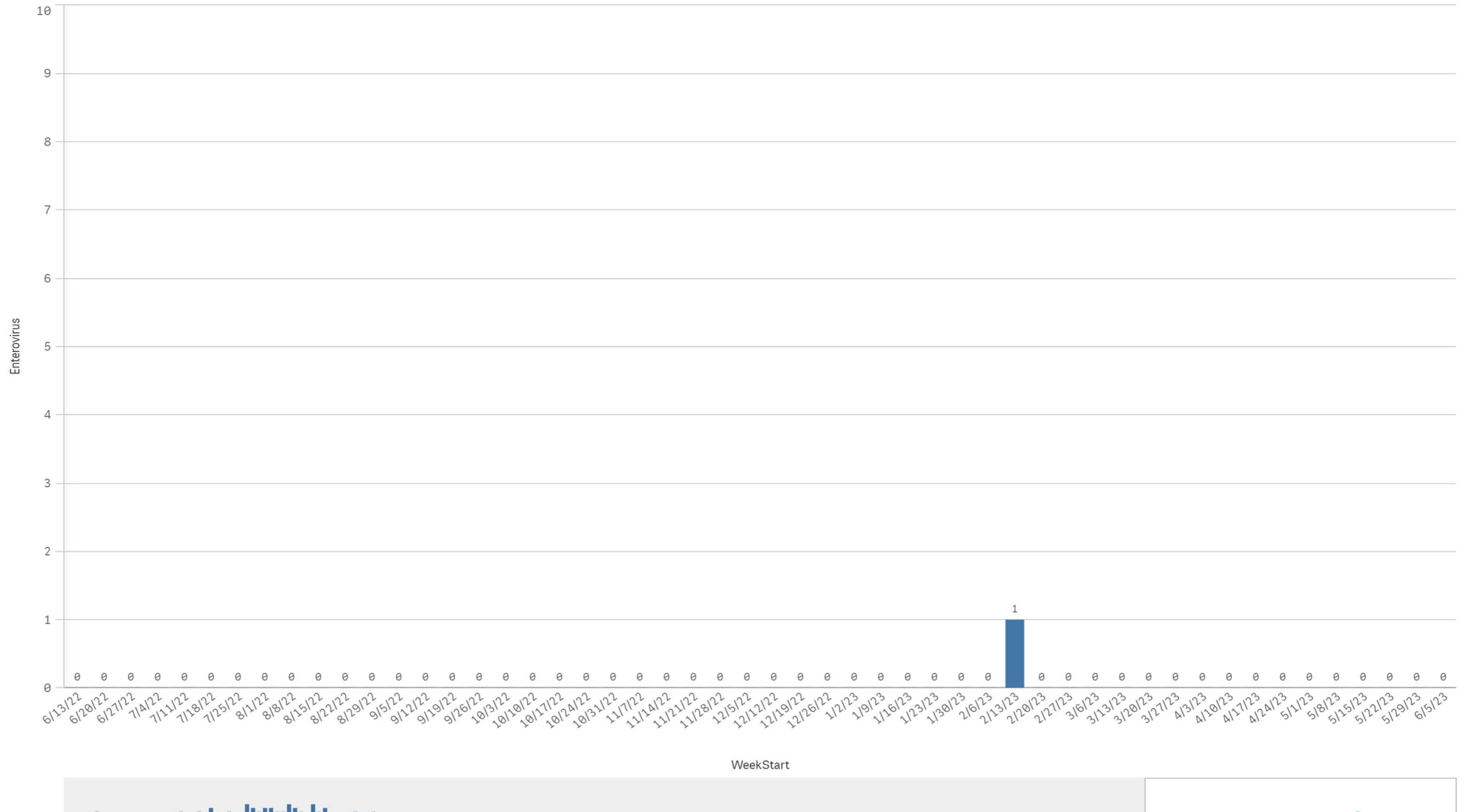
B.pertussis / B.parapertussis % Positive by Week



Enterovirus by Week Start - Data as of 6/5/2023



Enterovirus CSF Positive by Week



Enterovirus