

Volume and Positive Rate

Volume and Positive Rate - Data as of **YTD for this data starts on the first Monday in October.



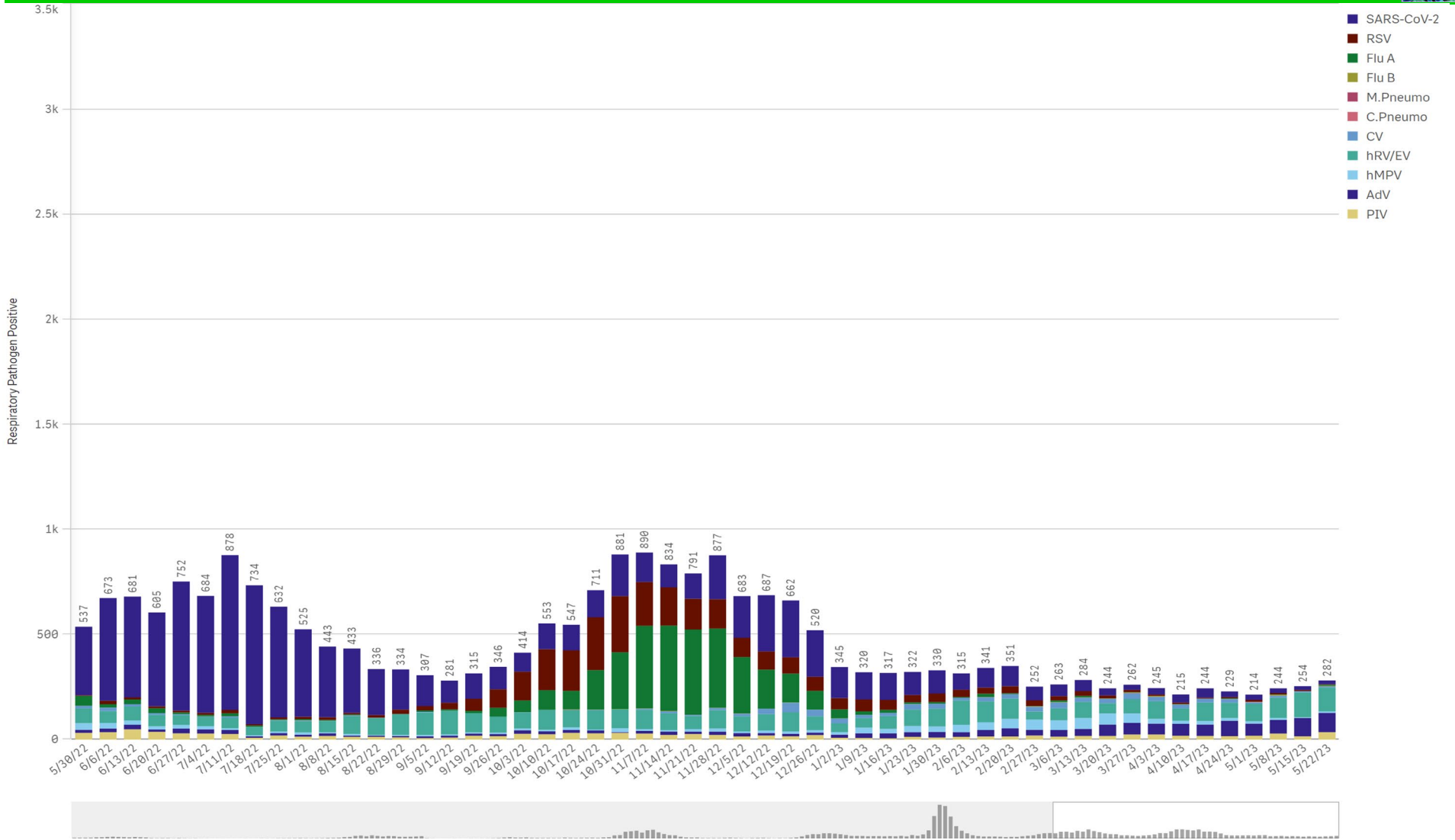
Component Group	Q	Pathogen Positive Previous Week 5/15/2023 - 5/21/2023	Pathogen Tests Previous Week 5/15/2023 - 5/21/2023	Previous Week Positive Rate	Pathogen Positive Current WTD* 5/22/2023 - 5/28/2023	Pathogen Tests Current WTD* 5/22/2023 - 5/28/2023	Current WTD** Positive Rate	Pathogen Tested YTD**	Pathogen Positive YTD**	Positive Rate YTD**
Totals		232	1,879	12.3%	240	1,880	12.8%	114,157	13,514	12%
Human Rhinovirus/Enterovirus		118	316	37.3%	113	323	35.0%	9,587	2,690	28%
Adenovirus		87	316	27.5%	93	323	28.8%	9,587	1,104	12%
COVID-19(SARS-CoV-2,PCR)		17	865	2.0%	18	848	2.1%	76,261	3,595	5%
Parainfluenza		16	316	5.1%	35	323	10.8%	9,587	680	7%
RSV		6	392	1.5%	2	375	0.5%	20,486	2,510	12%
Coronavirus(other than COVID-19)		5	316	1.6%	5	323	1.5%	9,587	527	5%
B.Pertussis/Parapertussis		4	21	19.0%	2	23	8.7%	903	50	6%
Human Metapneumovirus		4	316	1.3%	7	323	2.2%	9,587	716	7%
Influenza B		1	392	0.3%	3	375	0.8%	20,494	41	0%
Chlamydia Pneumoniae		0	316	0.0%	0	323	0.0%	9,587	2	0%
Enterovirus,CSF		0	0	-	0	1	0.0%	15	1	7%
Influenza A		0	392	0.0%	3	375	0.8%	20,494	2,469	12%
Mycoplasma Pneumoniae		0	316	0.0%	0	323	0.0%	9,587	1	0%

*Current WTD may not be a completed week, depending on when the data is being reviewed. Refer to data date on page header for reference.

**YTD for this data starts on the first Monday in October.

*Current WTD may not be a complete week, depending on when data is being reviewed. Refer to data date on page header for reference.
**YTD for this data starts on the first Monday in October.

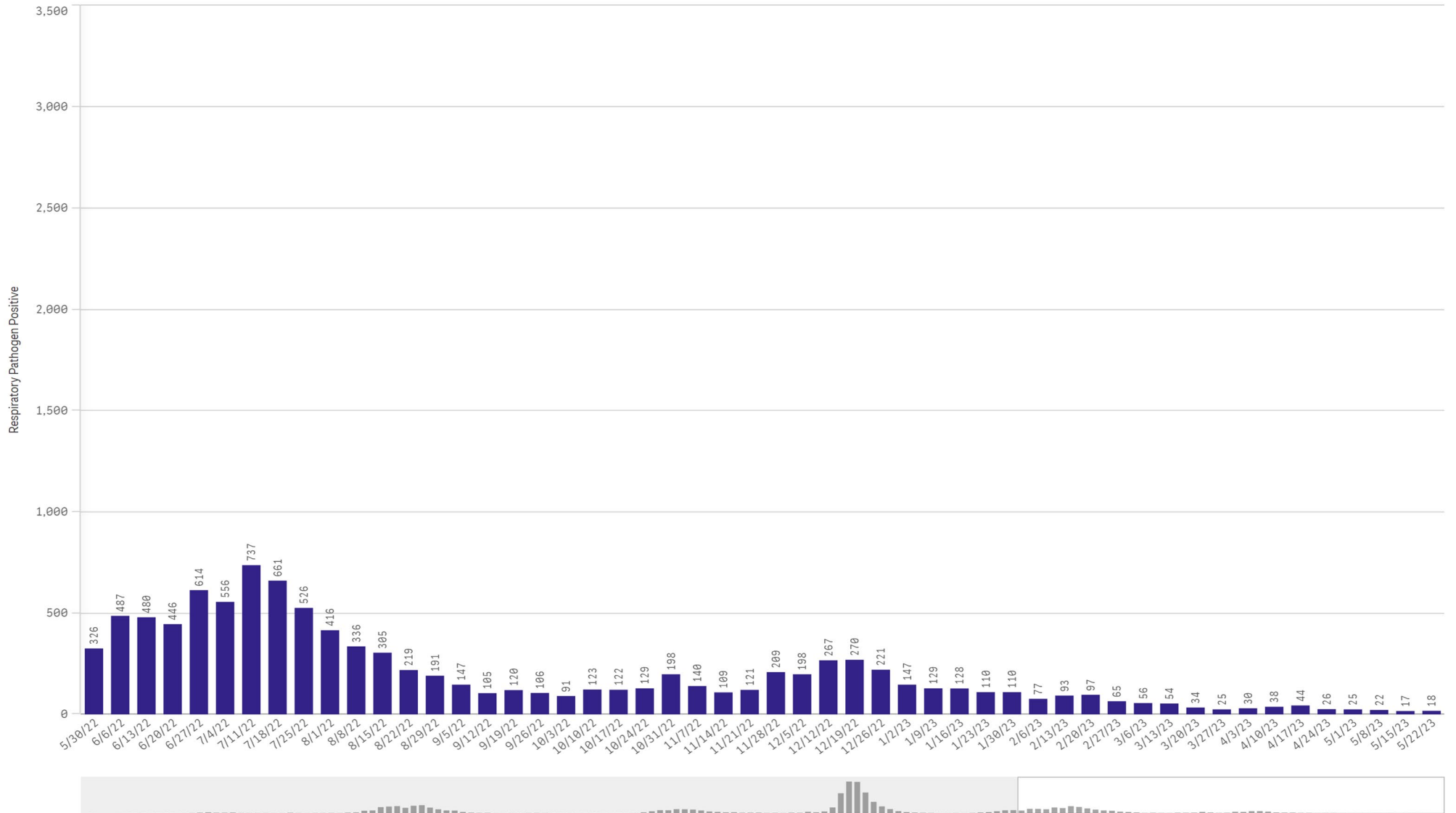
All Positive Respiratory Pathogens by Week Start - Data as of 5/28/2023



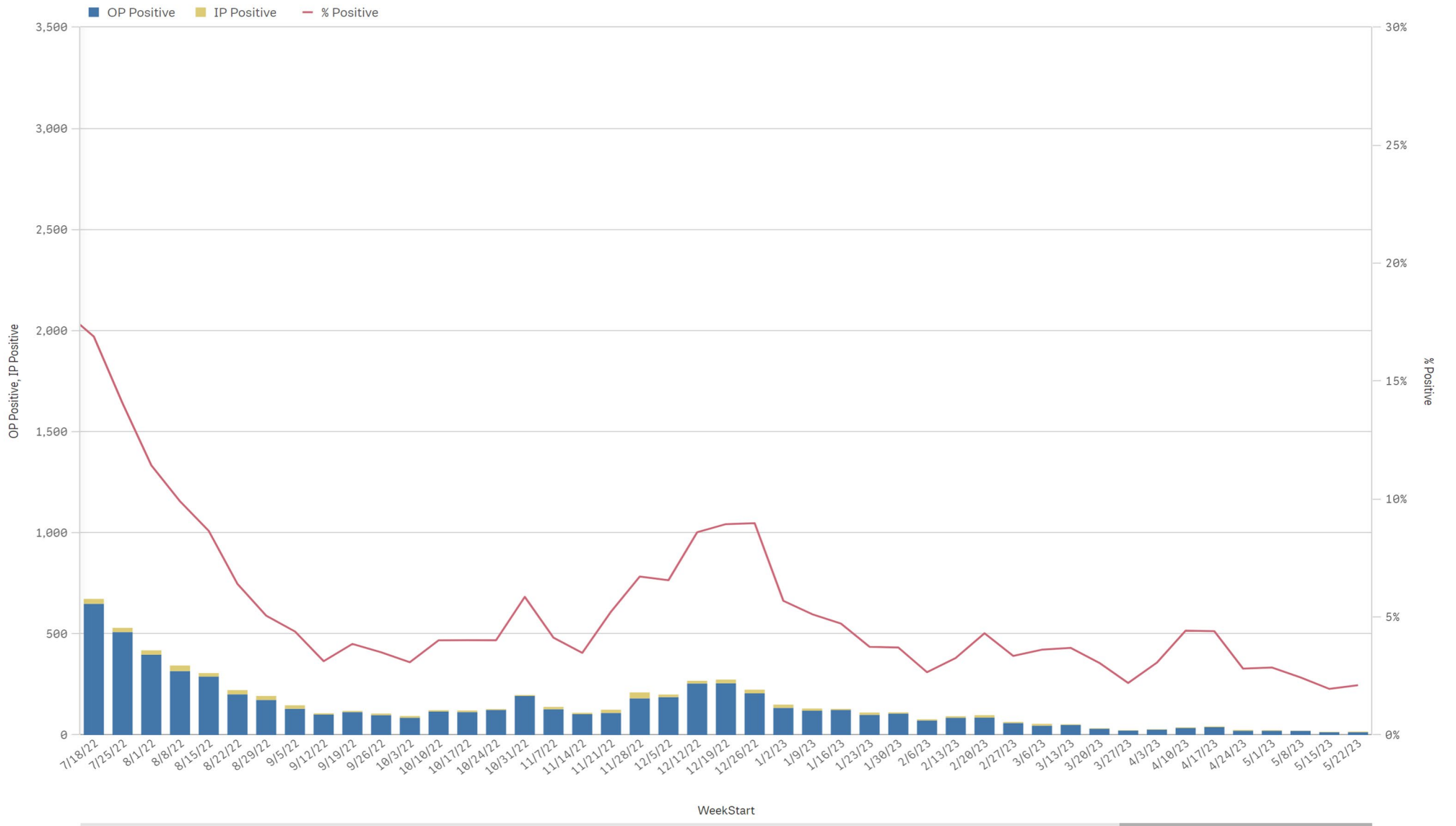
Positive SARS-CoV-2 Pathogens by Week Start - Data as of 5/28/2023



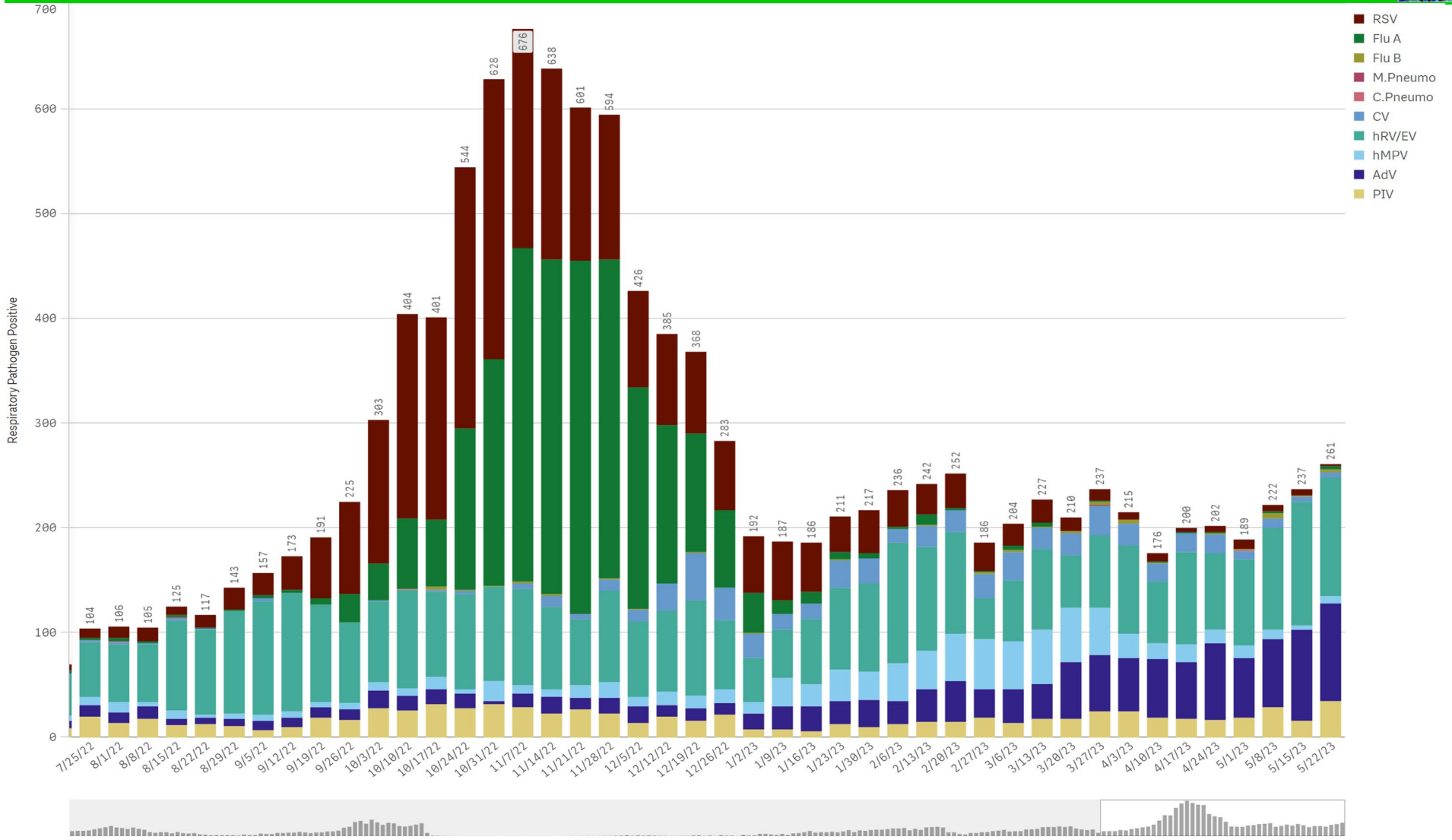
SARS-CoV-2 Positive Cases



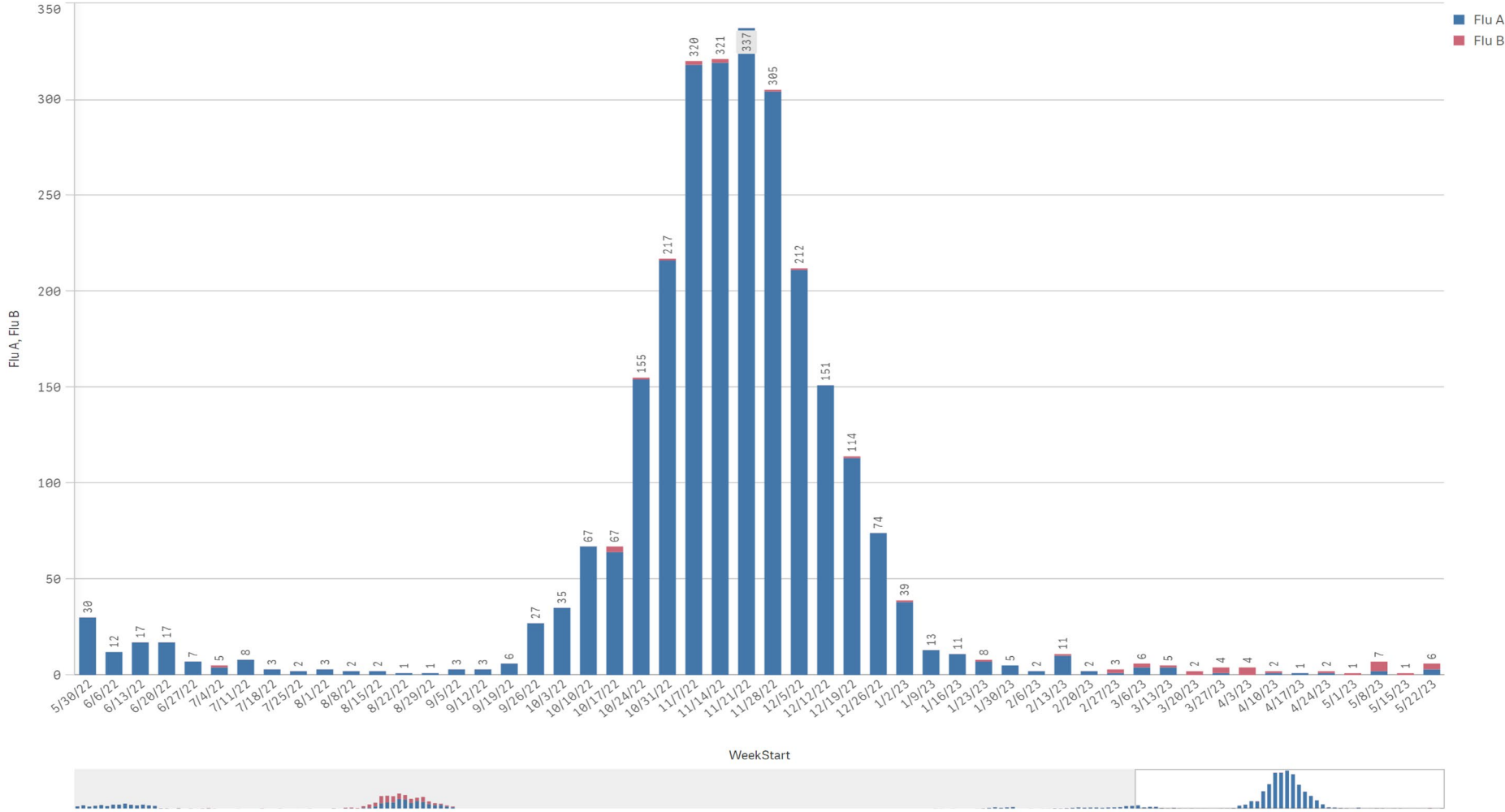
SARS-CoV-2 Positive by Encounter Type - Data as of 5/28/2023



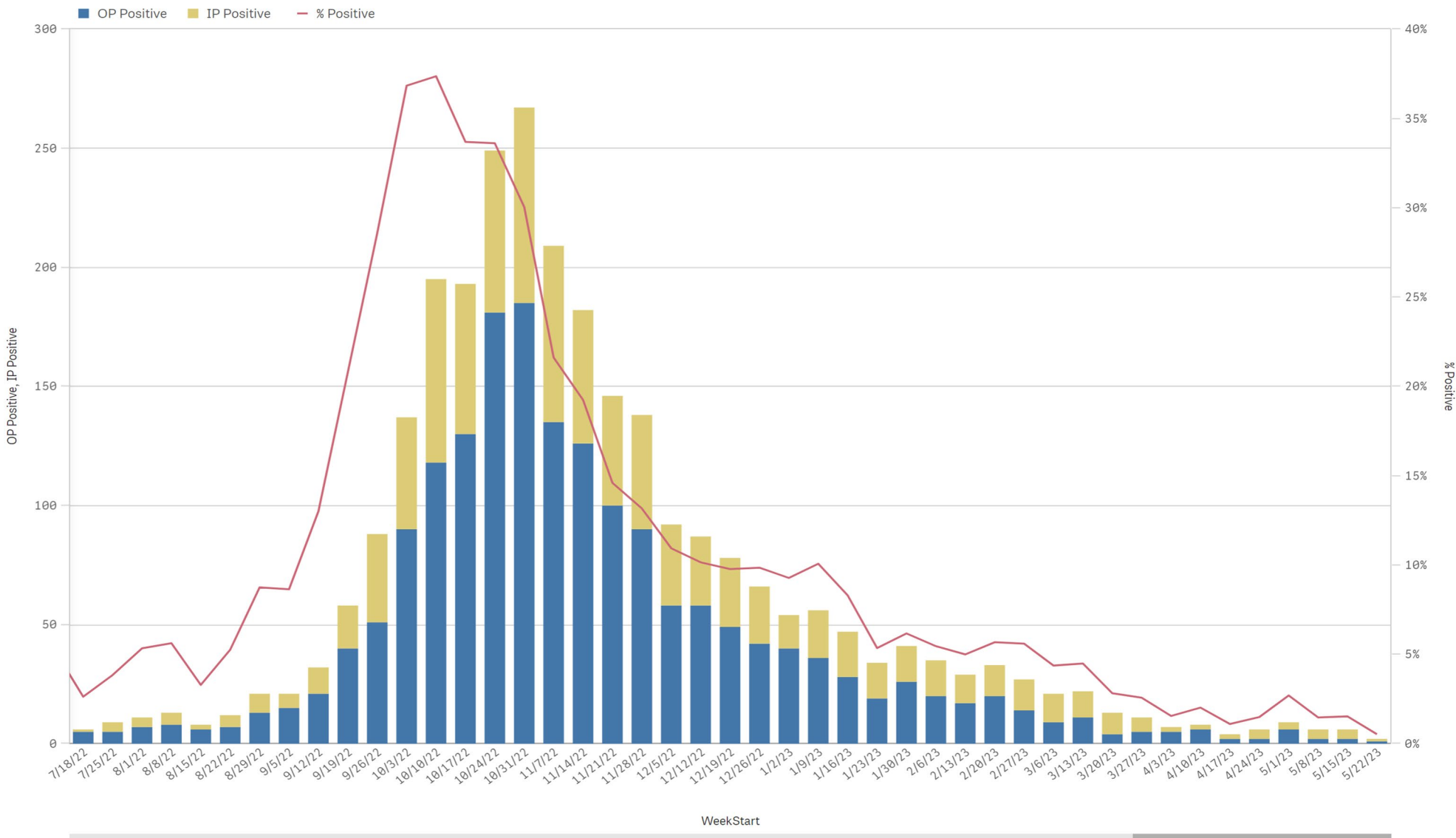
Positive Respiratory Pathogens by Week Start (excl SARS) - Data as of 5/28/2023



Influenza A & B Positive by Week Start - Data as of 5/28/2023



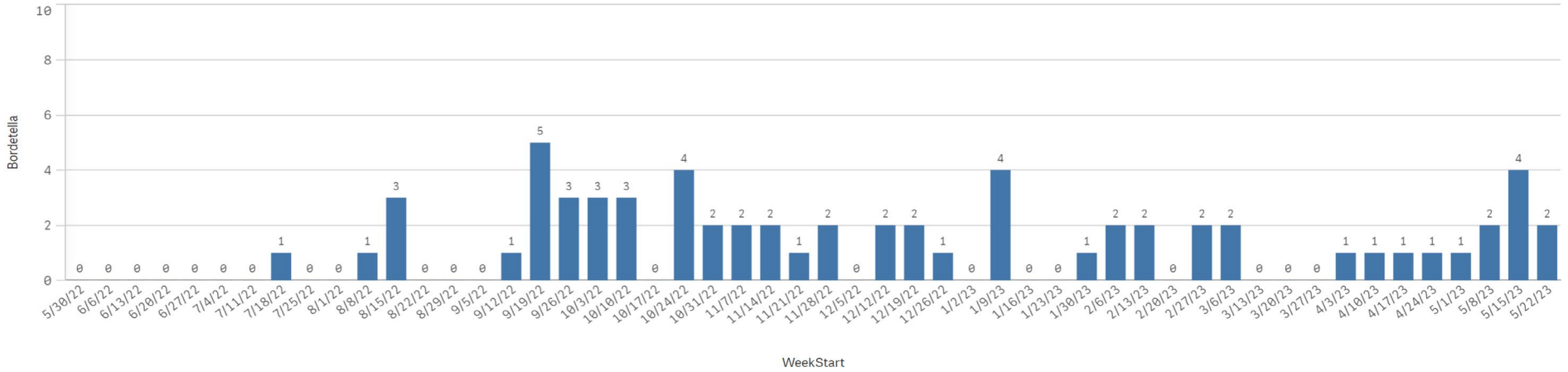
RSV - Data as of 5/28/2023



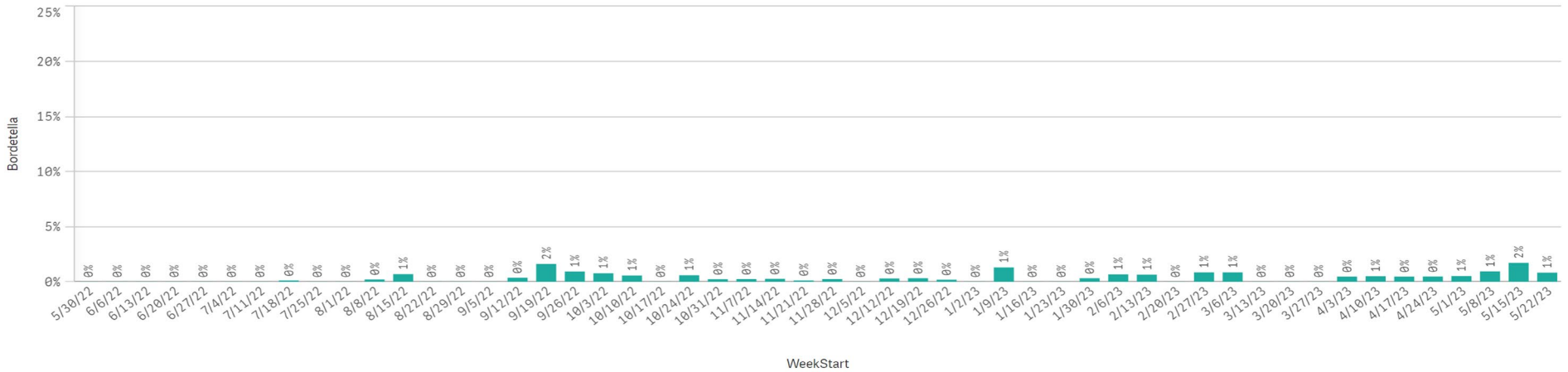
B. Pert/Parap Positives by Week Start - Data as of 5/28/2023



B. Pertussis/Parapertussis Positives by Week



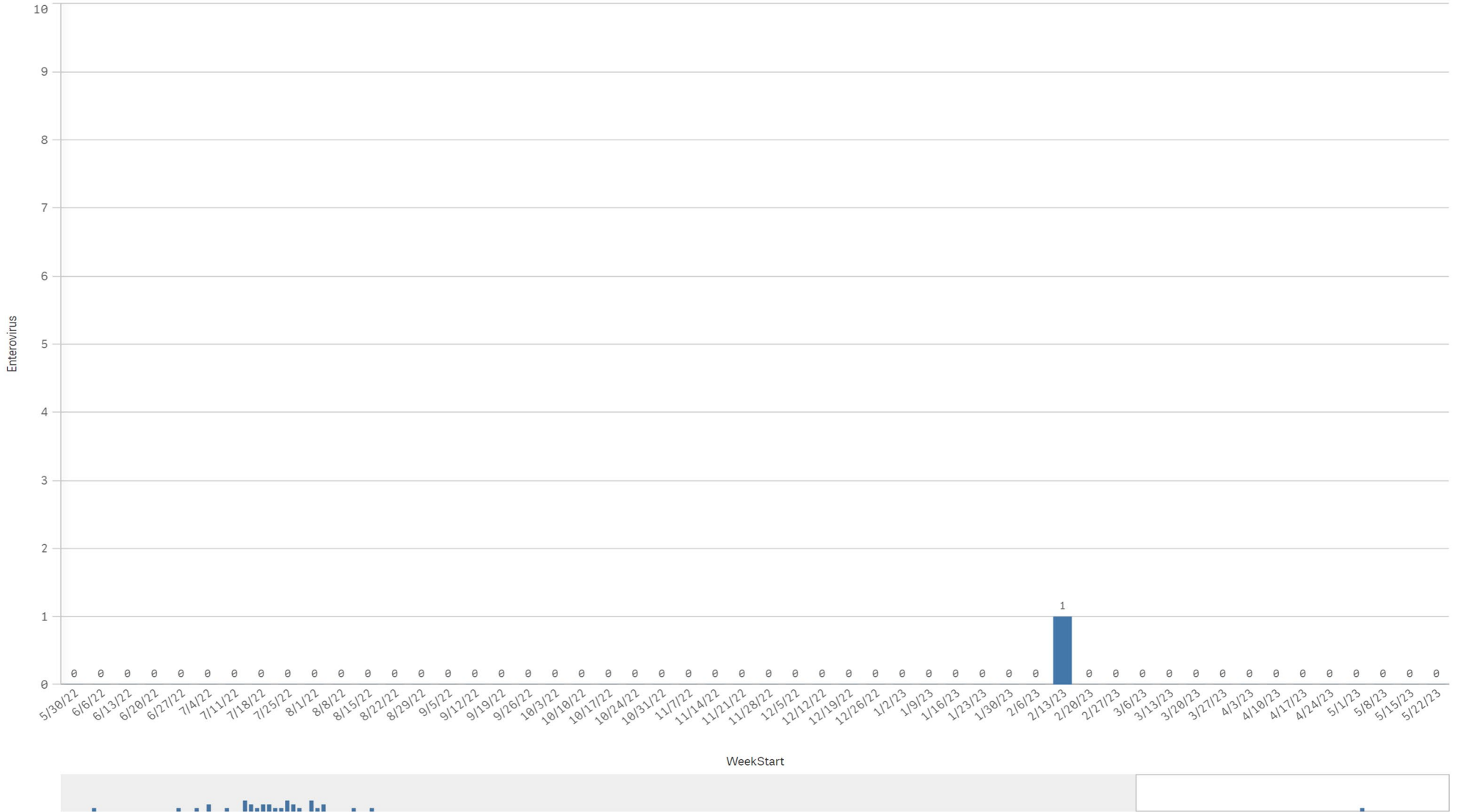
B.pertussis / B.parapertussis % Positive by Week



Enterovirus by Week Start - Data as of 5/28/2023



Enterovirus CSF Positive by Week



Enterovirus