

Volume and Positive Rate

Volume and Positive Rate - Data as of \*\*YTD for this data starts on the first Monday in October.



Component Group	Q	Pathogen Positive Previous Week 5/8/2023 - 5/14/2023	Pathogen Tests Previous Week 5/8/2023 - 5/14/2023	Previous Week Positive Rate	Pathogen Positive Current WTD* 5/15/2023 - 5/21/2023	Pathogen Tests Current WTD* 5/15/2023 - 5/21/2023	Current WTD** Positive Rate	Pathogen Tested YTD**	Pathogen Positive YTD**	Positive Rate YTD**
<b>Totals</b>		<b>212</b>	<b>1,847</b>	<b>11.5%</b>	<b>232</b>	<b>1,879</b>	<b>12.3%</b>	<b>112,277</b>	<b>13,274</b>	<b>12%</b>
Human Rhinovirus/Enterovirus		97	288	33.7%	118	316	37.3%	9,264	2,577	28%
Adenovirus		65	288	22.6%	87	316	27.5%	9,264	1,011	11%
Parainfluenza		29	288	10.1%	16	316	5.1%	9,264	645	7%
COVID-19(SARS-CoV-2,PCR)		22	898	2.4%	17	865	2.0%	75,413	3,577	5%
Coronavirus(other than COVID-19)		9	288	3.1%	5	316	1.6%	9,264	522	6%
Human Metapneumovirus		9	288	3.1%	4	316	1.3%	9,264	709	8%
RSV		6	408	1.5%	6	392	1.5%	20,111	2,508	12%
Influenza B		5	408	1.2%	1	392	0.3%	20,119	38	0%
B.Pertussis/Parapertussis		2	18	11.1%	4	21	19.0%	880	48	5%
Influenza A		2	408	0.5%	0	392	0.0%	20,119	2,466	12%
Chlamydia Pneumoniae		0	288	0.0%	0	316	0.0%	9,264	2	0%
Enterovirus,CSF		0	0	-	0	0	-	14	1	7%
Mycoplasma Pneumoniae		0	288	0.0%	0	316	0.0%	9,264	1	0%

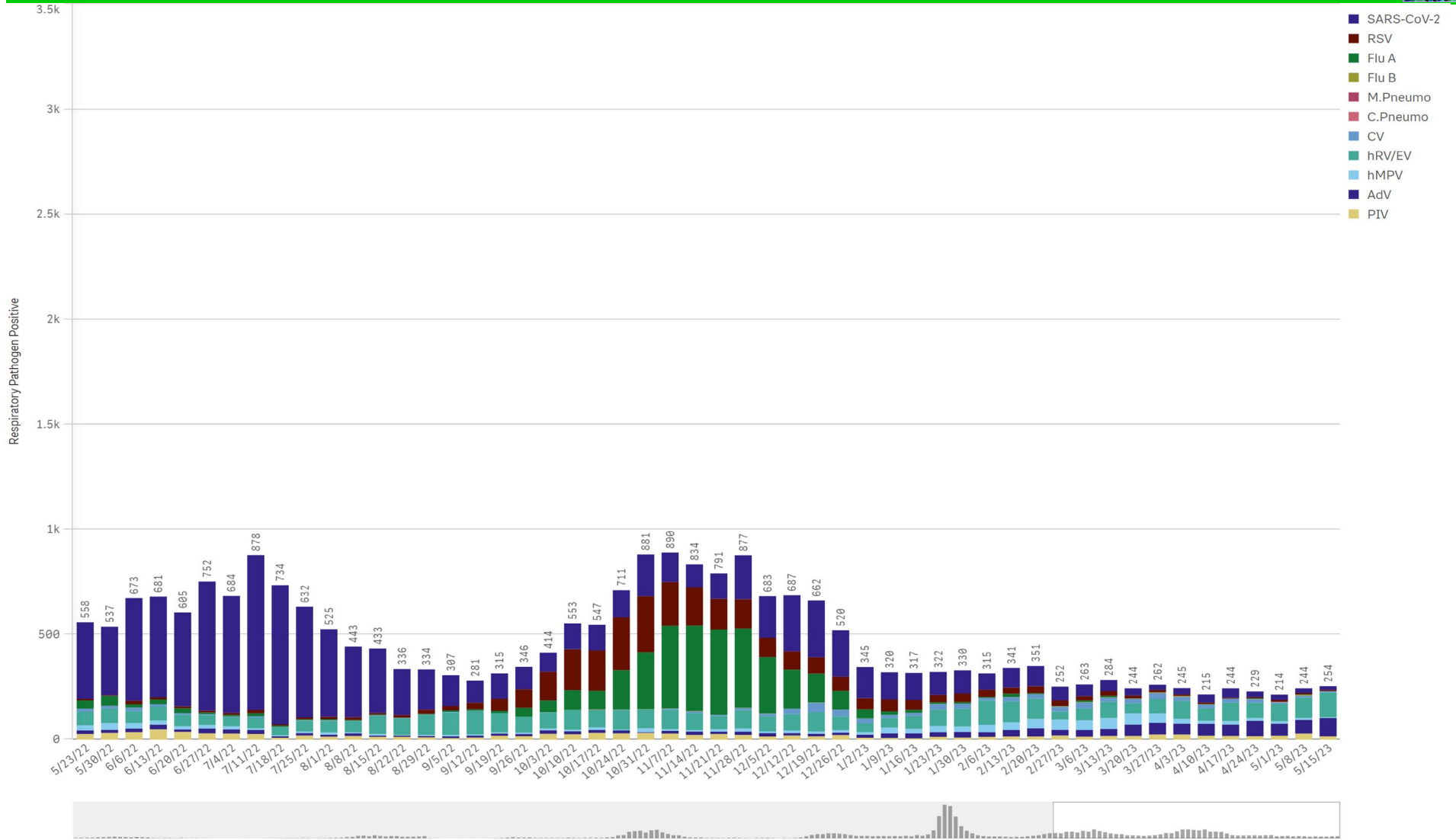
\*Current WTD may not be a completed week, depending on when the data is being reviewed. Refer to data date on page header for reference.

\*\*YTD for this data starts on the first Monday in October.

\*Current WTD may not be a complete week, depending on when data is being reviewed. Refer to data date on page header for reference.  
\*\*YTD for this data starts on the first Monday in October.

Positive Respiratory Pathogens by Week

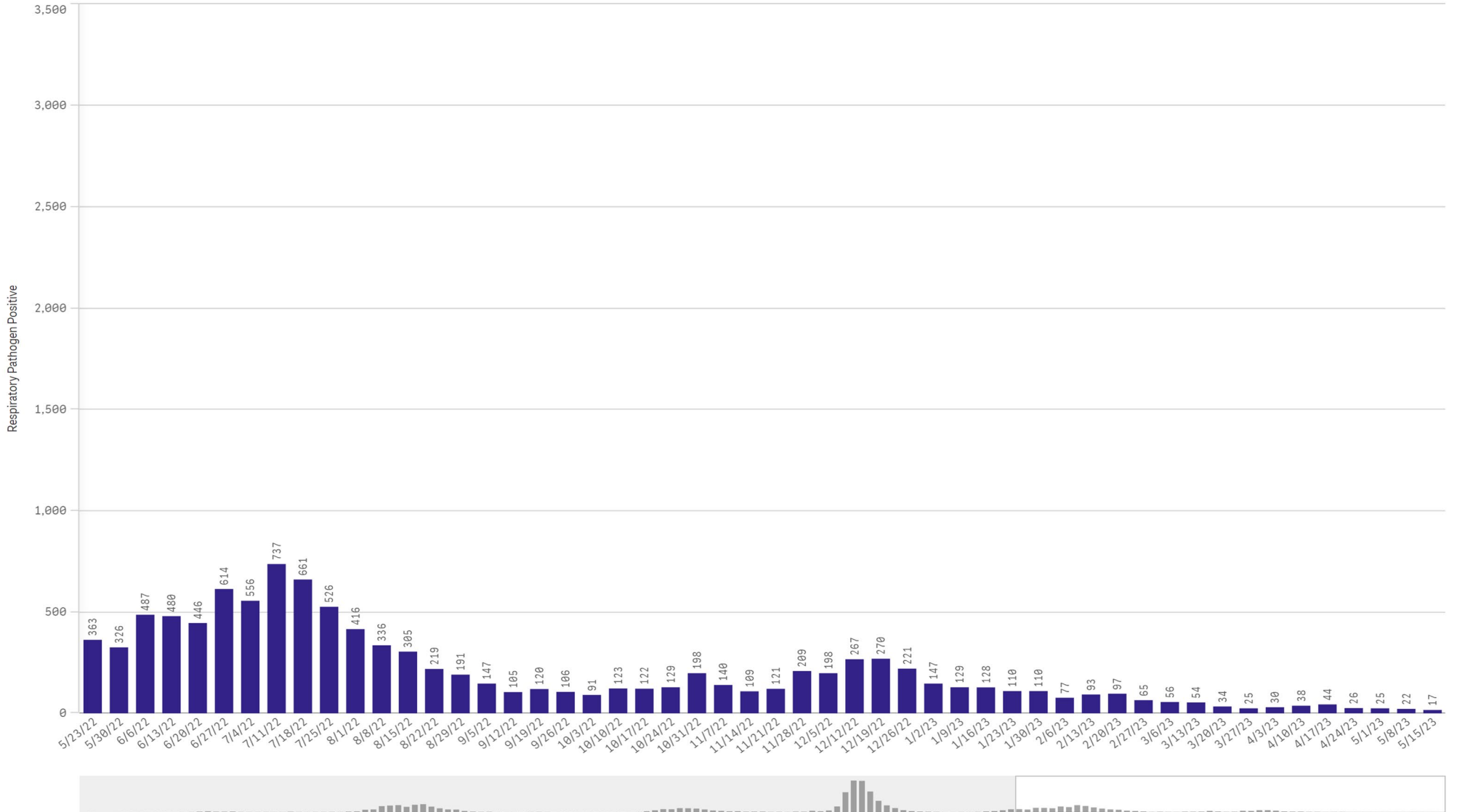
All Positive Respiratory Pathogens by Week Start - Data as of 5/21/2023



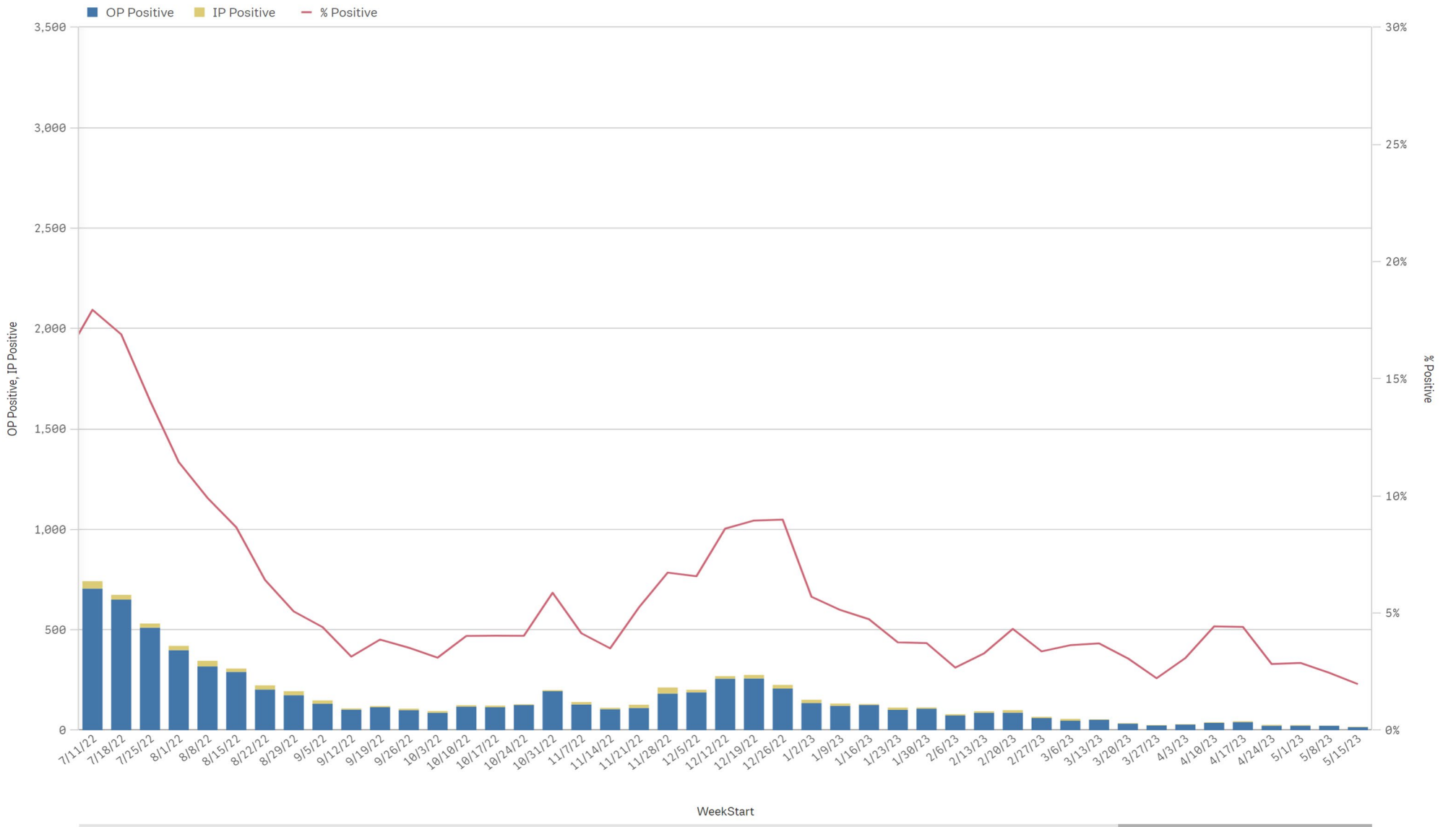
Positive SARS-CoV-2 Pathogens by Week Start - Data as of 5/21/2023



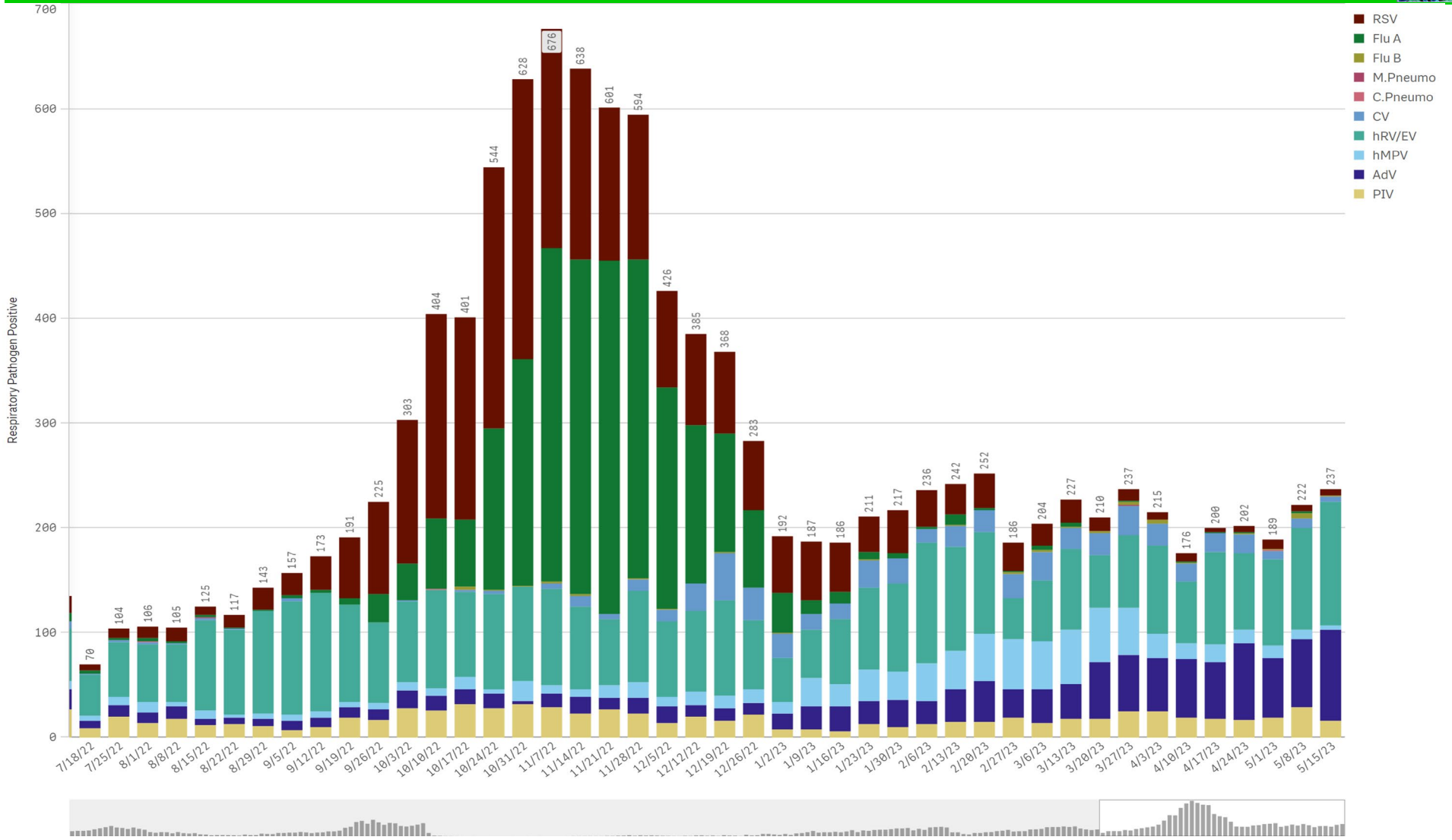
SARS-CoV-2 Positive Cases



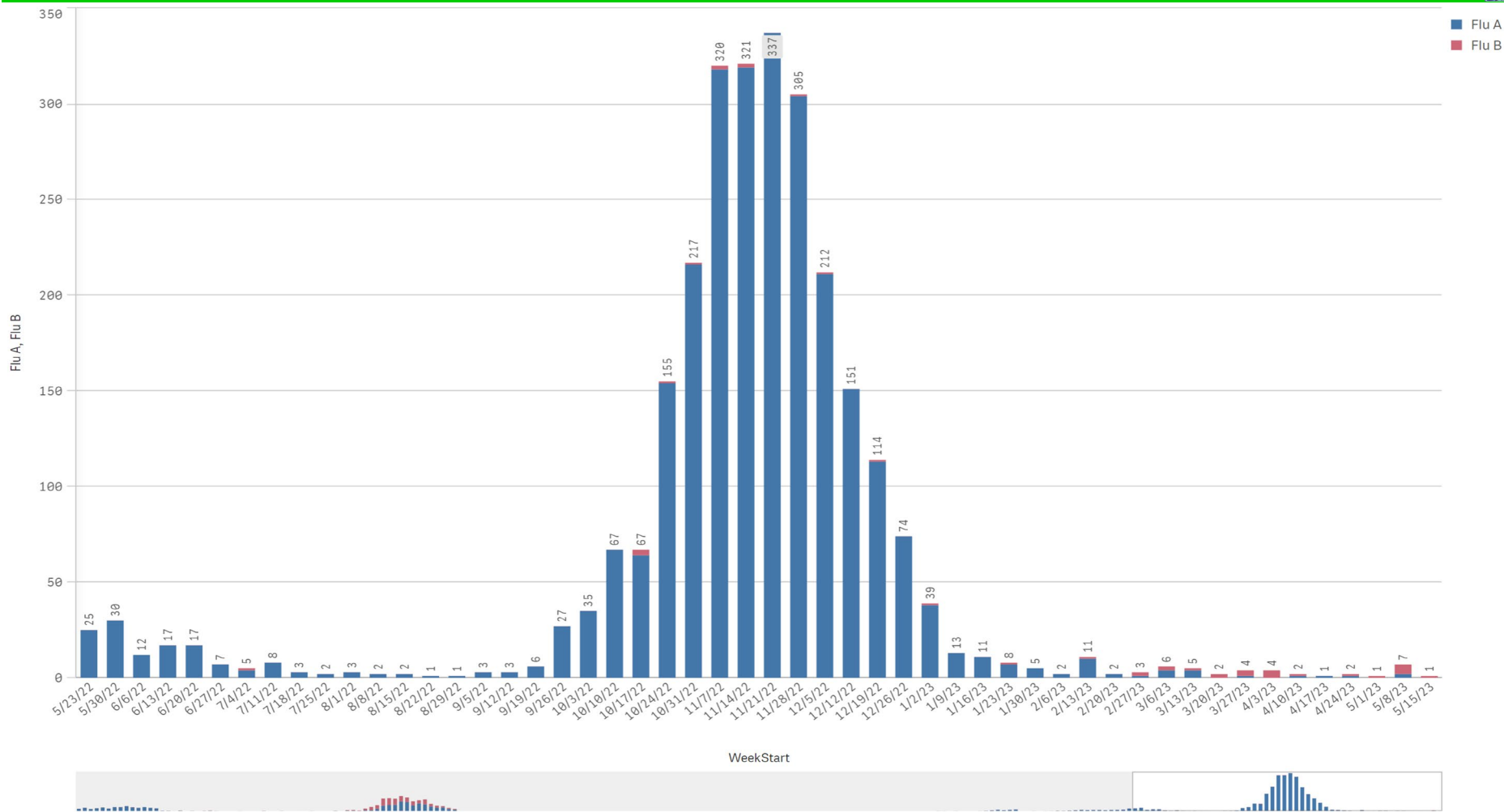
SARS-CoV-2 Positive by Encounter Type - Data as of 5/21/2023



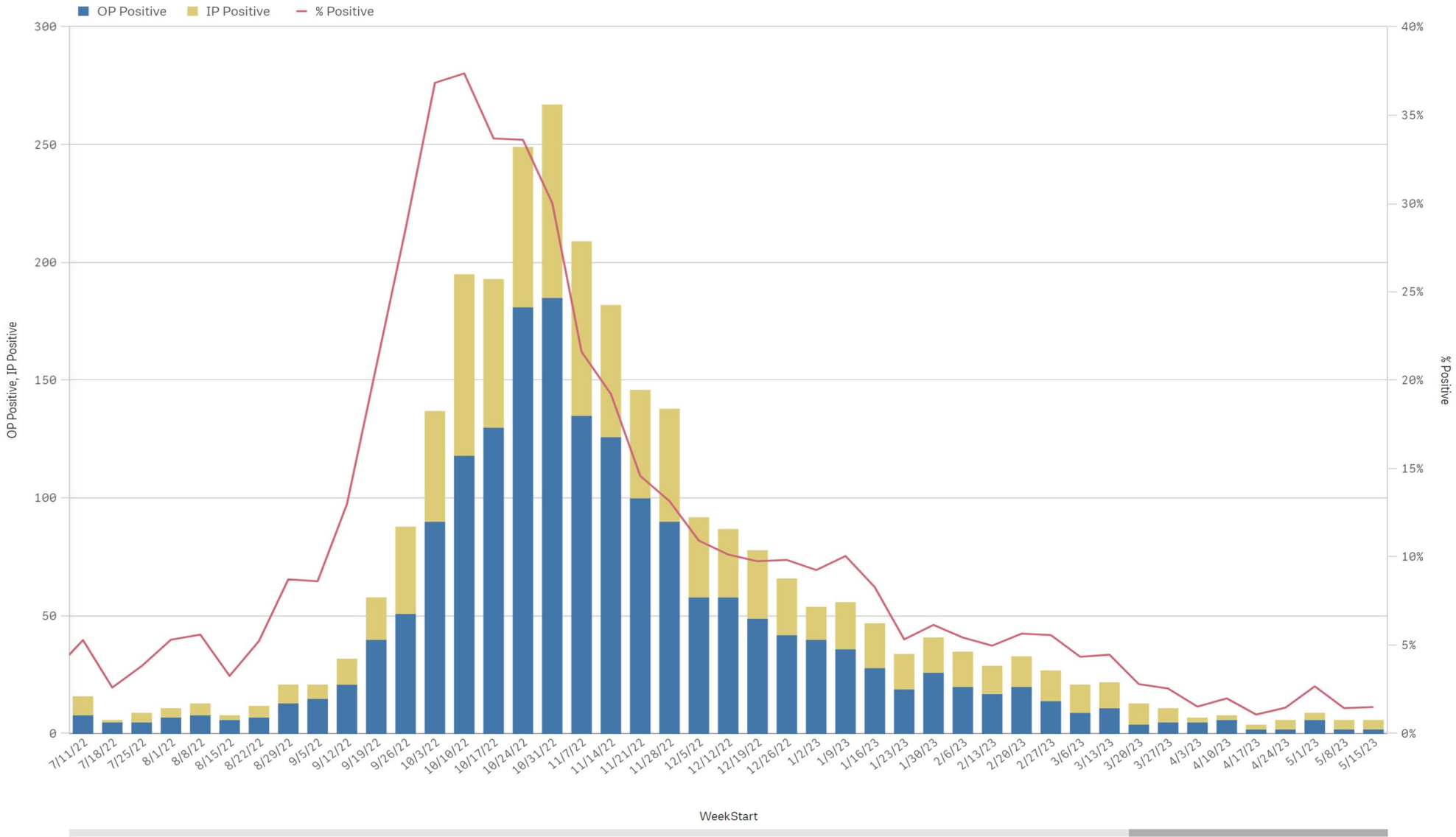
Positive Respiratory Pathogens by Week Start (excl SARS) - Data as of 5/21/2023



Influenza A & B Positive by Week Start - Data as of 5/21/2023



RSV - Data as of 5/21/2023

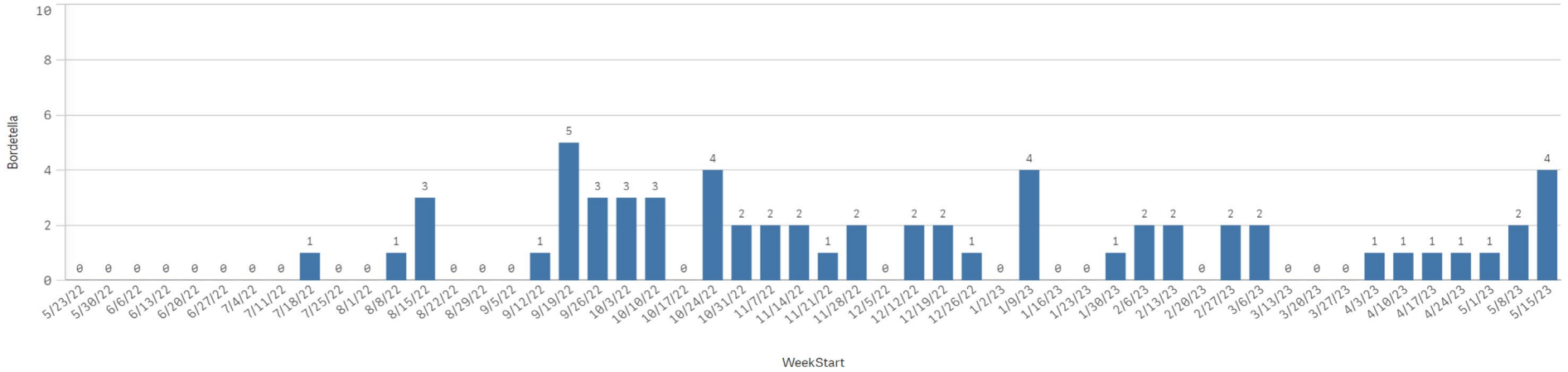




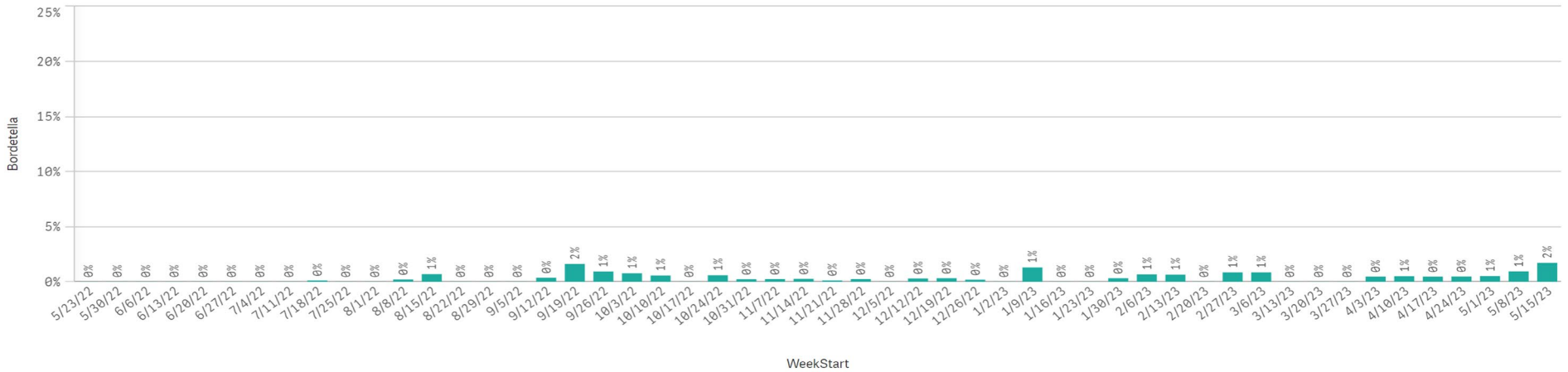
**B. Pert/Parap Positives by Week Start - Data as of 5/21/2023**



**B. Pertussis/Parapertussis Positives by Week**



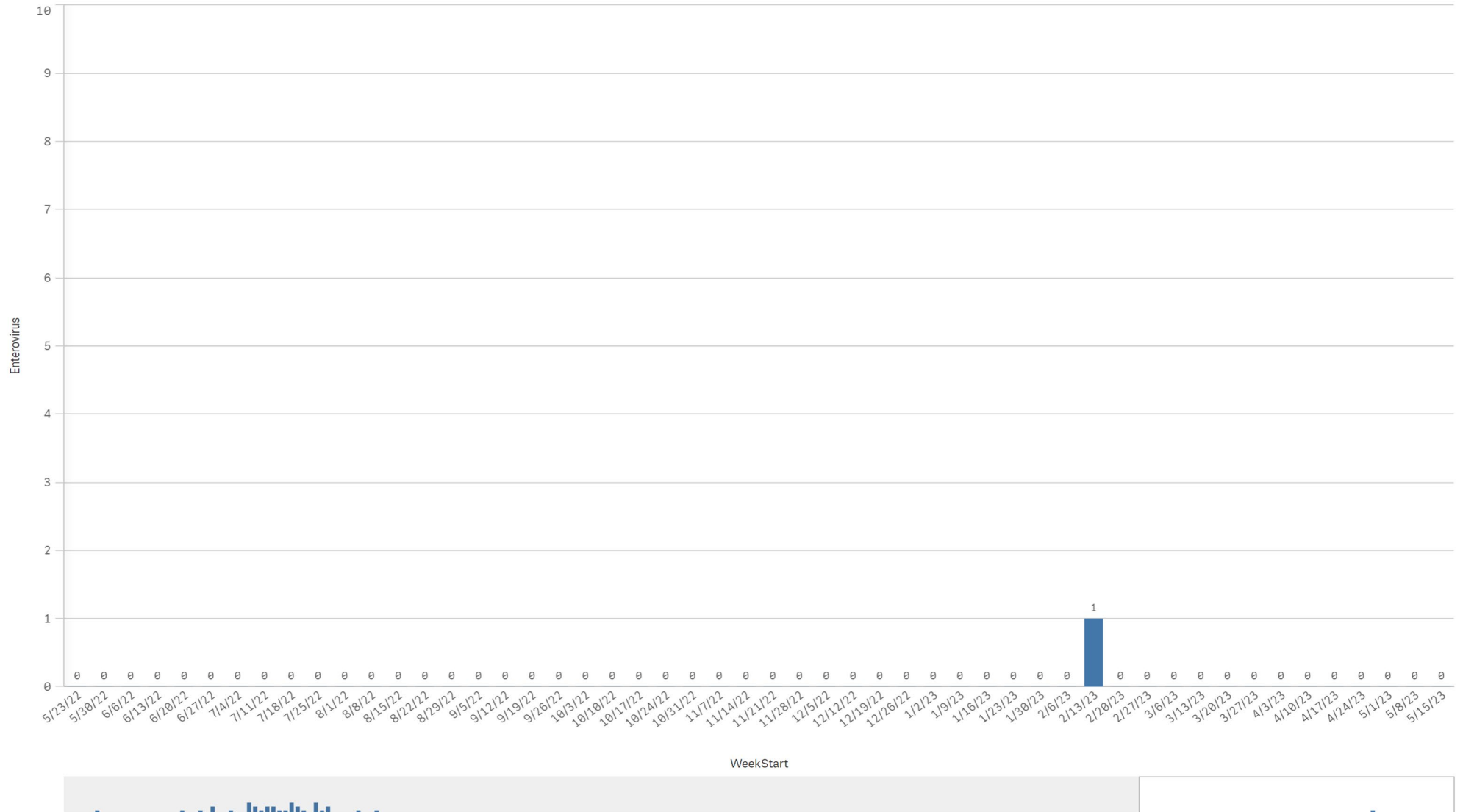
**B.pertussis / B.parapertussis % Positive by Week**



Enterovirus by Week Start - Data as of 5/21/2023



Enterovirus CSF Positive by Week



Enterovirus