

Volume and Positive Rate

Volume and Positive Rate - Data as of \*\*YTD for this data starts on the first Monday in October.



Component Group	Q	Pathogen Positive Previous Week 4/17/2023 - 4/23/2023	Pathogen Tests Previous Week 4/17/2023 - 4/23/2023	Previous Week Positive Rate	Pathogen Positive Current WTD* 4/24/2023 - 4/30/2023	Pathogen Tests Current WTD* 4/24/2023 - 4/30/2023	Current WTD** Positive Rate	Pathogen Tested YTD**	Pathogen Positive YTD**	Positive Rate YTD**
<b>Totals</b>		<b>212</b>	<b>1,867</b>	<b>11.4%</b>	<b>19</b>	<b>163</b>	<b>11.7%</b>	<b>105,220</b>	<b>12,453</b>	<b>12%</b>
Human Rhinovirus/Enterovirus		88	263	33.5%	9	27	33.3%	8,163	2,216	27%
Adenovirus		54	263	20.5%	7	27	25.9%	8,163	736	9%
COVID-19(SARS-CoV-2,PCR)		44	998	4.4%	0	68	0.0%	71,928	3,487	5%
Coronavirus(other than COVID-19)		18	263	6.8%	0	27	0.0%	8,163	482	6%
Parainfluenza		18	263	6.8%	2	27	7.4%	8,163	566	7%
Human Metapneumovirus		17	263	6.5%	0	27	0.0%	8,163	671	8%
RSV		4	362	1.1%	1	49	2.0%	18,625	2,482	13%
B.Pertussis/Parapertussis		1	25	4.0%	0	2	0.0%	814	40	5%
Influenza A		1	362	0.3%	0	49	0.0%	18,633	2,463	13%
Chlamydia Pneumoniae		0	263	0.0%	0	27	0.0%	8,163	1	0%
Enterovirus,CSF		0	1	0.0%	0	0	-	14	1	7%
Influenza B		0	362	0.0%	1	49	2.0%	18,633	31	0%
Mycoplasma Pneumoniae		0	263	0.0%	0	27	0.0%	8,163	1	0%

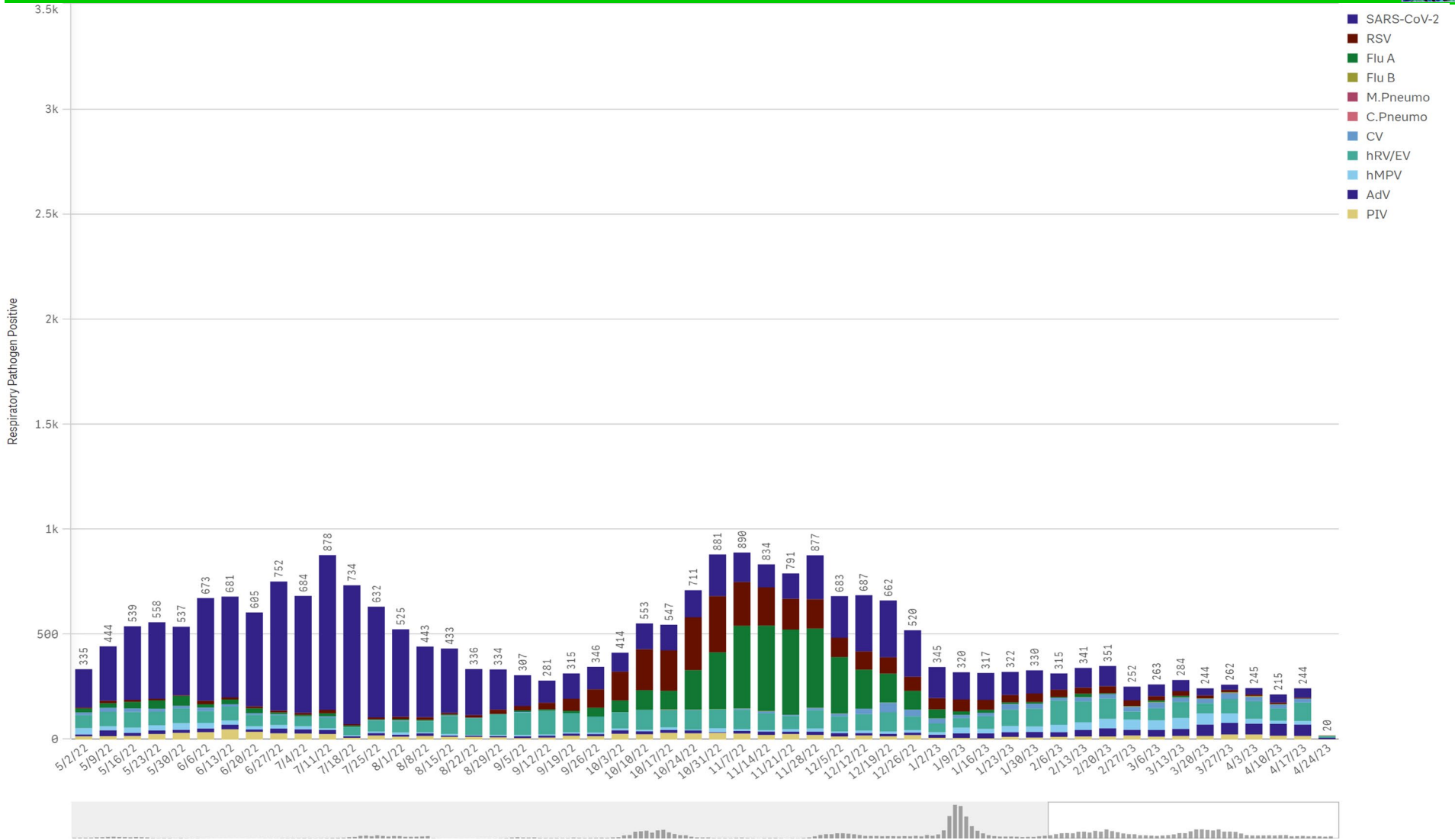
\*Current WTD may not be a completed week, depending on when the data is being reviewed. Refer to data date on page header for reference.

\*\*YTD for this data starts on the first Monday in October.

\*Current WTD may not be a complete week, depending on when data is being reviewed. Refer to data date on page header for reference.  
\*\*YTD for this data starts on the first Monday in October.

Positive Respiratory Pathogens by Week

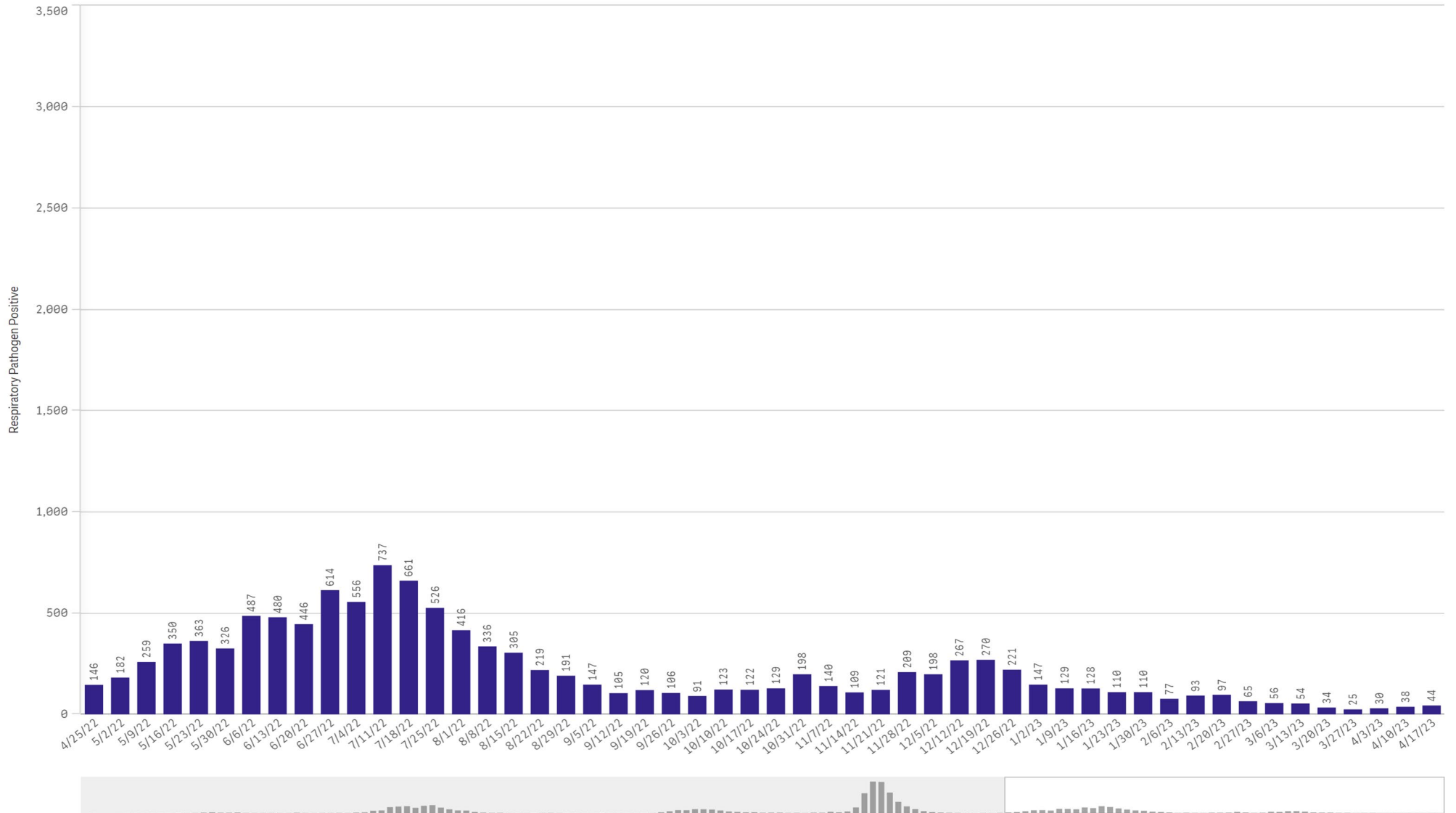
All Positive Respiratory Pathogens by Week Start - Data as of 4/25/2023



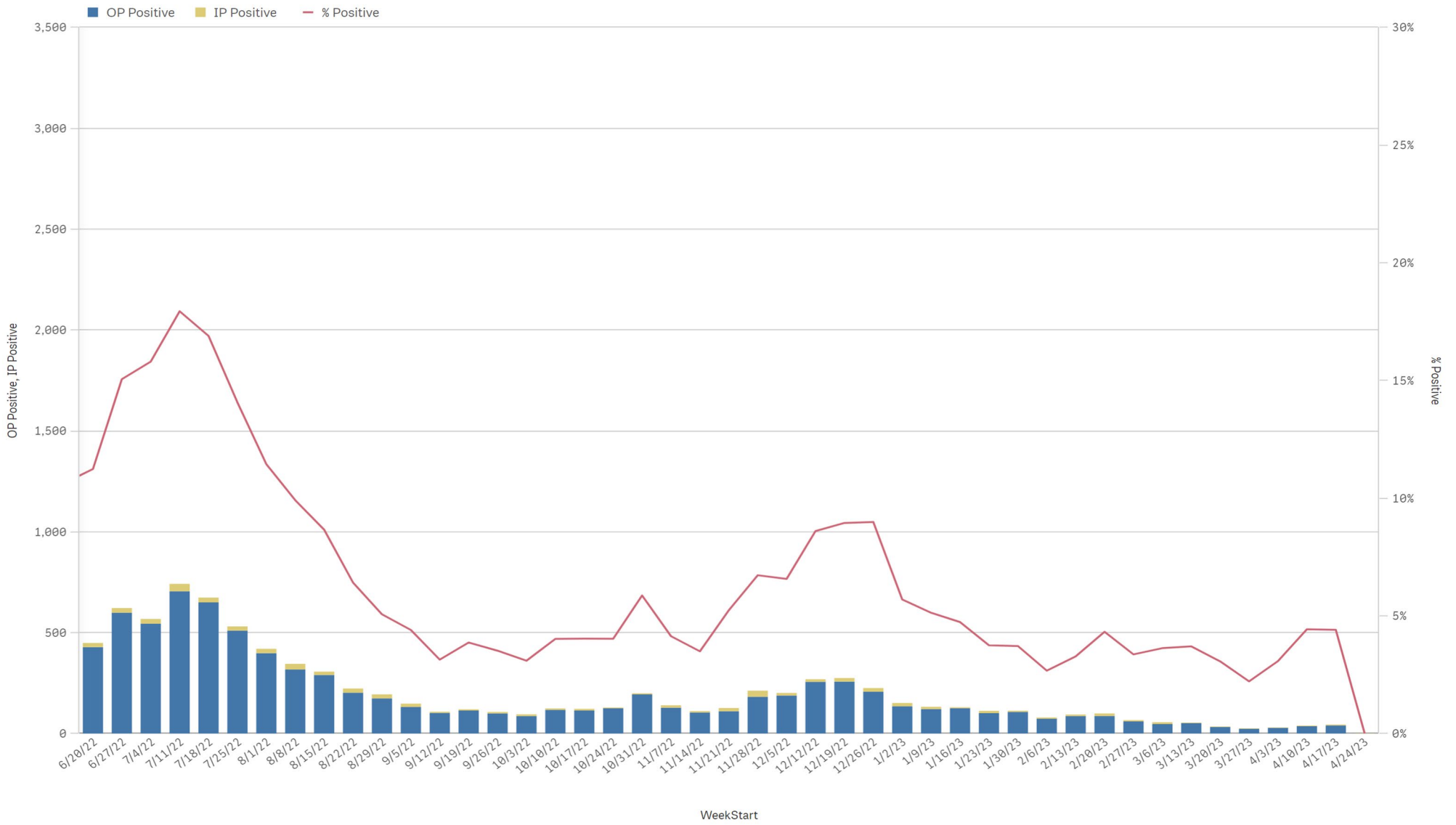
Positive SARS-CoV-2 Pathogens by Week Start - Data as of 4/25/2023



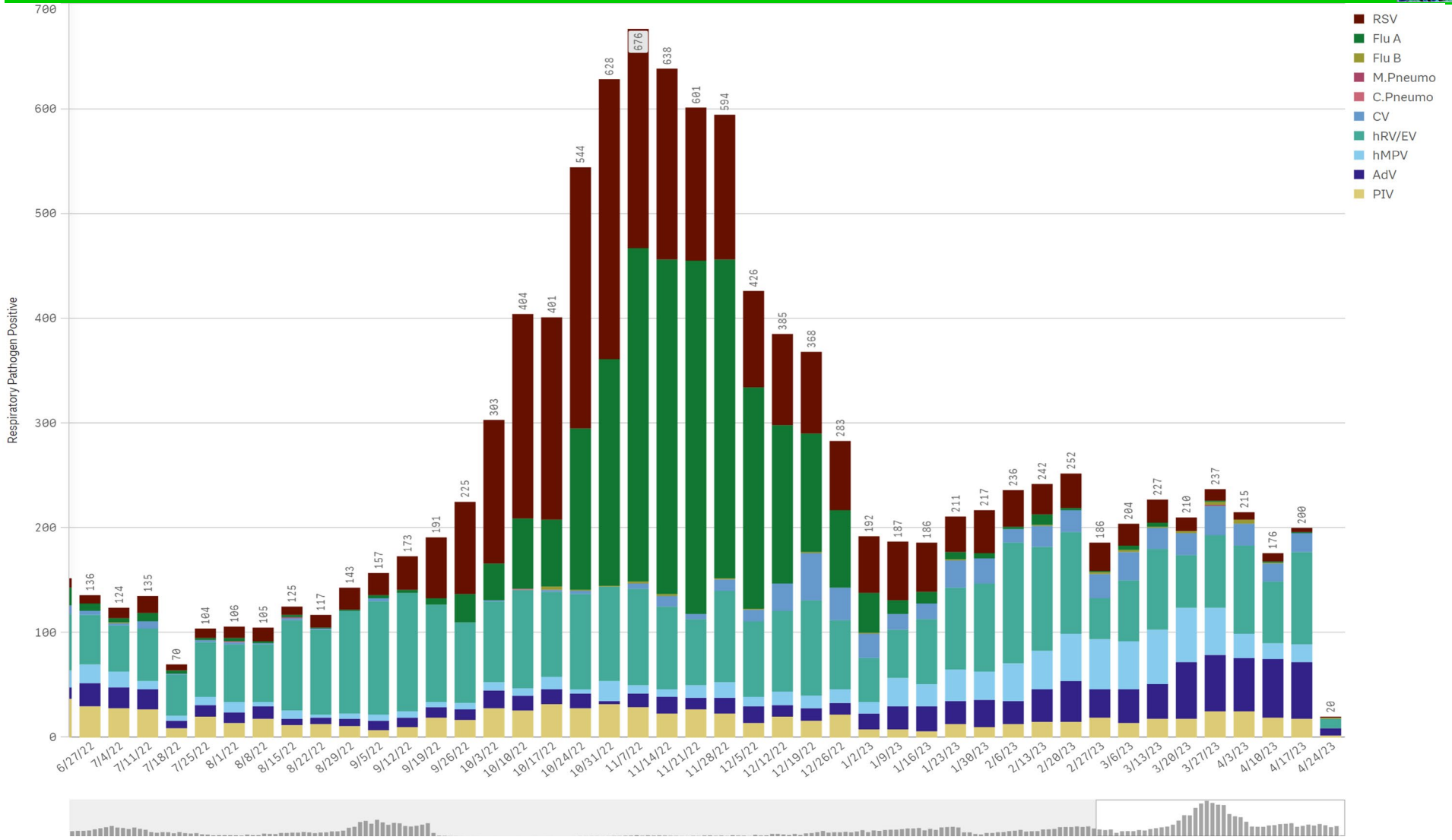
SARS-CoV-2 Positive Cases



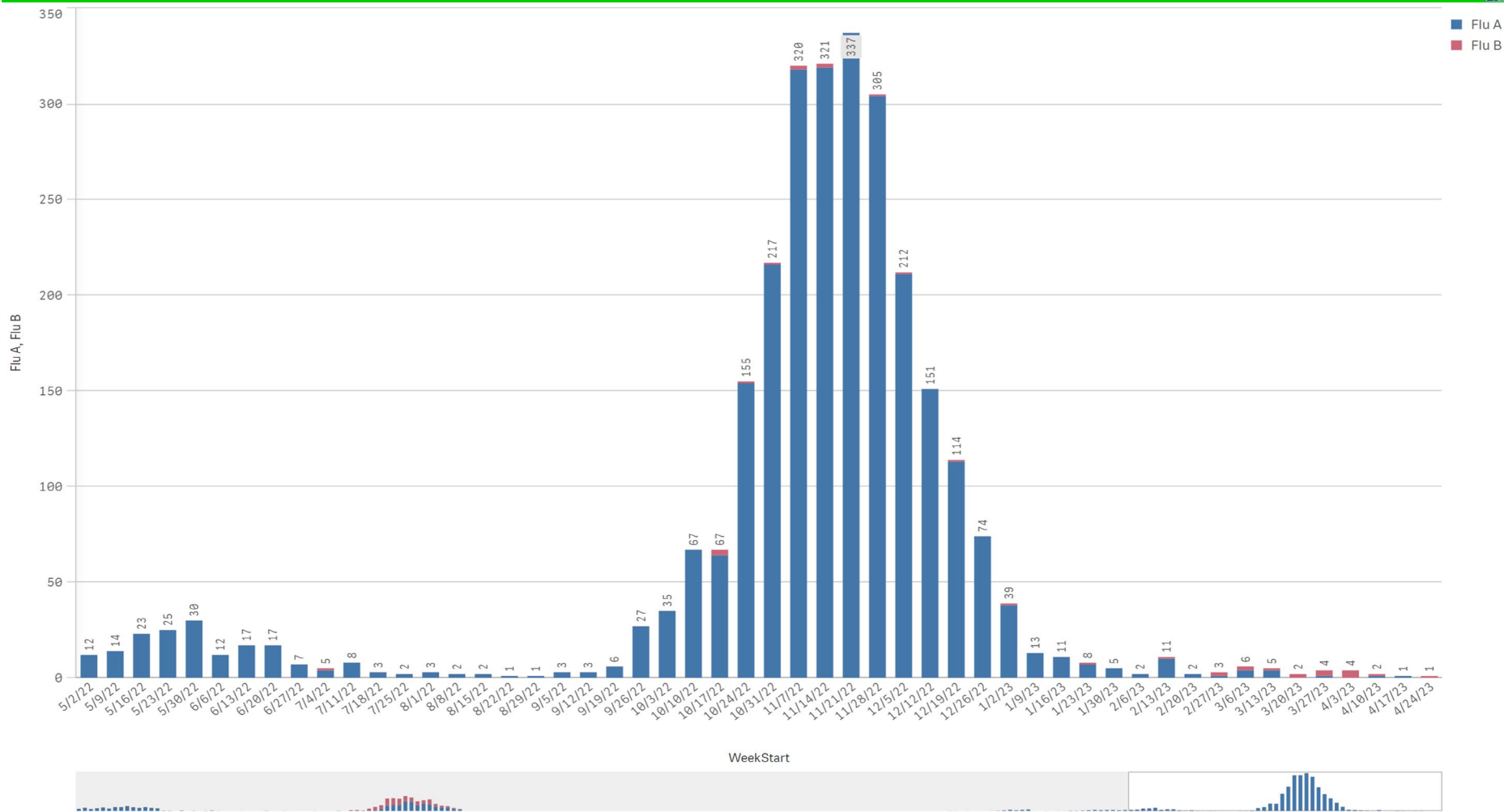
SARS-CoV-2 Positive by Encounter Type - Data as of 4/25/2023



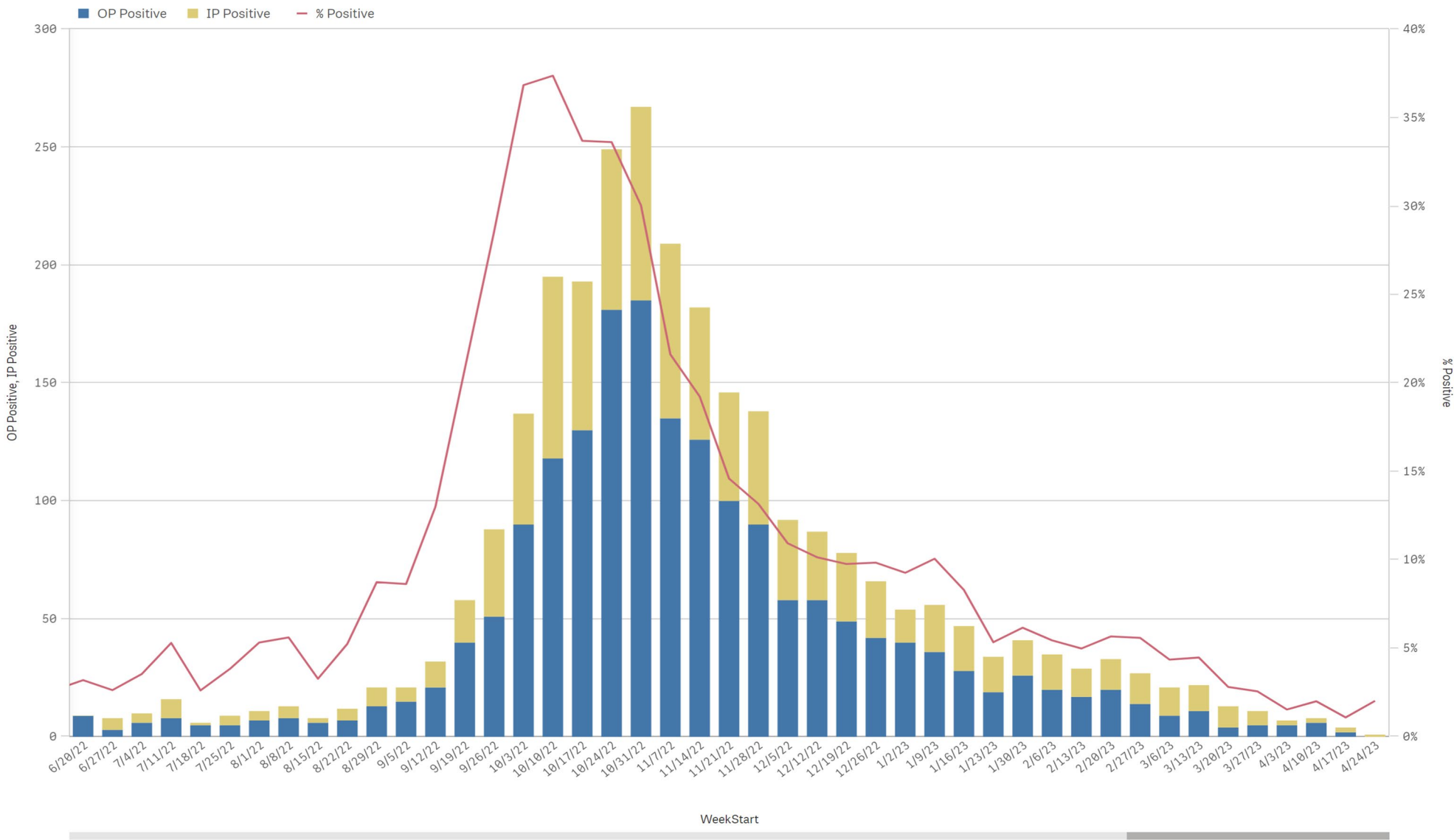
Positive Respiratory Pathogens by Week Start (excl SARS) - Data as of 4/25/2023



Influenza A & B Positive by Week Start - Data as of 4/25/2023



RSV - Data as of 4/25/2023

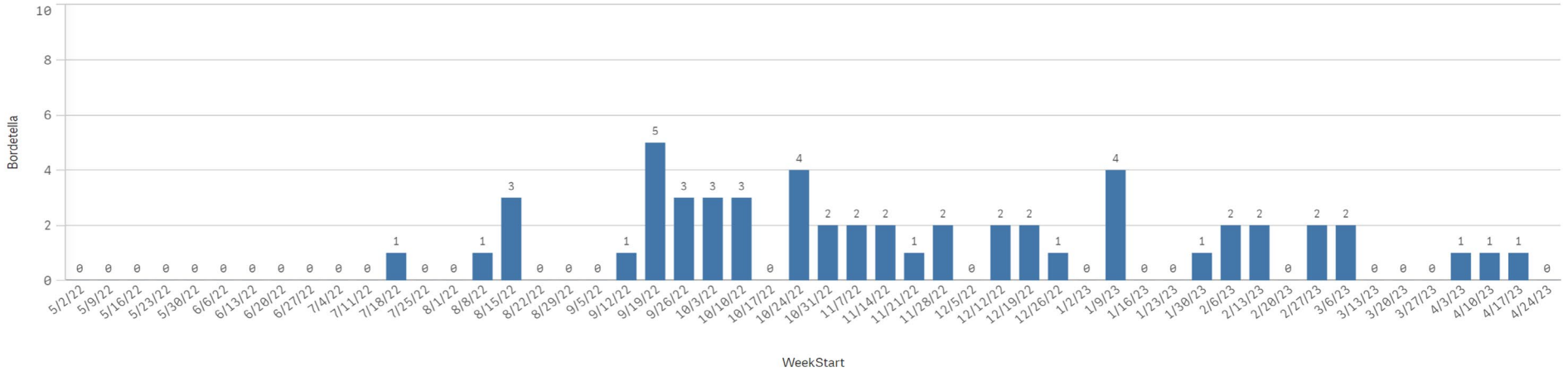




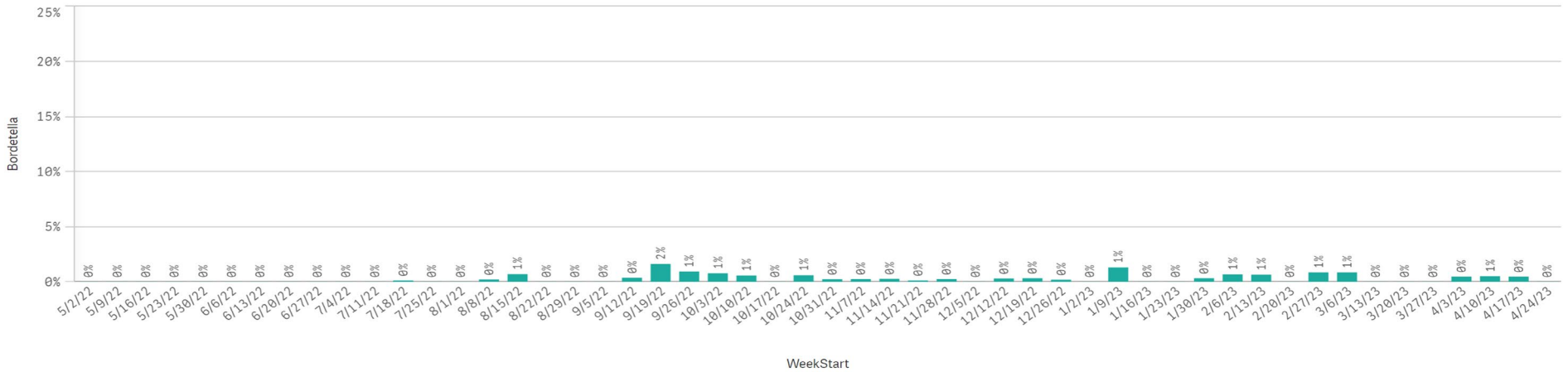
B. Pert/Parap Positives by Week Start - Data as of 4/25/2023



B. Pertussis/Parapertussis Positives by Week



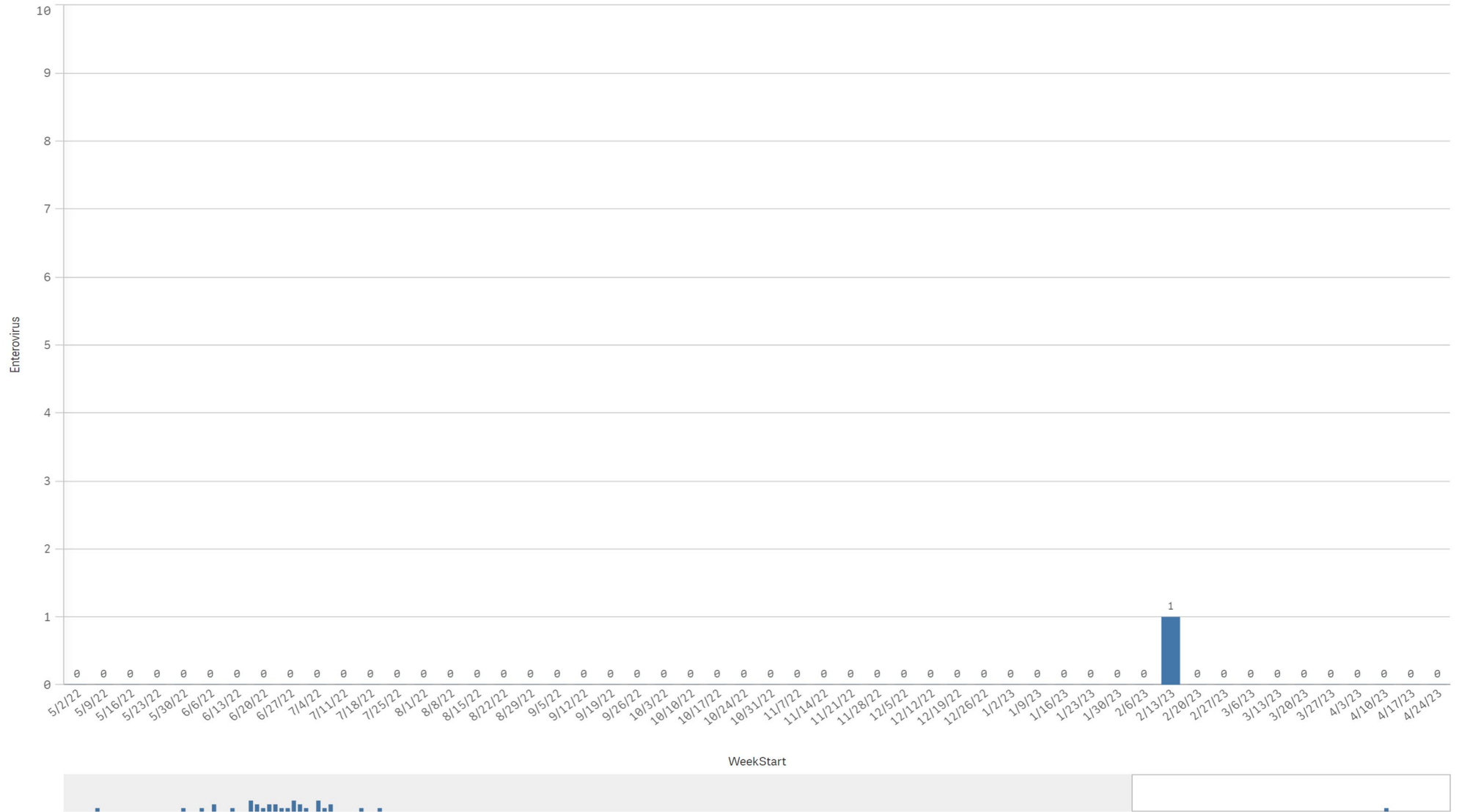
B.pertussis / B.parapertussis % Positive by Week



Enterovirus by Week Start - Data as of 4/25/2023



Enterovirus CSF Positive by Week



Enterovirus