

Volume and Positive Rate

Volume and Positive Rate - Data as of \*\*YTD for this data starts on the first Monday in October.



Component Group	Q	Pathogen Positive Previous Week 5/27/2024 - 6/2/2024	Pathogen Tests Previous Week 5/27/2024 - 6/2/2024	Previous Week Positive Rate	Pathogen Positive Current WTD* 6/3/2024 - 6/9/2024	Pathogen Tests Current WTD* 6/3/2024 - 6/9/2024	Current WTD** Positive Rate	Pathogen Tested YTD**	Pathogen Positive YTD**	Positive Rate YTD**
<b>Totals</b>		<b>156</b>	<b>1,204</b>	<b>13.0%</b>	<b>15</b>	<b>133</b>	<b>11.3%</b>	<b>63,086</b>	<b>9,966</b>	<b>16%</b>
Human Rhinovirus/Enterovirus		80	244	32.8%	5	28	17.9%	9,576	2,741	29%
Parainfluenza		36	244	14.8%	1	28	3.6%	9,576	618	6%
Human Metapneumovirus		14	244	5.7%	4	28	14.3%	9,576	544	6%
COVID-19(SARS-CoV-2,PCR)		13	412	3.2%	2	44	4.5%	31,616	1,610	5%
Adenovirus		12	244	4.9%	1	28	3.6%	9,576	464	5%
Influenza B		8	372	2.2%	1	50	2.0%	19,082	389	2%
B.Pertussis/Parapertussis		6	55	10.9%	1	4	25.0%	2,183	190	9%
Influenza A		5	372	1.3%	1	50	2.0%	19,082	1,382	7%
Coronavirus(other than COVID-19)		3	244	1.2%	0	28	0.0%	9,576	429	4%
Mycoplasma Pneumoniae		3	244	1.2%	0	28	0.0%	9,576	53	1%
RSV		1	372	0.3%	0	50	0.0%	19,080	2,242	12%
Chlamydia Pneumoniae		0	244	0.0%	0	28	0.0%	9,576	1	0%
Enterovirus,CSF		0	0	-	0	0	-	20	5	25%

\*Current WTD may not be a completed week, depending on when the data is being reviewed. Refer to data date on page header for reference.

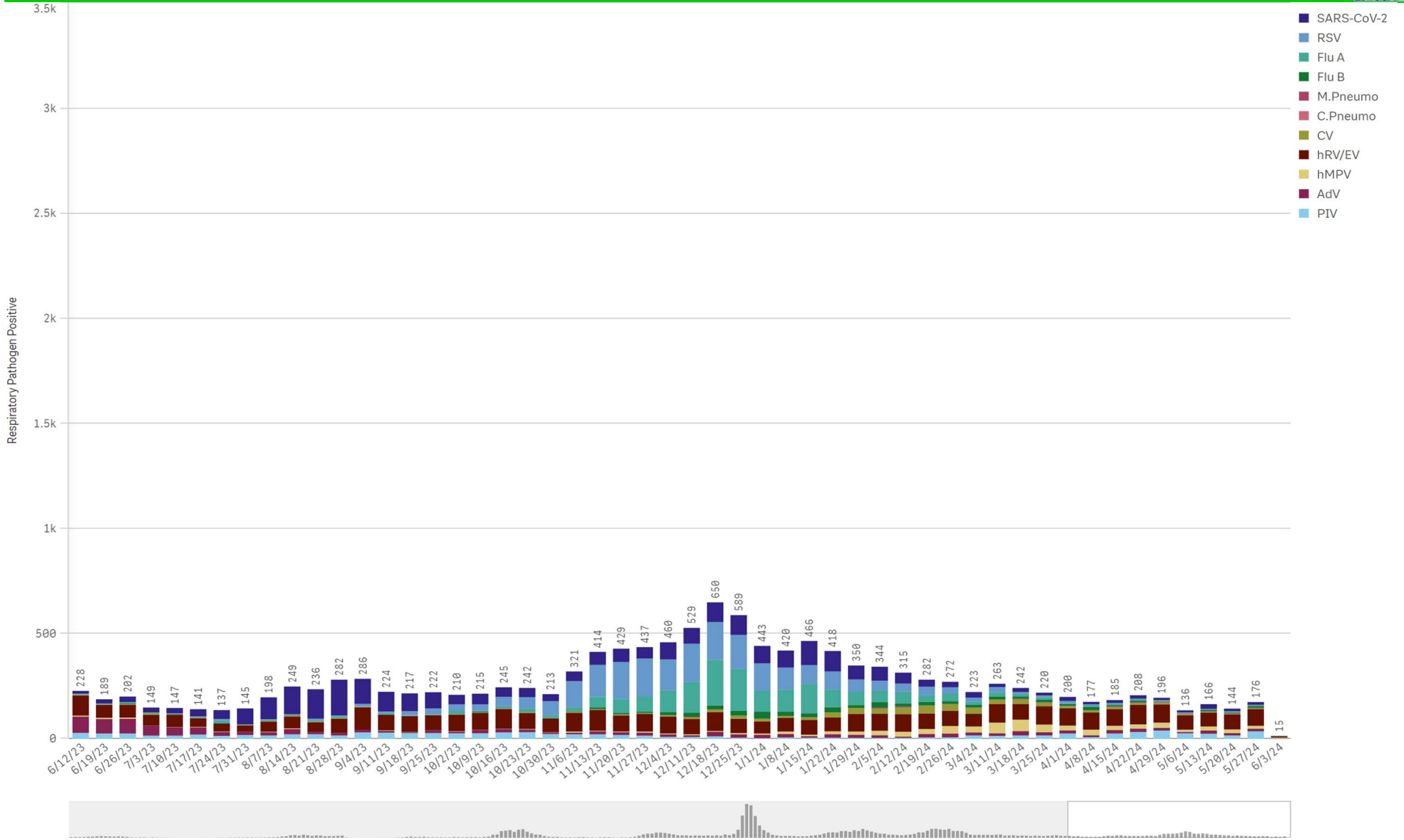
\*\*YTD for this data starts on the first Monday in October.

\*Current WTD may not be a complete week, depending on when data is being reviewed. Refer to data date on page header for reference.

\*\*YTD for this data starts on the first Monday in October.

Positive Respiratory Pathogens by Week

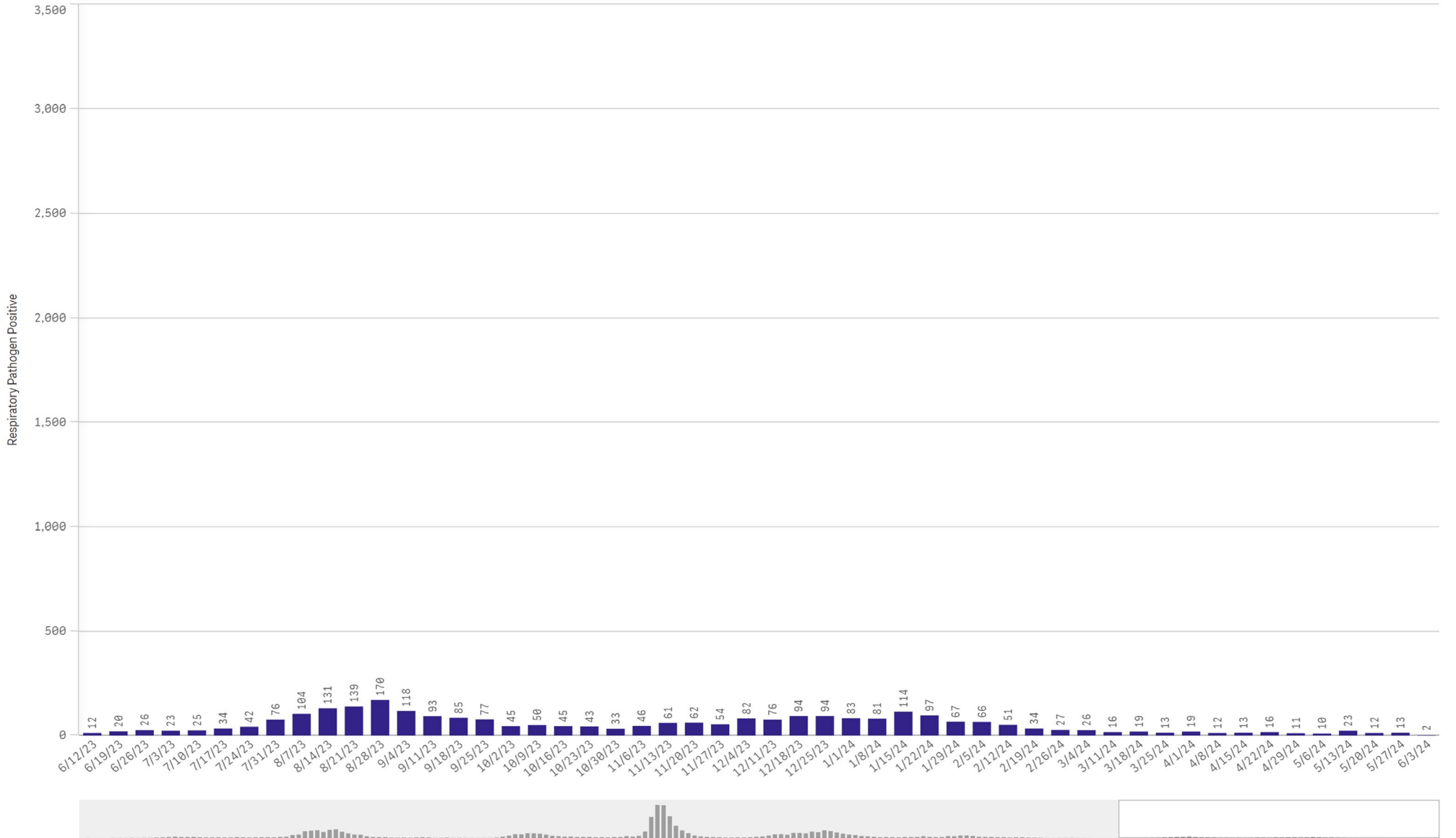
All Positive Respiratory Pathogens by Week Start - Data as of 6/3/2024



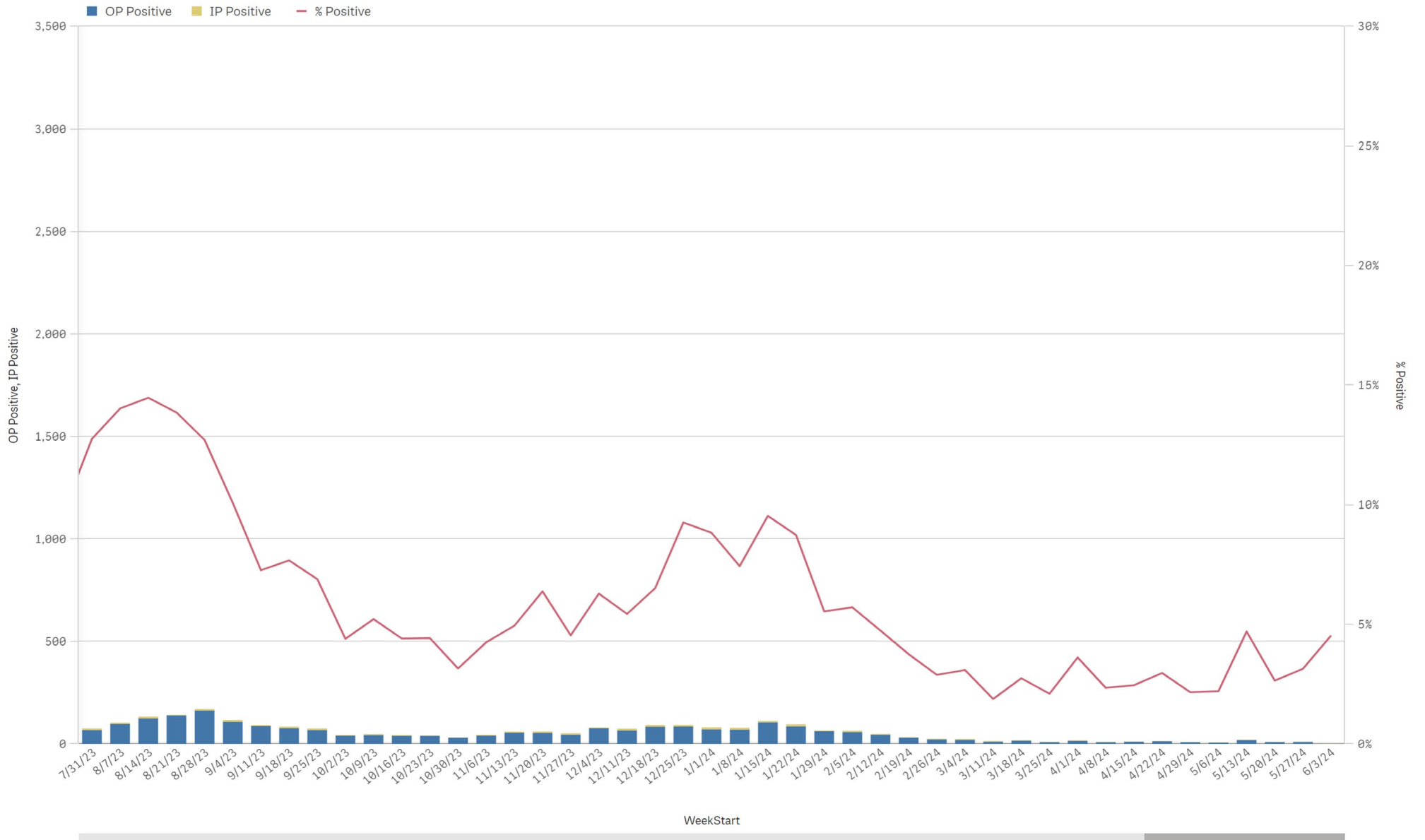
Positive SARS-CoV-2 Pathogens by Week Start - Data as of 6/3/2024



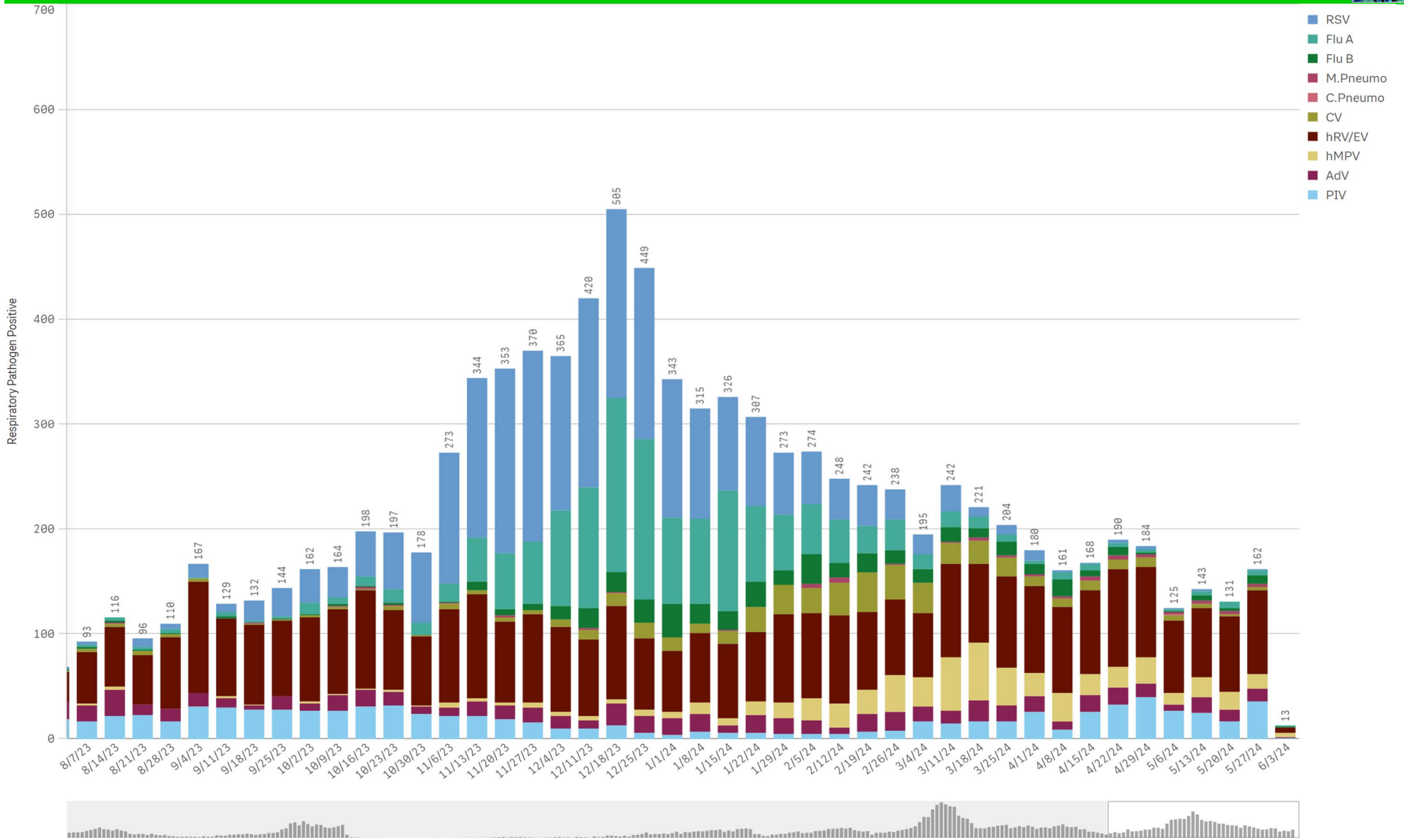
SARS-CoV-2 Positive Cases



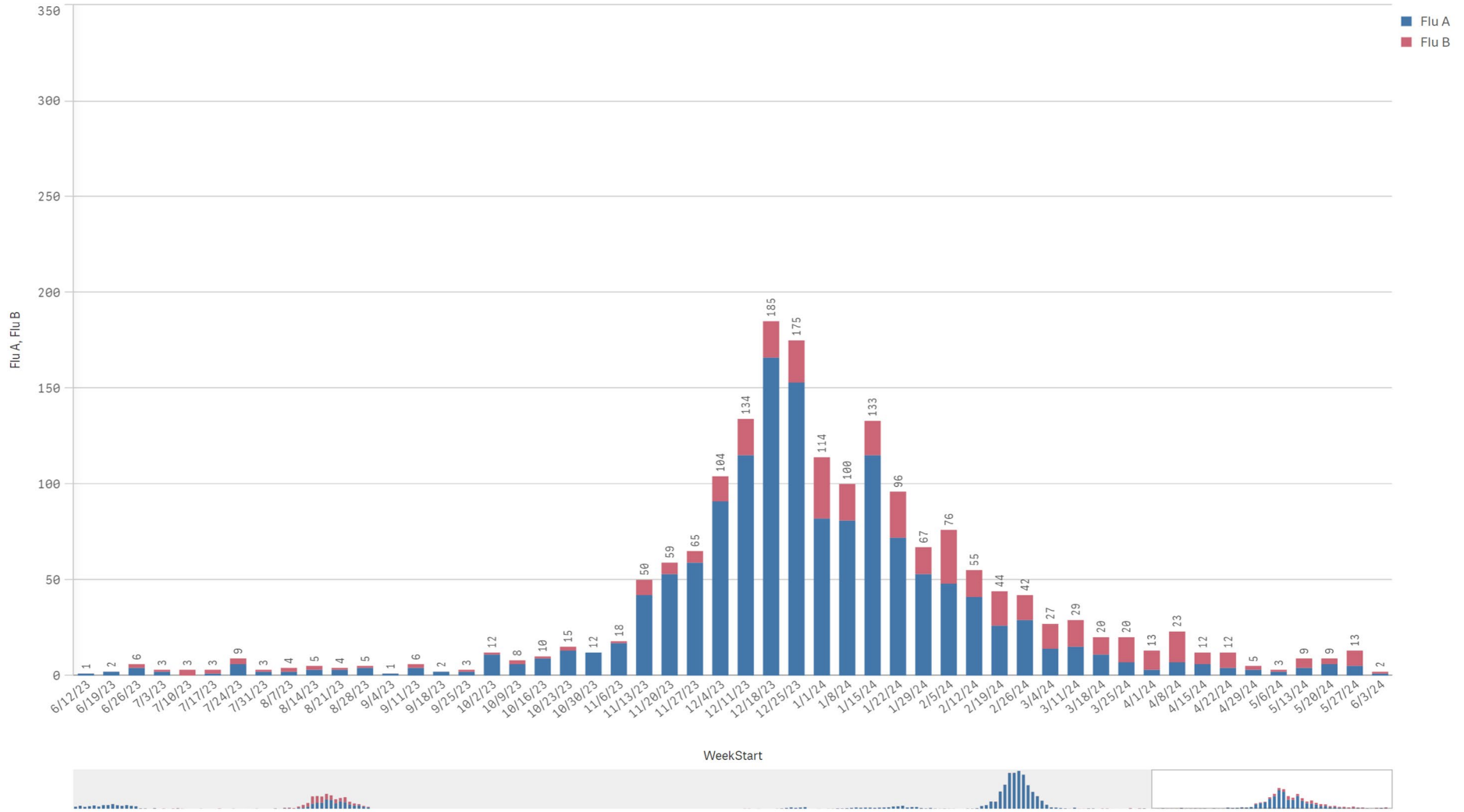
SARS-CoV-2 Positive by Encounter Type - Data as of 6/3/2024



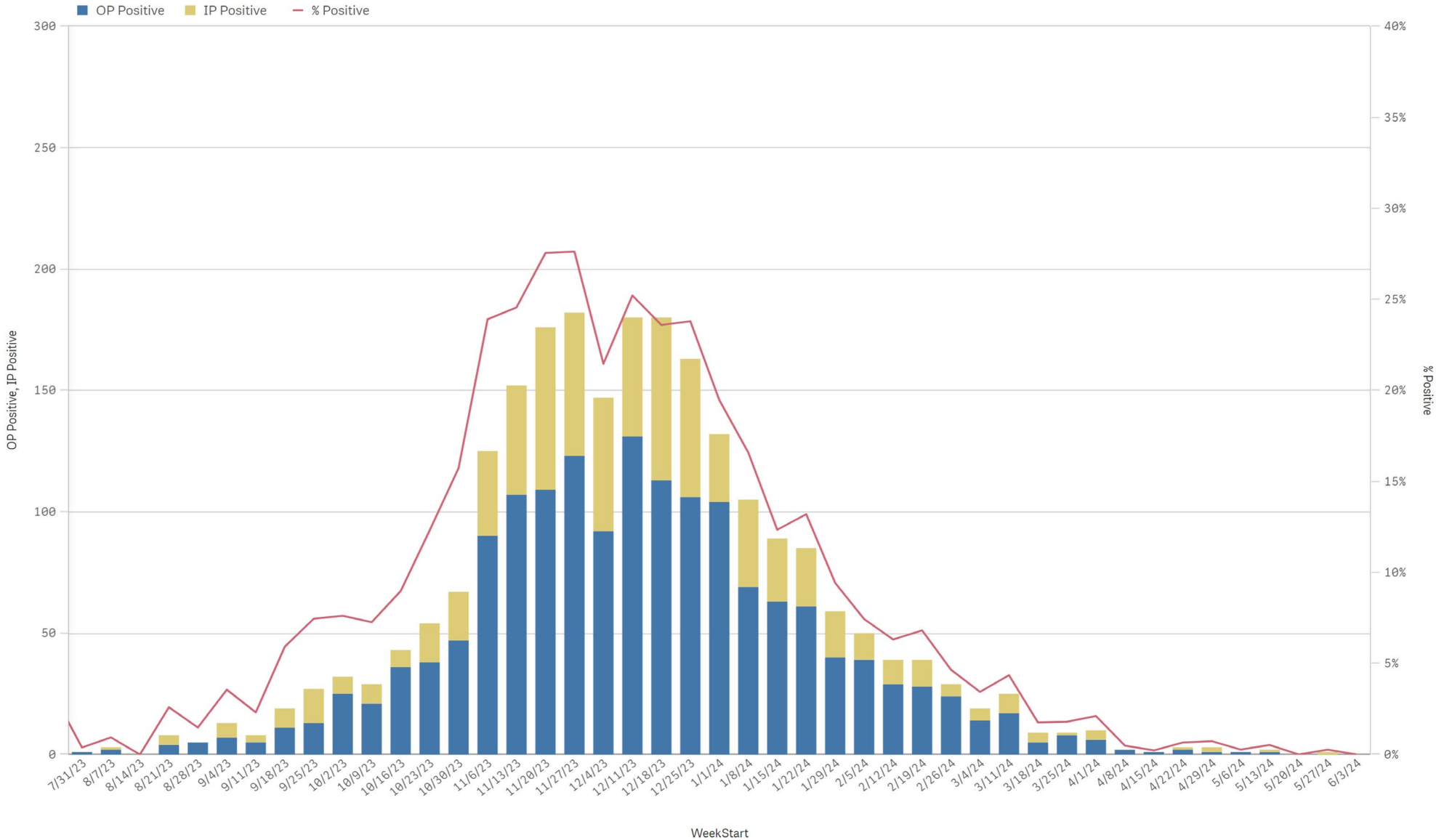
Positive Respiratory Pathogens by Week Start (excl SARS) - Data as of 6/3/2024



Influenza A & B Positive by Week Start - Data as of 6/3/2024



RSV - Data as of 6/3/2024

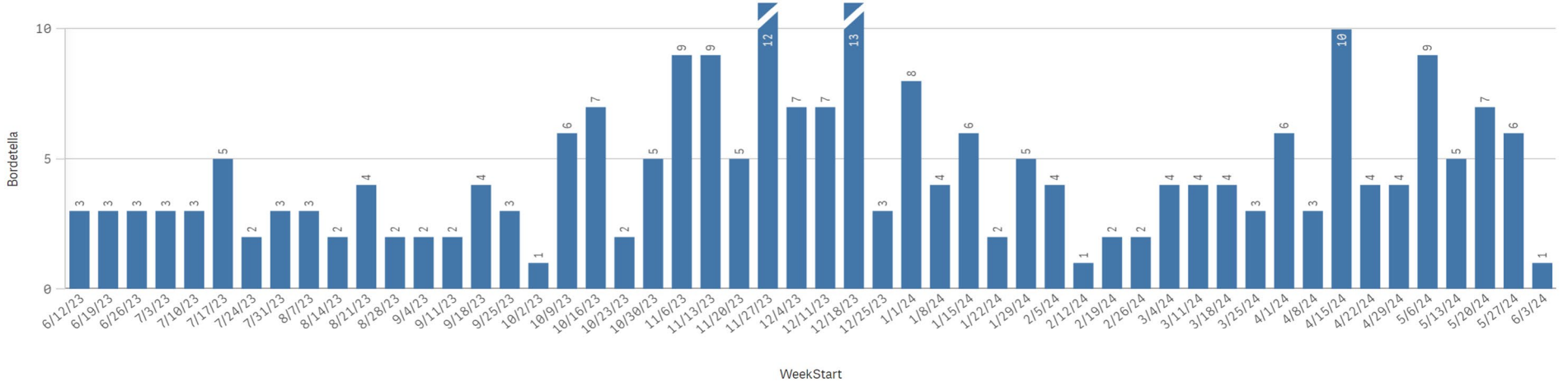




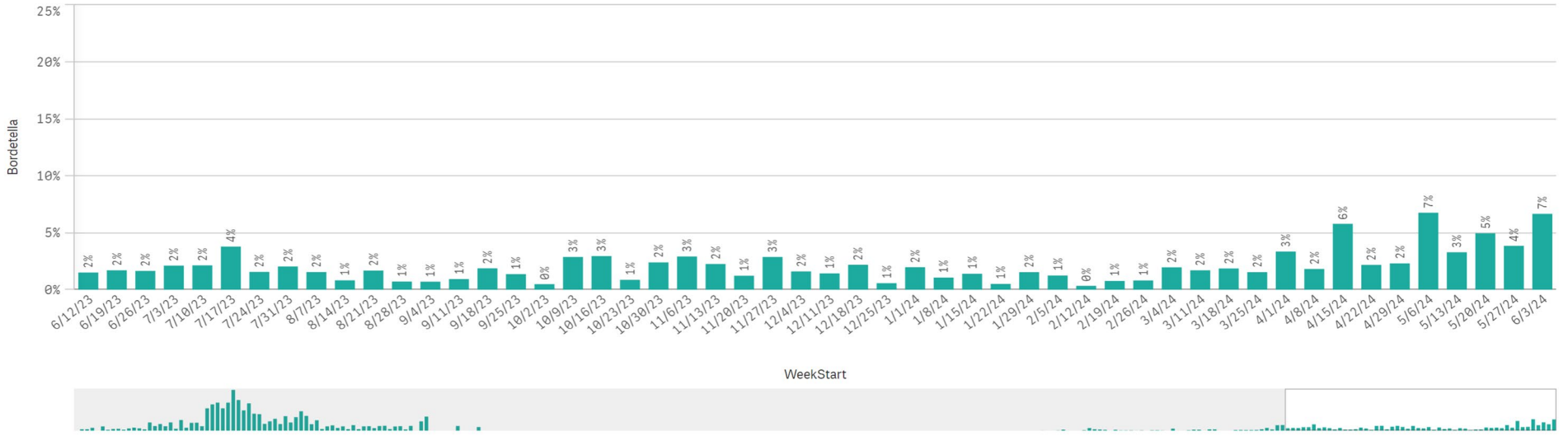
B. Pert/Parap Positives by Week Start - Data as of 6/3/2024



B. Pertussis/Parapertussis Positives by Week

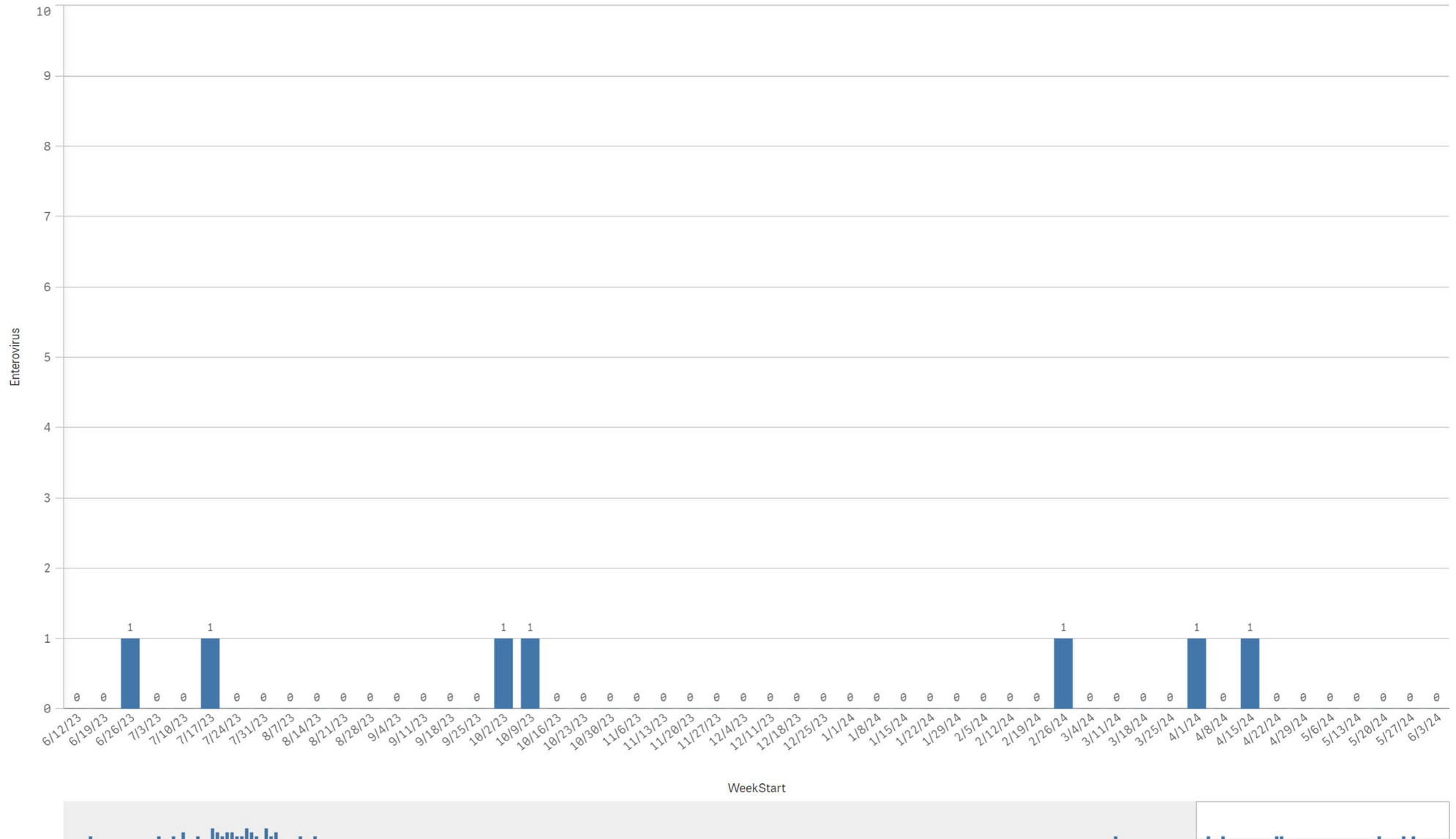


B.pertussis / B.parapertussis % Positive by Week





Enterovirus CSF Positive by Week



Enterovirus