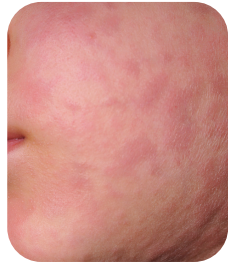
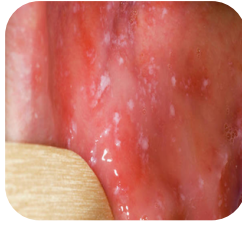


MEASLES INFECTION AND PREVENTION FOR CLINICIANS

CLINICAL FEATURES



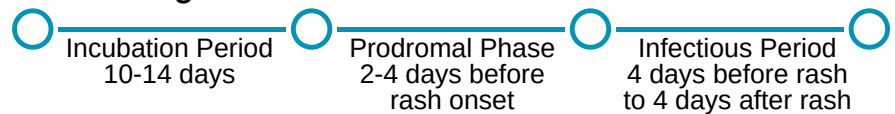
Case Definition:

- Fever (up to 105°F), **and**
- Rash, **and**
- Cough, coryza (runny nose), or conjunctivitis.

Measles Rash:

- Starts on face, at hairline, or behind ears.
- Spreads downwards to neck, trunk, and extremities.
- Maculopapular (small raised or flat red bumps, spots may join together as rash spreads).
- Not usually itchy.
- Koplik spots may be present on buccal mucosa.

Disease Progression:



MEASLES-MUMPS-RUBELLA (MMR) VACCINE RECOMMENDATIONS

Routinely Recommended for Children:

- 12-15 months (first dose)
- 4-6 years of age (second dose), or at least 28 days following first dose.

Before International Travel:

Infants 6-11 months:

- Receive 1-dose early.
- Follow recommended schedule. Receive another dose at 12-15 months and a final dose at 4-6 years.

Unvaccinated children 12+ months, including teens and adults with no evidence of immunity:

- Receive first dose immediately.
- Receive second dose at least 28 days following first dose.

DIAGNOSIS

Consider measles in patients presenting with febrile rash illness and clinically compatible measles symptoms, especially if the patient recently traveled internationally or was exposed to a person suspected to have measles.

Specimen Testing

Collect both from suspected case(s):

- Serum sample for IgM antibody testing, and
- Throat or nasopharyngeal (NP) swab for real-time polymerase chain reaction (RT-PCR) testing.

Report Suspected and Confirmed Cases

Healthcare providers are required to report to their local health department.

- Complete [Confidential Morbidity Report](#).
- Fax to (619) 692-5677, or
- Email to PHS-IZPHN.HHSA@sdcounty.ca.gov, or
- Call (866) 358-2966 option 5, or
- **Afterhours & weekends** call 858-565-5255

Resources:

- [San Diego County Epidemiology & Immunization Services Branch](#)
- [Centers for Disease Control and Prevention](#)