

# Volume and Positive Rate

Volume and Positive Rate - Data as of \*\*YTD for this data starts on the first Monday in October.



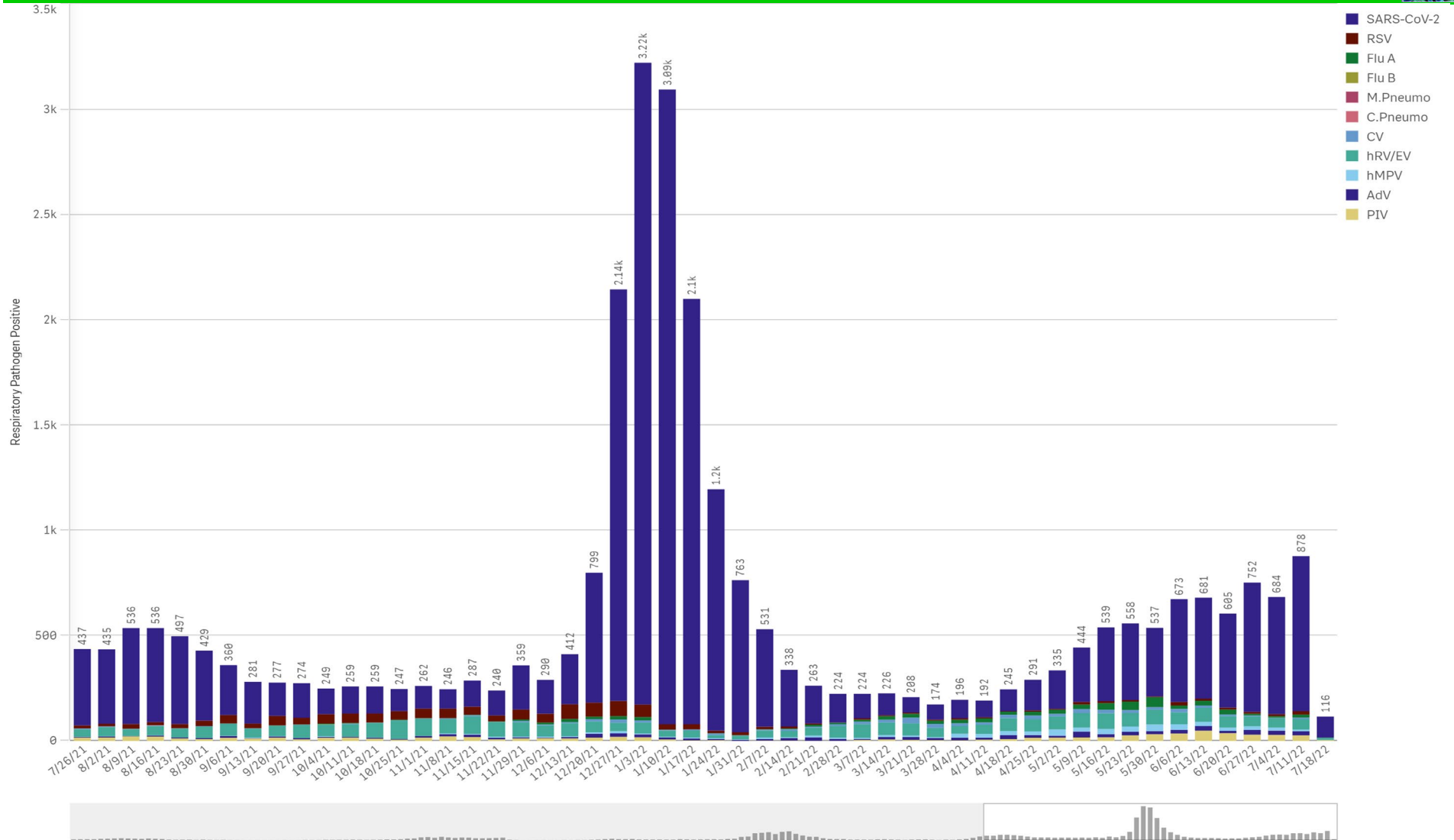
Component Group	Q	Pathogen Positive Previous Week 7/11/2022 - 7/17/2022	Pathogen Tests Previous Week 7/11/2022 - 7/17/2022	Previous Week Positive Rate	Pathogen Positive Current WTD* 7/18/2022 - 7/24/2022	Pathogen Tests Current WTD* 7/18/2022 - 7/24/2022	Current WTD** Positive Rate	Pathogen Tested YTD**	Pathogen Positive YTD**	Positive Rate YTD**
<b>Totals</b>		<b>857</b>	<b>4,958</b>	<b>17.3%</b>	<b>115</b>	<b>678</b>	<b>17.0%</b>	<b>253,541</b>	<b>25,790</b>	<b>10%</b>
COVID-19(SARS-CoV-2,PCR)		742	4,134	17.9%	101	563	17.9%	225,807	20,996	9%
Human Rhinovirus/Enterovirus		50	255	19.6%	9	35	25.7%	7,916	2,247	28%
Parainfluenza		27	255	10.6%	4	35	11.4%	7,916	596	8%
Adenovirus		19	255	7.5%	0	35	0.0%	7,916	478	6%
RSV		16	301	5.3%	0	44	0.0%	10,374	940	9%
Human Metapneumovirus		8	255	3.1%	1	35	2.9%	7,916	426	5%
Influenza A		8	307	2.6%	1	44	2.3%	12,088	338	3%
Coronavirus(other than COVID-19)		7	255	2.7%	0	35	0.0%	7,916	365	5%
B.Pertussis/Parapertussis		0	13	0.0%	0	1	0.0%	779	0	0%
Chlamydia Pneumoniae		0	255	0.0%	0	35	0.0%	7,916	0	0%
Enterovirus,CSF		0	0	-	0	0	-	29	0	0%
Influenza B		0	307	0.0%	0	44	0.0%	12,088	2	0%
Mycoplasma Pneumoniae		0	255	0.0%	0	35	0.0%	7,916	0	0%

\*Current WTD may not be a completed week, depending on when the data is being reviewed. Refer to data date on page header for reference.

\*\*YTD for this data starts on the first Monday in October.

\*Current WTD may not be a complete week, depending on when data is being reviewed. Refer to data date on page header for reference.  
\*\*YTD for this data starts on the first Monday in October.

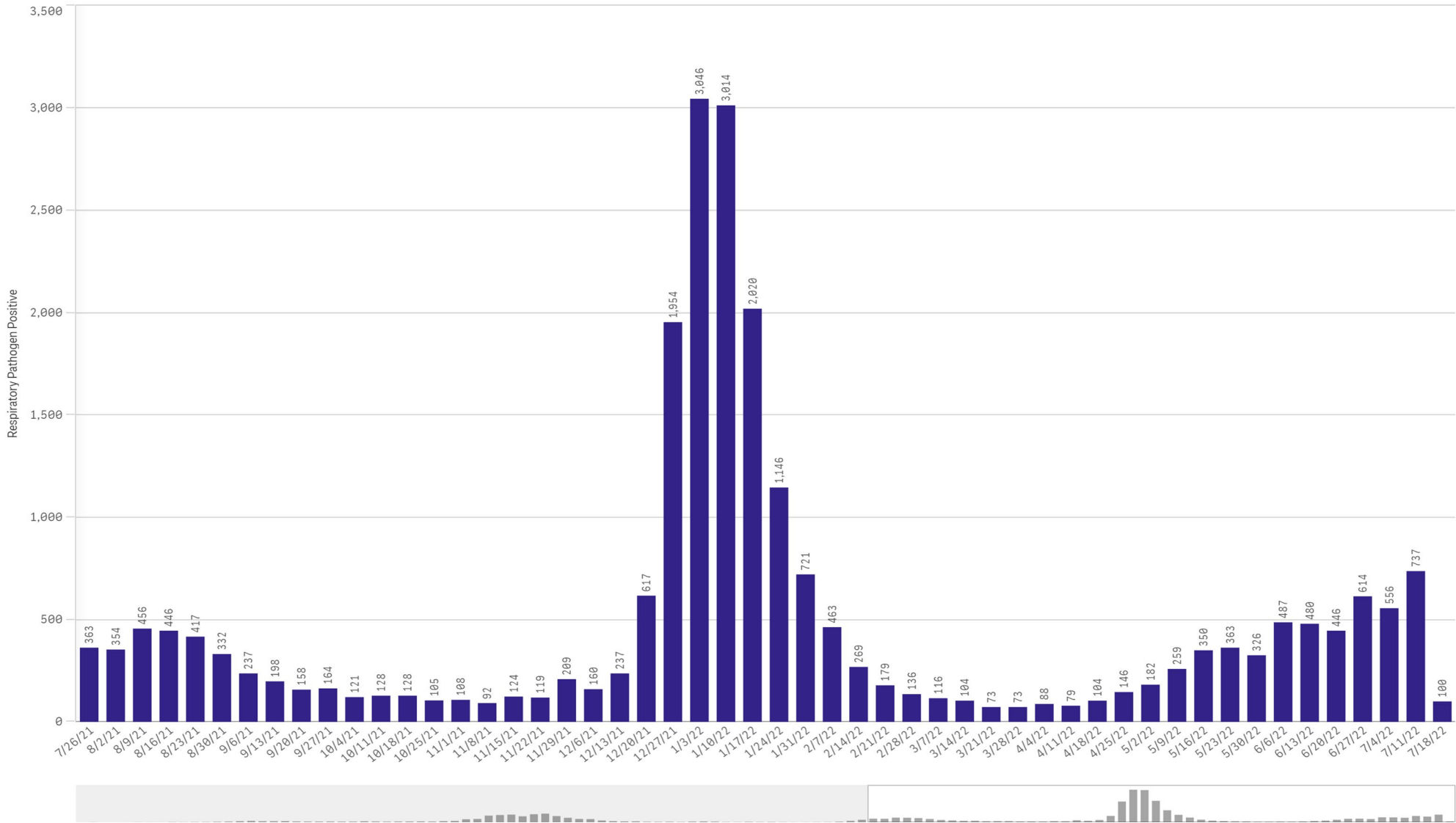
All Positive Respiratory Pathogens by Week Start - Data as of 7/18/2022



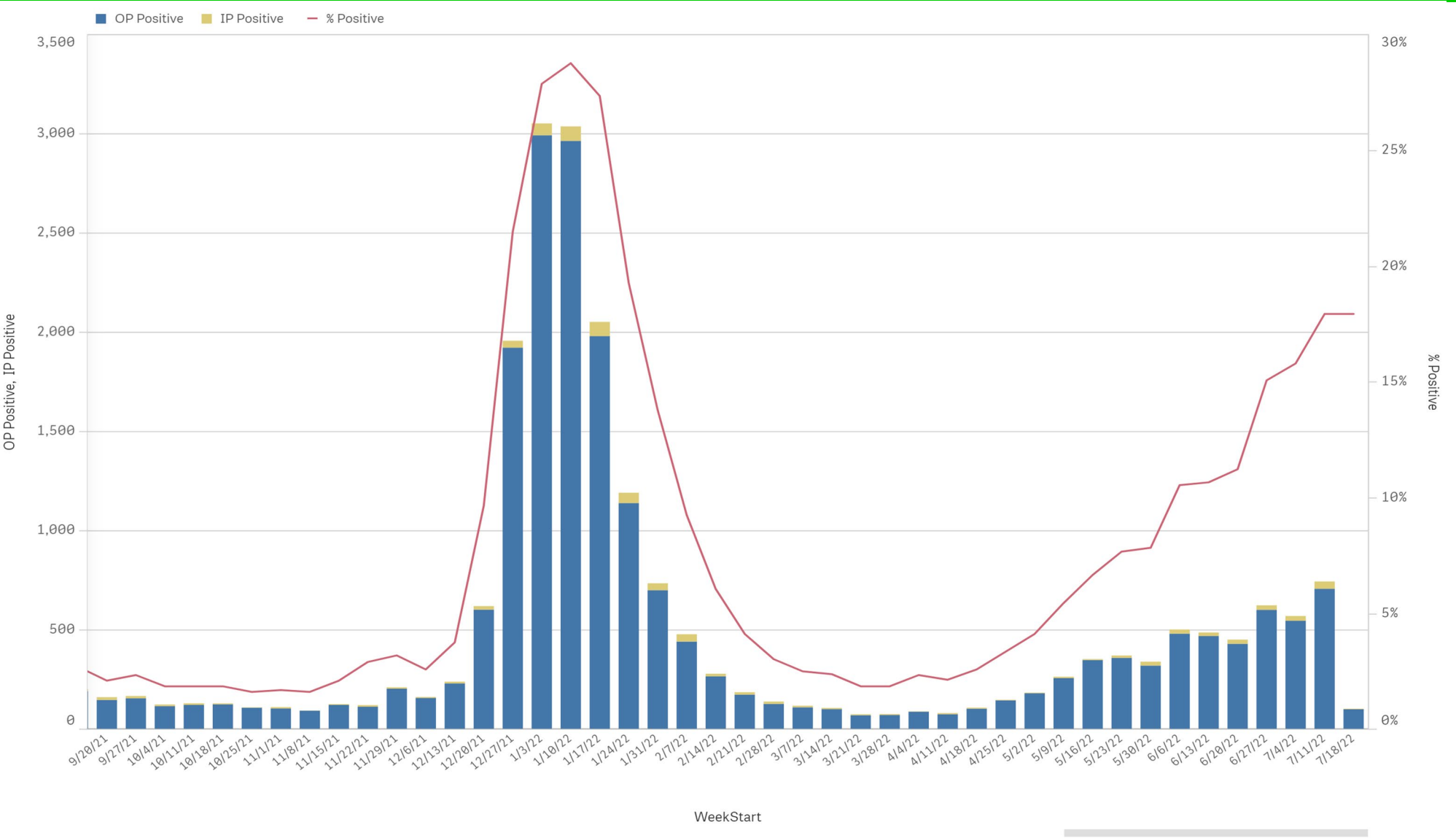
Positive SARS-CoV-2 Pathogens by Week Start - Data as of 7/18/2022



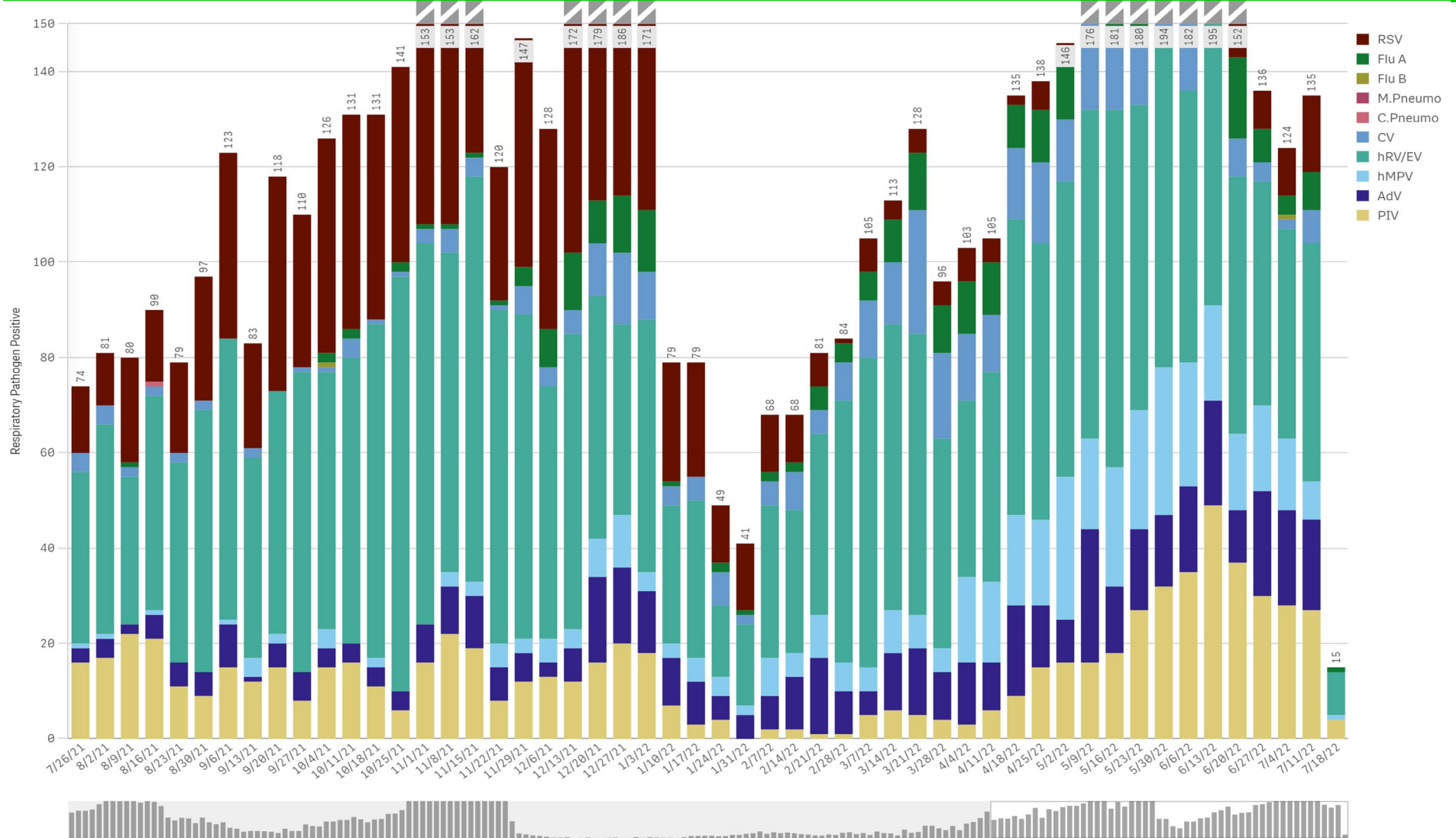
SARS-CoV-2 Positive Cases



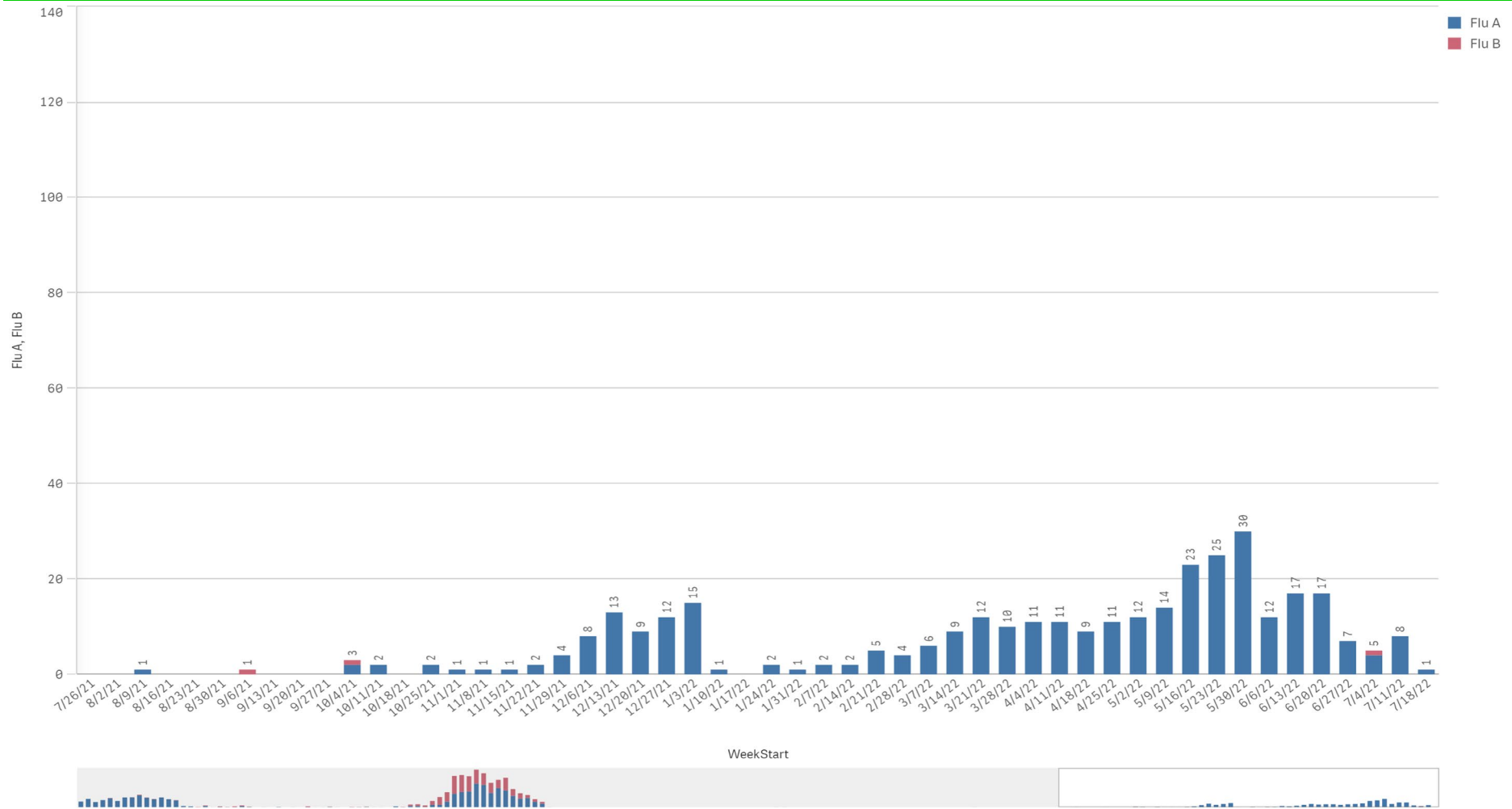
SARS-CoV-2 Positive by Encounter Type - Data as of 7/18/2022



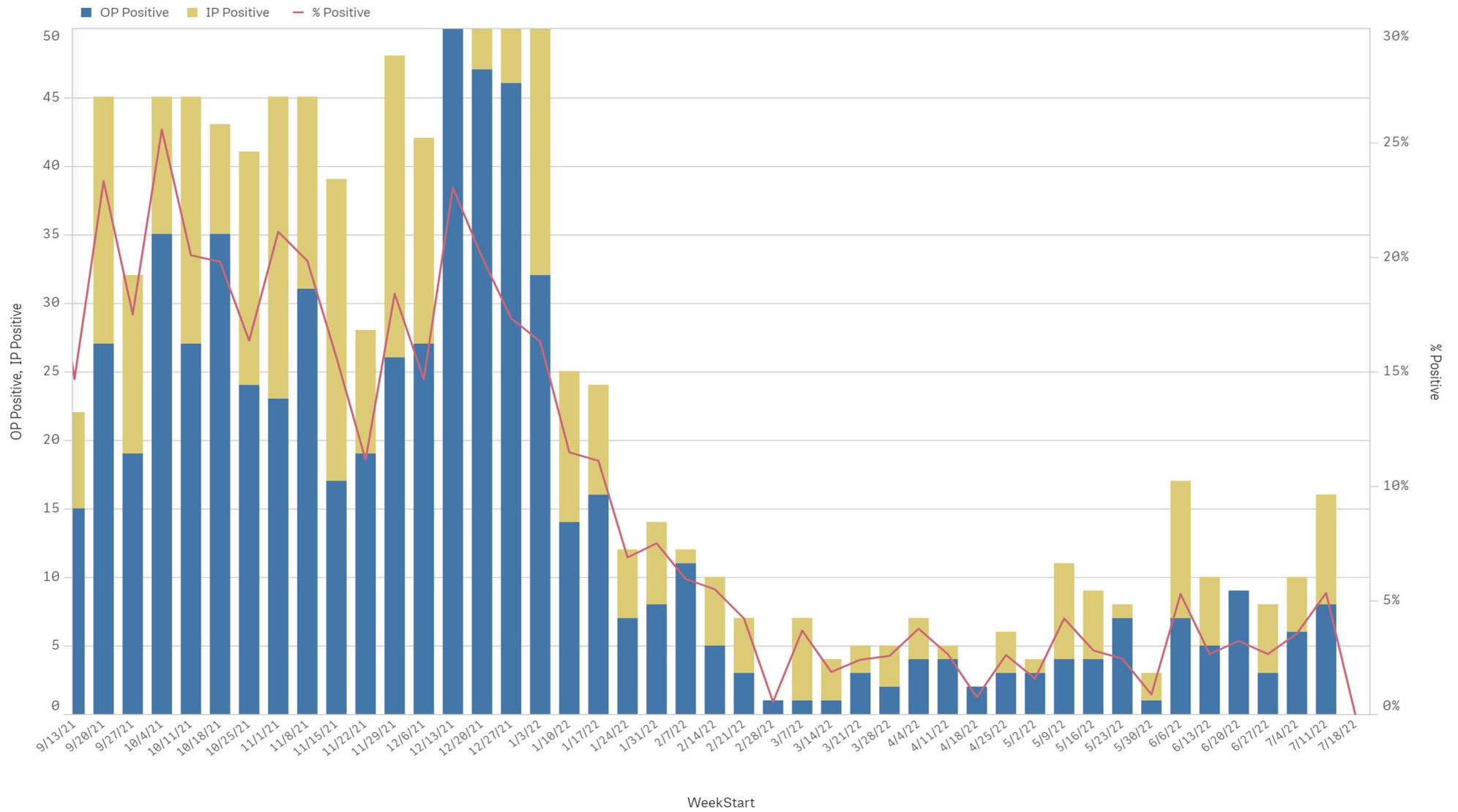
Positive Respiratory Pathogens by Week Start (excl SARS) - Data as of 7/18/2022



Influenza A & B Positive by Week Start - Data as of 7/18/2022



RSV - Data as of 7/18/2022

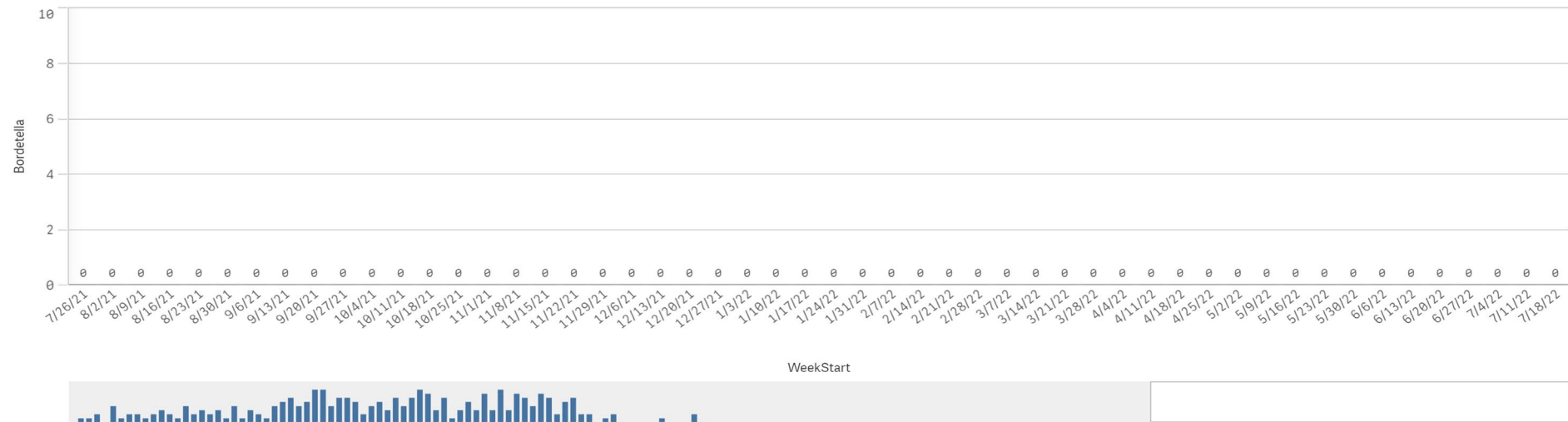




B. Pert/Parap Positives by Week Start - Data as of 7/18/2022



B. Pertussis/Parapertussis Positives by Week



B.pertussis / B.parapertussis % Positive by Week



Enterovirus by Week Start - Data as of 7/18/2022



Enterovirus CSF Positive by Week

