

# Volume and Positive Rate

Volume and Positive Rate - Data as of \*\*YTD for this data starts on the first Monday in October.



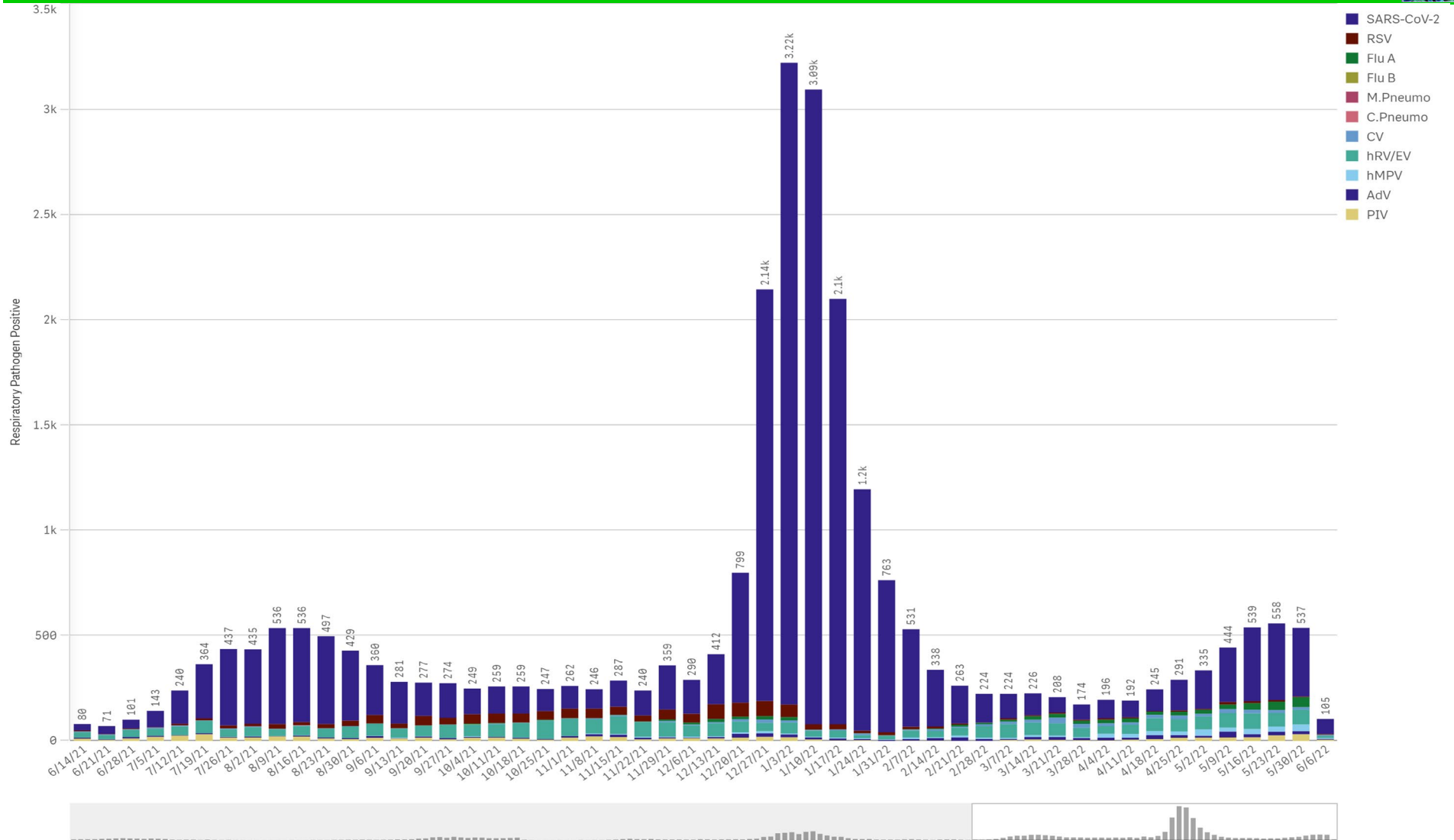
Component Group	Q	Pathogen Positive Previous Week 5/30/2022 - 6/5/2022	Pathogen Tests Previous Week 5/30/2022 - 6/5/2022	Previous Week Positive Rate	Pathogen Positive Current WTD* 6/6/2022 - 6/12/2022	Pathogen Tests Current WTD* 6/6/2022 - 6/12/2022	Current WTD** Positive Rate	Pathogen Tested YTD**	Pathogen Positive YTD**	Positive Rate YTD**
<b>Totals</b>		<b>503</b>	<b>5,137</b>	<b>9.8%</b>	<b>102</b>	<b>805</b>	<b>12.7%</b>	<b>223,640</b>	<b>21,616</b>	<b>10%</b>
COVID-19(SARS-CoV-2,PCR)		338	4,313	7.8%	75	690	10.9%	200,779	17,604	9%
Human Rhinovirus/Enterovirus		71	236	30.1%	11	32	34.4%	6,459	1,930	30%
Parainfluenza		32	236	13.6%	6	32	18.8%	6,459	392	6%
Human Metapneumovirus		31	236	13.1%	4	32	12.5%	6,459	326	5%
Influenza A		30	373	8.0%	1	48	2.1%	10,097	273	3%
Adenovirus		15	236	6.4%	4	32	12.5%	6,459	370	6%
Coronavirus(other than COVID-19)		12	236	5.1%	4	32	12.5%	6,459	321	5%
RSV		3	335	0.9%	3	41	7.3%	8,506	873	10%
B.Pertussis/Parapertussis		0	18	0.0%	0	9	0.0%	690	0	0%
Chlamydia Pneumoniae		0	236	0.0%	0	32	0.0%	6,459	0	0%
Enterovirus,CSF		0	0	-	0	1	0.0%	24	0	0%
Influenza B		0	373	0.0%	0	48	0.0%	10,097	1	0%
Mycoplasma Pneumoniae		0	236	0.0%	0	32	0.0%	6,459	0	0%

\*Current WTD may not be a completed week, depending on when the data is being reviewed. Refer to data date on page header for reference.

\*\*YTD for this data starts on the first Monday in October.

\*Current WTD may not be a complete week, depending on when data is being reviewed. Refer to data date on page header for reference.  
\*\*YTD for this data starts on the first Monday in October.

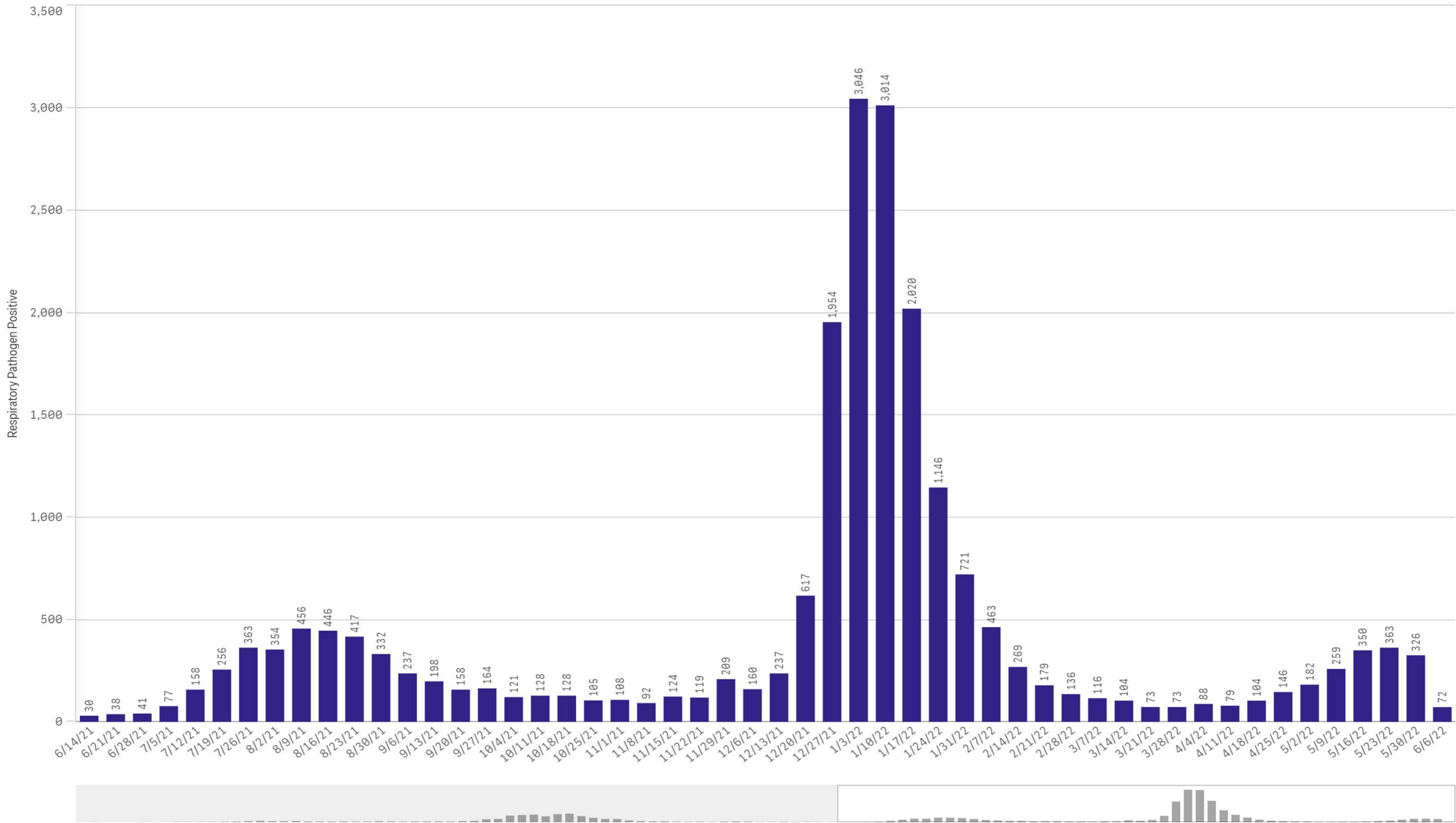
All Positive Respiratory Pathogens by Week Start - Data as of 6/6/2022



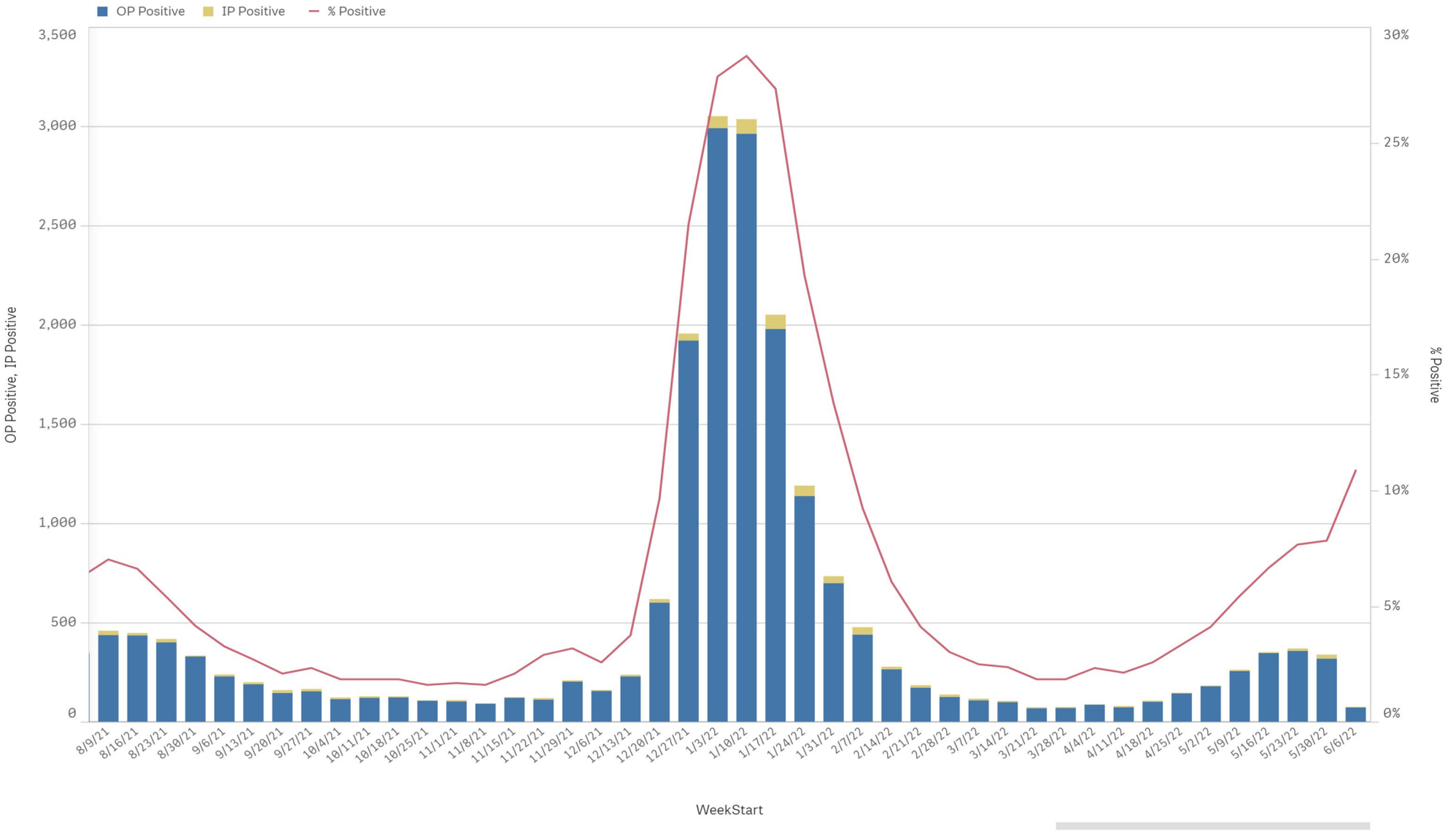
Positive SARS-CoV-2 Pathogens by Week Start - Data as of 6/6/2022



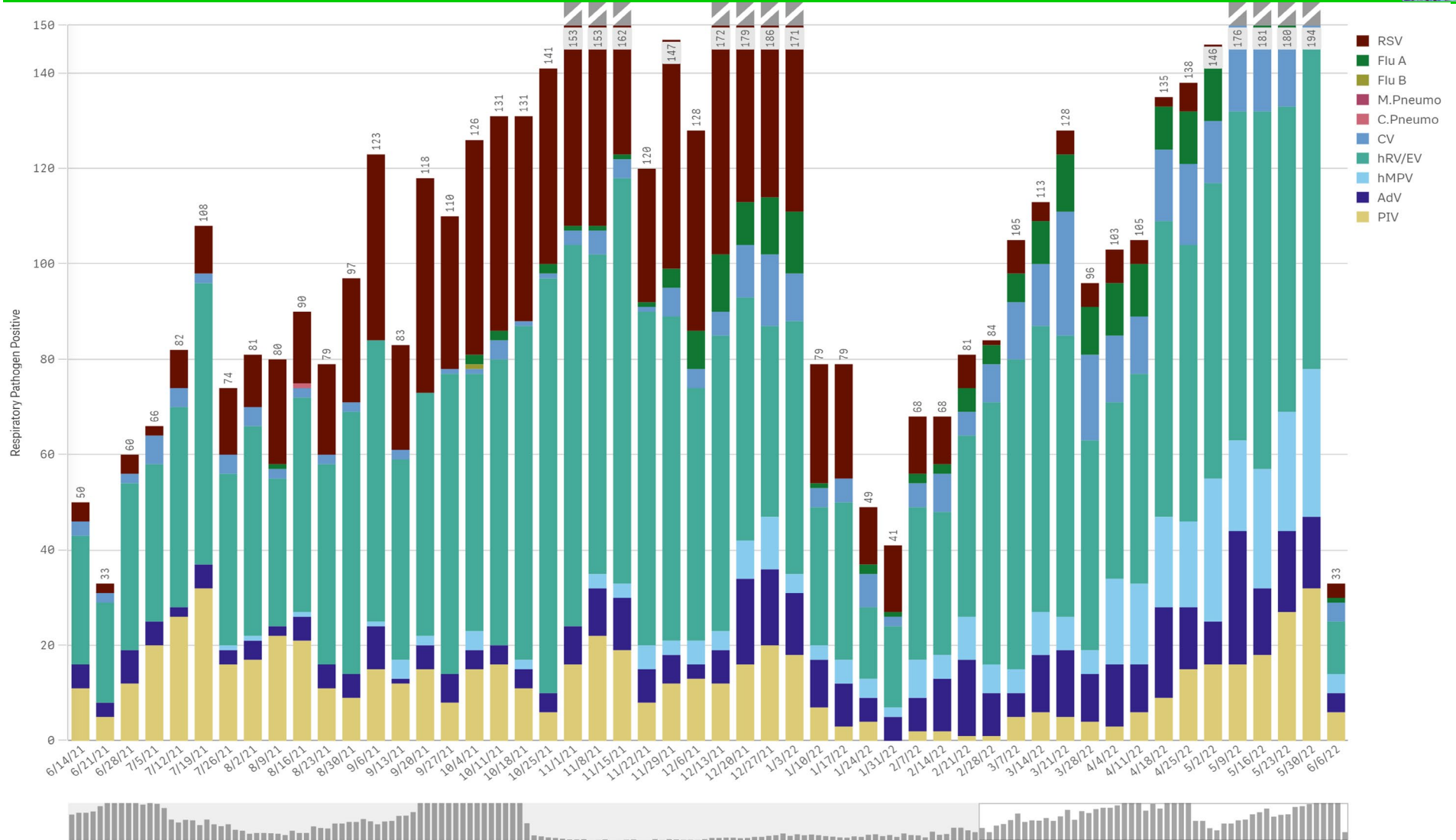
SARS-CoV-2 Positive Cases



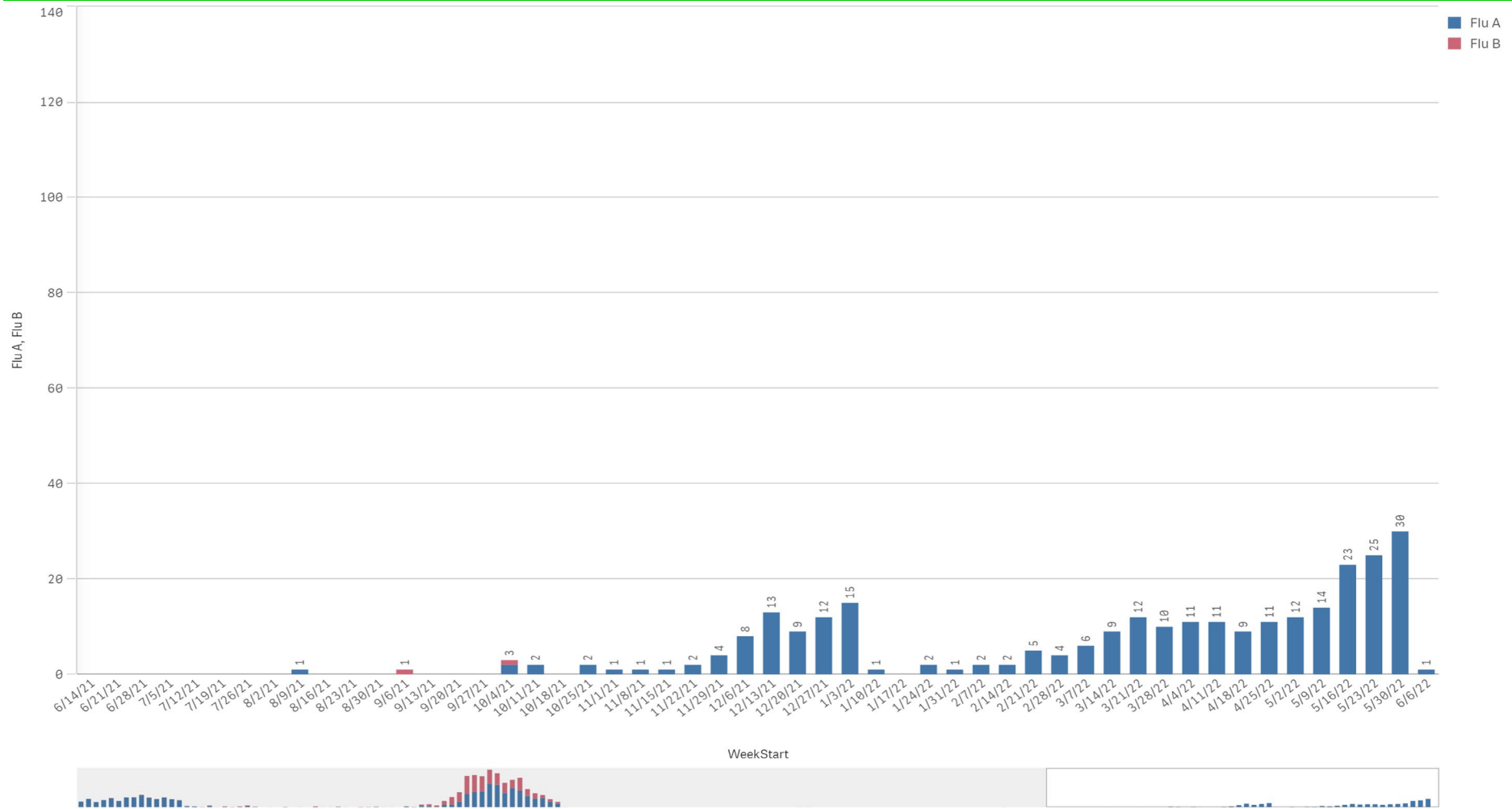
SARS-CoV-2 Positive by Encounter Type - Data as of 6/6/2022



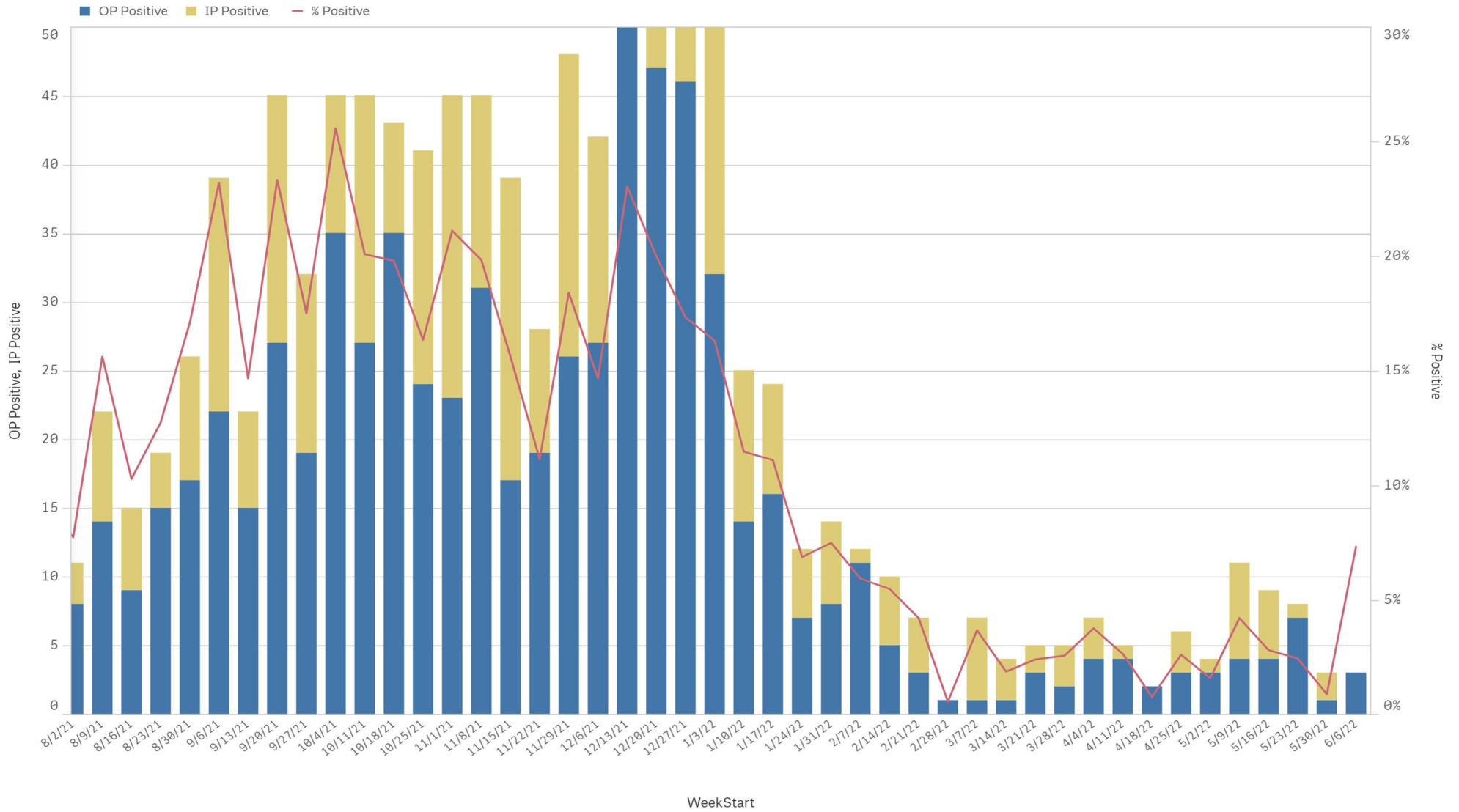
Positive Respiratory Pathogens by Week Start (excl SARS) - Data as of 6/6/2022



Influenza A & B Positive by Week Start - Data as of 6/6/2022



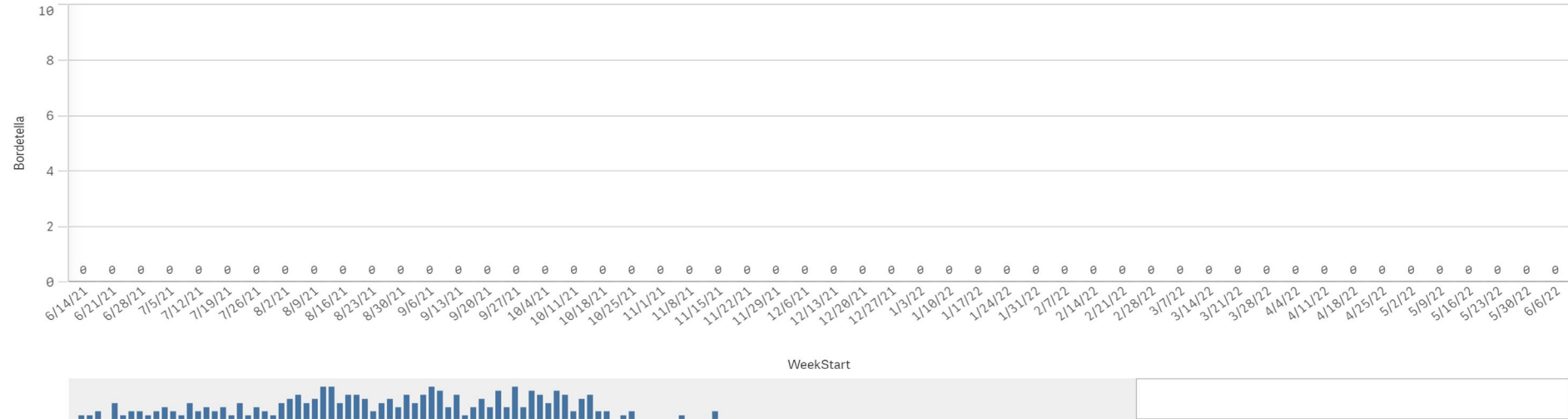
RSV - Data as of 6/6/2022



B. Pert/Parap Positives by Week Start - Data as of 6/6/2022



B. Pertussis/Parapertussis Positives by Week



B.pertussis / B.parapertussis % Positive by Week



Enterovirus by Week Start - Data as of 6/6/2022

Enterovirus CSF Positive by Week

