

Volume and Positive Rate

Volume and Positive Rate - Data as of **YTD for this data starts on the first Monday in October.



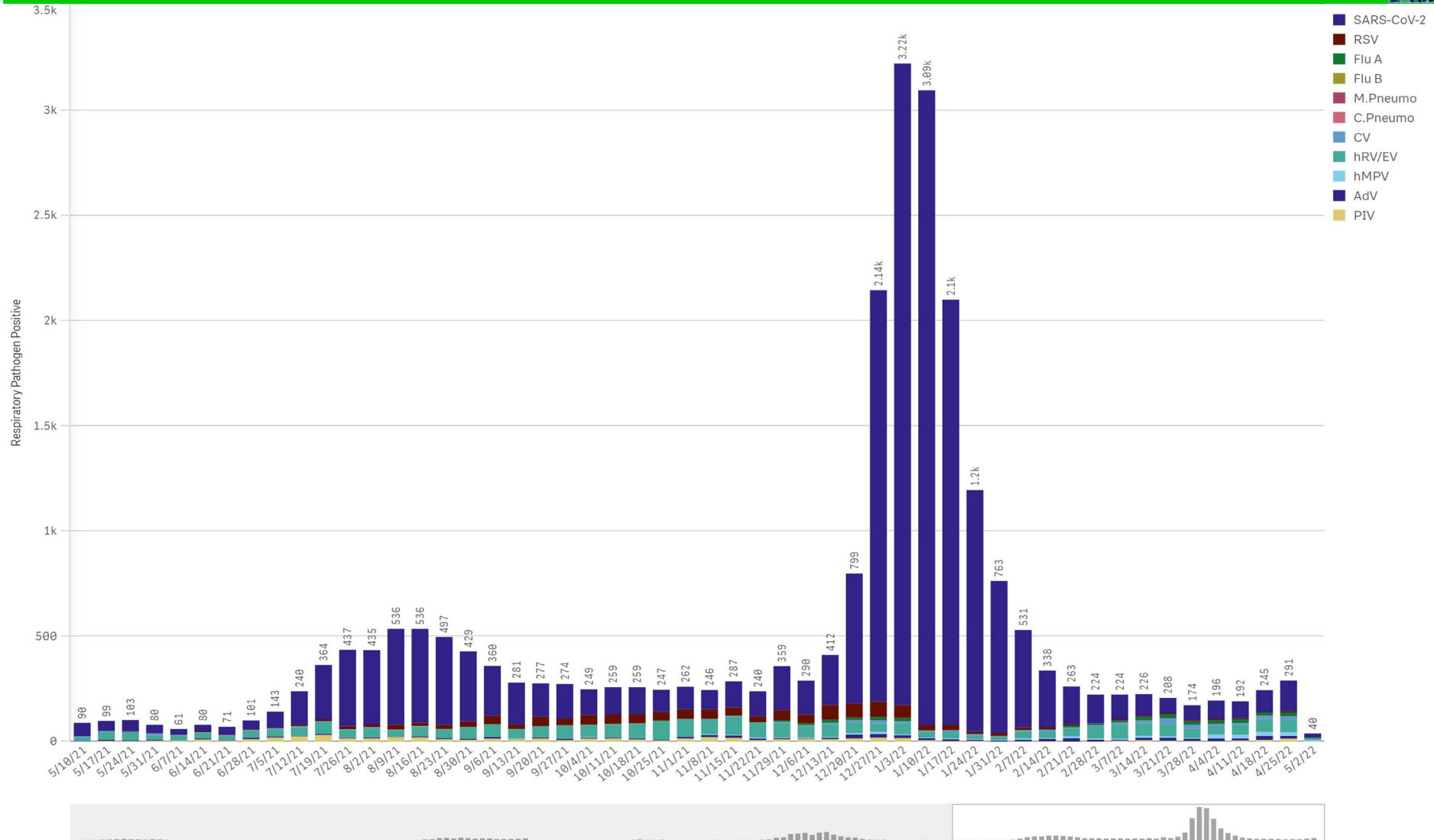
Component Group	Q	Pathogen Positive Previous Week 4/25/2022 - 5/1/2022	Pathogen Tests Previous Week 4/25/2022 - 5/1/2022	Previous Week Positive Rate	Pathogen Positive Current WTD* 5/2/2022 - 5/8/2022	Pathogen Tests Current WTD* 5/2/2022 - 5/8/2022	Current WTD** Positive Rate	Pathogen Tested YTD**	Pathogen Positive YTD**	Positive Rate YTD**
Totals		268	5,015	5.3%	37	556	6.7%	195,830	19,289	10%
COVID-19(SARS-CoV-2,PCR)		146	4,377	3.3%	20	472	4.2%	176,940	16,047	9%
Human Rhinovirus/Enterovirus		58	193	30.1%	7	25	28.0%	5,291	1,585	30%
Human Metapneumovirus		18	193	9.3%	5	25	20.0%	5,291	197	4%
Coronavirus(other than COVID-19)		17	193	8.8%	2	25	8.0%	5,291	244	5%
Parainfluenza		15	193	7.8%	3	25	12.0%	5,291	280	5%
Adenovirus		13	193	6.7%	0	25	0.0%	5,291	283	5%
Influenza A		11	254	4.3%	2	33	6.1%	8,455	170	2%
RSV		6	229	2.6%	0	33	0.0%	7,002	835	12%
B.Pertussis/Parapertussis		0	23	0.0%	0	1	0.0%	562	0	0%
Chlamydia Pneumoniae		0	193	0.0%	0	25	0.0%	5,291	0	0%
Enterovirus,CSF		0	0	-	0	0	-	20	0	0%
Influenza B		0	254	0.0%	0	33	0.0%	8,455	1	0%
Mycoplasma Pneumoniae		0	193	0.0%	0	25	0.0%	5,291	0	0%

*Current WTD may not be a completed week, depending on when the data is being reviewed. Refer to data date on page header for reference.

**YTD for this data starts on the first Monday in October.

*Current WTD may not be a complete week, depending on when data is being reviewed. Refer to data date on page header for reference.
**YTD for this data starts on the first Monday in October.

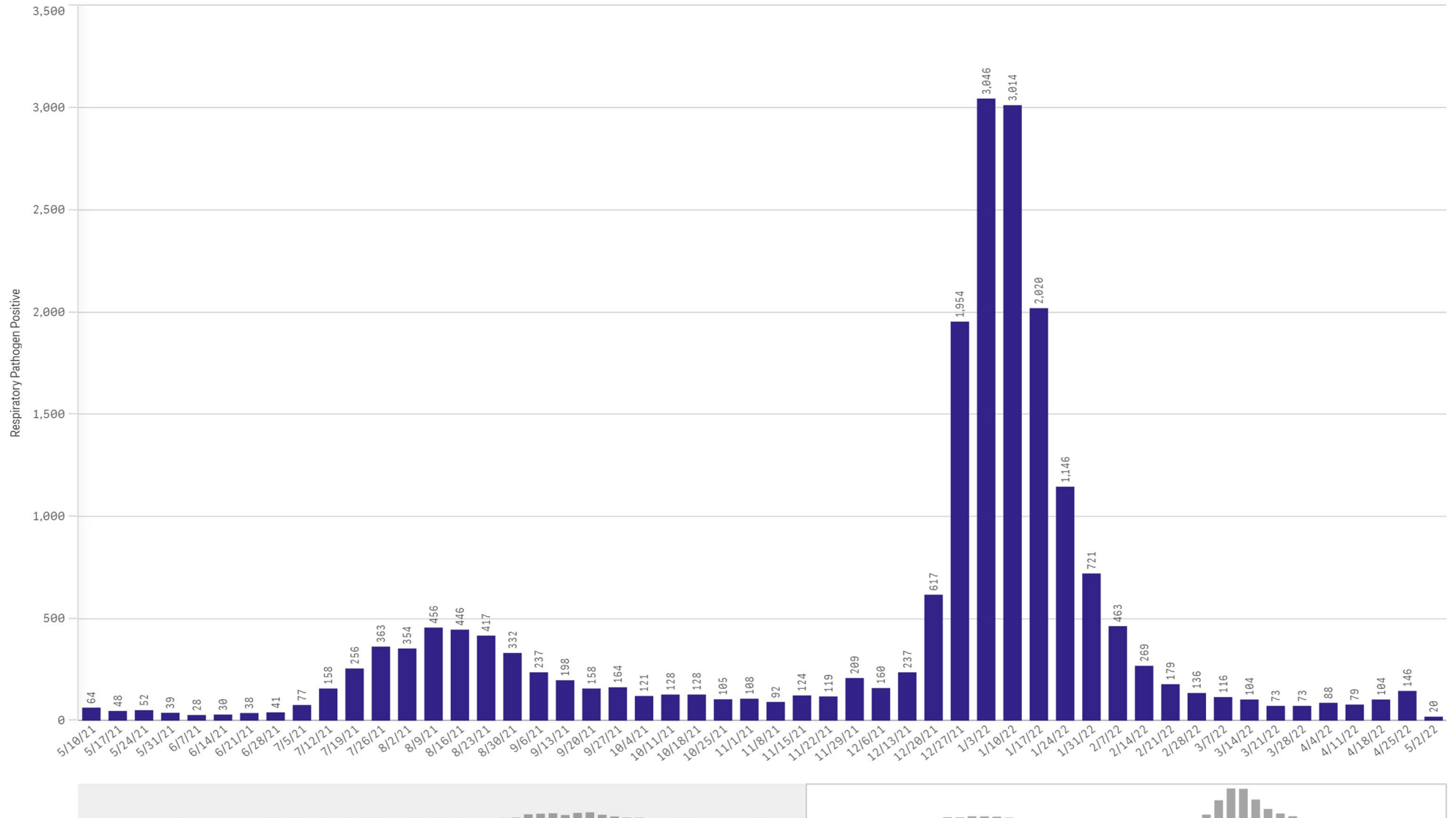
All Positive Respiratory Pathogens by Week Start - Data as of 5/2/2022



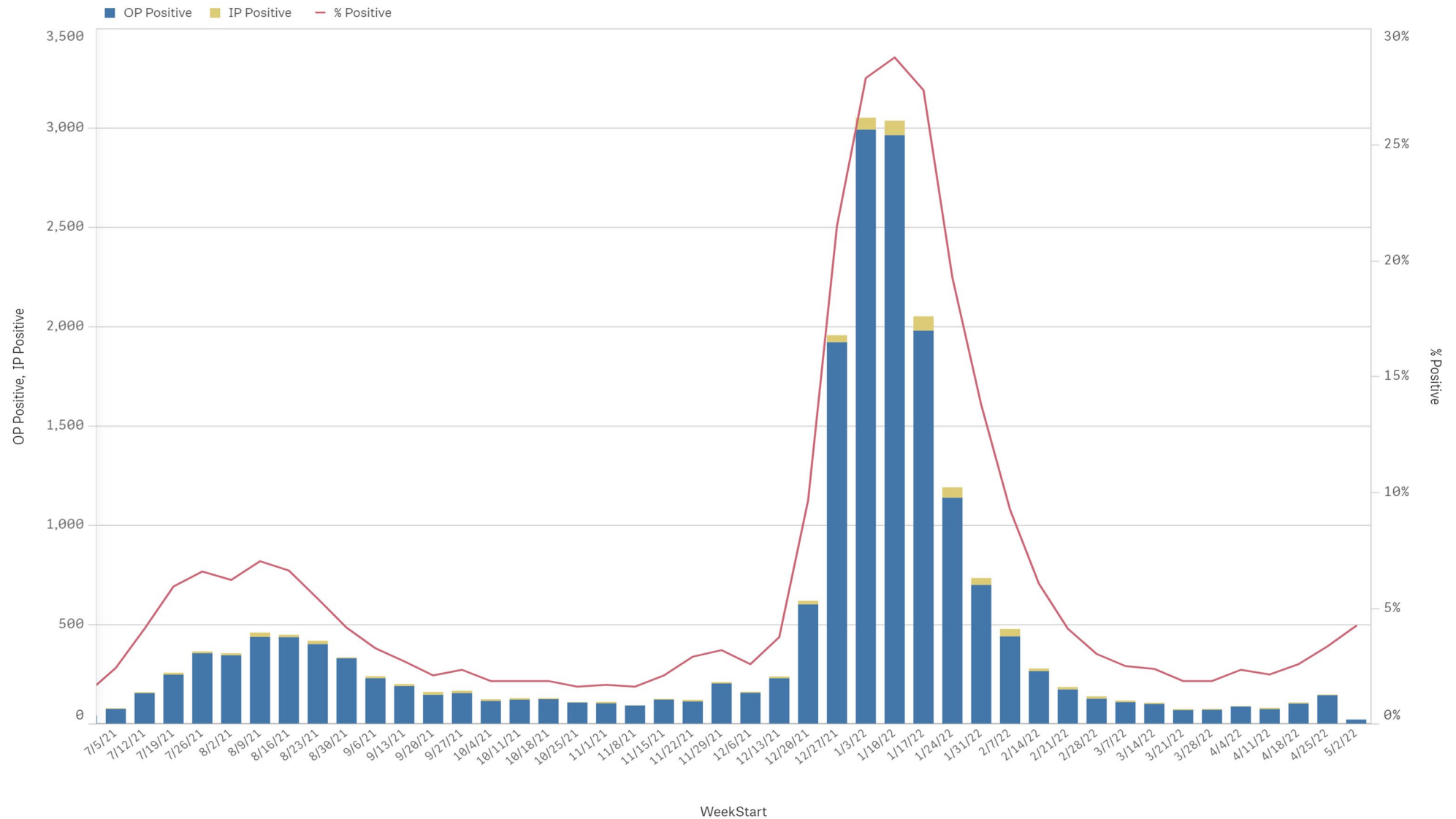
Positive SARS-CoV-2 Pathogens by Week Start - Data as of 5/2/2022



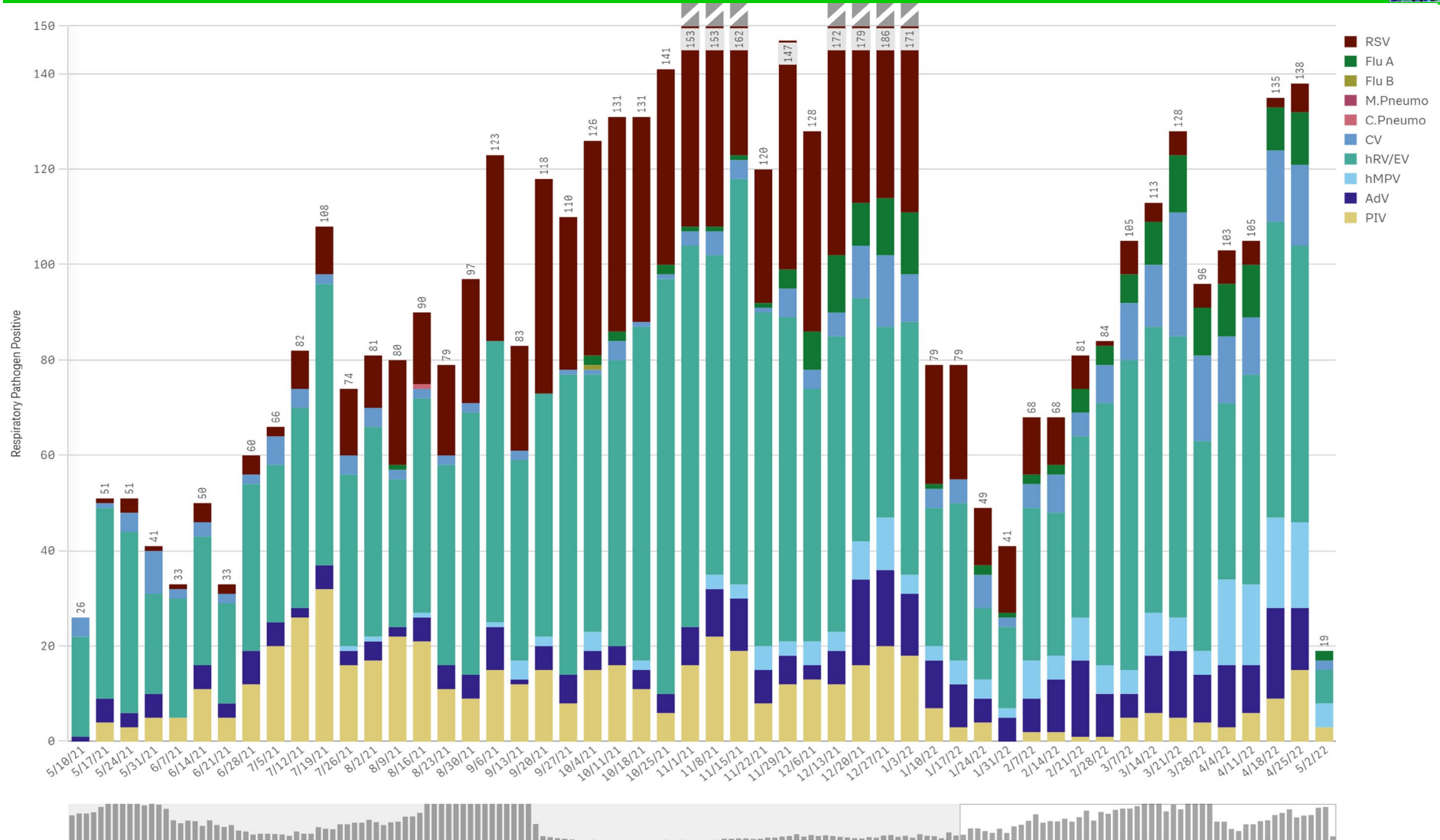
SARS-CoV-2 Positive Cases



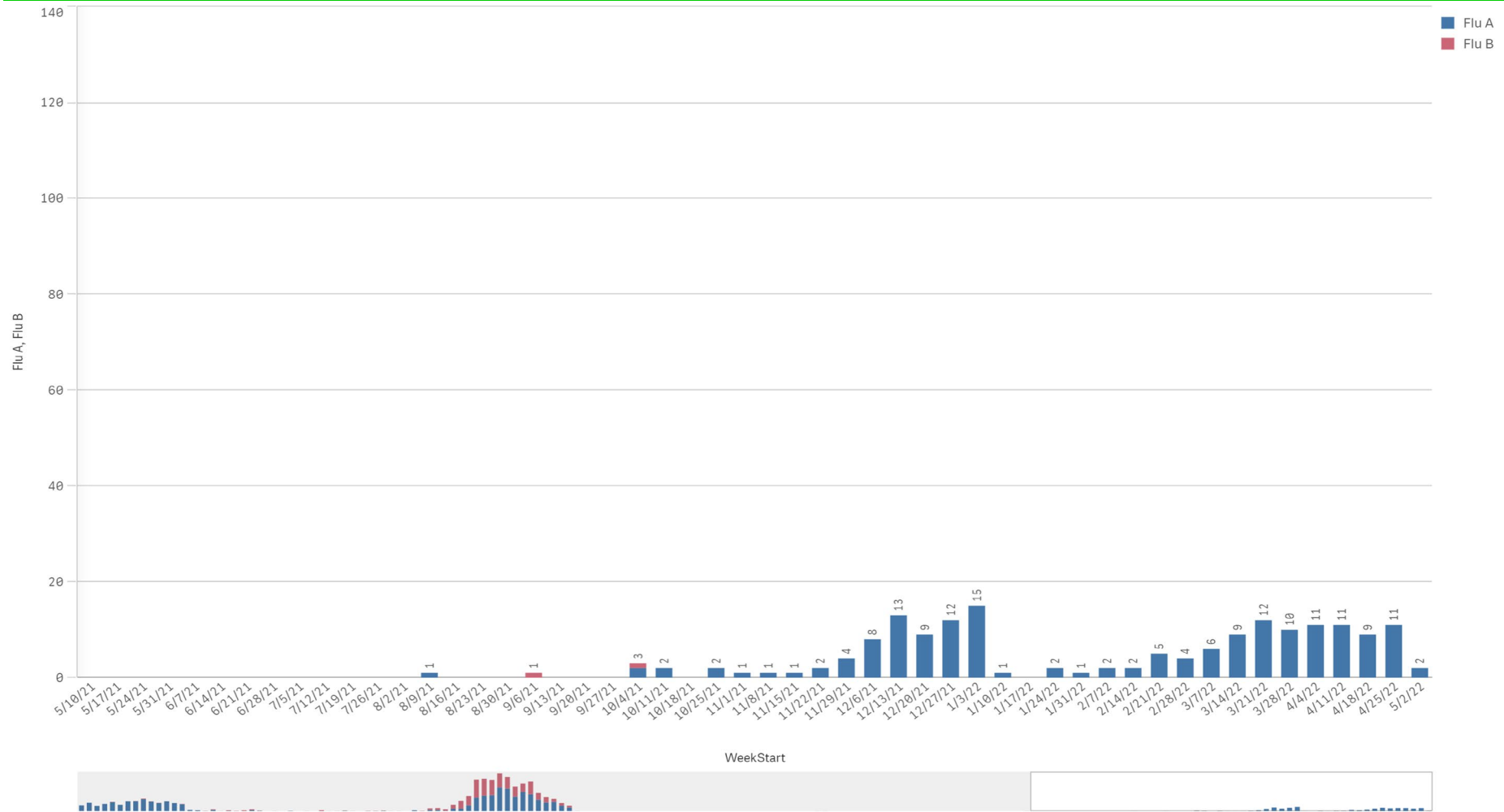
SARS-CoV-2 Positive by Encounter Type - Data as of 5/2/2022



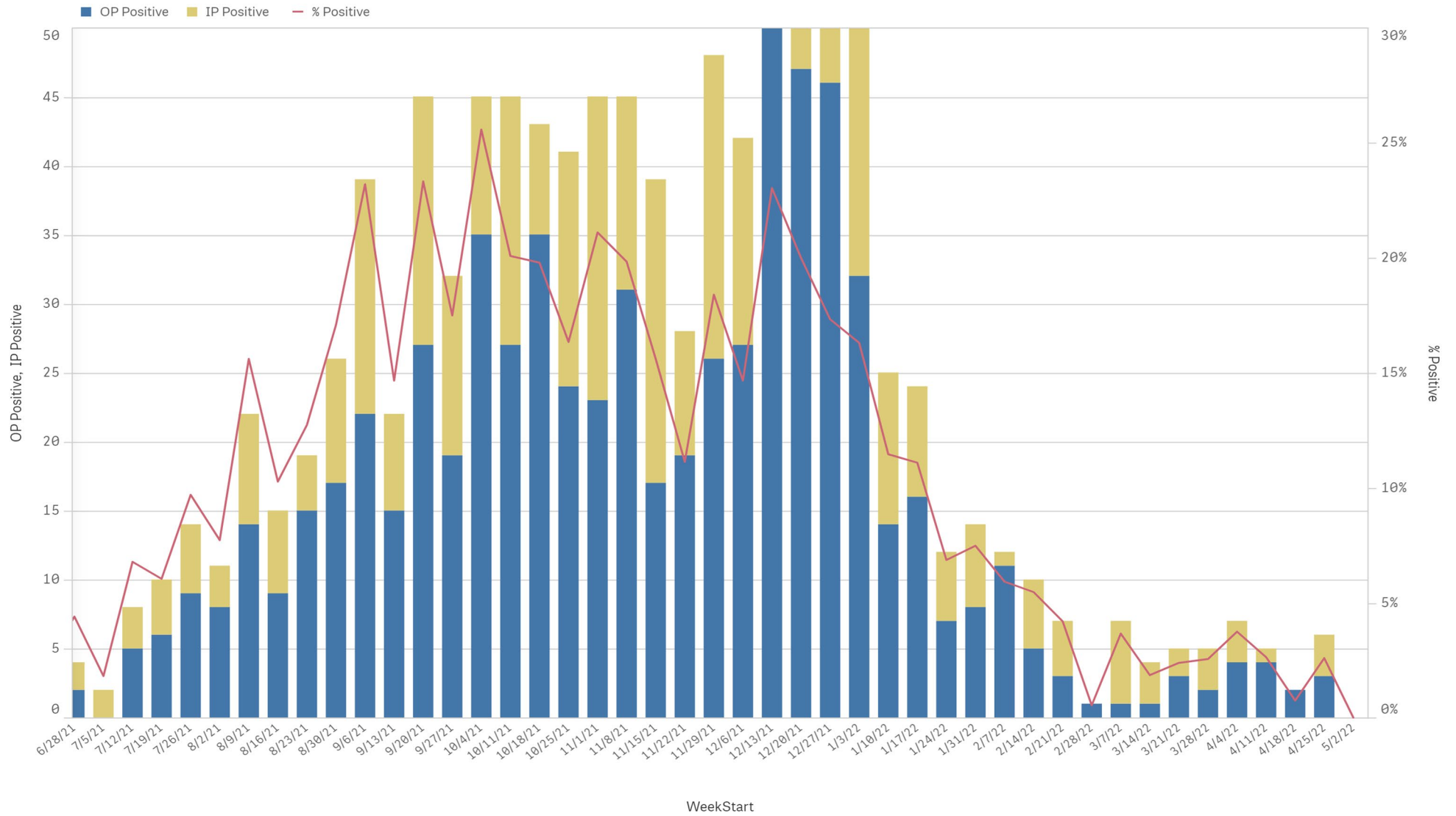
Positive Respiratory Pathogens by Week Start (excl SARS) - Data as of 5/2/2022



Influenza A & B Positive by Week Start - Data as of 5/2/2022



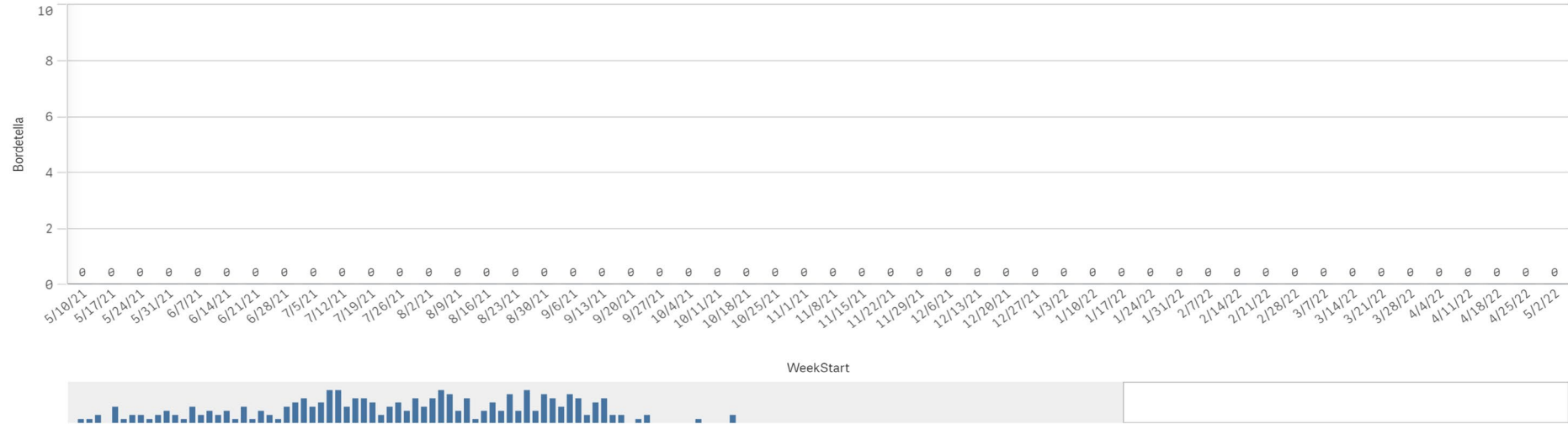
RSV - Data as of 5/2/2022



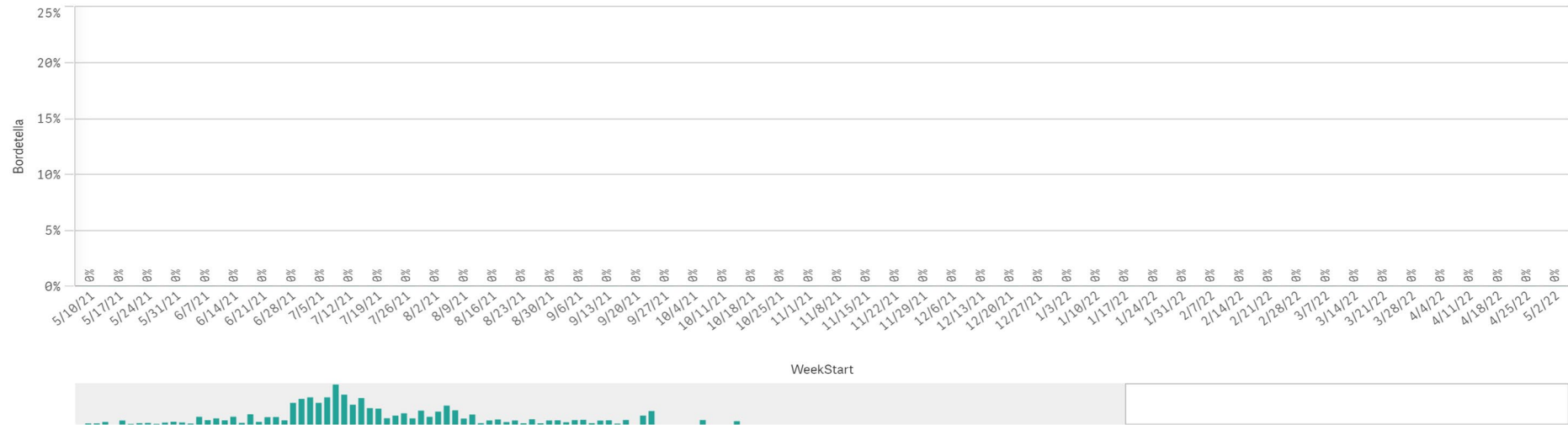
B. Pert/Parap Positives by Week Start - Data as of 5/2/2022



B. Pertussis/Parapertussis Positives by Week



B.pertussis / B.parapertussis % Positive by Week



Enterovirus by Week Start - Data as of 5/2/2022



Enterovirus CSF Positive by Week

