

Volume and Positive Rate

Volume and Positive Rate - Data as of **YTD for this data starts on the first Monday in October.



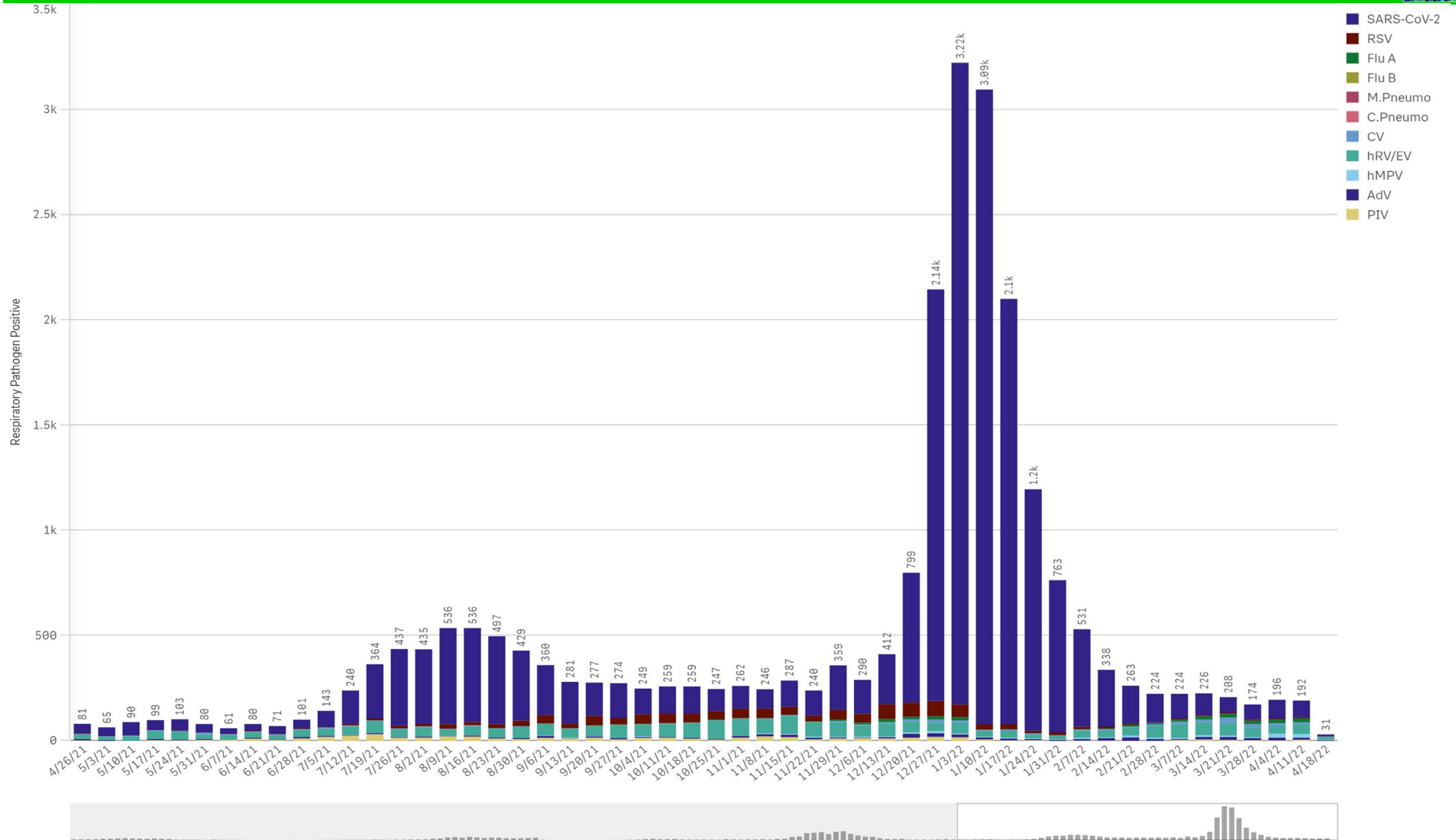
Component Group	Q	Pathogen Positive Previous Week 4/11/2022 - 4/17/2022	Pathogen Tests Previous Week 4/11/2022 - 4/17/2022	Previous Week Positive Rate	Pathogen Positive Current WTD* 4/18/2022 - 4/24/2022	Pathogen Tests Current WTD* 4/18/2022 - 4/24/2022	Current WTD** Positive Rate	Pathogen Tested YTD**	Pathogen Positive YTD**	Positive Rate YTD**
Totals		171	4,190	4.1%	30	538	5.6%	186,008	18,791	10%
COVID-19(SARS-CoV-2,PCR)		79	3,687	2.1%	9	429	2.1%	168,419	15,784	9%
Human Rhinovirus/Enterovirus		44	148	29.7%	10	34	29.4%	4,900	1,468	30%
Human Metapneumovirus		17	148	11.5%	2	34	5.9%	4,900	157	3%
Coronavirus(other than COVID-19)		12	148	8.1%	4	34	11.8%	4,900	214	4%
Influenza A		11	200	5.5%	1	40	2.5%	7,934	149	2%
Adenovirus		10	148	6.8%	3	34	8.8%	4,900	254	5%
Parainfluenza		6	148	4.1%	1	34	2.9%	4,900	254	5%
RSV		5	188	2.7%	1	38	2.6%	6,521	828	13%
B.Pertussis/Parapertussis		0	19	0.0%	0	3	0.0%	525	0	0%
Chlamydia Pneumoniae		0	148	0.0%	0	34	0.0%	4,900	0	0%
Enterovirus,CSF		0	0	-	0	0	-	19	0	0%
Influenza B		0	200	0.0%	0	40	0.0%	7,934	1	0%
Mycoplasma Pneumoniae		0	148	0.0%	0	34	0.0%	4,900	0	0%

*Current WTD may not be a completed week, depending on when the data is being reviewed. Refer to data date on page header for reference.

**YTD for this data starts on the first Monday in October.

*Current WTD may not be a complete week, depending on when data is being reviewed. Refer to data date on page header for reference.
**YTD for this data starts on the first Monday in October.

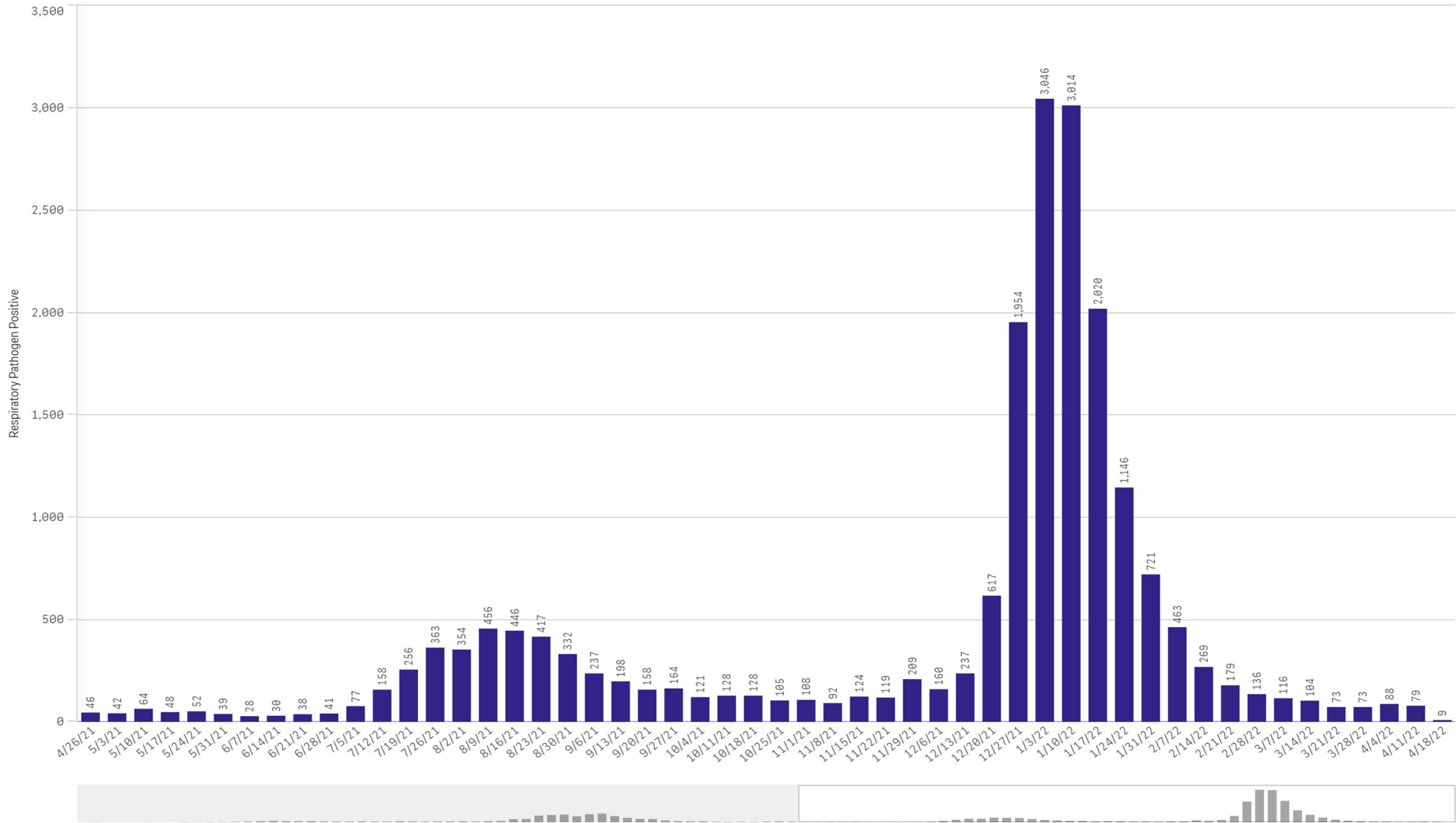
All Positive Respiratory Pathogens by Week Start - Data as of 4/18/2022



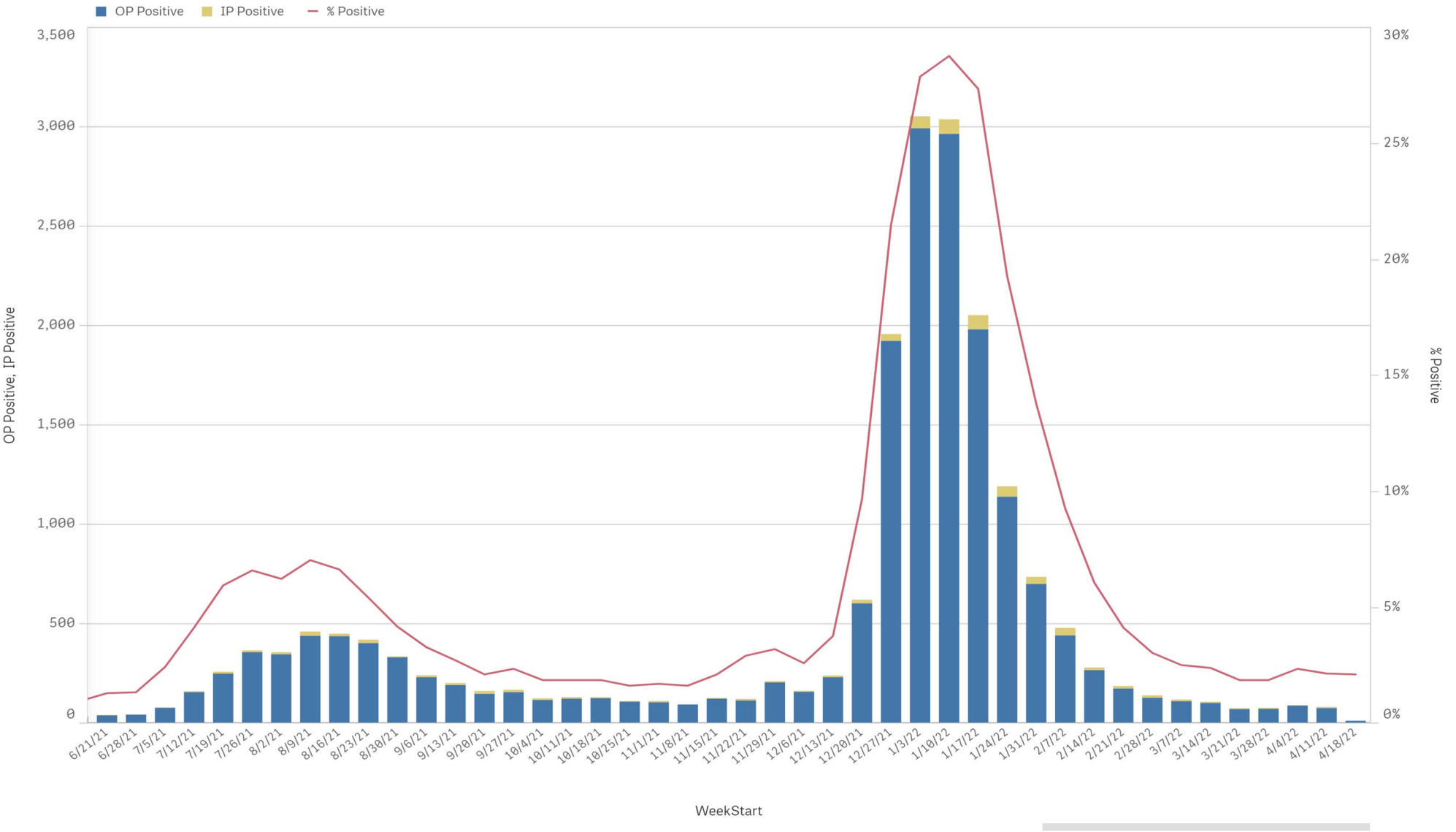
Positive SARS-CoV-2 Pathogens by Week Start - Data as of 4/18/2022



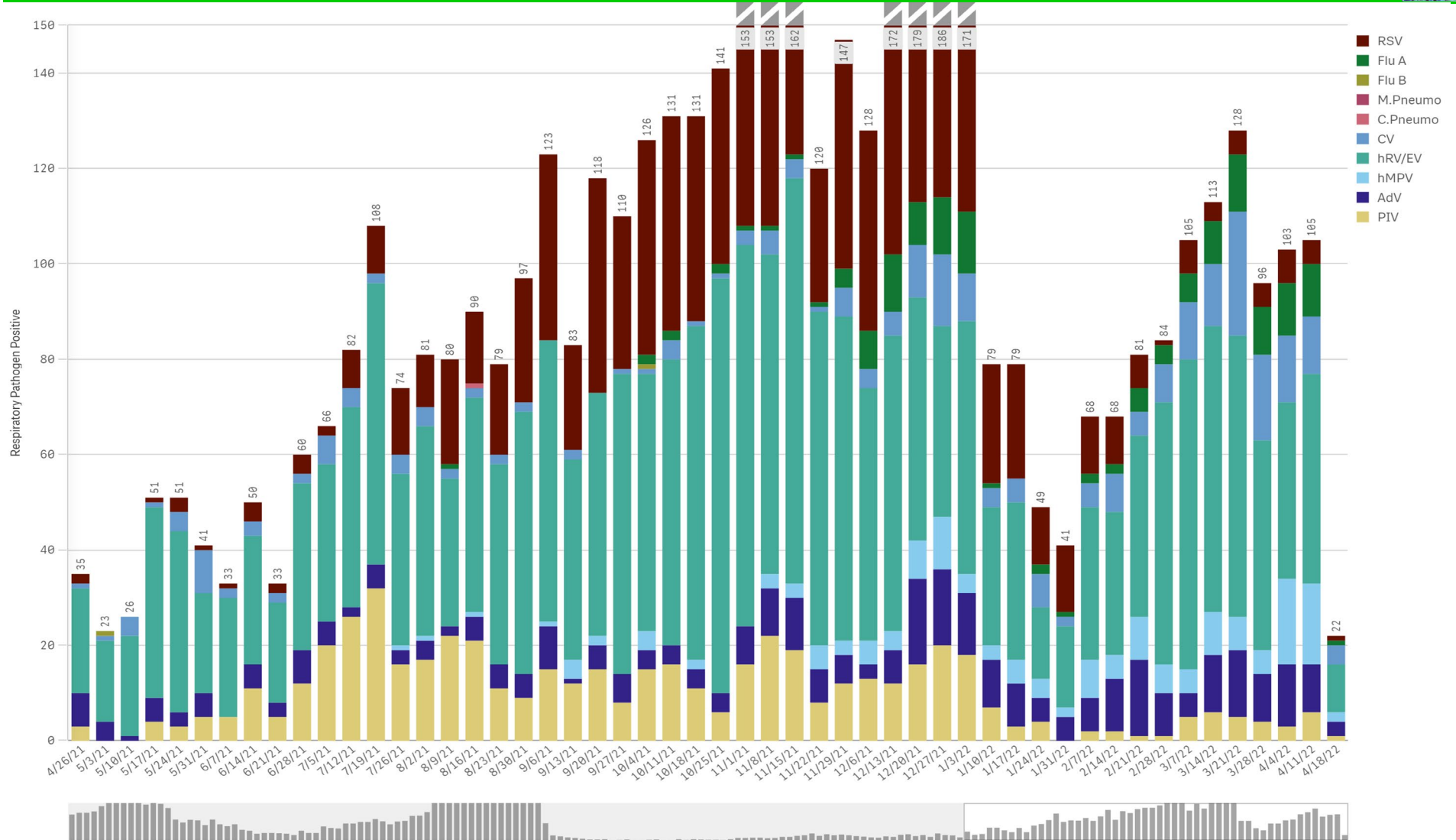
SARS-CoV-2 Positive Cases



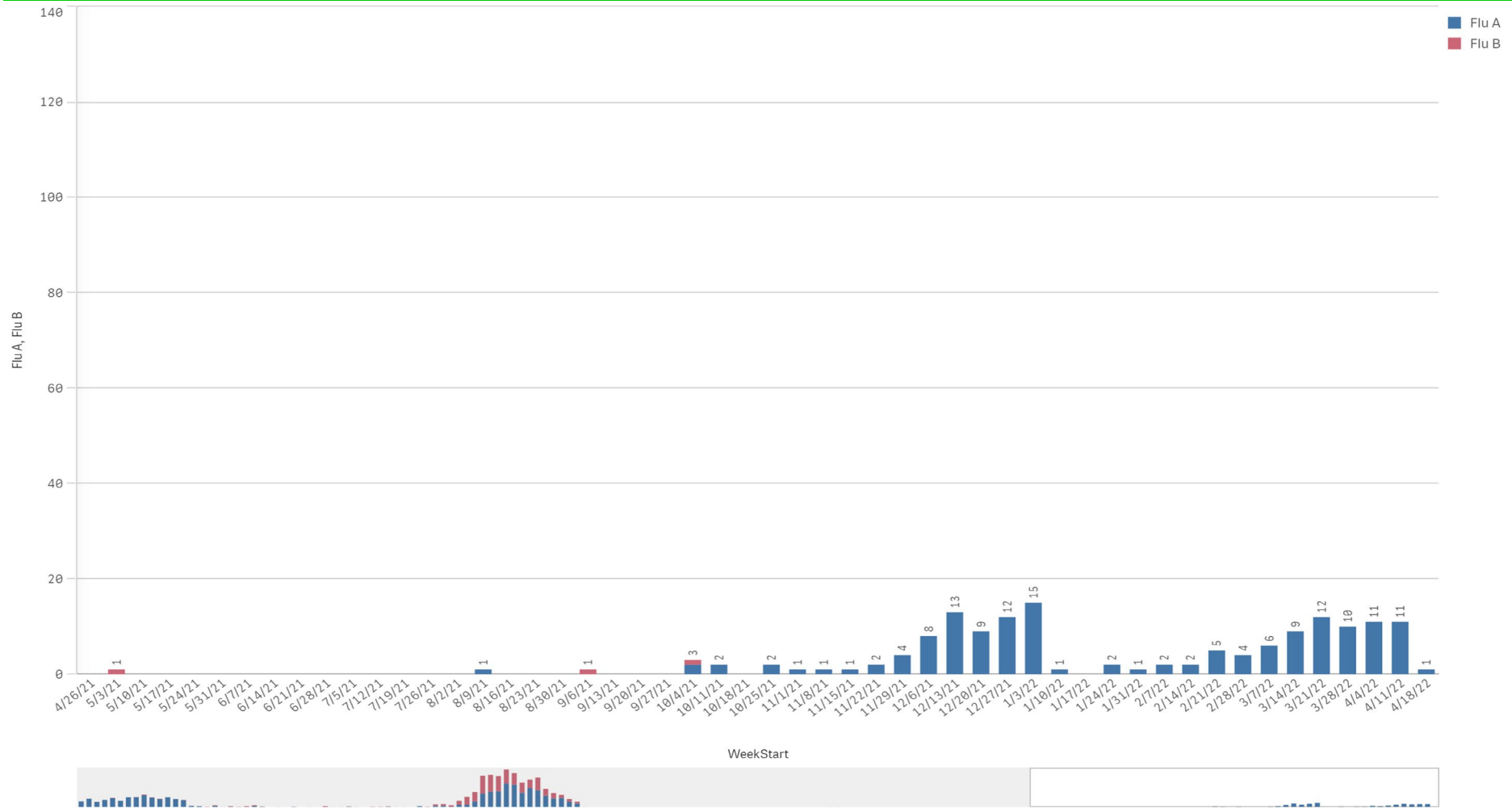
SARS-CoV-2 Positive by Encounter Type - Data as of 4/18/2022



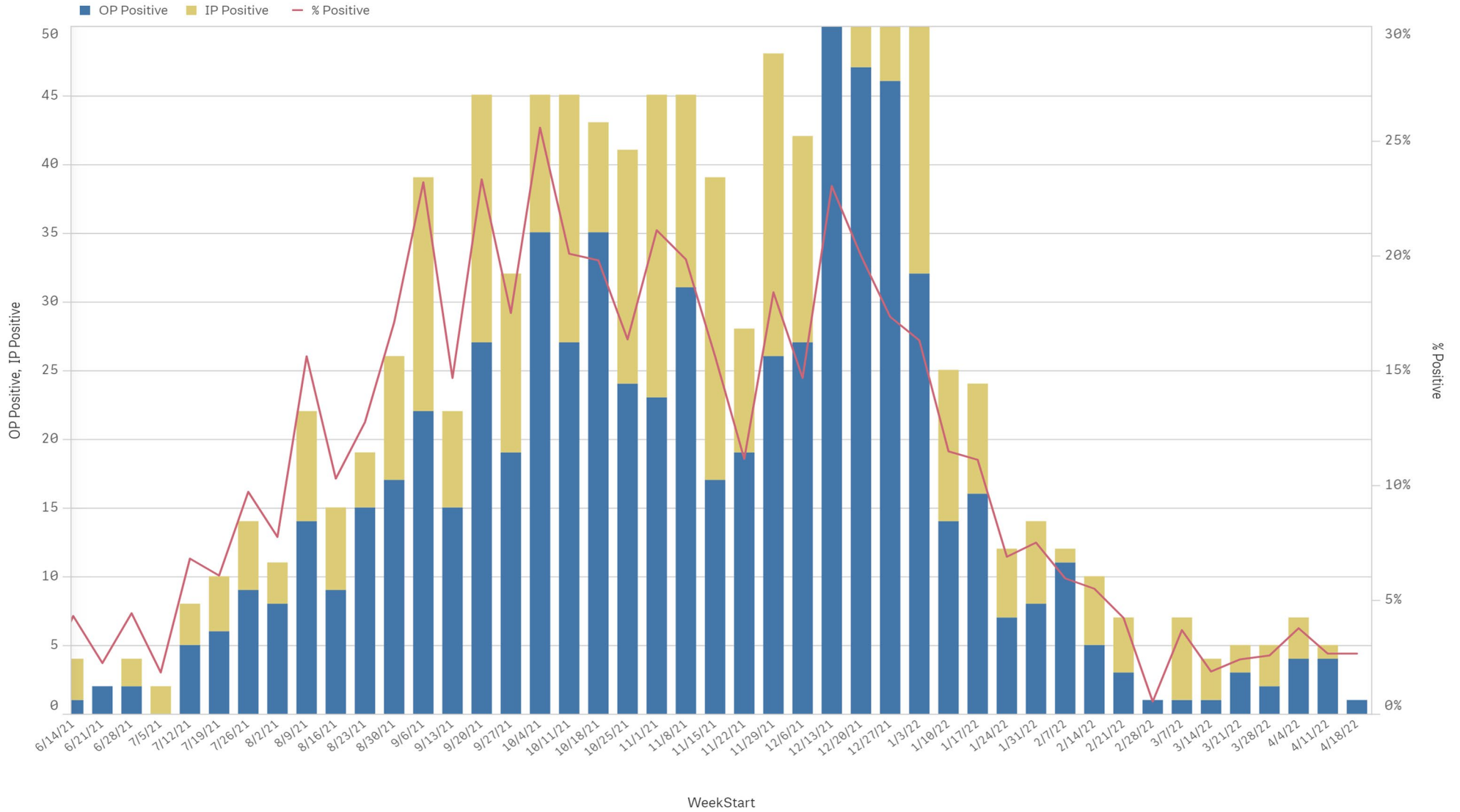
Positive Respiratory Pathogens by Week Start (excl SARS) - Data as of 4/18/2022



Influenza A & B Positive by Week Start - Data as of 4/18/2022



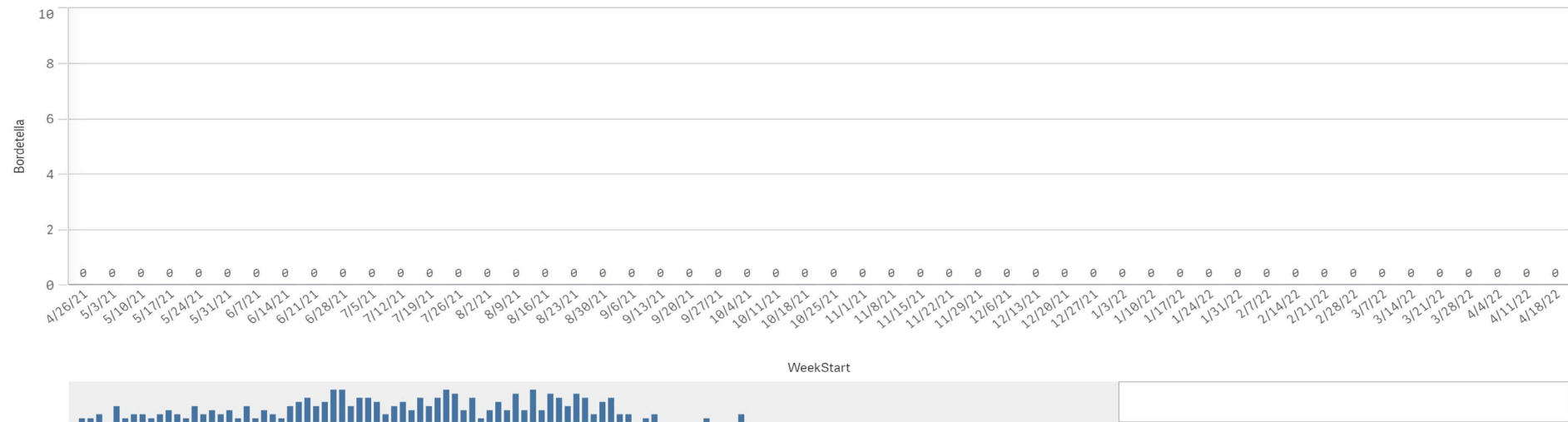
RSV - Data as of 4/18/2022



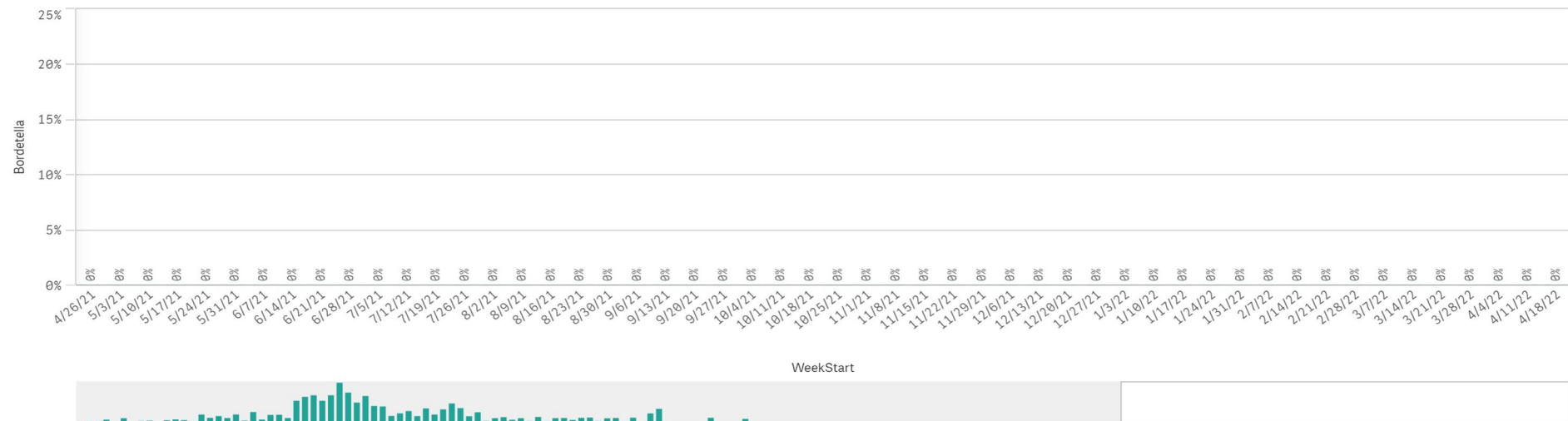
B. Pert/Parap Positives by Week Start - Data as of 4/18/2022



B. Pertussis/Parapertussis Positives by Week



B.pertussis / B.parapertussis % Positive by Week



Enterovirus by Week Start - Data as of 4/18/2022

Enterovirus CSF Positive by Week

