

Volume and Positive Rate

Volume and Positive Rate - Data as of \*\*YTD for this data starts on the first Monday in October.



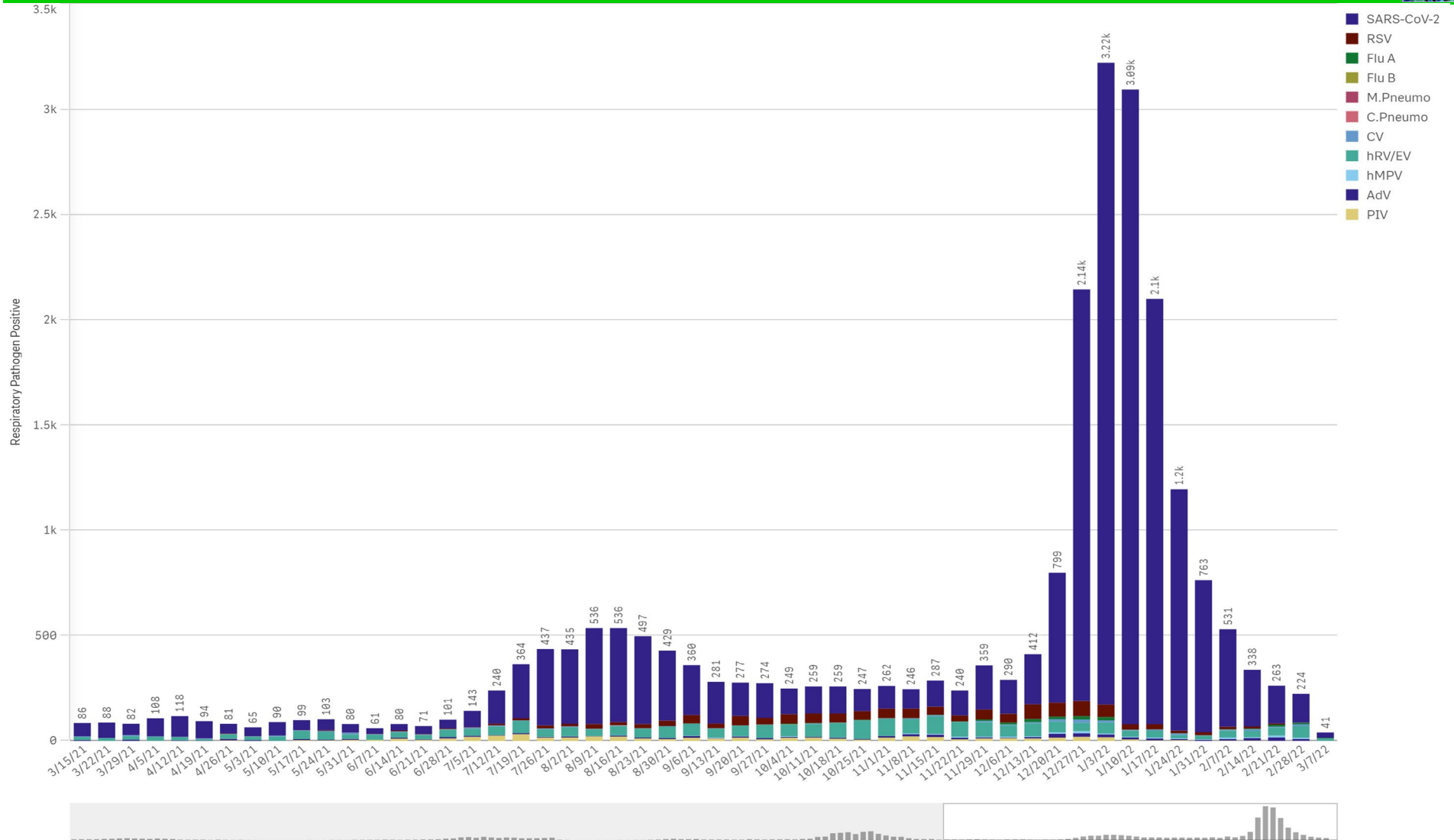
Component Group	Q	Pathogen Positive Previous Week 2/28/2022 - 3/6/2022	Pathogen Tests Previous Week 2/28/2022 - 3/6/2022	Previous Week Positive Rate	Pathogen Positive Current WTD* 3/7/2022 - 3/13/2022	Pathogen Tests Current WTD* 3/7/2022 - 3/13/2022	Current WTD** Positive Rate	Pathogen Tested YTD**	Pathogen Positive YTD**	Positive Rate YTD**
<b>Totals</b>		<b>216</b>	<b>5,052</b>	<b>4.3%</b>	<b>38</b>	<b>677</b>	<b>5.6%</b>	<b>158,316</b>	<b>17,693</b>	<b>11%</b>
COVID-19(SARS-CoV-2,PCR)		137	4,553	3.0%	26	587	4.4%	143,980	15,266	11%
Human Rhinovirus/Enterovirus		55	153	35.9%	10	28	35.7%	3,917	1,159	30%
Adenovirus		9	153	5.9%	0	28	0.0%	3,917	187	5%
Coronavirus(other than COVID-19)		8	153	5.2%	1	28	3.6%	3,917	116	3%
Human Metapneumovirus		6	153	3.9%	1	28	3.6%	3,917	95	2%
Influenza A		4	193	2.1%	3	33	9.1%	6,659	92	1%
Parainfluenza		1	153	0.7%	0	28	0.0%	3,917	224	6%
RSV		1	178	0.6%	0	32	0.0%	5,332	794	15%
B.Pertussis/Parapertussis		0	13	0.0%	0	2	0.0%	427	0	0%
Chlamydia Pneumoniae		0	153	0.0%	0	28	0.0%	3,917	0	0%
Enterovirus,CSF		0	2	0.0%	0	0	-	18	0	0%
Influenza B		0	193	0.0%	0	33	0.0%	6,659	1	0%
Mycoplasma Pneumoniae		0	153	0.0%	0	28	0.0%	3,917	0	0%

\*Current WTD may not be a completed week, depending on when the data is being reviewed. Refer to data date on page header for reference.

\*\*YTD for this data starts on the first Monday in October.

\*Current WTD may not be a complete week, depending on when data is being reviewed. Refer to data date on page header for reference.  
\*\*YTD for this data starts on the first Monday in October.

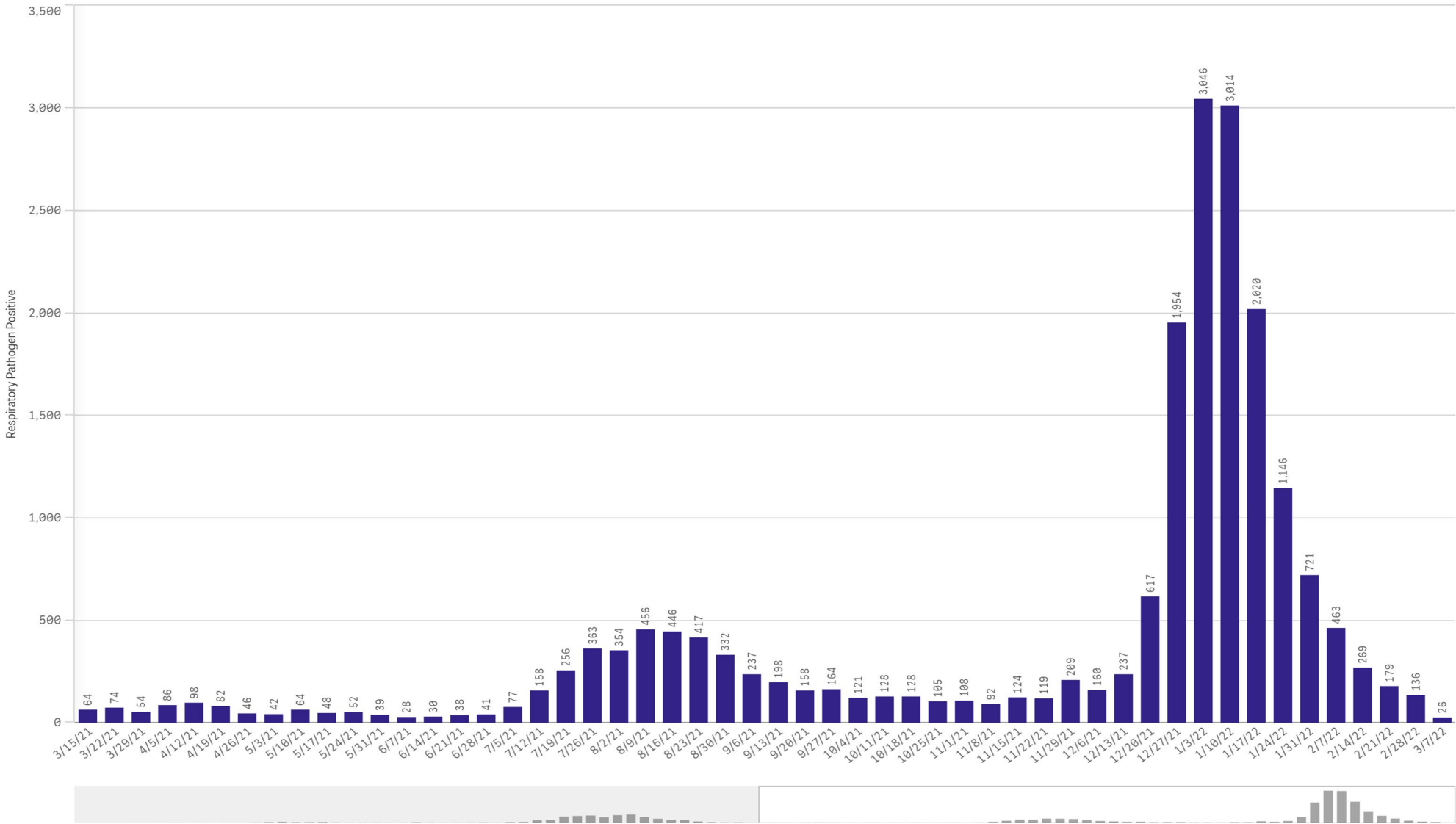
All Positive Respiratory Pathogens by Week Start - Data as of 3/7/2022



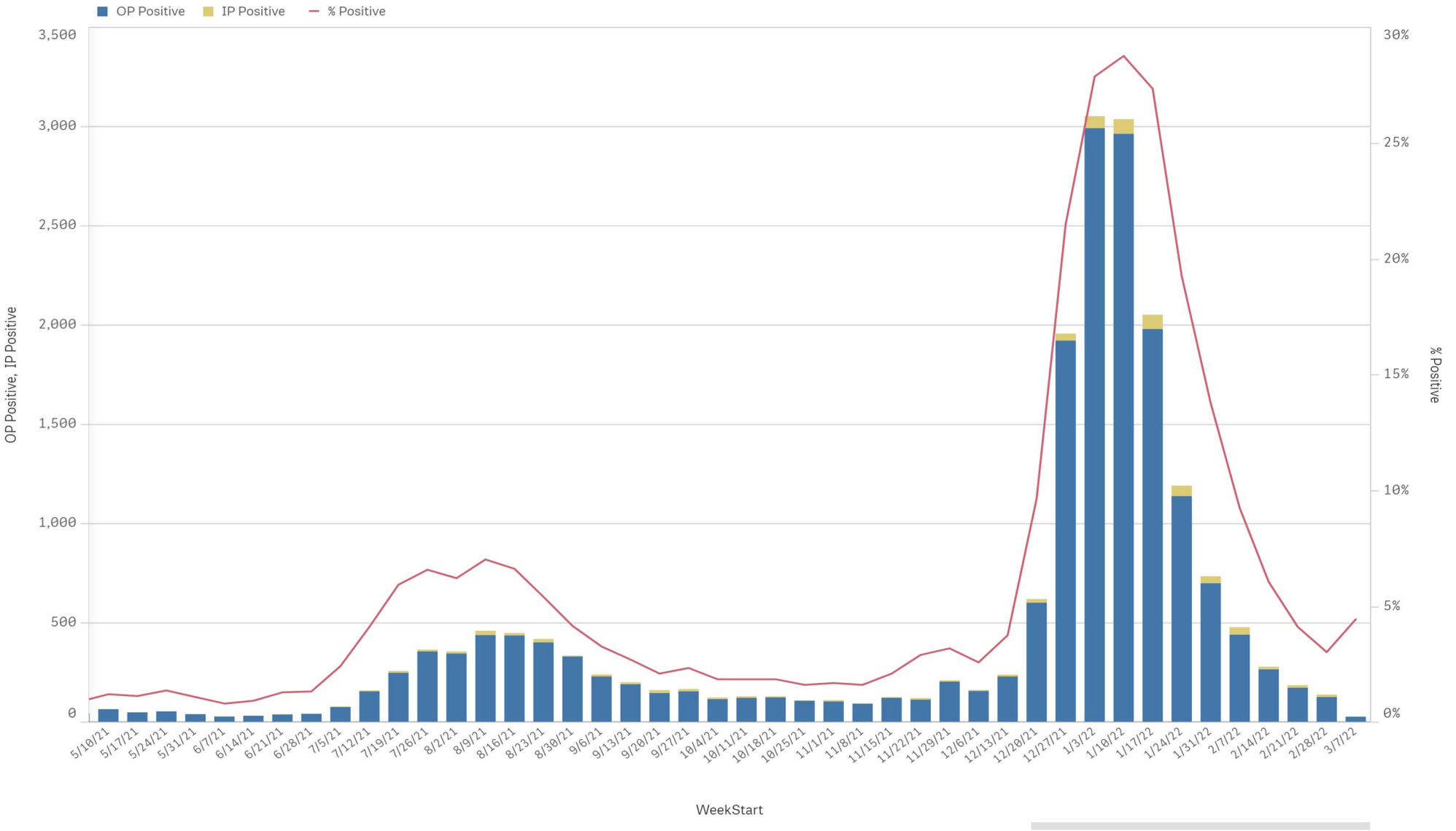
Positive SARS-CoV-2 Pathogens by Week Start - Data as of 3/7/2022



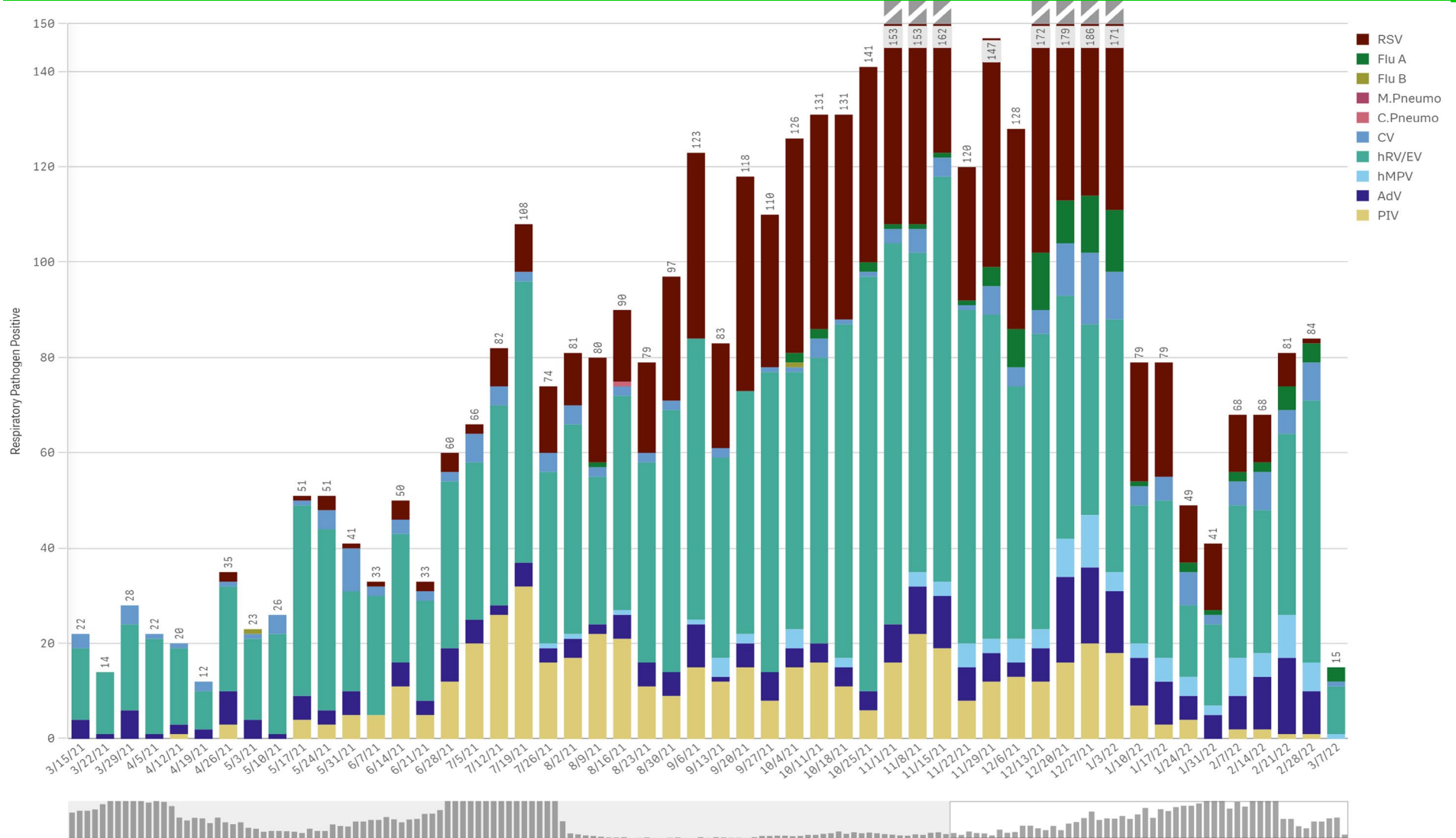
SARS-CoV-2 Positive Cases



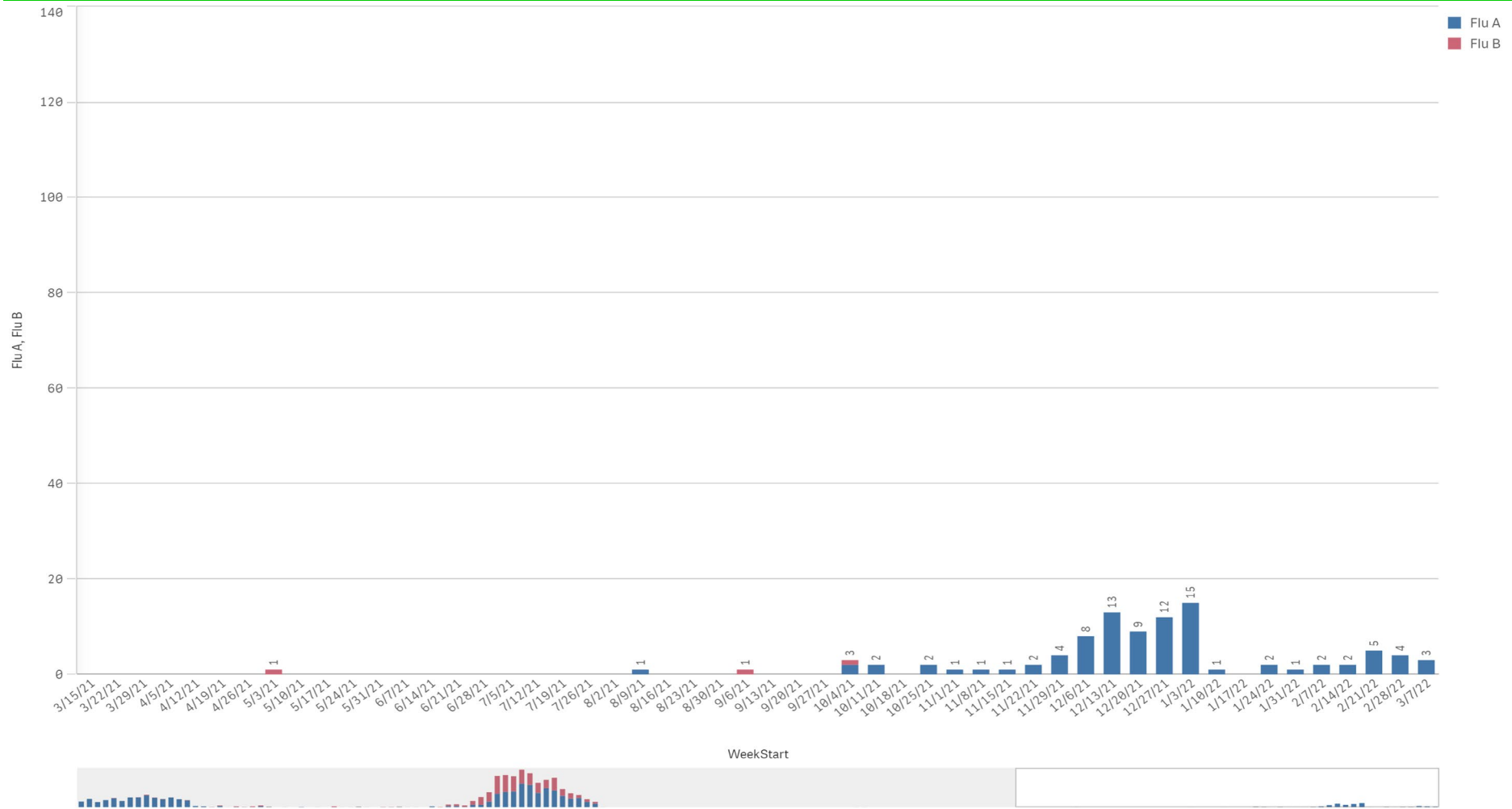
SARS-CoV-2 Positive by Encounter Type - Data as of 3/7/2022



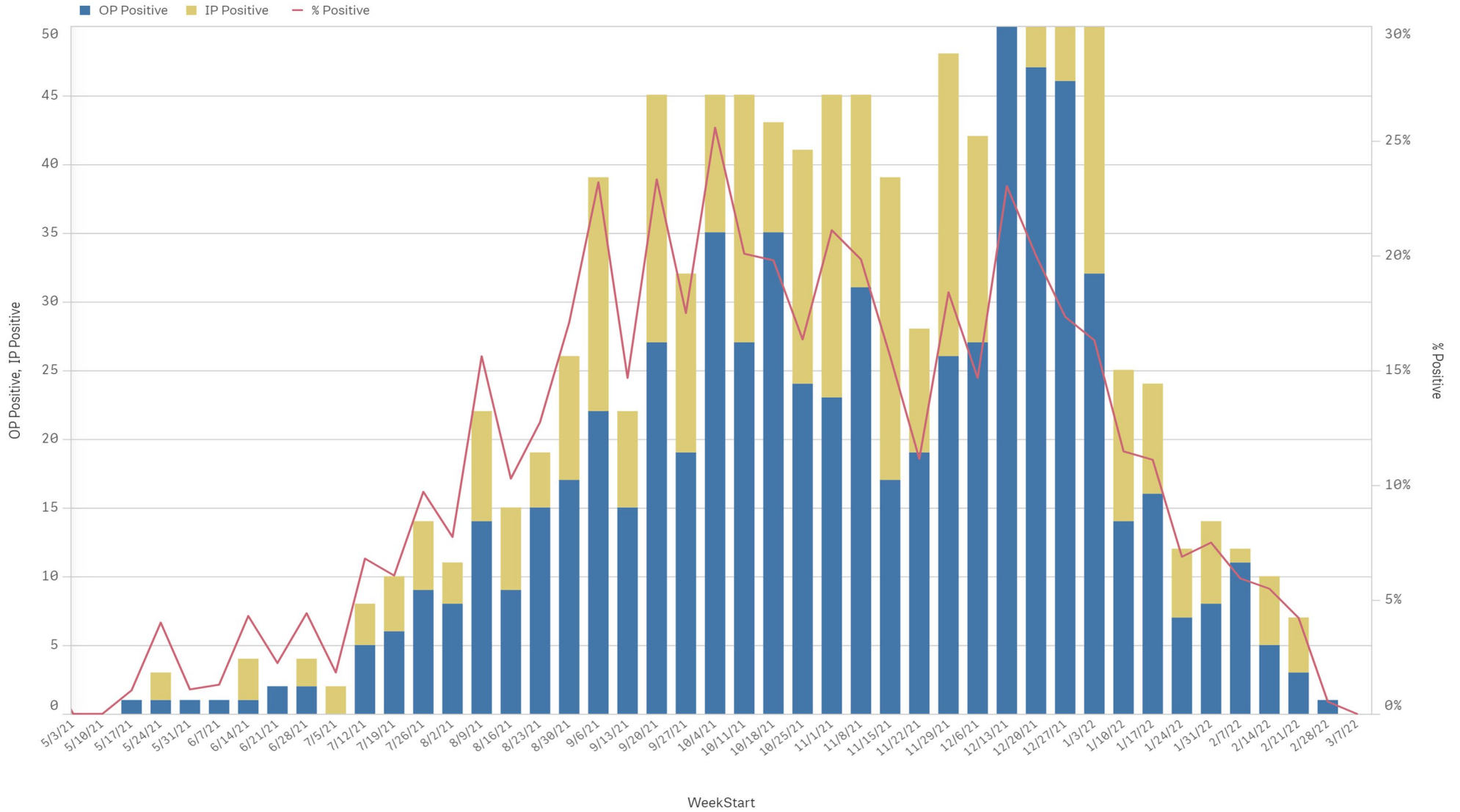
Positive Respiratory Pathogens by Week Start (excl SARS) - Data as of 3/7/2022



Influenza A & B Positive by Week Start - Data as of 3/7/2022



RSV - Data as of 3/7/2022

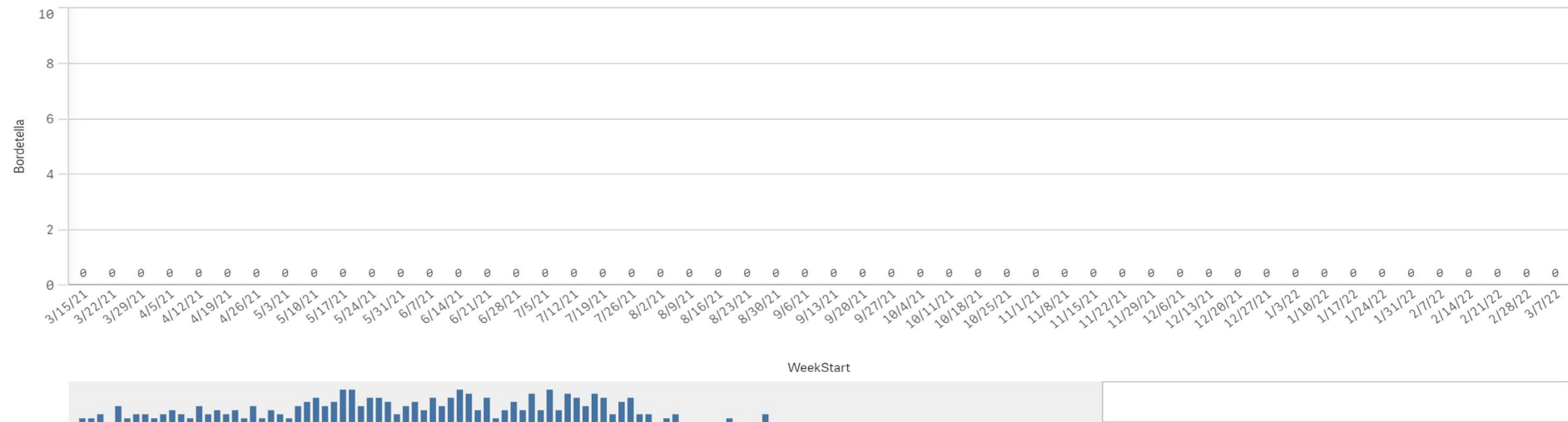




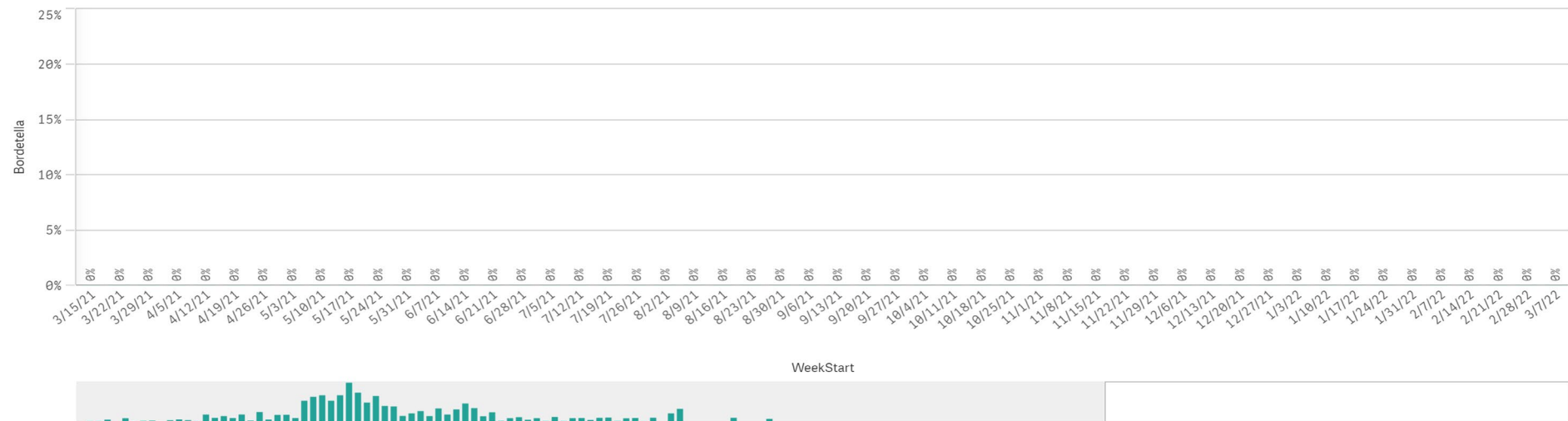
B. Pert/Parap Positives by Week Start - Data as of 3/7/2022



B. Pertussis/Parapertussis Positives by Week



B.pertussis / B.parapertussis % Positive by Week



Enterovirus by Week Start - Data as of 3/7/2022

Enterovirus CSF Positive by Week

