

Volume and Positive Rate

Volume and Positive Rate - Data as of **YTD for this data starts on the first Monday in October.



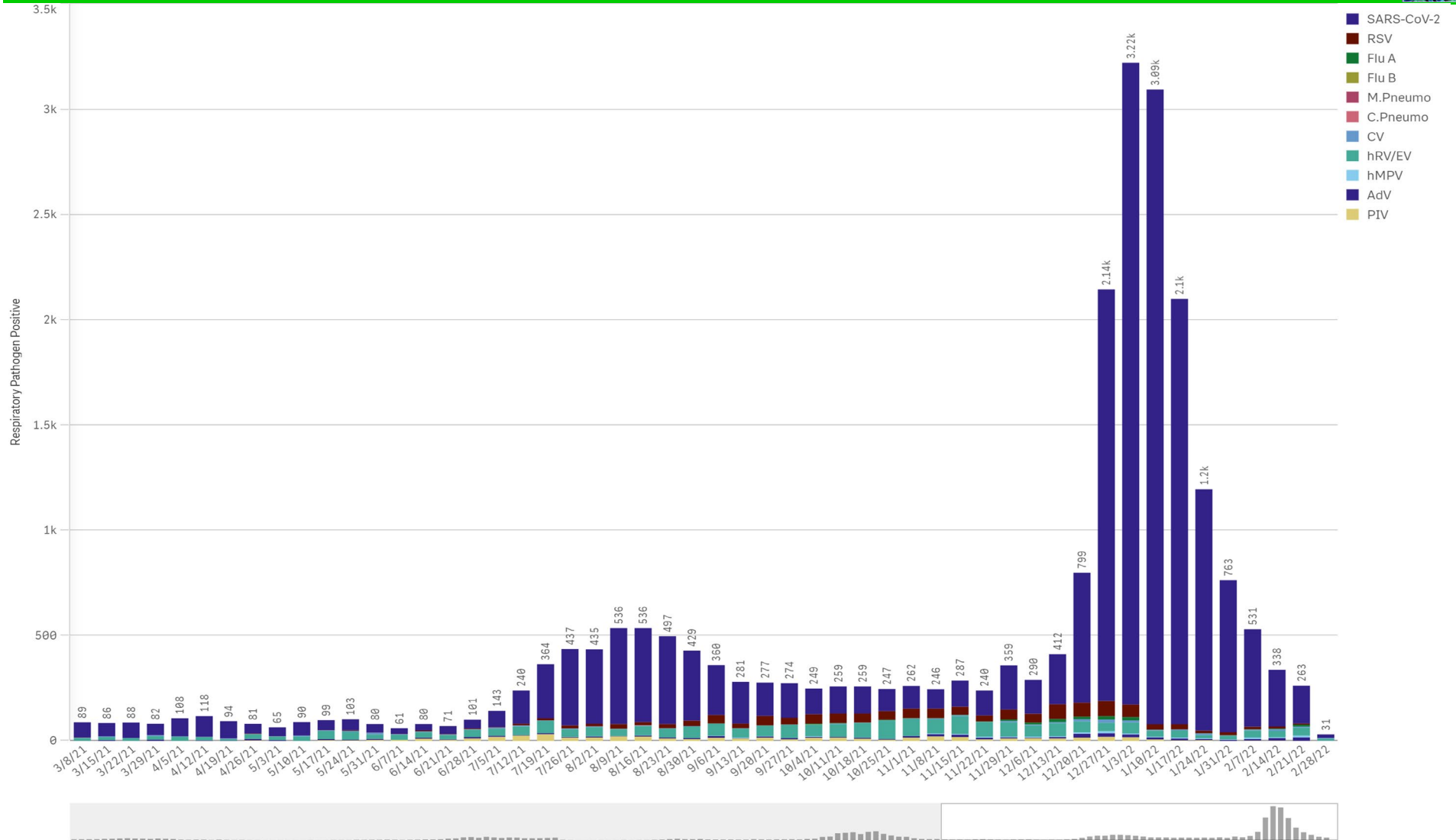
Component Group	Q	Pathogen Positive Previous Week 2/21/2022 - 2/27/2022	Pathogen Tests Previous Week 2/21/2022 - 2/27/2022	Previous Week Positive Rate	Pathogen Positive Current WTD* 2/28/2022 - 3/6/2022	Pathogen Tests Current WTD* 2/28/2022 - 3/6/2022	Current WTD** Positive Rate	Pathogen Tested YTD**	Pathogen Positive YTD**	Positive Rate YTD**
Totals		253	4,914	5.1%	30	570	5.3%	153,157	17,469	11%
COVID-19(SARS-CoV-2,PCR)		184	4,472	4.1%	17	490	3.5%	139,330	15,120	11%
Human Rhinovirus/Enterovirus		38	134	28.4%	10	24	41.7%	3,760	1,104	29%
Adenovirus		16	134	11.9%	1	24	4.2%	3,760	179	5%
Human Metapneumovirus		9	134	6.7%	1	24	4.2%	3,760	89	2%
RSV		7	167	4.2%	0	31	0.0%	5,153	793	15%
Coronavirus(other than COVID-19)		5	134	3.7%	2	24	8.3%	3,760	109	3%
Influenza A		5	174	2.9%	0	32	0.0%	6,465	85	1%
Parainfluenza		1	134	0.7%	0	24	0.0%	3,760	223	6%
B.Pertussis/Parapertussis		0	7	0.0%	0	1	0.0%	413	0	0%
Chlamydia Pneumoniae		0	134	0.0%	0	24	0.0%	3,760	0	0%
Enterovirus,CSF		0	0	-	0	0	-	16	0	0%
Influenza B		0	174	0.0%	0	32	0.0%	6,465	1	0%
Mycoplasma Pneumoniae		0	134	0.0%	0	24	0.0%	3,760	0	0%

*Current WTD may not be a completed week, depending on when the data is being reviewed. Refer to data date on page header for reference.

**YTD for this data starts on the first Monday in October.

*Current WTD may not be a complete week, depending on when data is being reviewed. Refer to data date on page header for reference.
**YTD for this data starts on the first Monday in October.

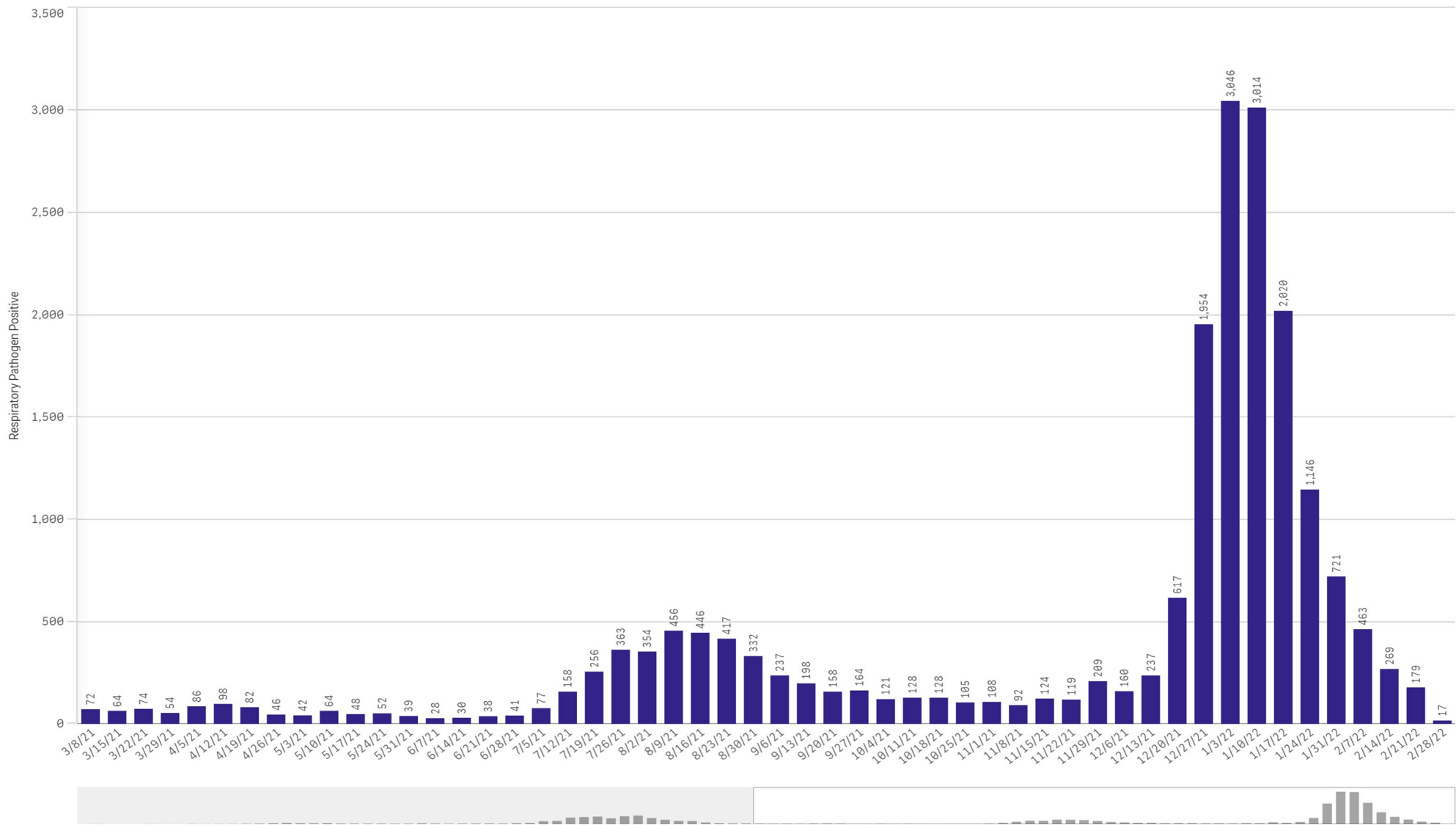
All Positive Respiratory Pathogens by Week Start - Data as of 2/28/2022



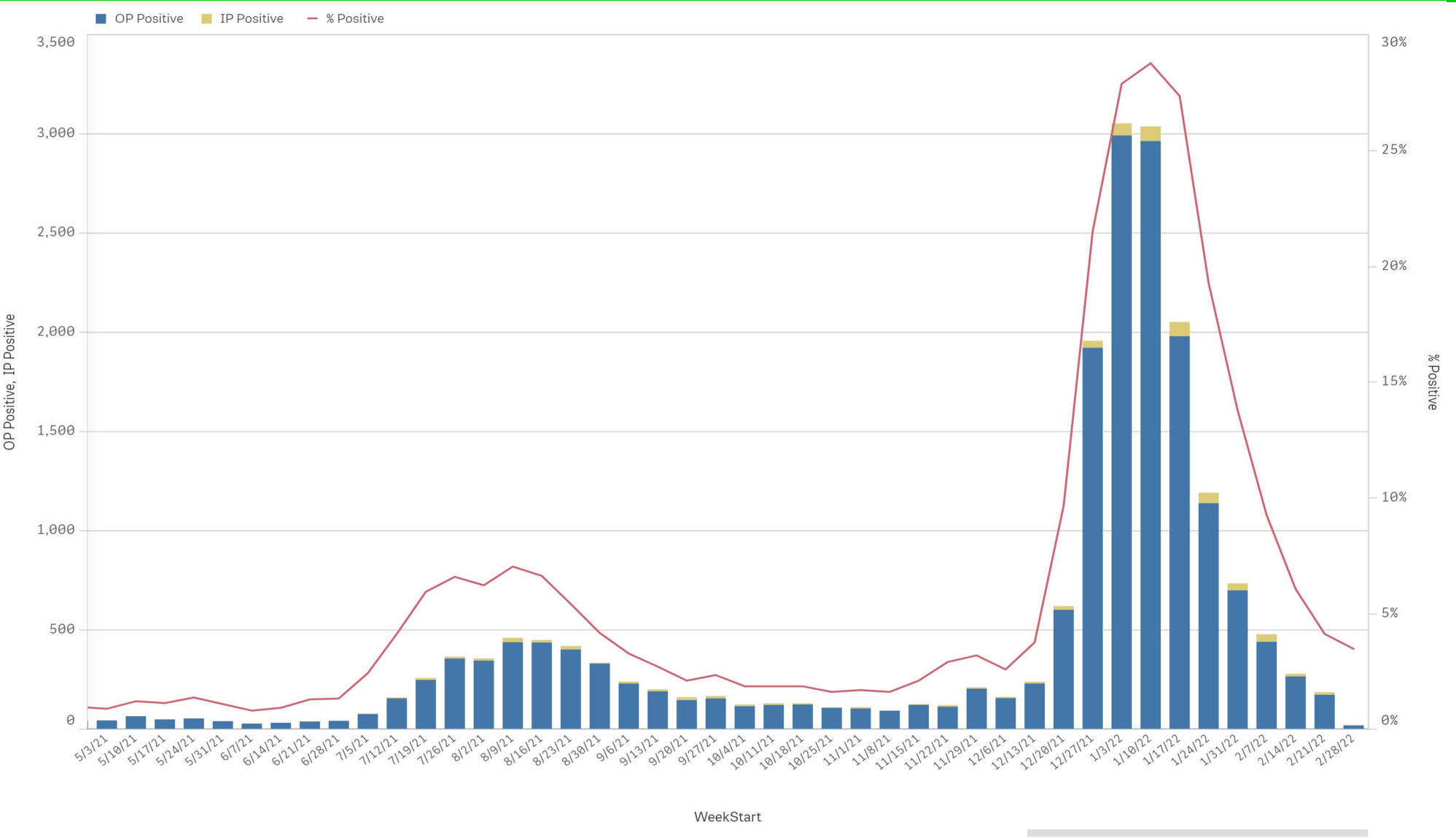
Positive SARS-CoV-2 Pathogens by Week Start - Data as of 2/28/2022



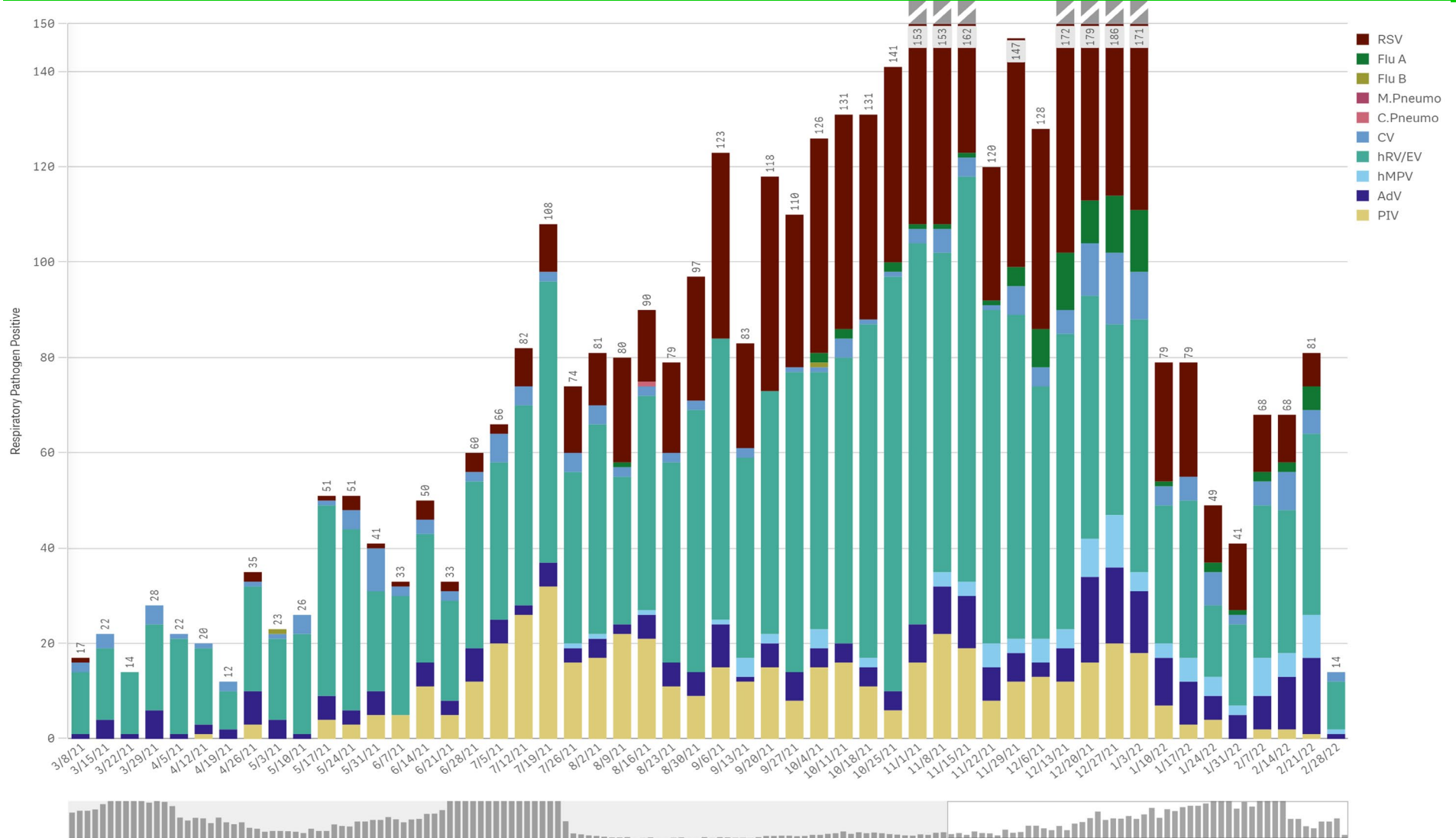
SARS-CoV-2 Positive Cases



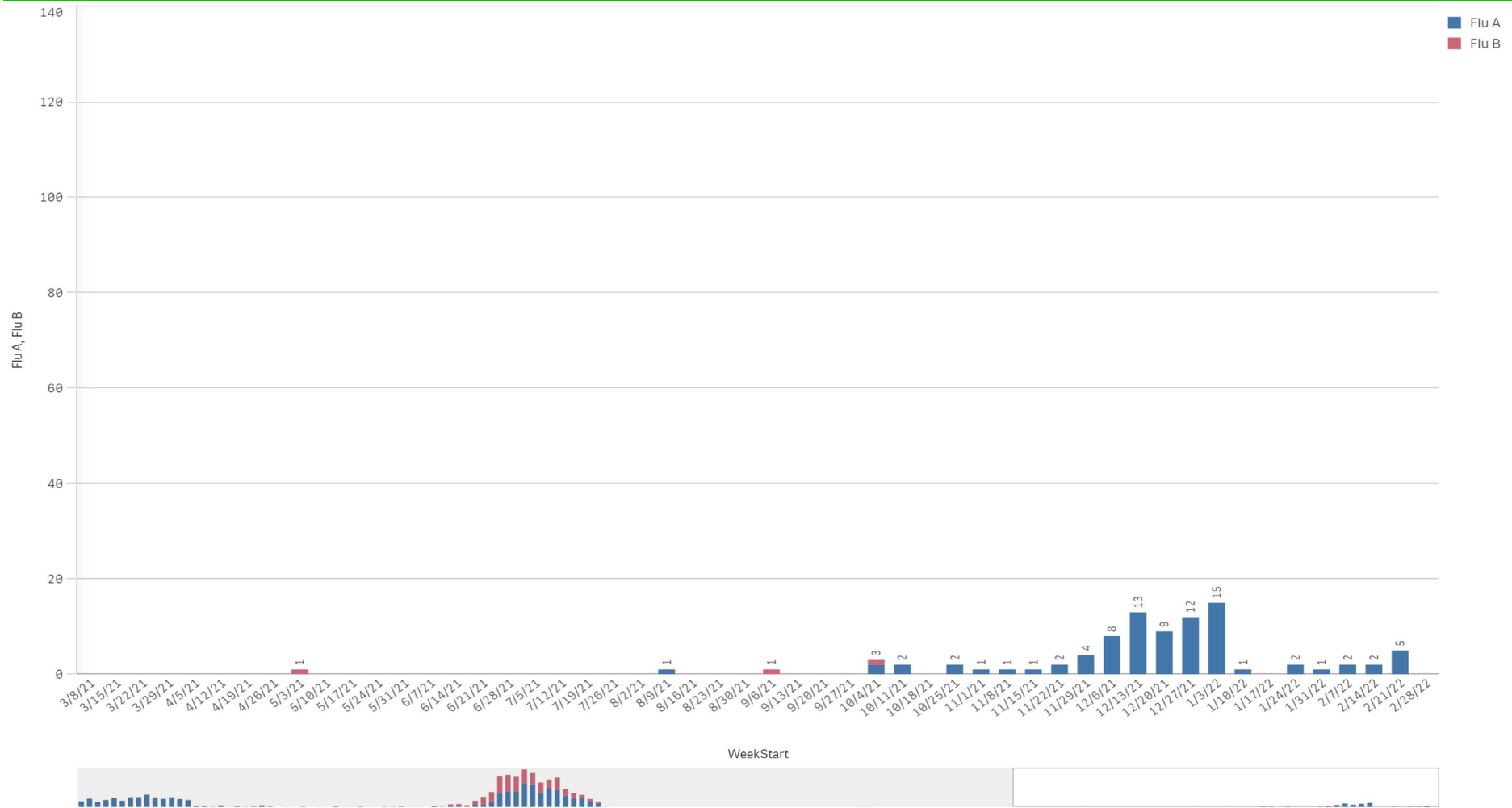
SARS-CoV-2 Positive by Encounter Type - Data as of 2/28/2022



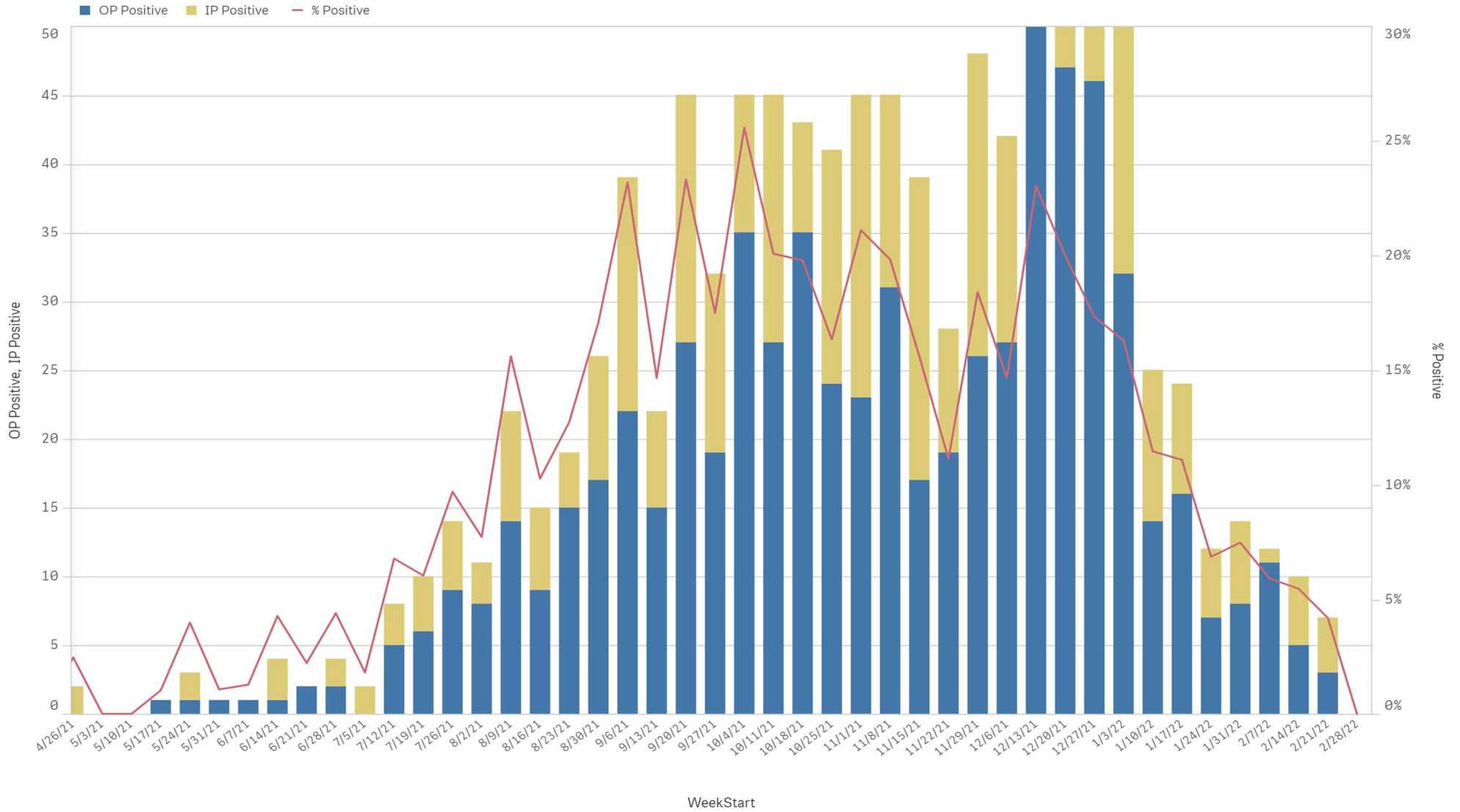
Positive Respiratory Pathogens by Week Start (excl SARS) - Data as of 2/28/2022



Influenza A & B Positive by Week Start - Data as of 2/28/2022



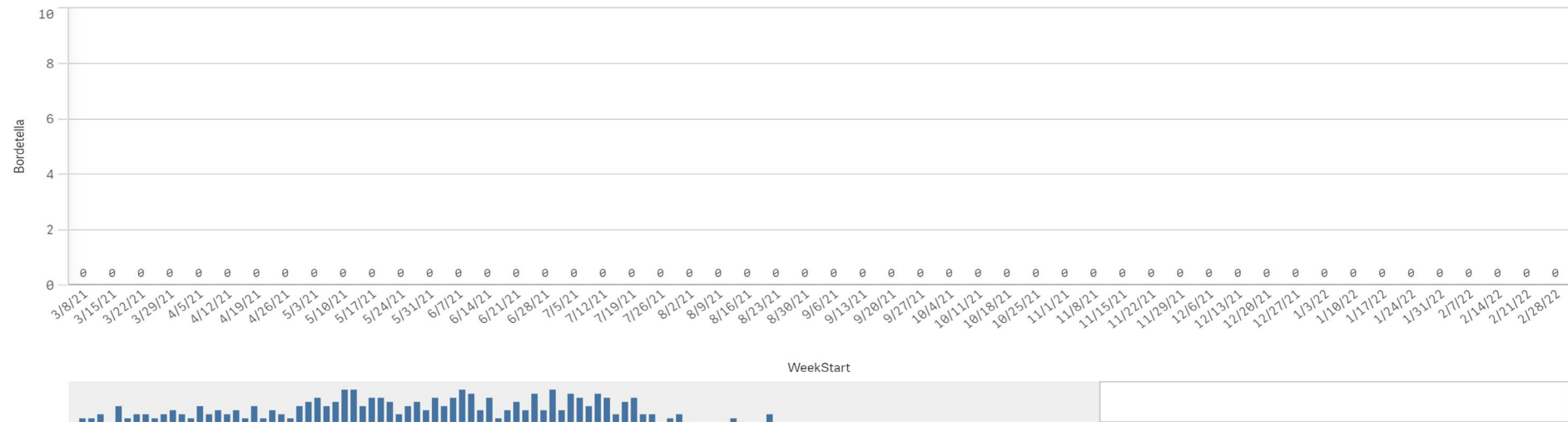
RSV - Data as of 2/28/2022



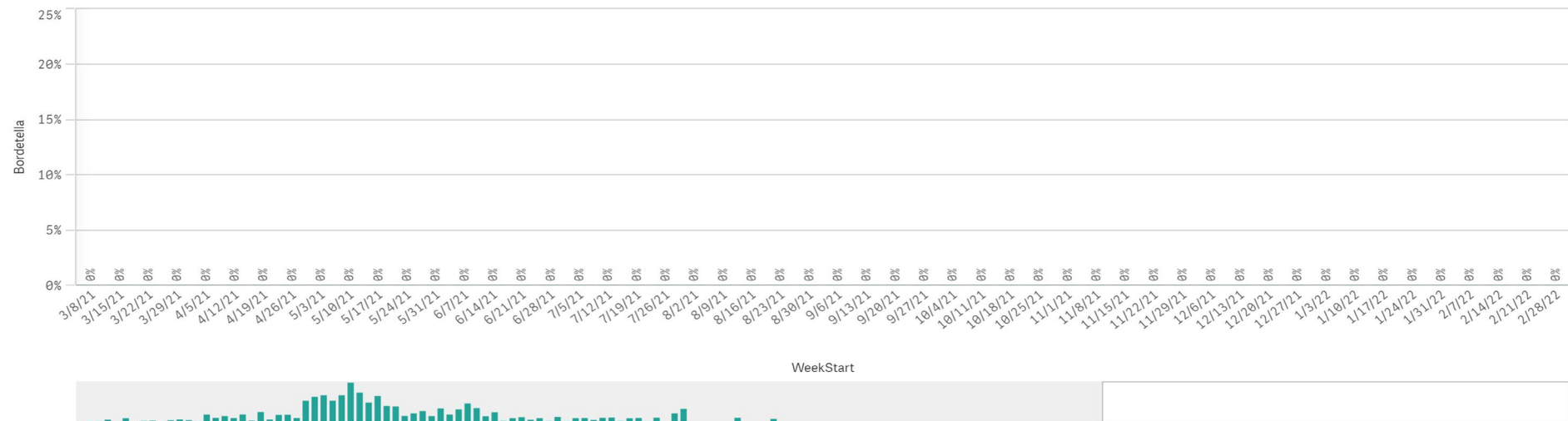
B. Pert/Parap Positives by Week Start - Data as of 2/28/2022



B. Pertussis/Parapertussis Positives by Week



B.pertussis / B.parapertussis % Positive by Week



Enterovirus by Week Start - Data as of 2/28/2022

Enterovirus CSF Positive by Week

