

## Rady Children's Hospital Laboratory Pathogens Report

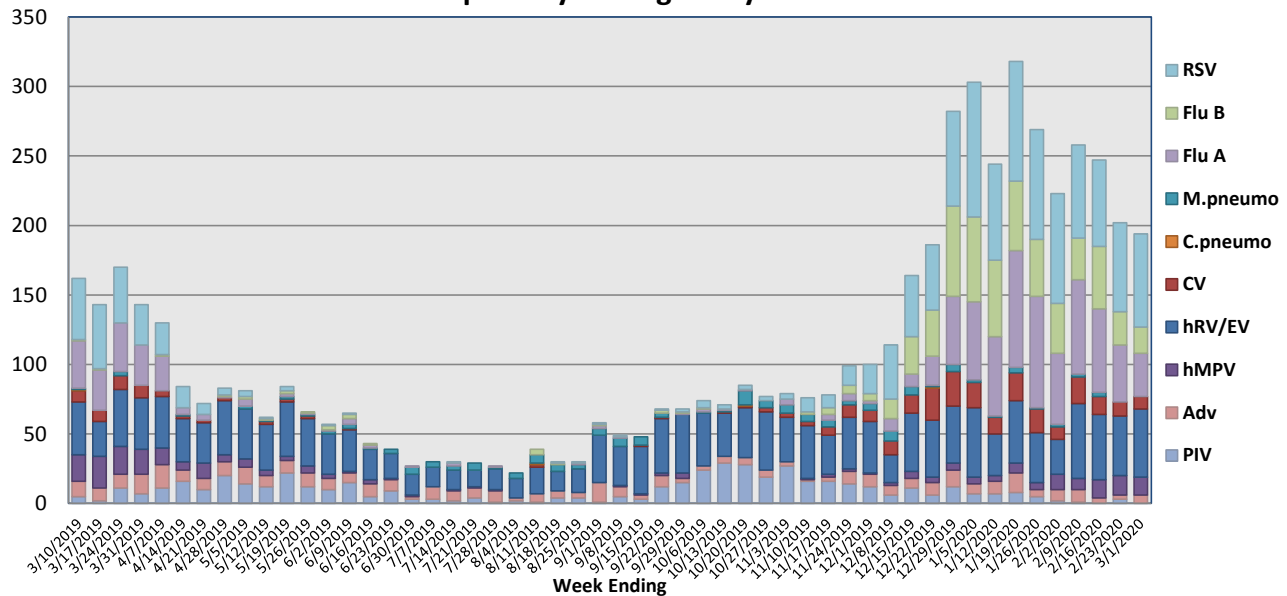
This report is a listing of selected pathogens detected at Rady Children's Hospital Laboratory. The report includes data from locally-collected adult and pediatric specimens.

**February 24 - March 1, 2020**

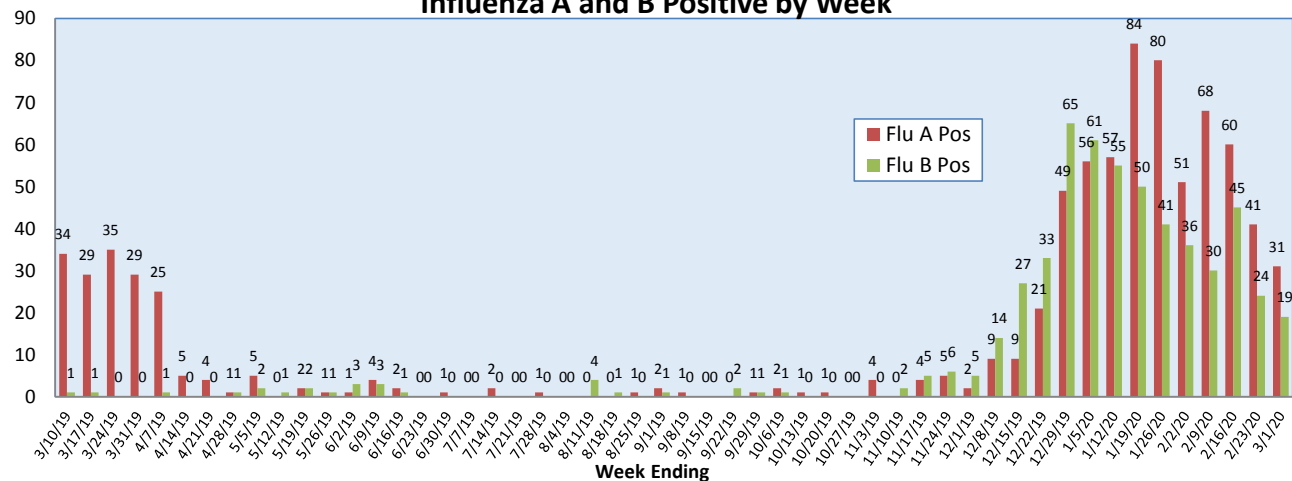
Pathogen	Positive Tests Current Week	Total Tests Current Week	Positive Tests YTD*
RSV	67	386	935
Influenza A	31		633
Influenza B	19		518
Parainfluenza	0	152	229
Adenovirus	6		140
Human Rhinovirus/Enterovirus	49		804
Human Metapneumovirus	13		102
Coronavirus	9		232
Mycoplasma pneumoniae	0		74
Chlamydia pneumoniae	0		2
B. pertussis/parapertussis	2	70	107
Enterovirus, CSF	0	2	8

\*From October 7, 2019

### Respiratory Pathogens by Week

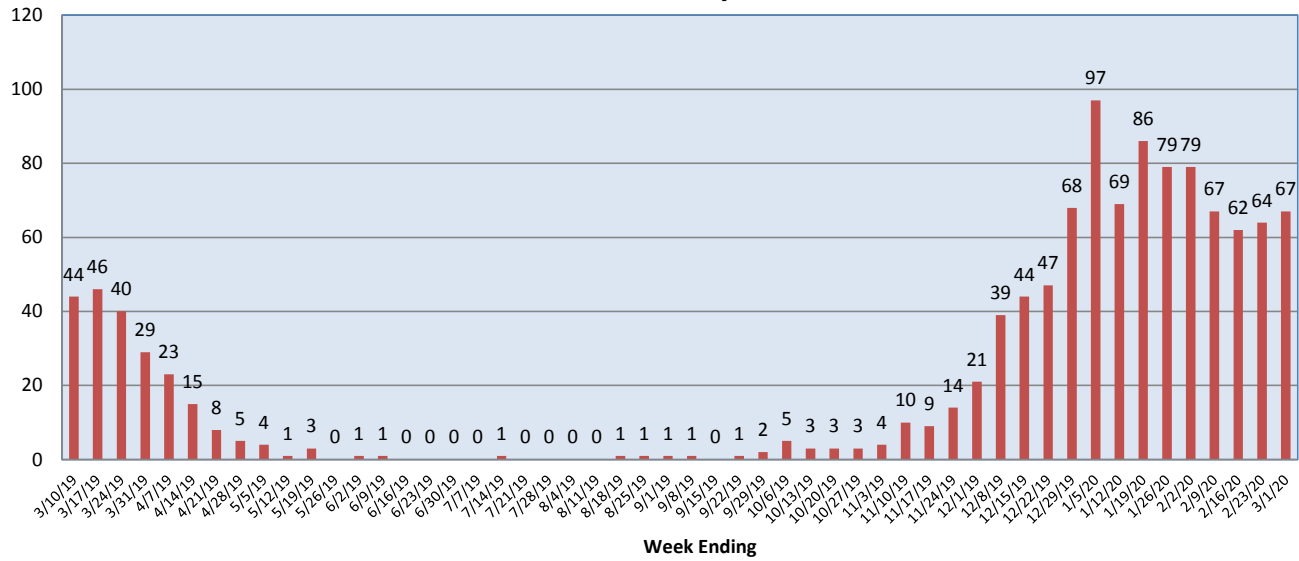


### Influenza A and B Positive by Week

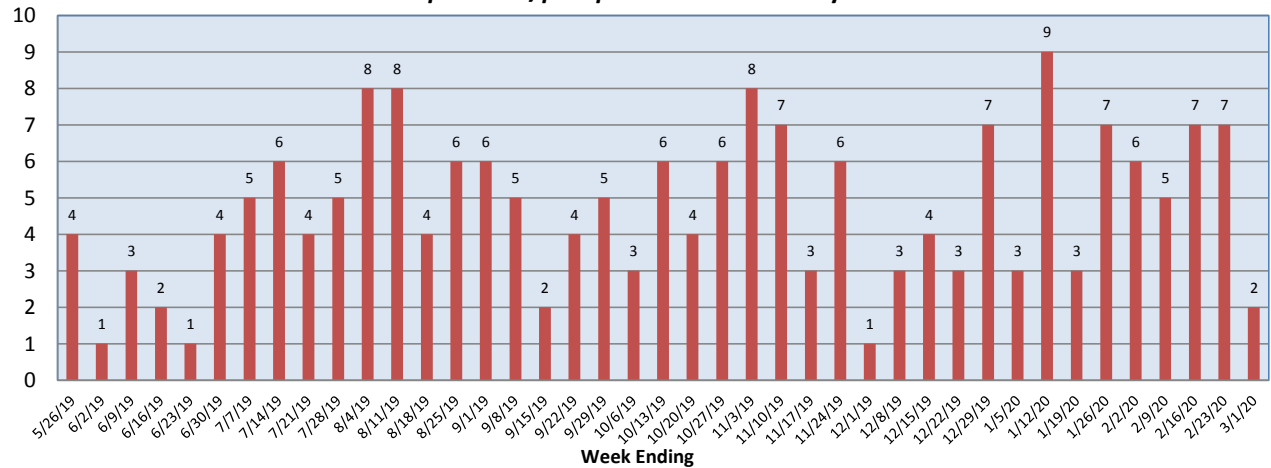


**Rady Children's Hospital Laboratory  
Pathogens Report**

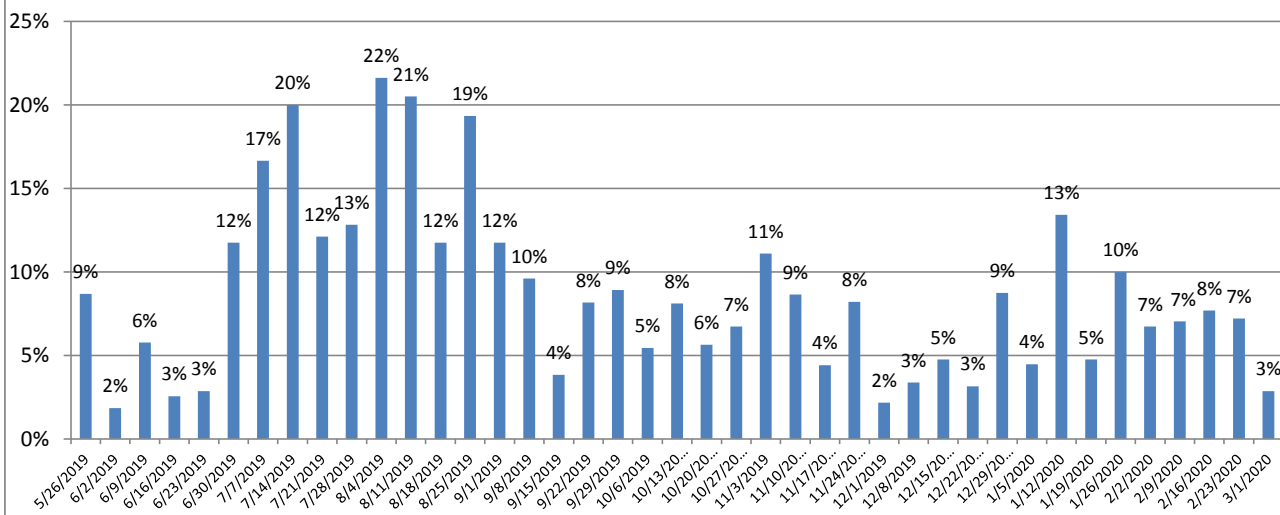
**RSV Positive by Week**



***B. pertussis/parapertussis* Positives by Week**



***B. pertussis / B. parapertussis* % Positive by Week**



Rady Children's Hospital Laboratory  
Pathogens Report

