

Rady Children's Hospital Laboratory Pathogens Report

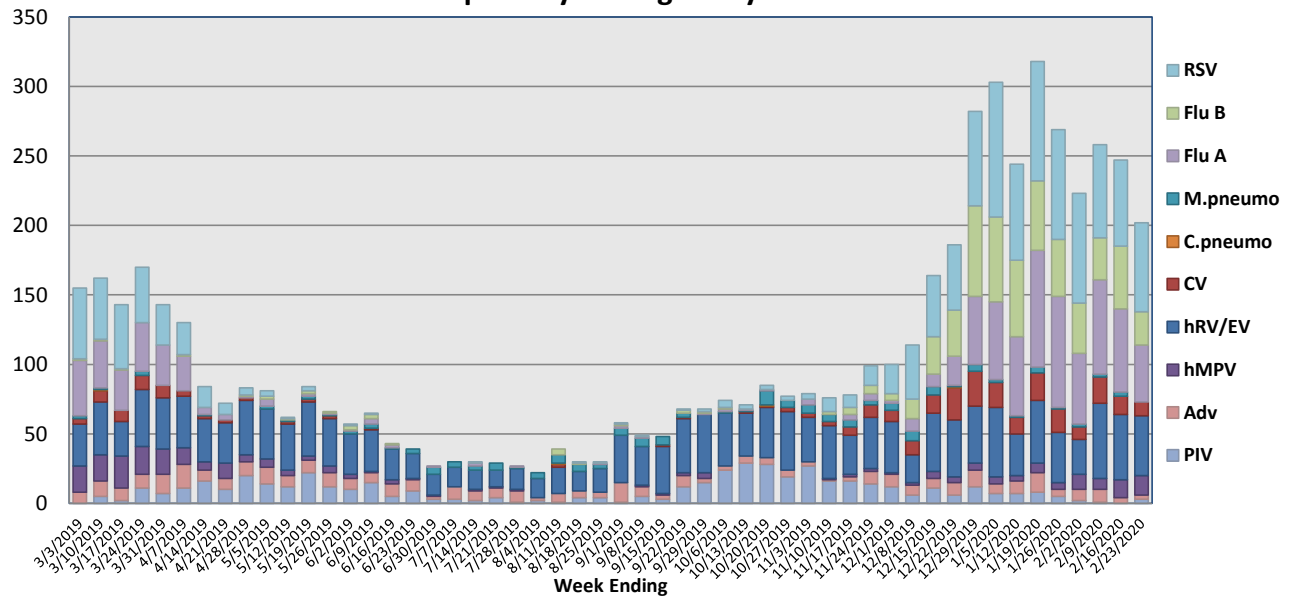
This report is a listing of selected pathogens detected at Rady Children's Hospital Laboratory. The report includes data from locally-collected adult and pediatric specimens.

February 17-23, 2020

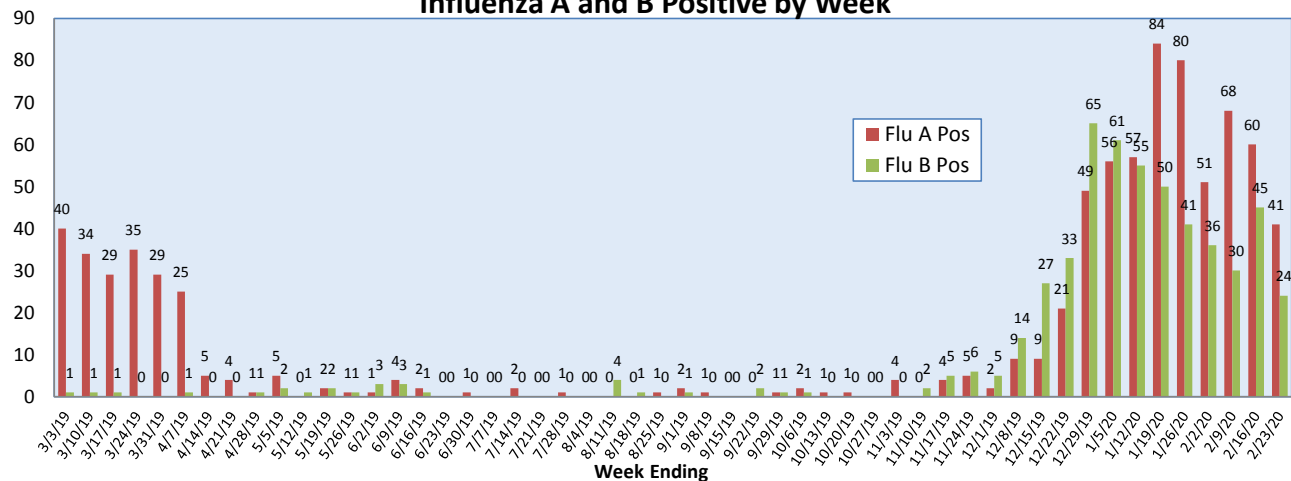
Pathogen	Positive Tests Current Week	Total Tests Current Week	Positive Tests YTD*
RSV	64	350	868
Influenza A	41		602
Influenza B	24		499
Parainfluenza	3		229
Adenovirus	3	142	134
Human Rhinovirus/Enterovirus	43		755
Human Metapneumovirus	14		89
Coronavirus	10		223
Mycoplasma pneumoniae	0		74
Chlamydia pneumoniae	0		2
B. pertussis/parapertussis	7	97	105
Enterovirus, CSF	0	2	8

*From October 7, 2019

Respiratory Pathogens by Week

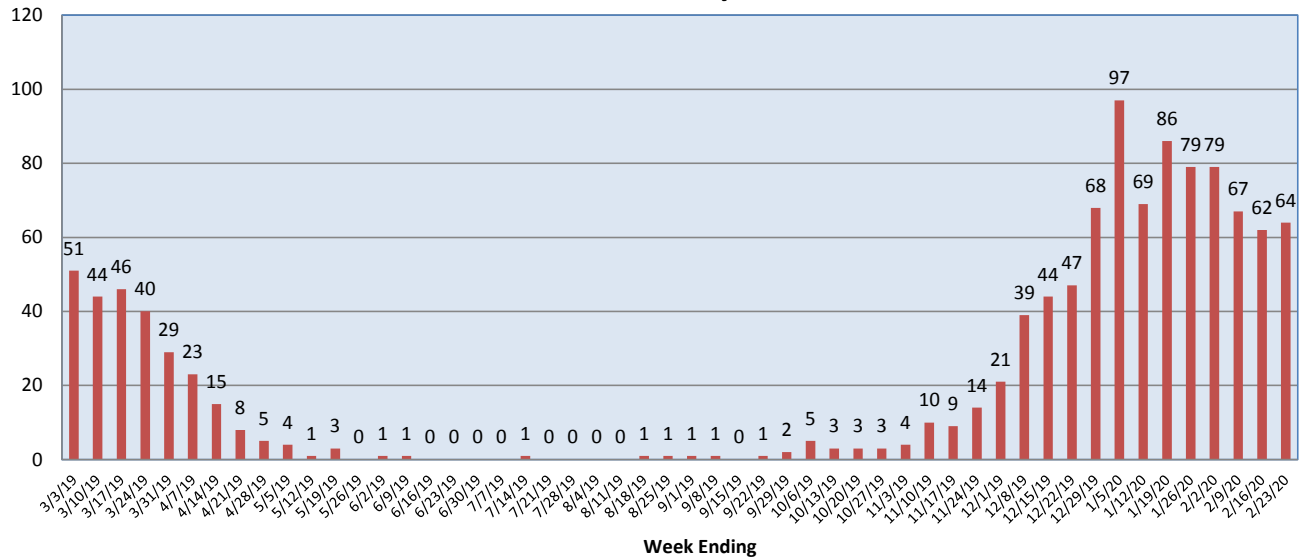


Influenza A and B Positive by Week

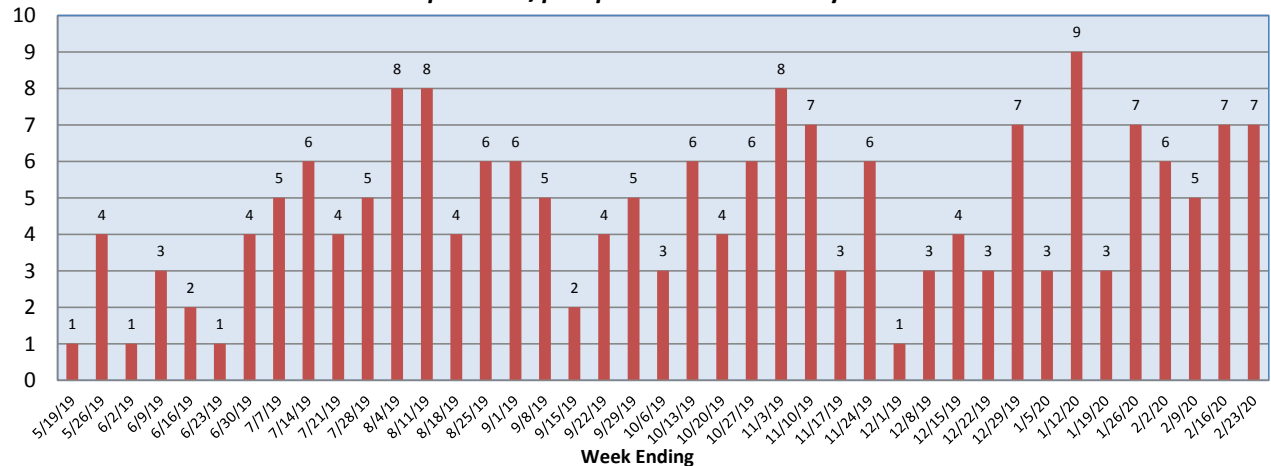


**Rady Children's Hospital Laboratory
Pathogens Report**

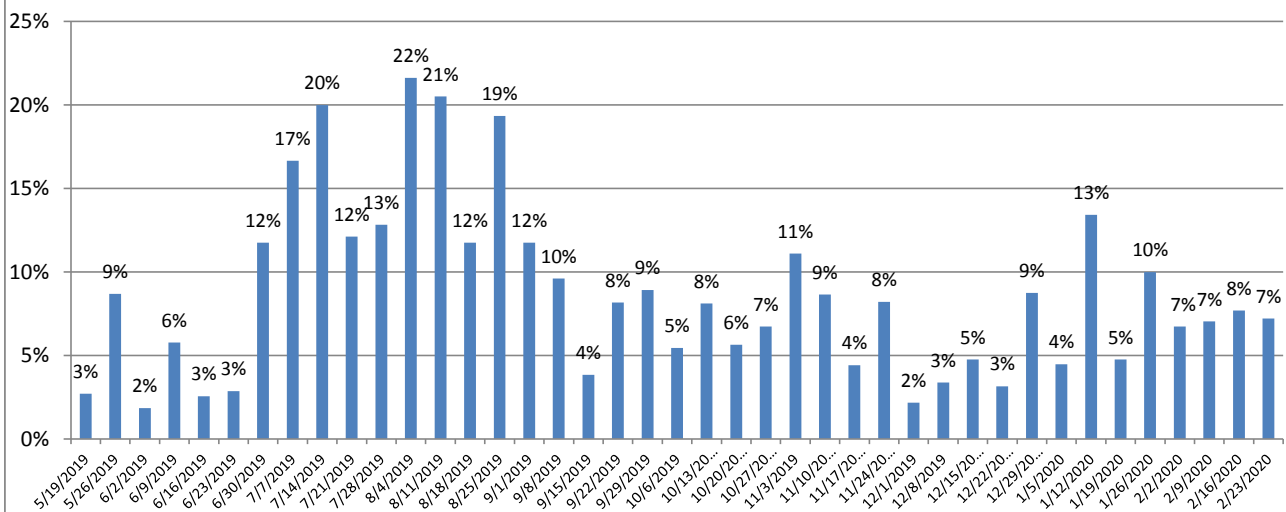
RSV Positive by Week



***B. pertussis/parapertussis* Positives by Week**



***B. pertussis* / *B. parapertussis* % Positive by Week**



Rady Children's Hospital Laboratory
Pathogens Report

