

Rady Children's Hospital Laboratory Pathogens Report

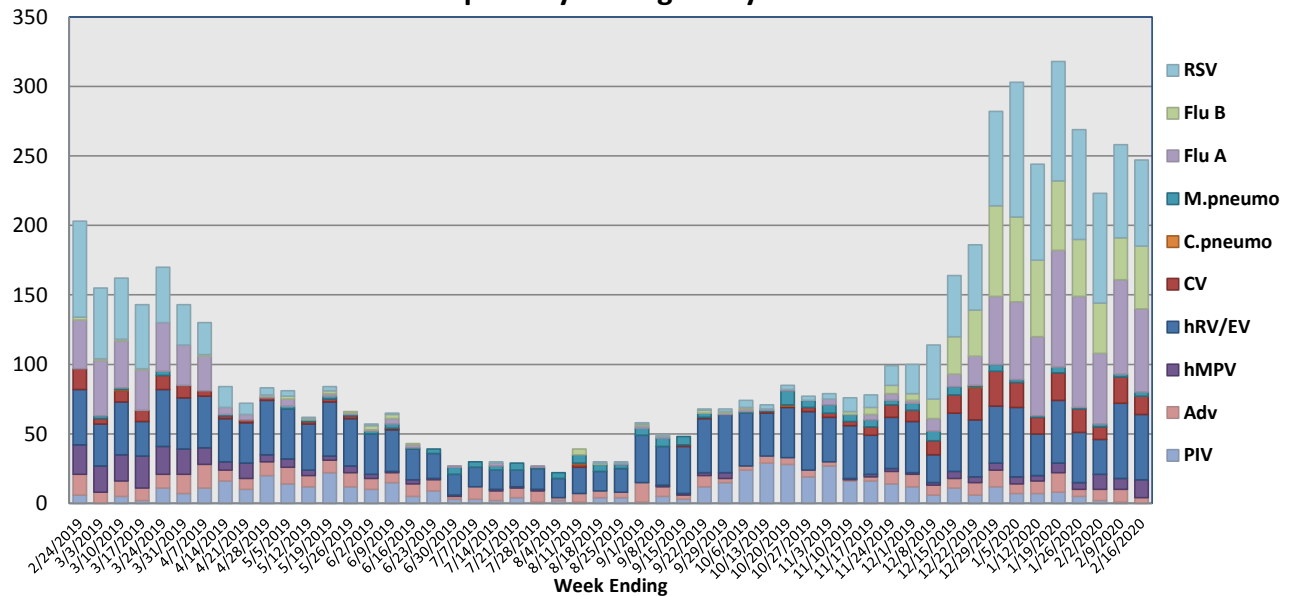
This report is a listing of selected pathogens detected at Rady Children's Hospital Laboratory. The report includes data from locally-collected adult and pediatric specimens.

February 10-16, 2020

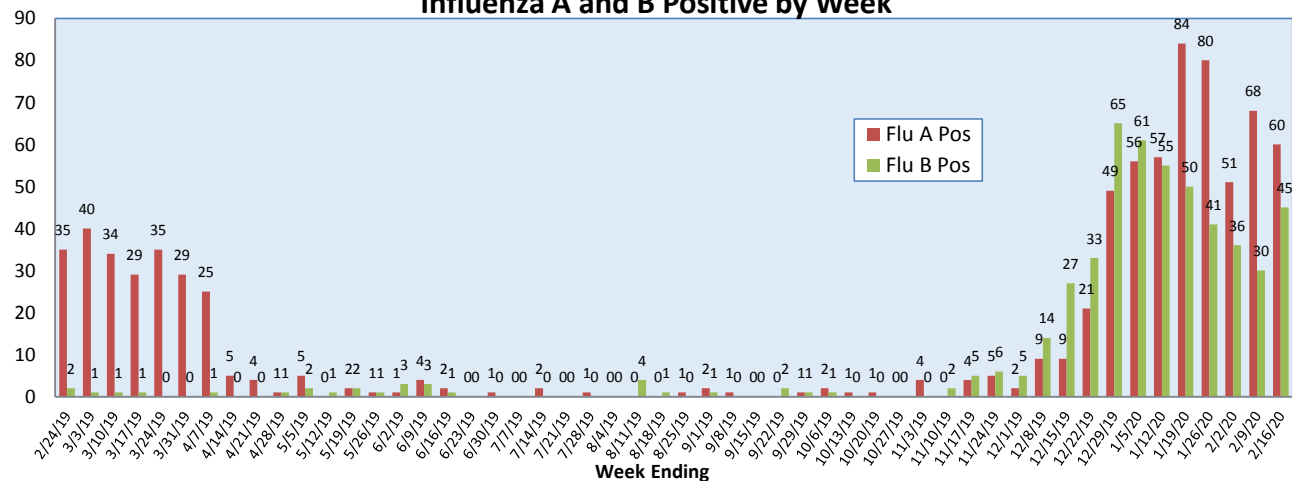
Pathogen	Positive Tests Current Week	Total Tests Current Week	Positive Tests YTD*
RSV	62	404	804
Influenza A	60		561
Influenza B	45		475
Parainfluenza	0	169	226
Adenovirus	4		131
Human Rhinovirus/Enterovirus	47		712
Human Metapneumovirus	3		75
Coronavirus	13		213
Mycoplasma pneumoniae	3		74
Chlamydia pneumoniae	0		2
B. pertussis/parapertussis	7	91	98
Enterovirus, CSF	0	2	8

*From October 7, 2019

Respiratory Pathogens by Week

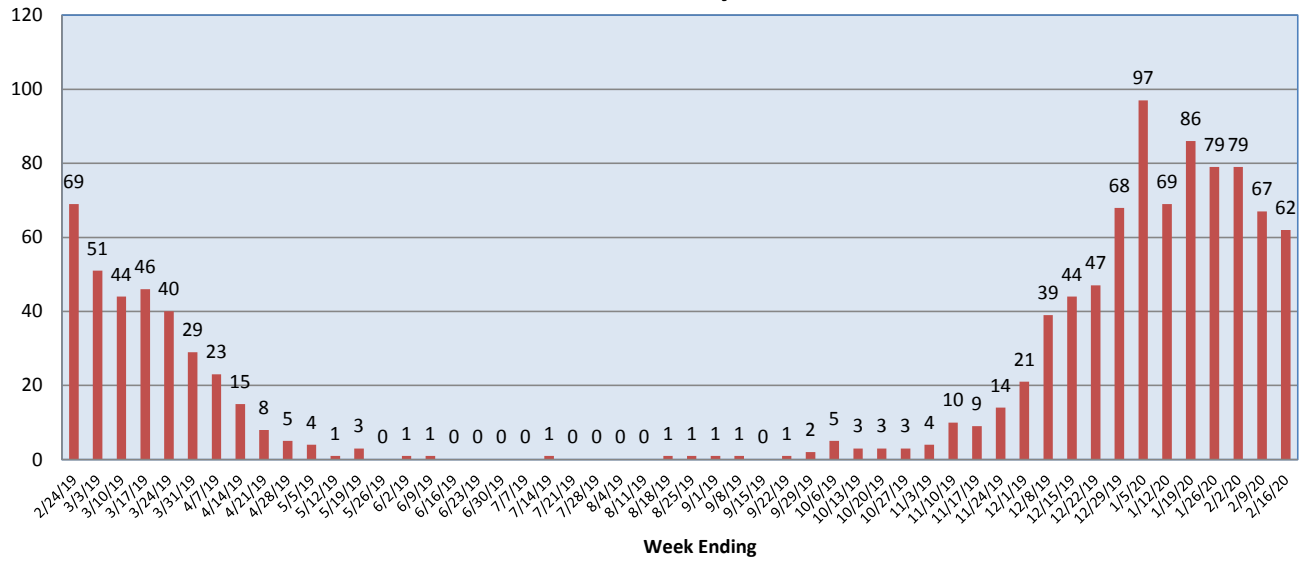


Influenza A and B Positive by Week

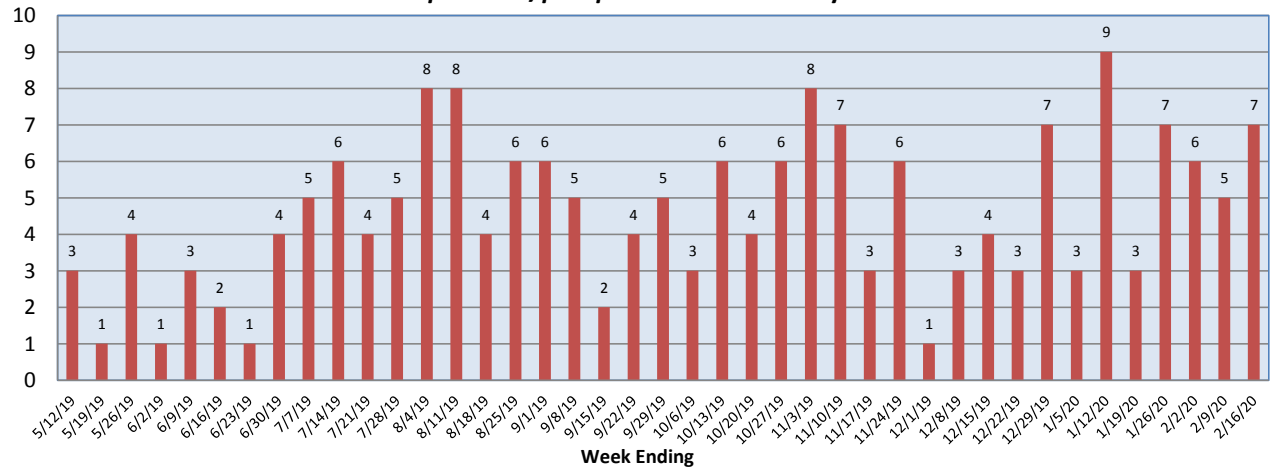


**Rady Children's Hospital Laboratory
Pathogens Report**

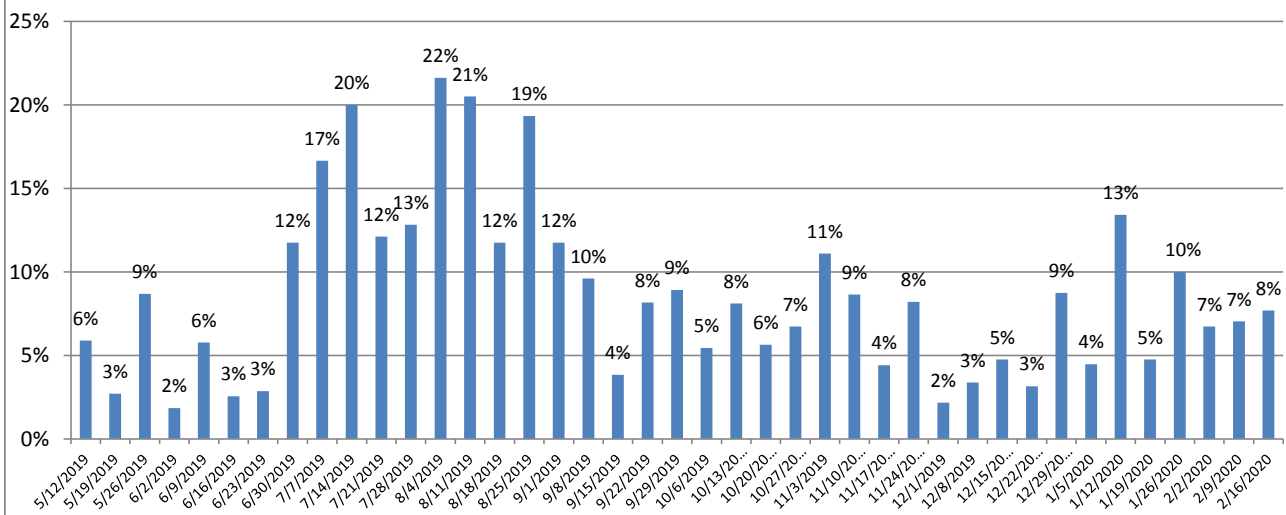
RSV Positive by Week



***B. pertussis/parapertussis* Positives by Week**



***B. pertussis / B. parapertussis* % Positive by Week**



Rady Children's Hospital Laboratory
Pathogens Report

