

Rady Children's Hospital Laboratory Pathogens Report

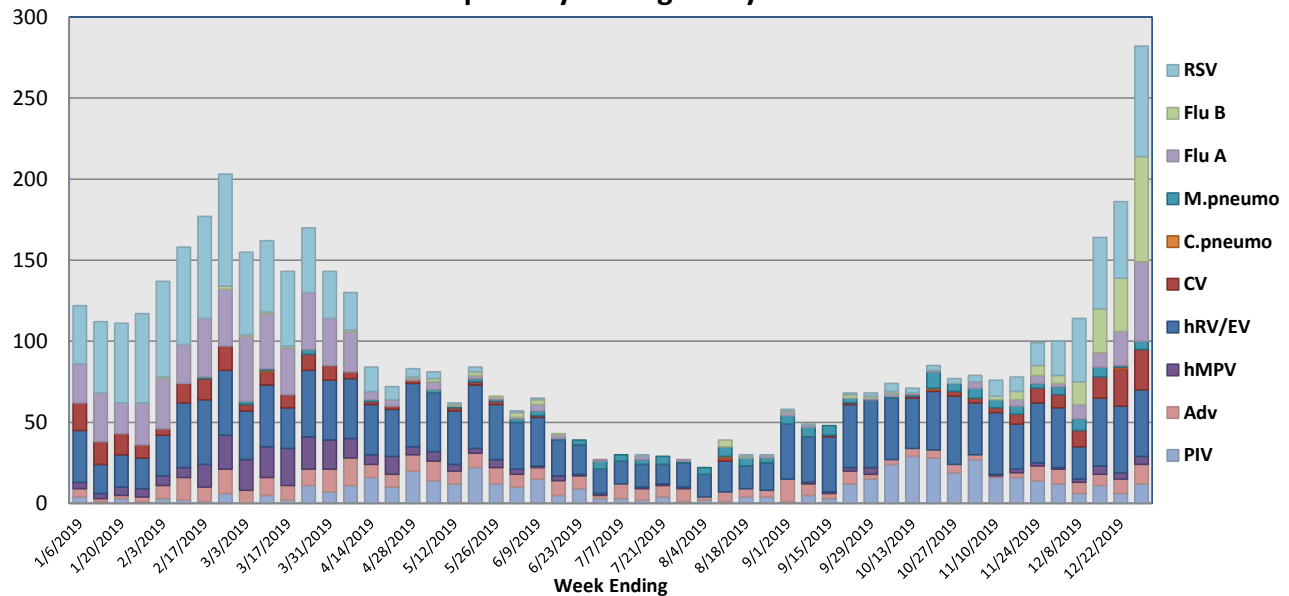
This report is a listing of selected pathogens detected at Rady Children's Hospital Laboratory. The report includes data from locally-collected adult and pediatric specimens.

December 23-29, 2019

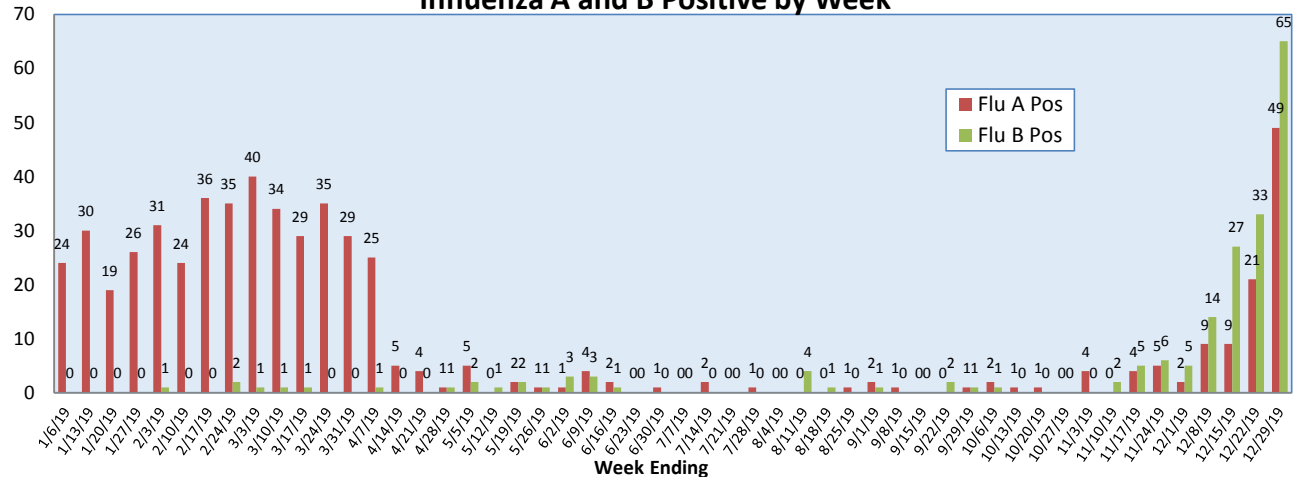
Pathogen	Positive Tests Current Week	Total Tests Current Week	Positive Tests YTD*
RSV	68	444	265
Influenza A	49		105
Influenza B	65		157
Parainfluenza	12		196
Adenovirus	12	170	75
Human Rhinovirus/Enterovirus	41		425
Human Metapneumovirus	5		22
Coronavirus	25		105
Mycoplasma pneumoniae	5		59
Chlamydia pneumoniae	0		2
B. pertussis/parapertussis	7	80	58
Enterovirus, CSF	1	6	8

*From October 7, 2019

Respiratory Pathogens by Week

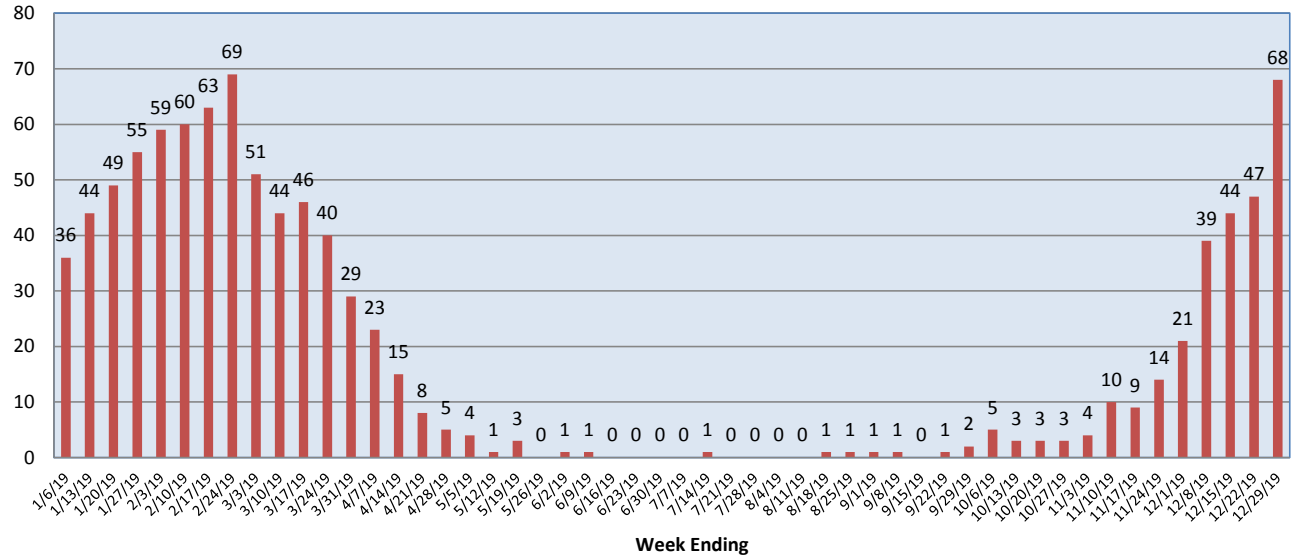


Influenza A and B Positive by Week

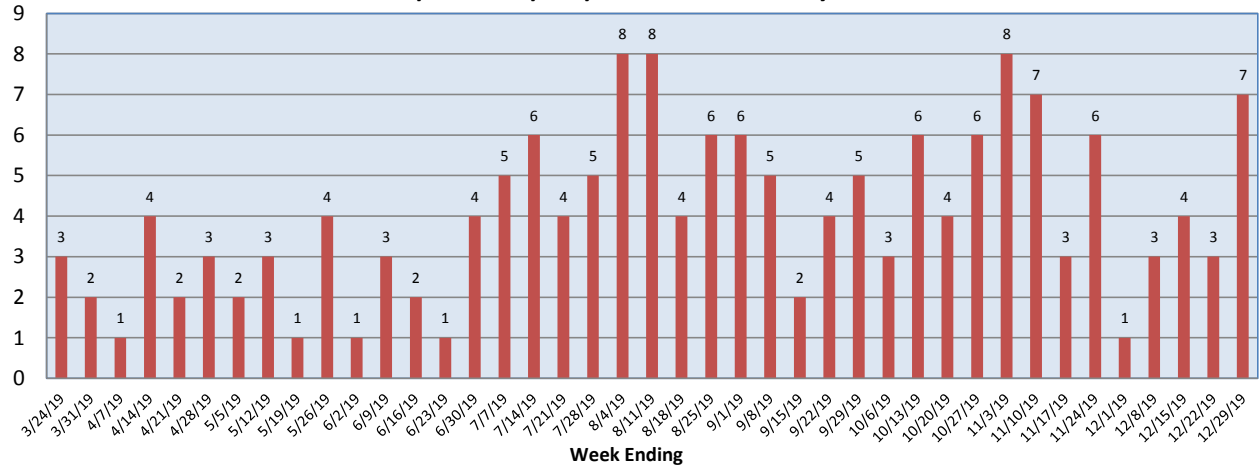


**Rady Children's Hospital Laboratory
Pathogens Report**

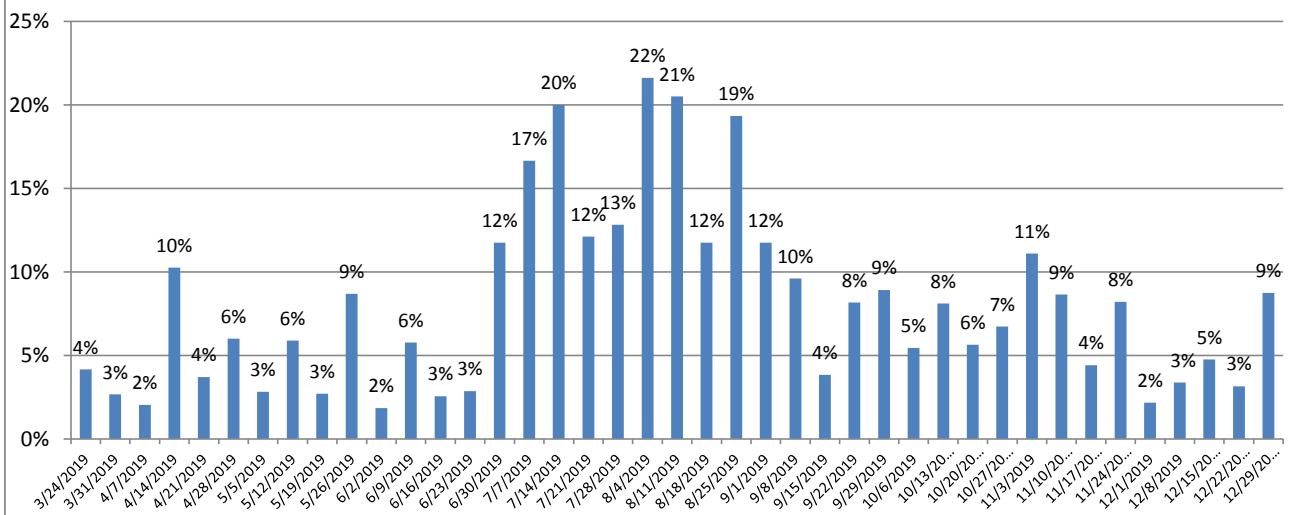
RSV Positive by Week



***B. pertussis/parapertussis* Positives by Week**



***B. pertussis* / *B. parapertussis* % Positive by Week**



Rady Children's Hospital Laboratory
Pathogens Report

