

Rady Children's Hospital Laboratory Pathogens Report

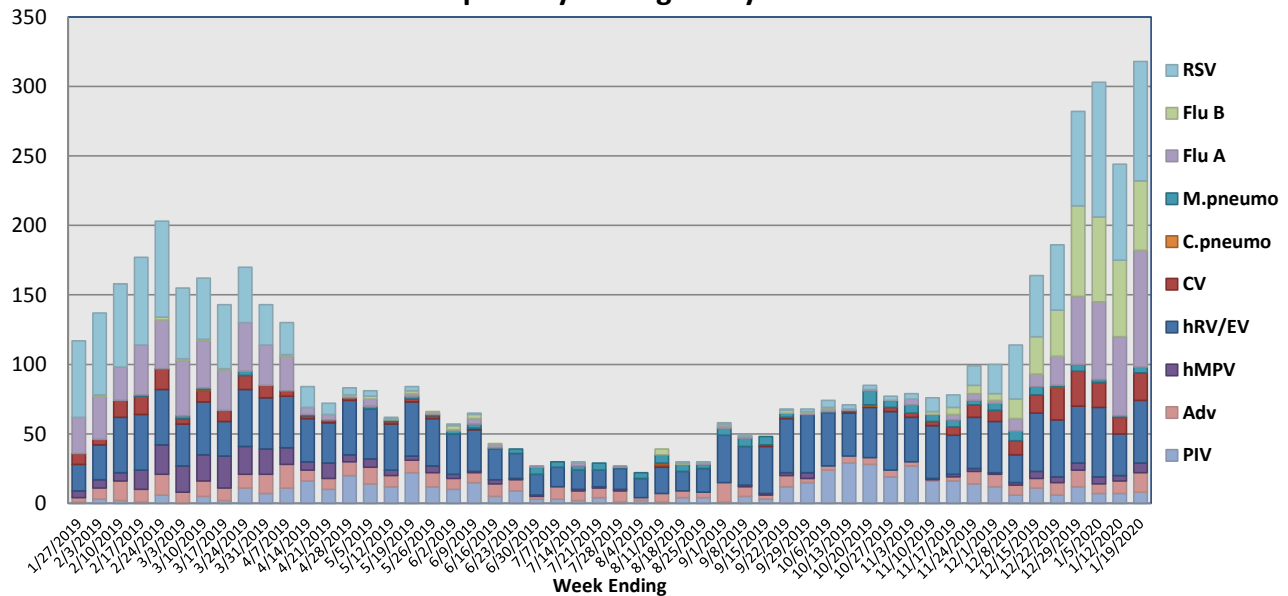
This report is a listing of selected pathogens detected at Rady Children's Hospital Laboratory. The report includes data from locally-collected adult and pediatric specimens.

January 13-19, 2020

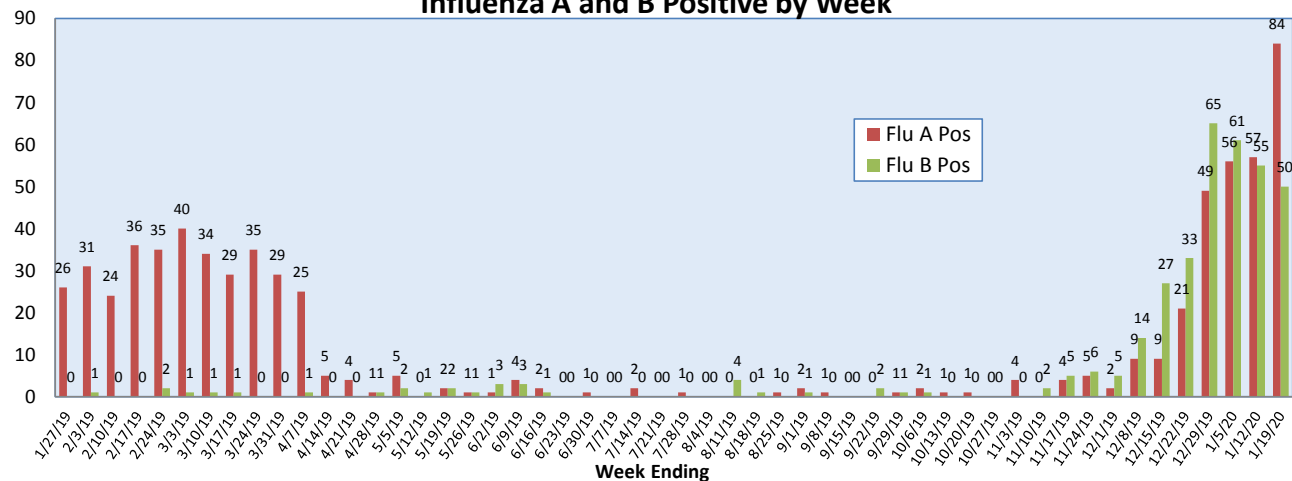
Pathogen	Positive Tests Current Week	Total Tests Current Week	Positive Tests YTD*
RSV	86	489	517
Influenza A	84		302
Influenza B	50		323
Parainfluenza	8		218
Adenovirus	14	190	105
Human Rhinovirus/Enterovirus	45		550
Human Metapneumovirus	7		38
Coronavirus	20		155
Mycoplasma pneumoniae	4		66
Chlamydia pneumoniae	0		2
B. pertussis/parapertussis	3	63	73
Enterovirus, CSF	0	3	8

*From October 7, 2019

Respiratory Pathogens by Week

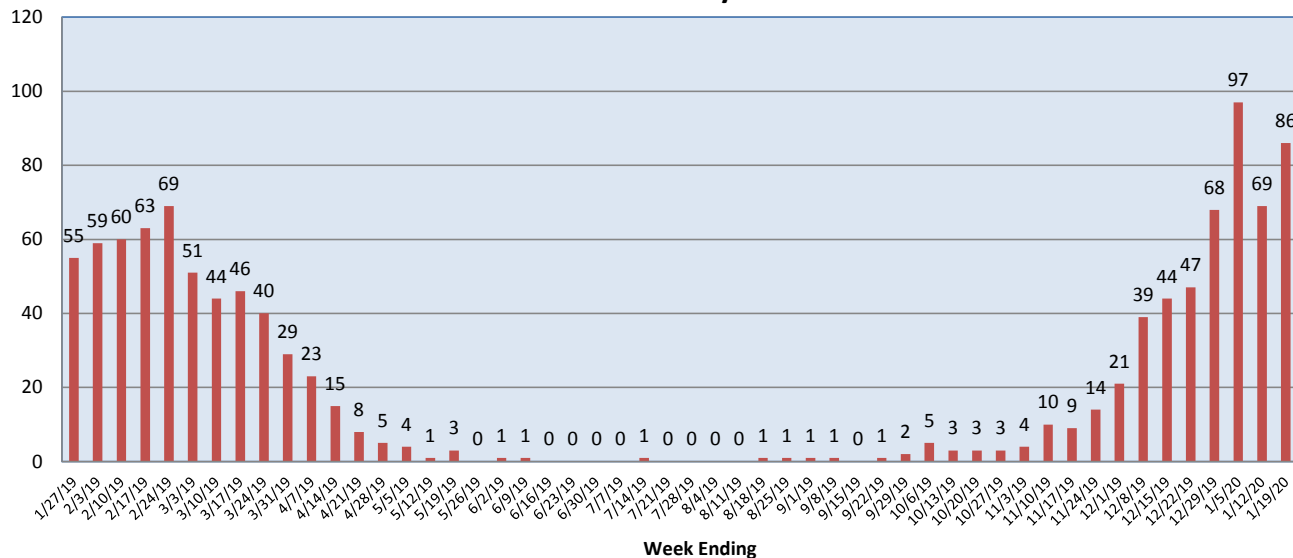


Influenza A and B Positive by Week

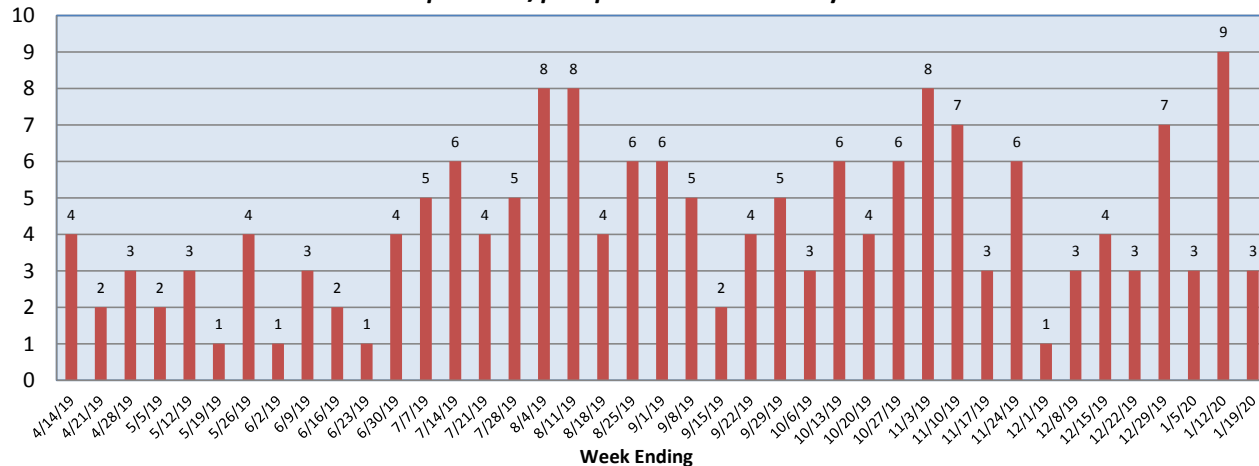


**Rady Children's Hospital Laboratory
Pathogens Report**

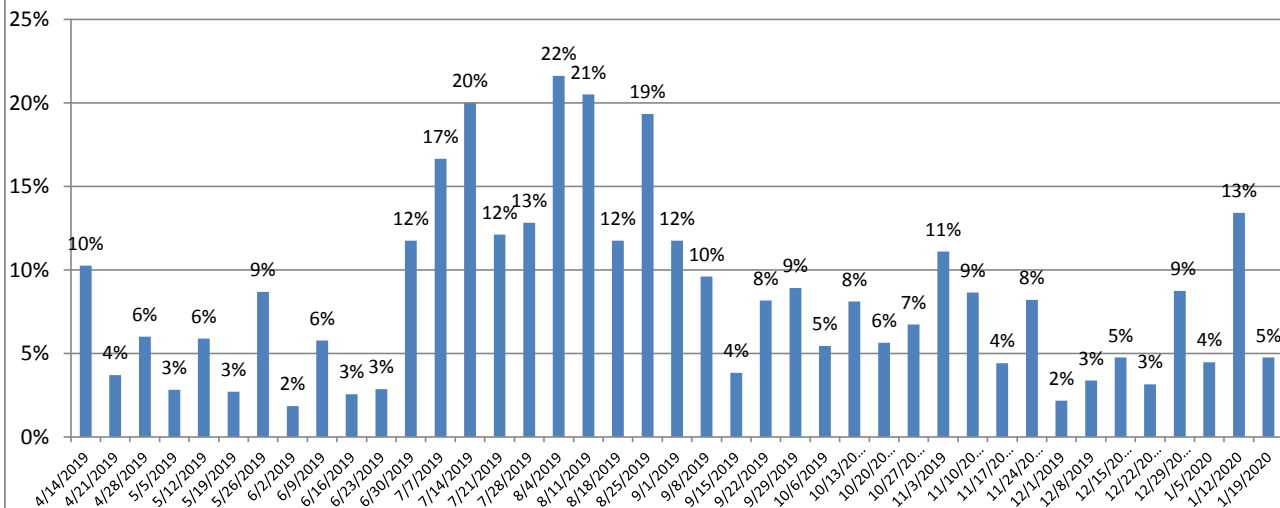
RSV Positive by Week



***B. pertussis/parapertussis* Positives by Week**



***B. pertussis / B. parapertussis* % Positive by Week**



Rady Children's Hospital Laboratory
Pathogens Report

