

Rady Children's Hospital Laboratory Pathogens Report

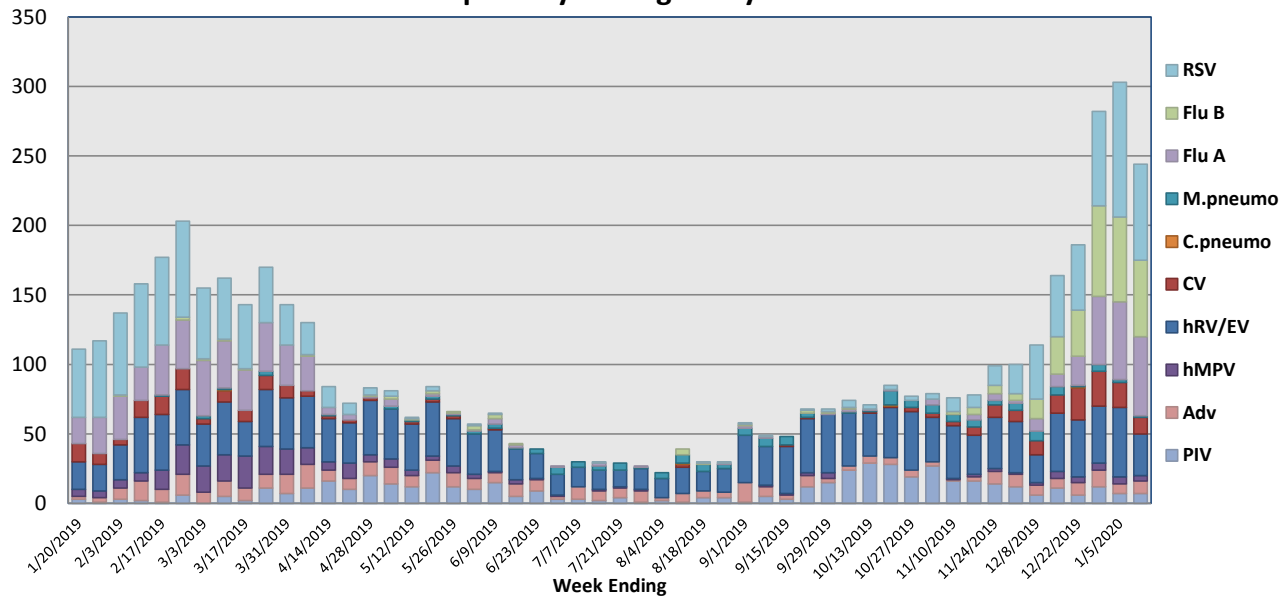
This report is a listing of selected pathogens detected at Rady Children's Hospital Laboratory. The report includes data from locally-collected adult and pediatric specimens.

January 6-12, 2020

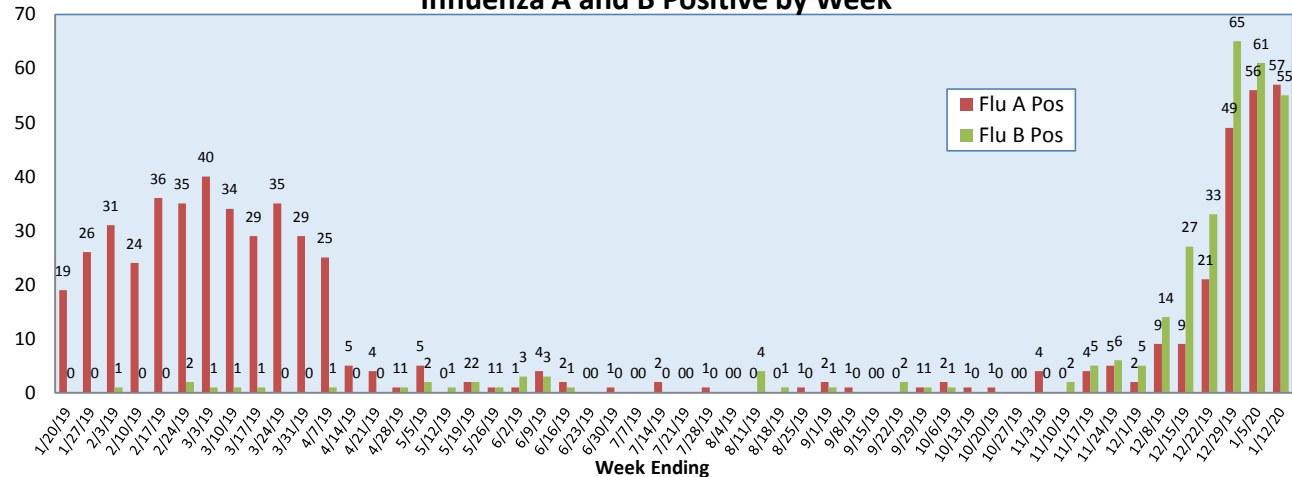
Pathogen	Positive Tests Current Week	Total Tests Current Week	Positive Tests YTD*
RSV	69	403	431
Influenza A	57		218
Influenza B	55		273
Parainfluenza	7		210
Adenovirus	9	136	91
Human Rhinovirus/Enterovirus	30		505
Human Metapneumovirus	4		31
Coronavirus	12		135
Mycoplasma pneumoniae	1		62
Chlamydia pneumoniae	0		2
B. pertussis/parapertussis	9	67	70
Enterovirus, CSF	0	3	8

*From October 7, 2019

Respiratory Pathogens by Week

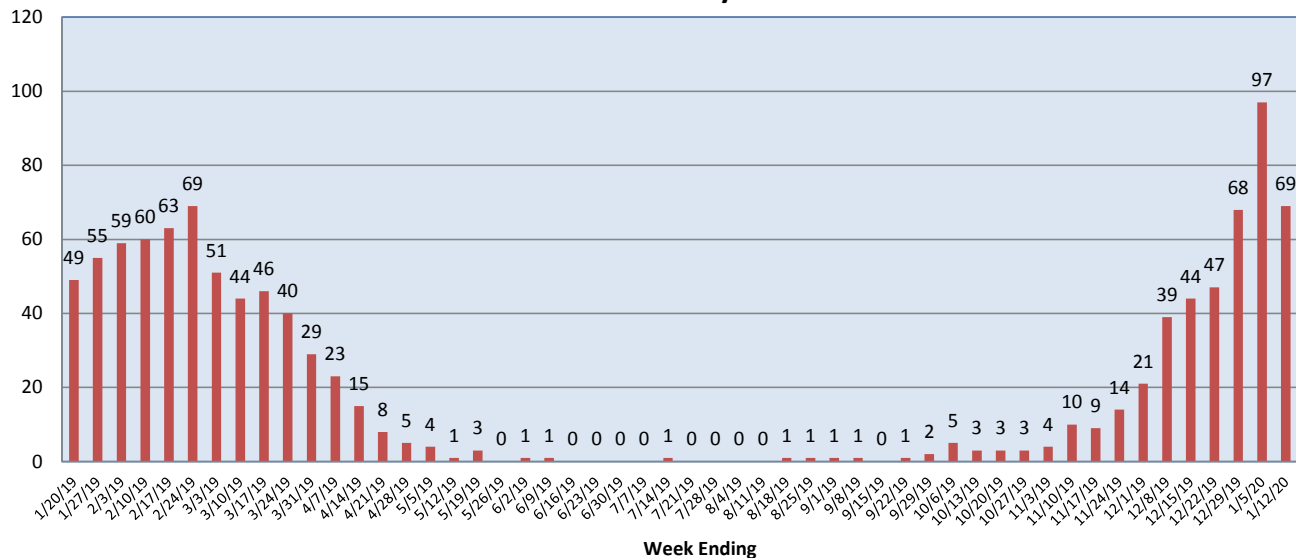


Influenza A and B Positive by Week

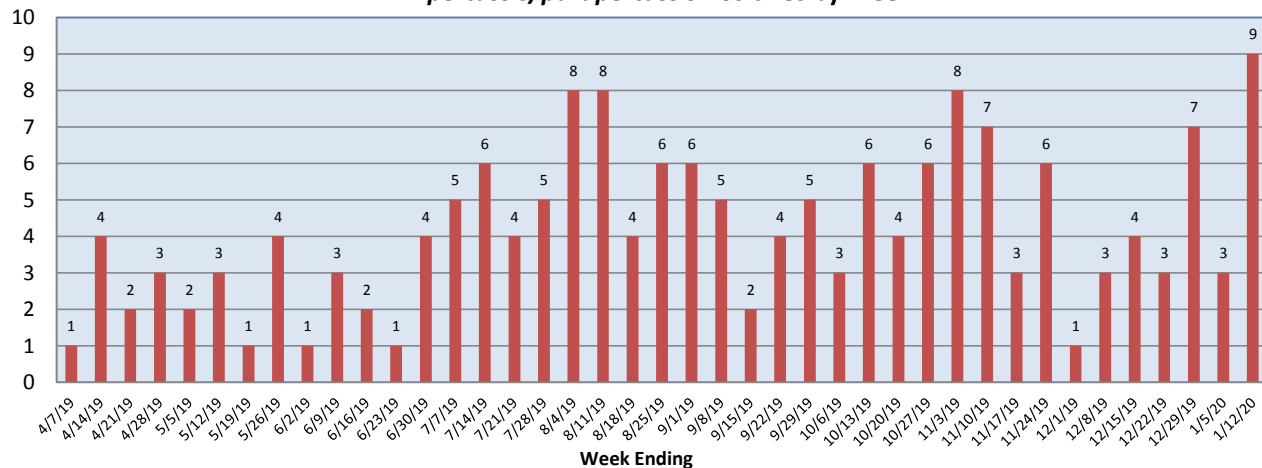


**Rady Children's Hospital Laboratory
Pathogens Report**

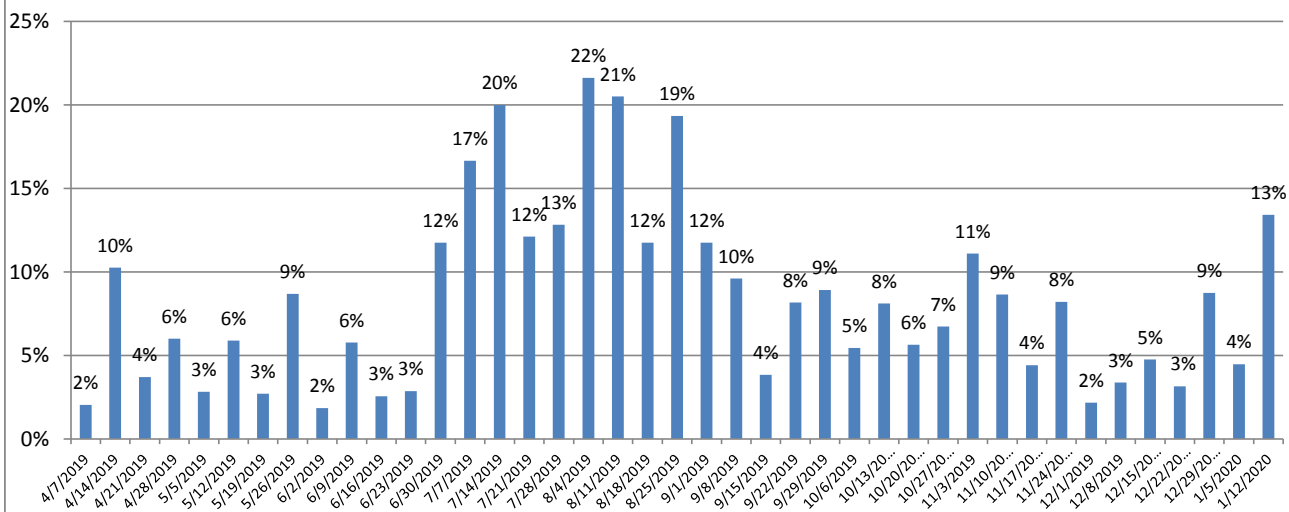
RSV Positive by Week



***B. pertussis/parapertussis* Positives by Week**



***B. pertussis / B. parapertussis* % Positive by Week**



Rady Children's Hospital Laboratory
Pathogens Report

