

Rady Children's Hospital Laboratory Pathogens Report

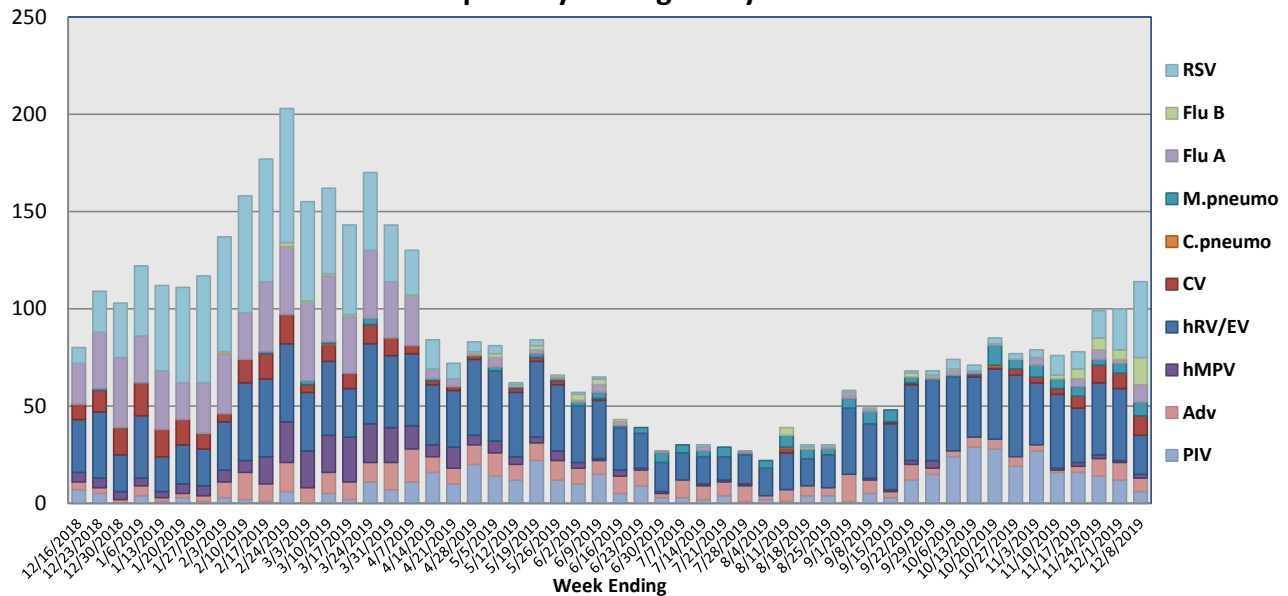
This report is a listing of selected pathogens detected at Rady Children's Hospital Laboratory. The report includes data from locally-collected adult and pediatric specimens.

December 2-8, 2019

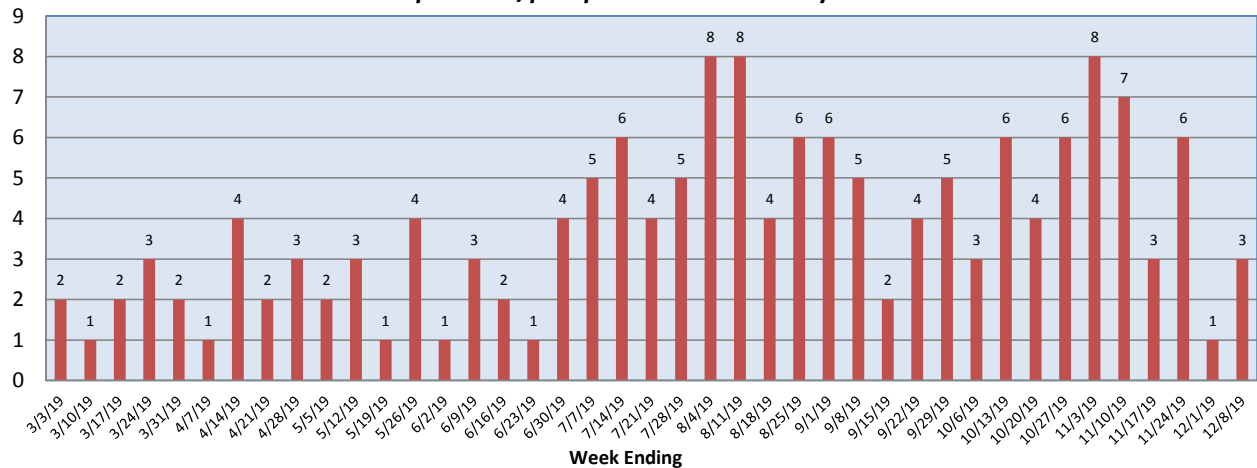
Pathogen	Positive Tests Current Week	Total Tests Current Week	Positive Tests YTD*
RSV	39	234	106
Influenza A	9		26
Influenza B	14		32
Parainfluenza	6		167
Adenovirus	7	120	47
Human Rhinovirus/Enterovirus	20		301
Human Metapneumovirus	2		8
Coronavirus	10		44
Mycoplasma pneumoniae	7		47
Chlamydia pneumoniae	0		1
B. pertussis/parapertussis	3	89	44
Enterovirus, CSF	1	4	7

*From October 7, 2019

Respiratory Pathogens by Week

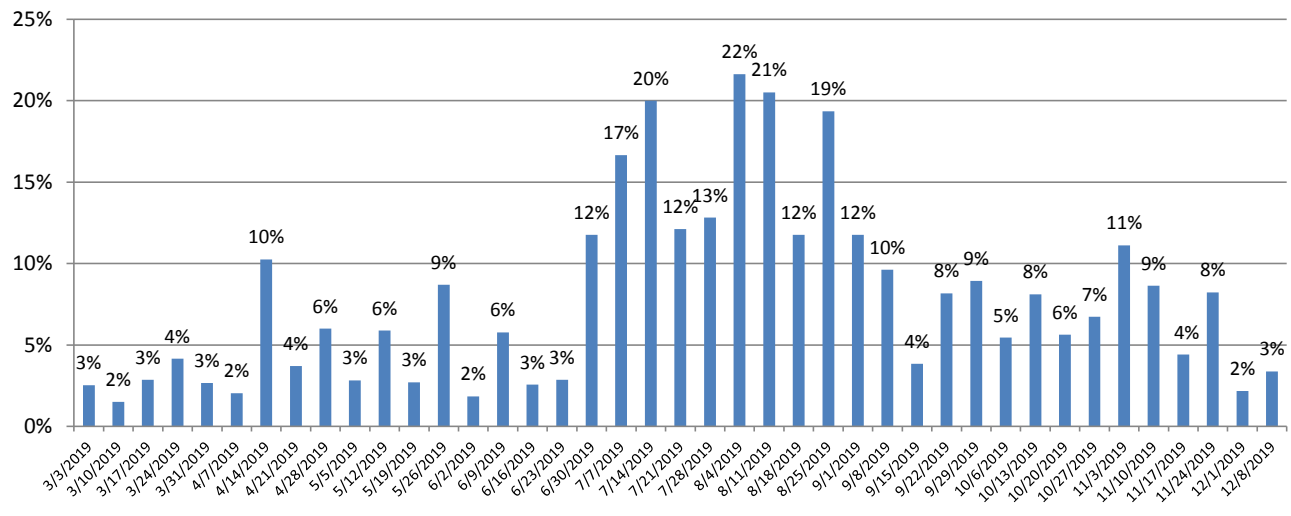


B. pertussis/parapertussis Positives by Week

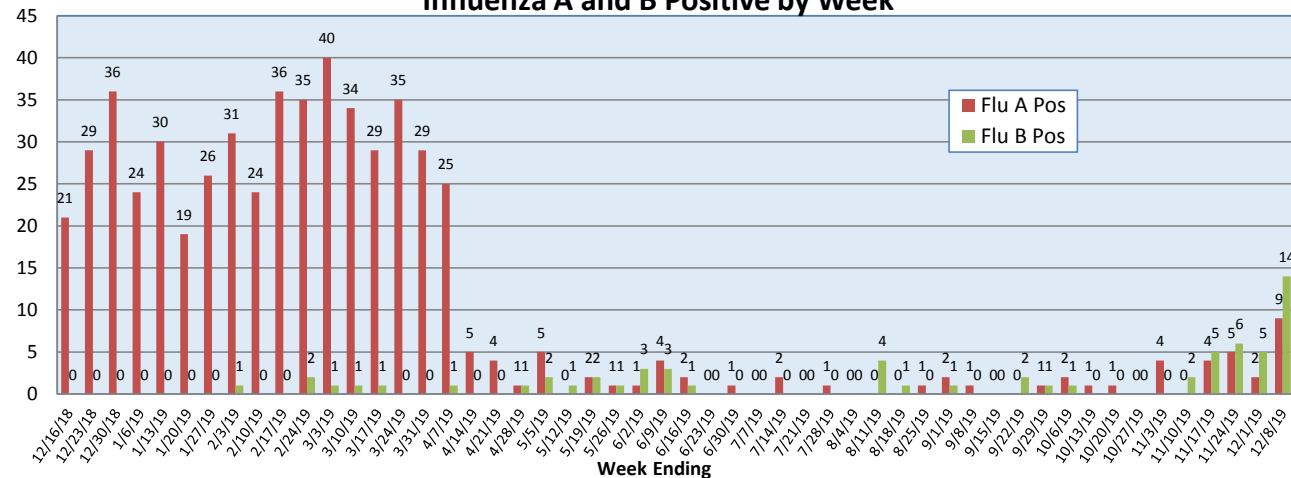


Rady Children's Hospital Laboratory Pathogens Report

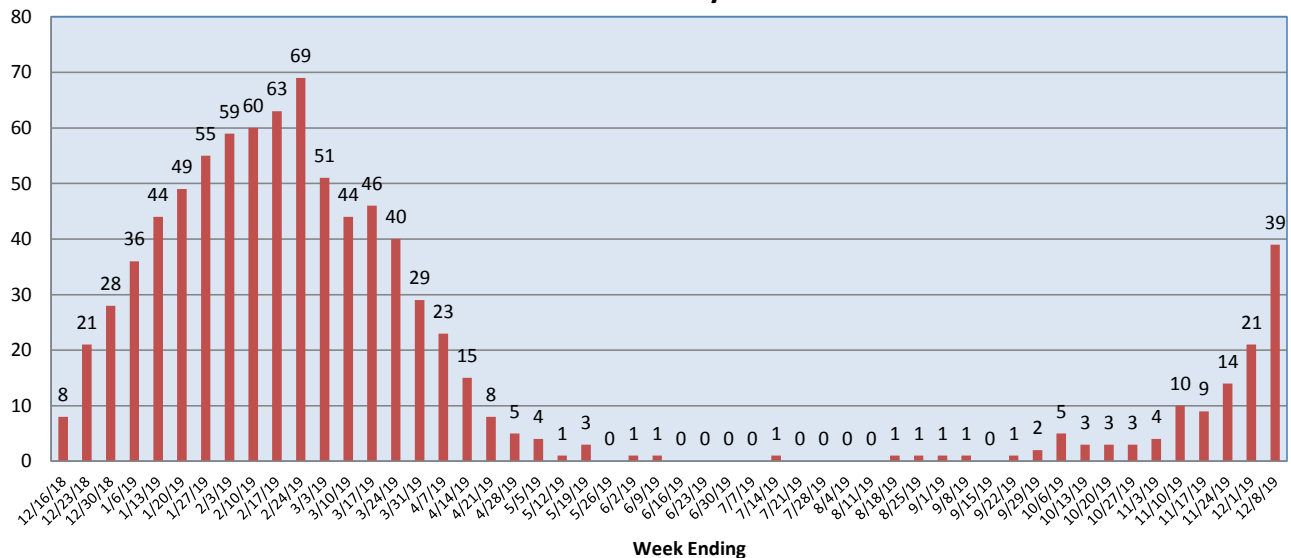
B.pertussis / *B.parapertussis* % Positive by Week



Influenza A and B Positive by Week



RSV Positive by Week



Rady Children's Hospital Laboratory
Pathogens Report

