

# Rady Children's Hospital Laboratory Pathogens Report

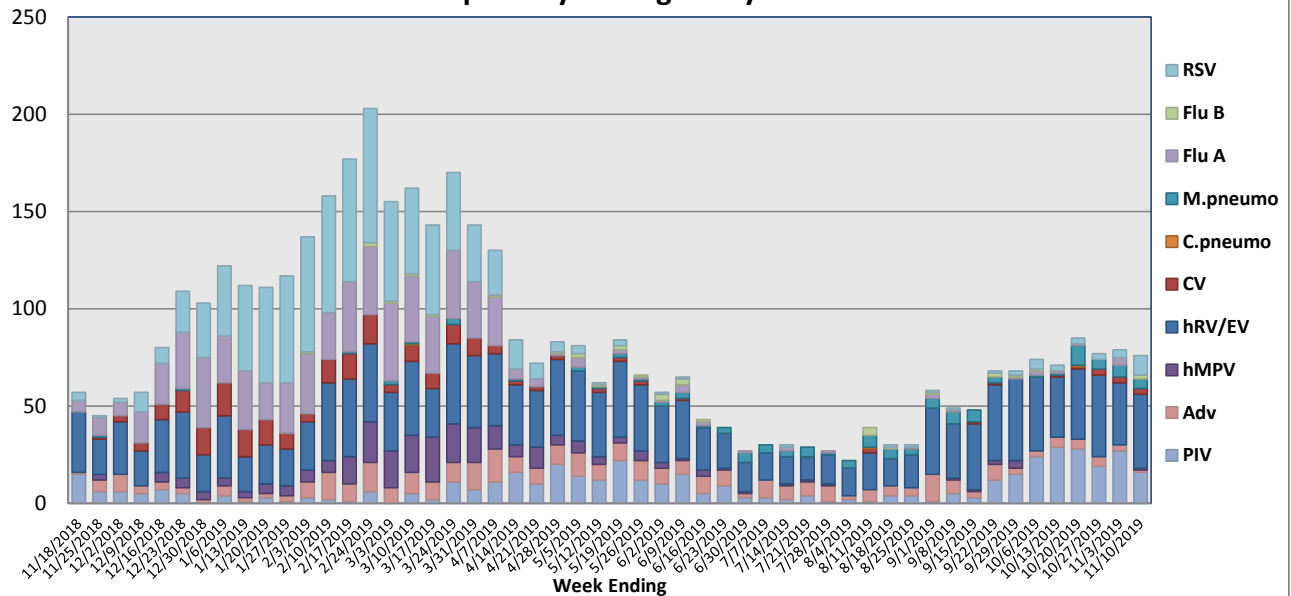
This report is a listing of selected pathogens detected at Rady Children's Hospital Laboratory. The report includes data from locally-collected adult and pediatric specimens.

November 4-10, 2019

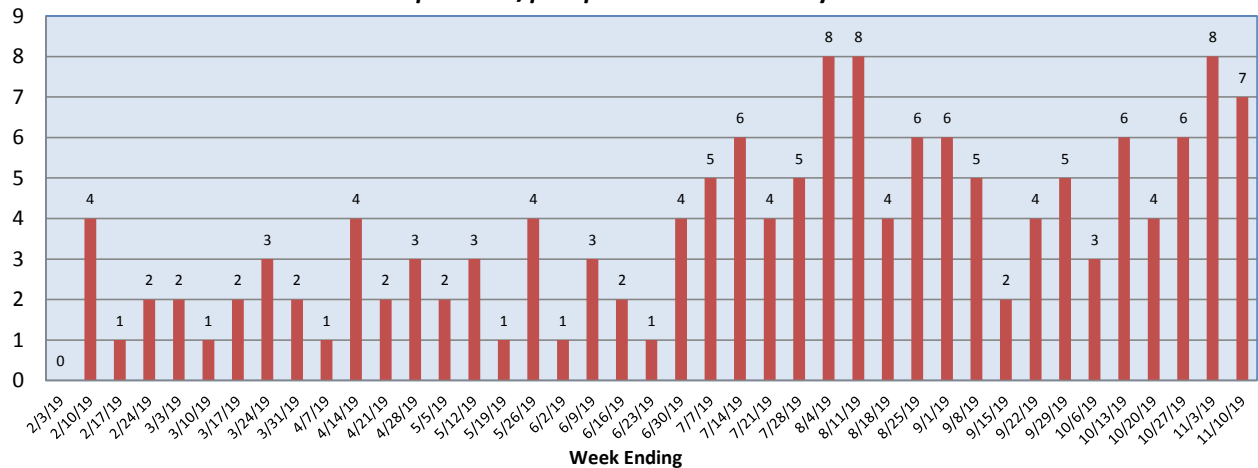
Pathogen	Positive Tests Current Week	Total Tests Current Week	Positive Tests YTD*
RSV	10	161	23
Influenza A	0		6
Influenza B	2		2
Parainfluenza	16	103	119
Adenovirus	1		19
Human Rhinovirus/Enterovirus	38		179
Human Metapneumovirus	1		1
Coronavirus	3		11
Mycoplasma pneumoniae	5		27
Chlamydia pneumoniae	0		1
B. pertussis/parapertussis	7	81	31
Enterovirus, CSF	0	4	6

\*From October 7, 2019

## Respiratory Pathogens by Week

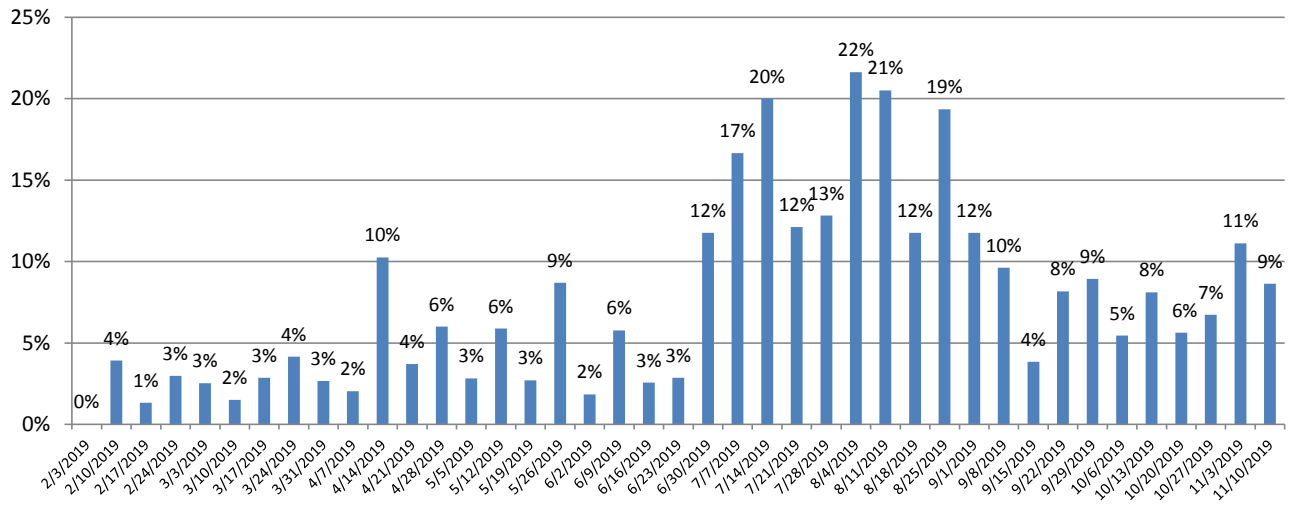


## B. pertussis/parapertussis Positives by Week

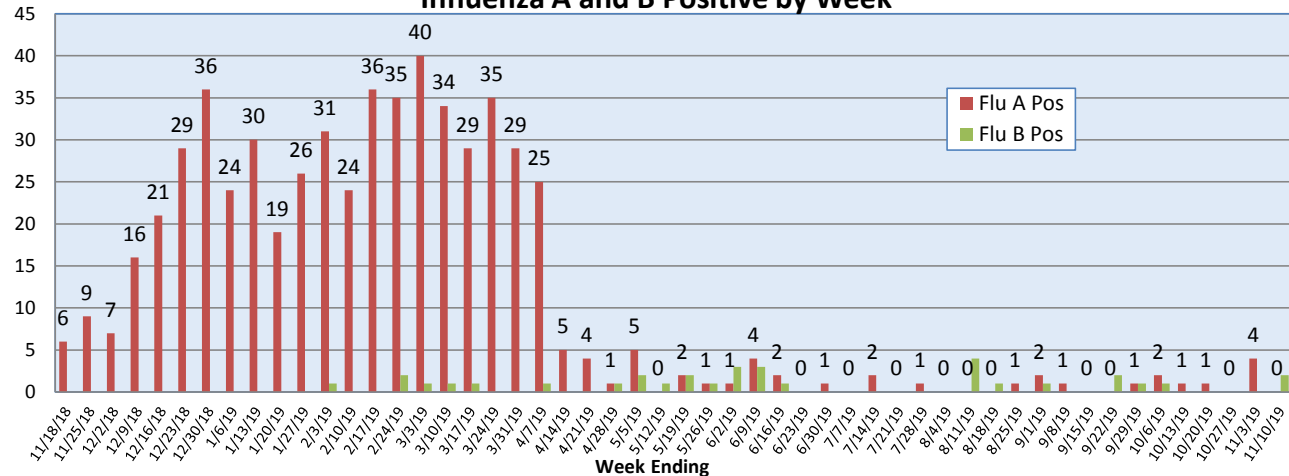


# Rady Children's Hospital Laboratory Pathogens Report

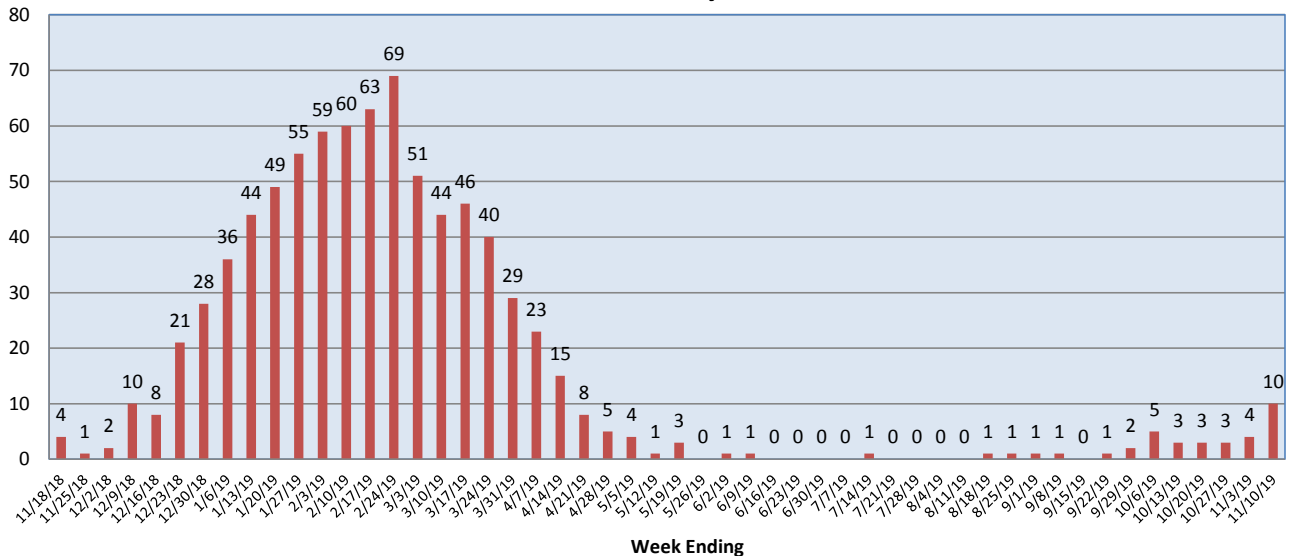
## *B.pertussis* / *B.parapertussis* % Positive by Week



## Influenza A and B Positive by Week



## RSV Positive by Week



Rady Children's Hospital Laboratory  
Pathogens Report

