

Rady Children's Hospital Laboratory Pathogens Report

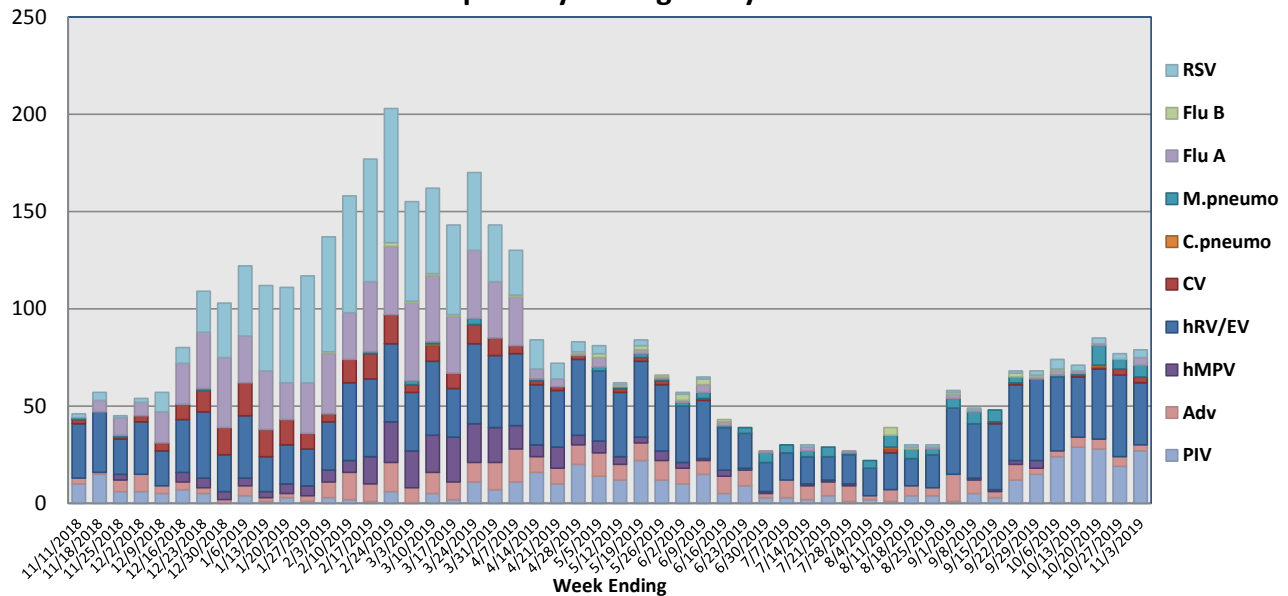
This report is a listing of selected pathogens detected at Rady Children's Hospital Laboratory. The report includes data from locally-collected adult and pediatric specimens.

October 28 - November 3, 2019

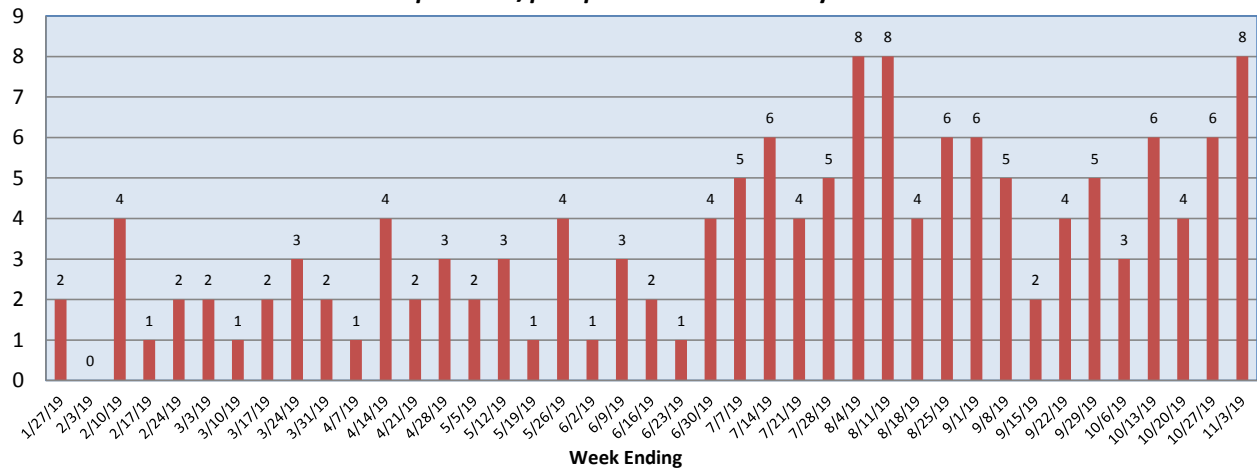
Pathogen	Positive Tests Current Week	Total Tests Current Week	Positive Tests YTD*
RSV	4	210	13
Influenza A	4		6
Influenza B	0		0
Parainfluenza	27	131	103
Adenovirus	3		18
Human Rhinovirus/Enterovirus	32		141
Human Metapneumovirus	0		0
Coronavirus	3		8
Mycoplasma pneumoniae	6		22
Chlamydia pneumoniae	0		1
B. pertussis/parapertussis	8	72	24
Enterovirus, CSF	2	8	6

*From October 7, 2019

Respiratory Pathogens by Week

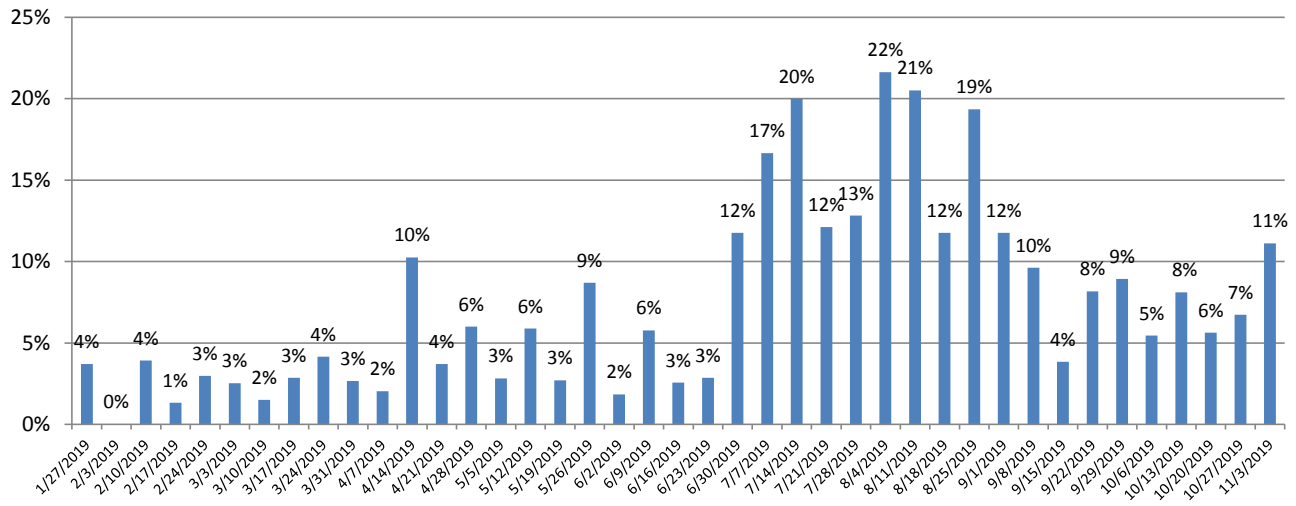


B. pertussis/parapertussis Positives by Week

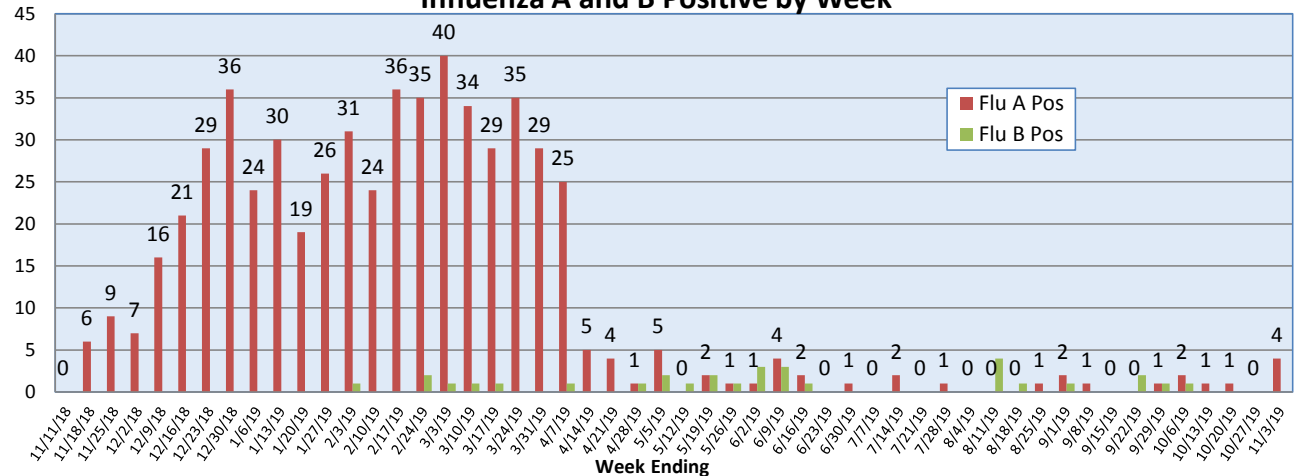


**Rady Children's Hospital Laboratory
Pathogens Report**

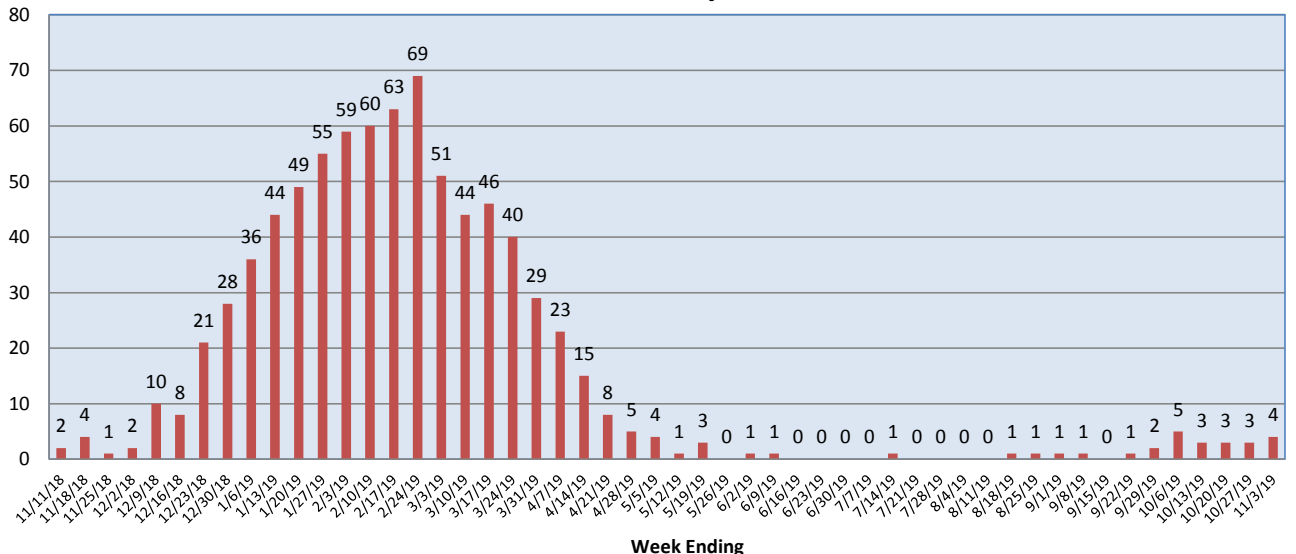
***B.pertussis* / *B.parapertussis* % Positive by Week**



Influenza A and B Positive by Week



RSV Positive by Week



Rady Children's Hospital Laboratory
Pathogens Report

