

# Rady Children's Hospital Laboratory Pathogens Report

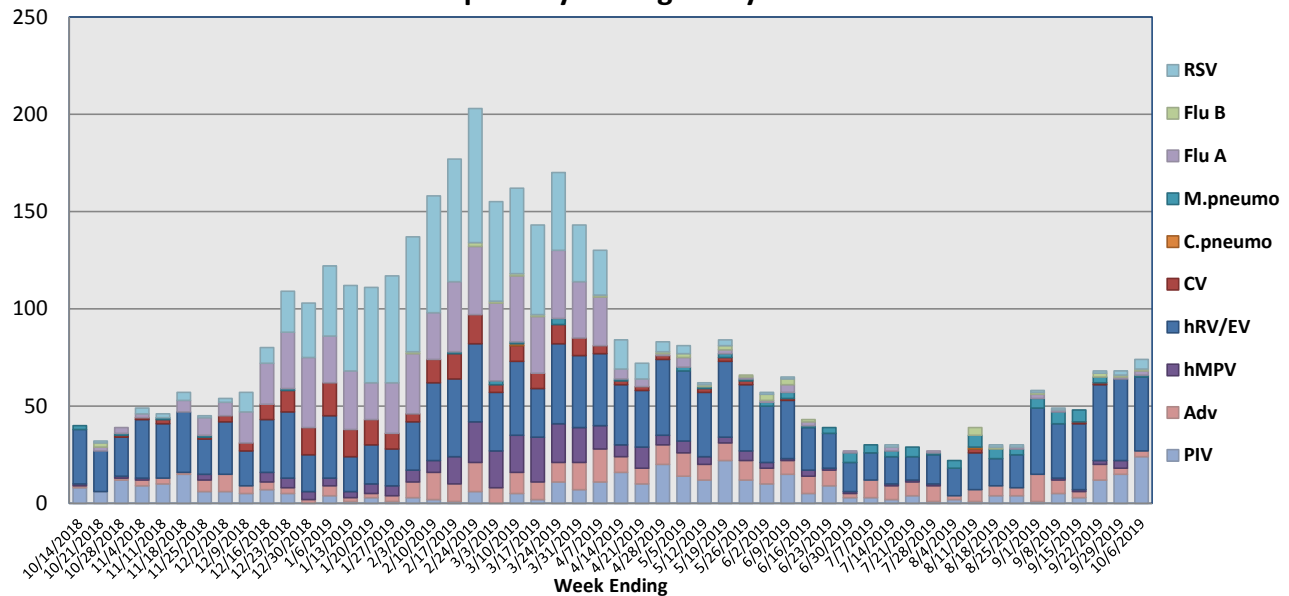
This report is a listing of selected pathogens detected at Rady Children's Hospital Laboratory. The report includes data from locally collected adult and pediatric specimens.

September 30 - October 6, 2019

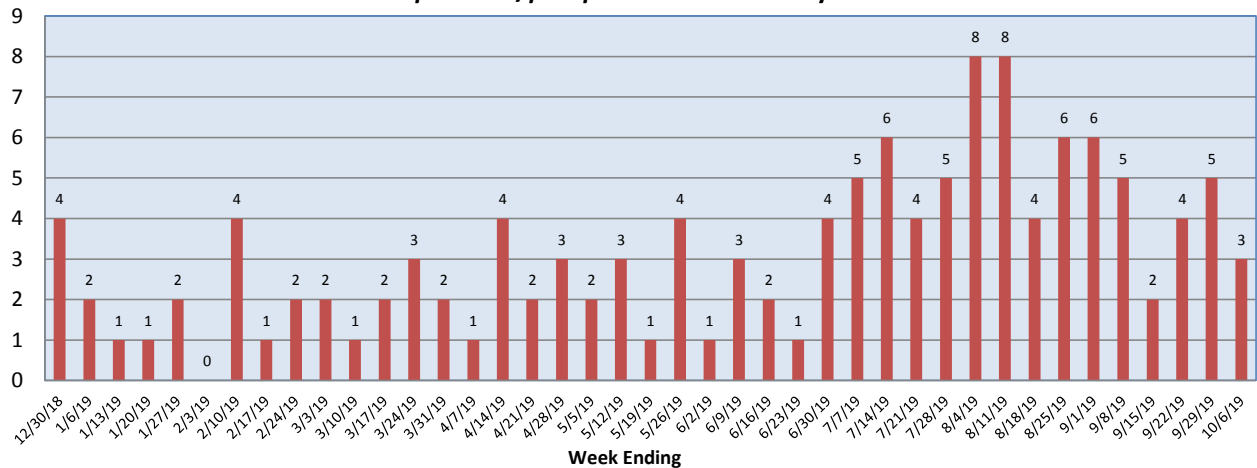
Pathogen	Positive Tests Current Week	Total Tests Current Week	Positive Tests YTD*
RSV	5	161	799
Influenza A	2		584
Influenza B	1		33
Parainfluenza	24	115	375
Adenovirus	3		349
Human Rhinovirus/Enterovirus	38		1432
Human Metapneumovirus	0		255
Coronavirus	0		201
Mycoplasma pneumoniae	1		86
Chlamydia pneumoniae	0		2
B. pertussis/parapertussis	3	55	144
Enterovirus, CSF	1	8	36

\*From October 8, 2018

## Respiratory Pathogens by Week

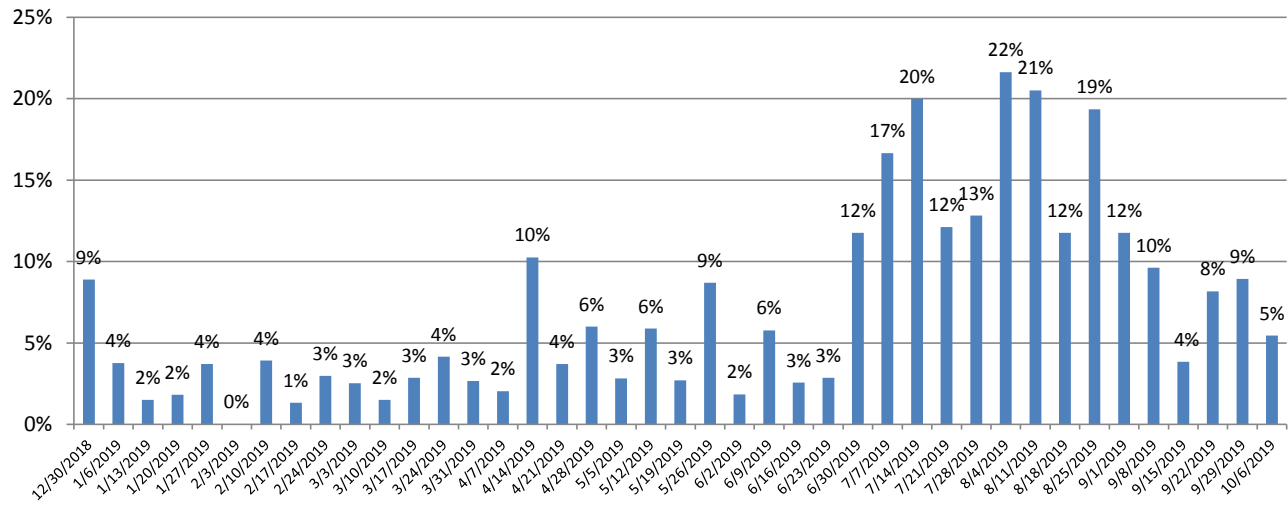


## B. pertussis/parapertussis Positives by Week

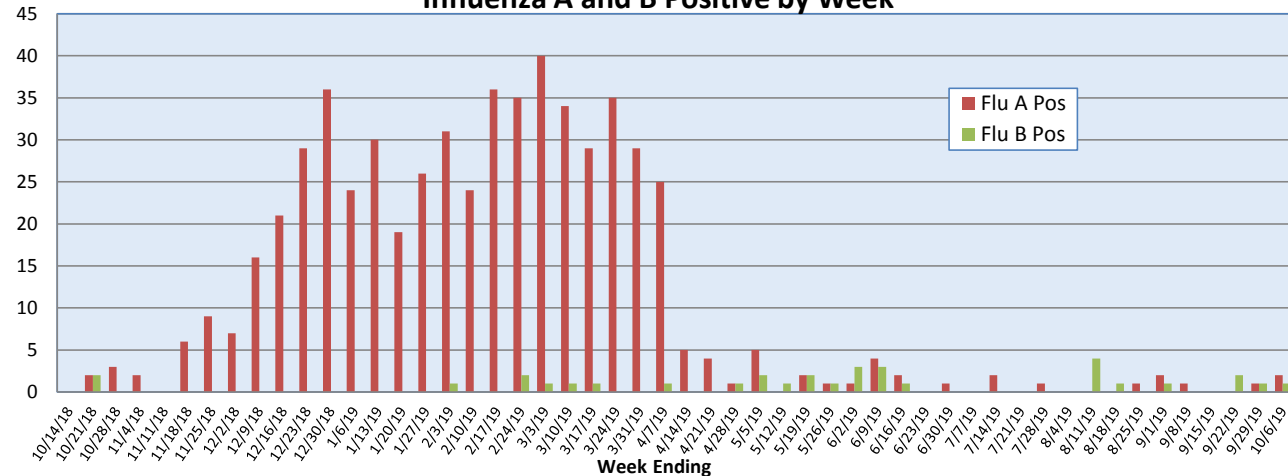


# Rady Children's Hospital Laboratory Pathogens Report

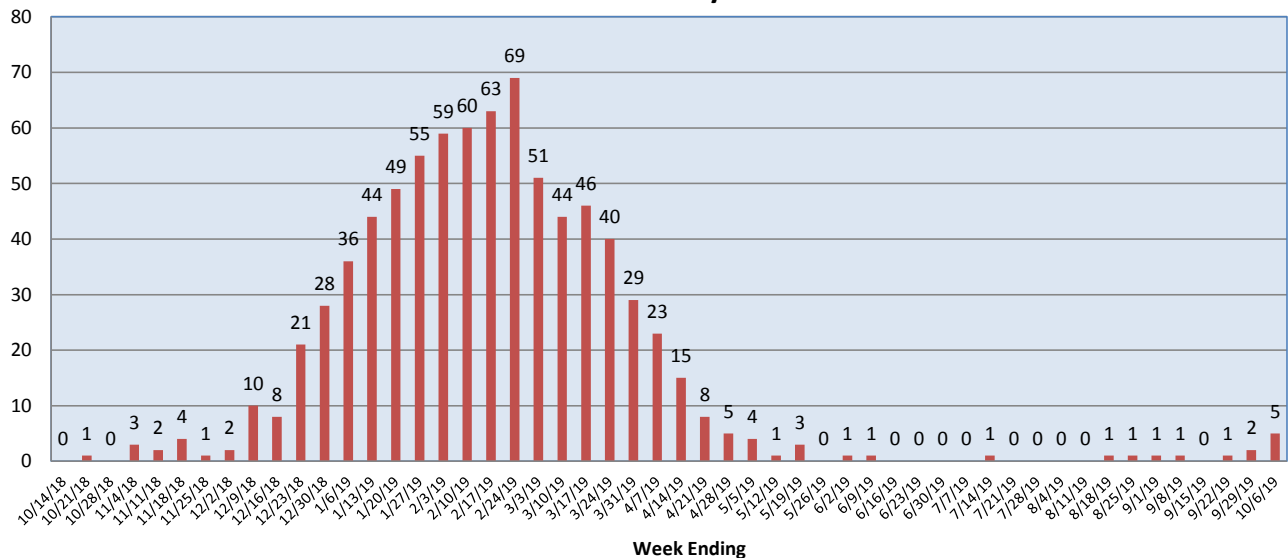
## *B.pertussis* / *B.parapertussis* % Positive by Week



## Influenza A and B Positive by Week



## RSV Positive by Week



Rady Children's Hospital Laboratory  
Pathogens Report

