

Rady Children's Hospital Laboratory Pathogens Report

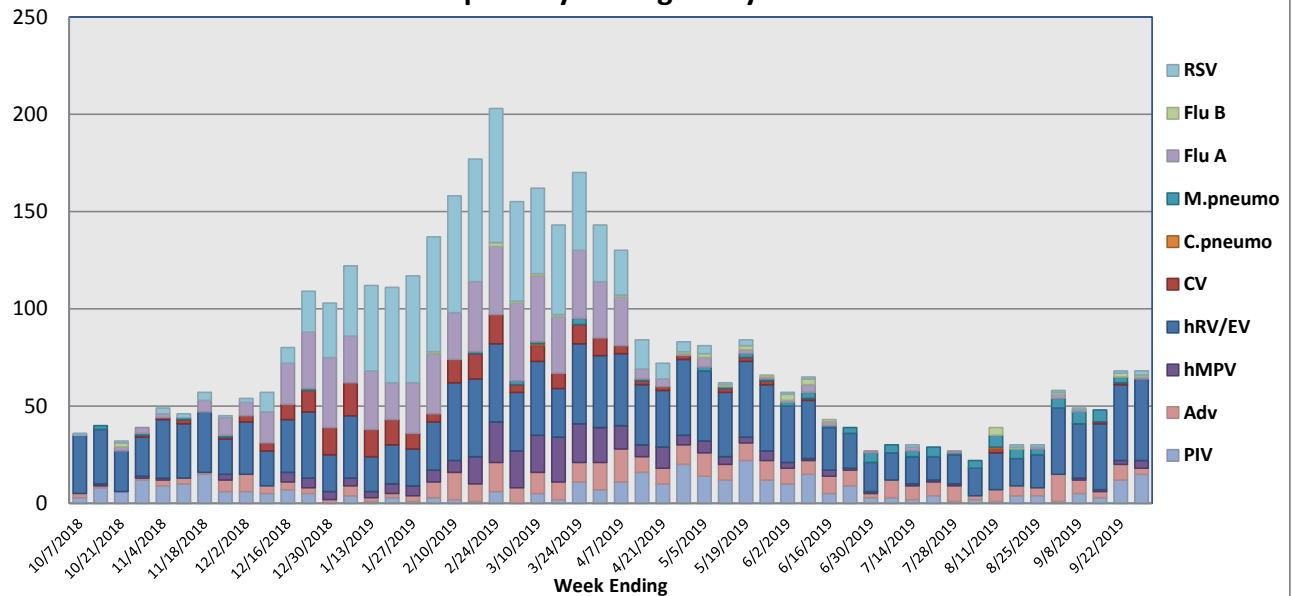
This report is a listing of selected pathogens detected at Rady Children's Hospital Laboratory. The report includes data from locally collected adult and pediatric specimens.

September 23-29, 2019

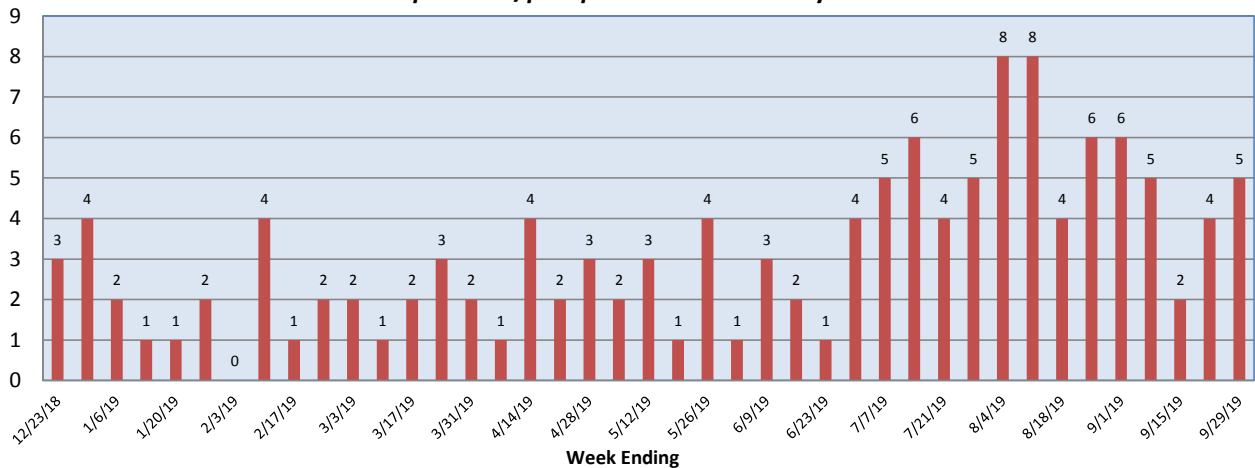
Pathogen	Positive Tests Current Week	Total Tests Current Week	Positive Tests YTD*
RSV	2	163	794
Influenza A	1		582
Influenza B	1		32
Parainfluenza	15	117	351
Adenovirus	3		346
Human Rhinovirus/Enterovirus	42		1394
Human Metapneumovirus	4		255
Coronavirus	0		201
Mycoplasma pneumoniae	0		85
Chlamydia pneumoniae	0		2
B. pertussis/parapertussis	5	56	141
Enterovirus, CSF	2	4	35

*From October 8, 2018

Respiratory Pathogens by Week

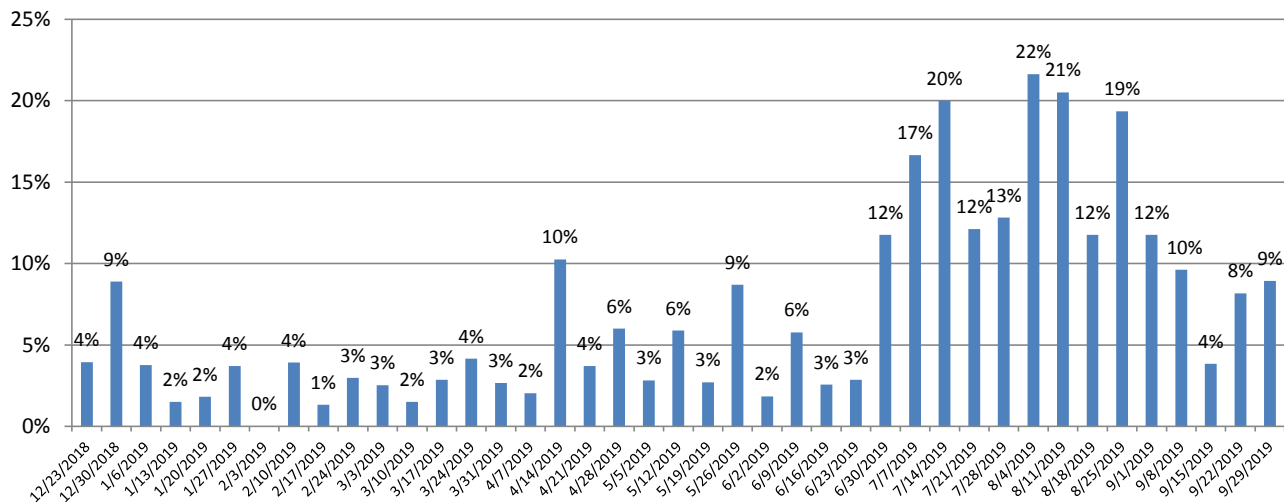


B. pertussis/parapertussis Positives by Week

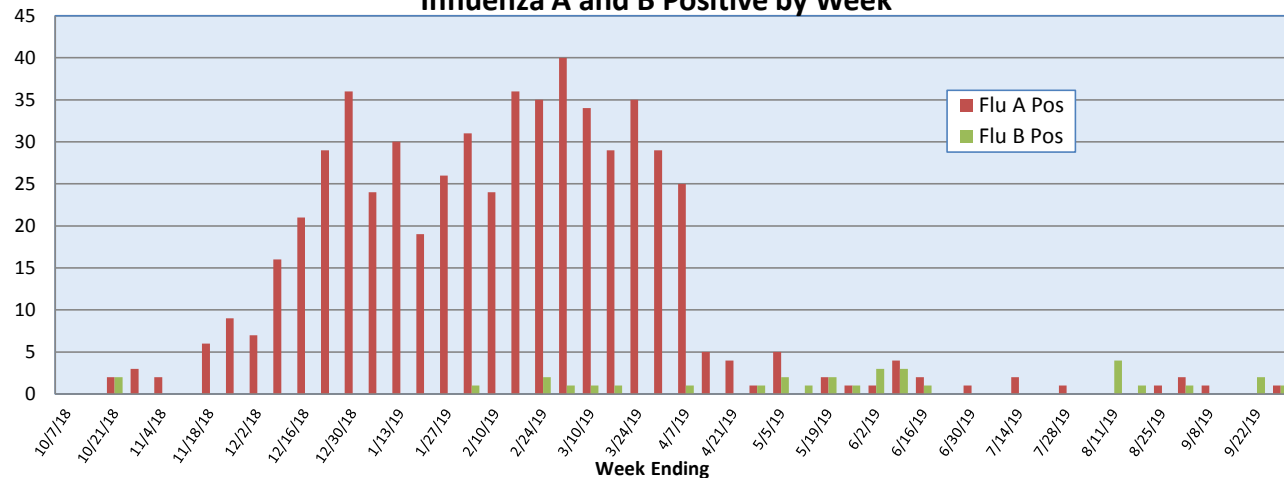


**Rady Children's Hospital Laboratory
Pathogens Report**

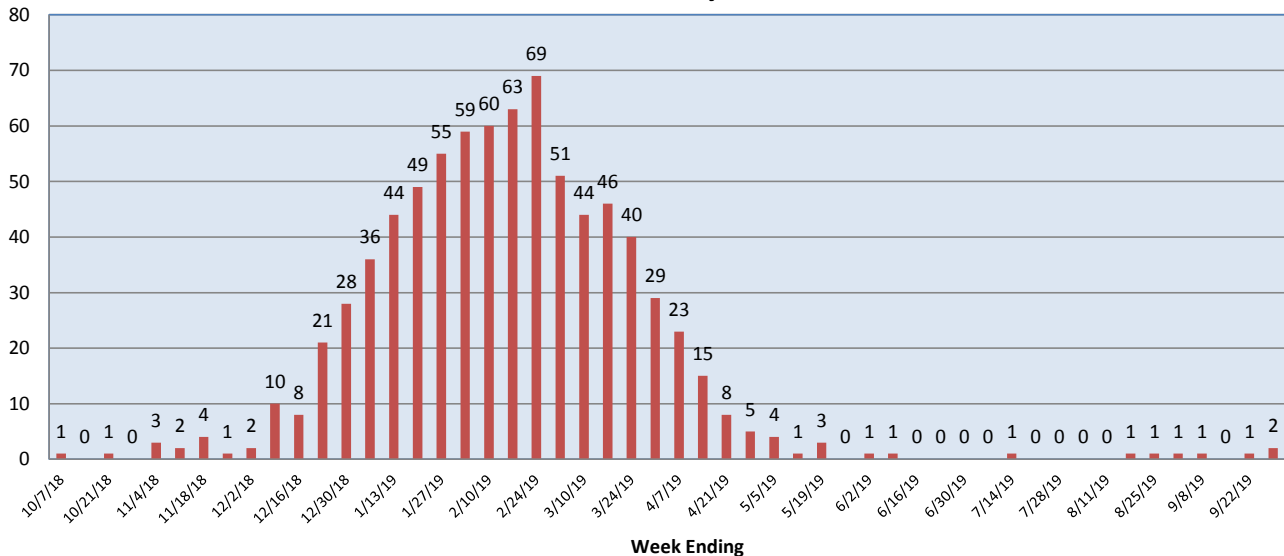
***B.pertussis* / *B.parapertussis* % Positive by Week**



Influenza A and B Positive by Week



RSV Positive by Week



Rady Children's Hospital Laboratory
Pathogens Report

