

## Rady Children's Hospital Laboratory Pathogens Report

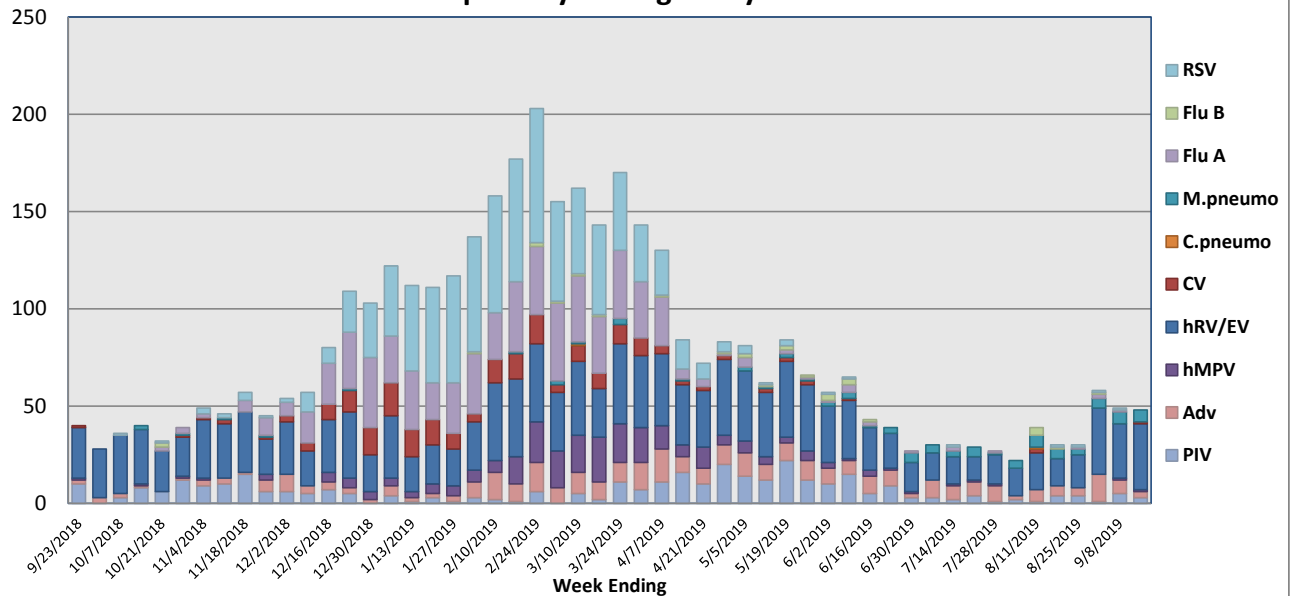
This report is a listing of selected pathogens detected at Rady Children's Hospital Laboratory. The report includes data from locally collected adult and pediatric specimens.

**September 9-15, 2019**

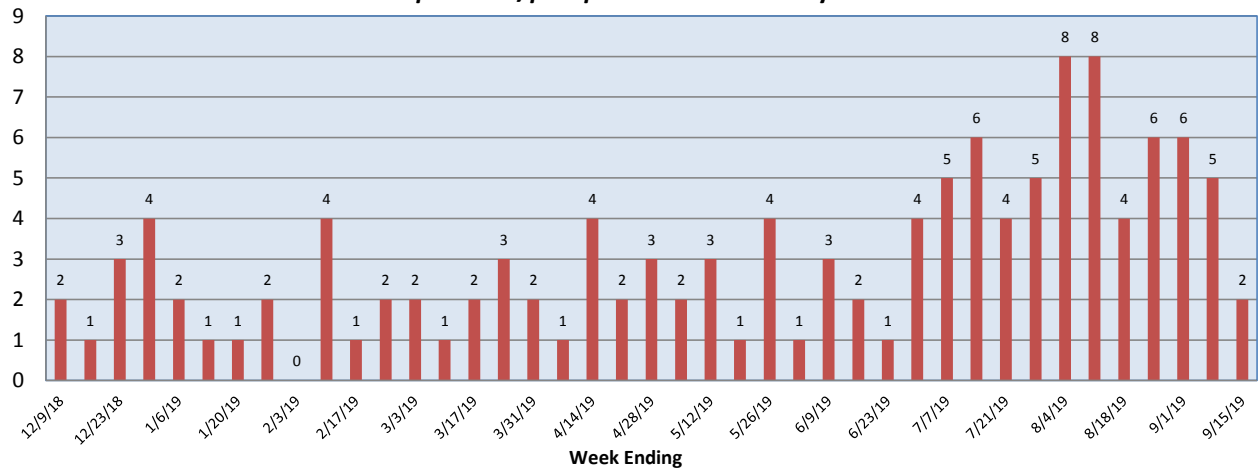
Pathogen	Positive Tests Current Week	Total Tests Current Week	Positive Tests YTD*
RSV	0	139	791
Influenza A	0		581
Influenza B	0		29
Parainfluenza	3	106	324
Adenovirus	3		335
Human Rhinovirus/Enterovirus	34		1313
Human Metapneumovirus	1		249
Coronavirus	1		200
Mycoplasma pneumoniae	6		82
Chlamydia pneumoniae	0		2
B. pertussis/parapertussis	2	52	132
Enterovirus, CSF	1	8	30

\*From October 8, 2018

### Respiratory Pathogens by Week

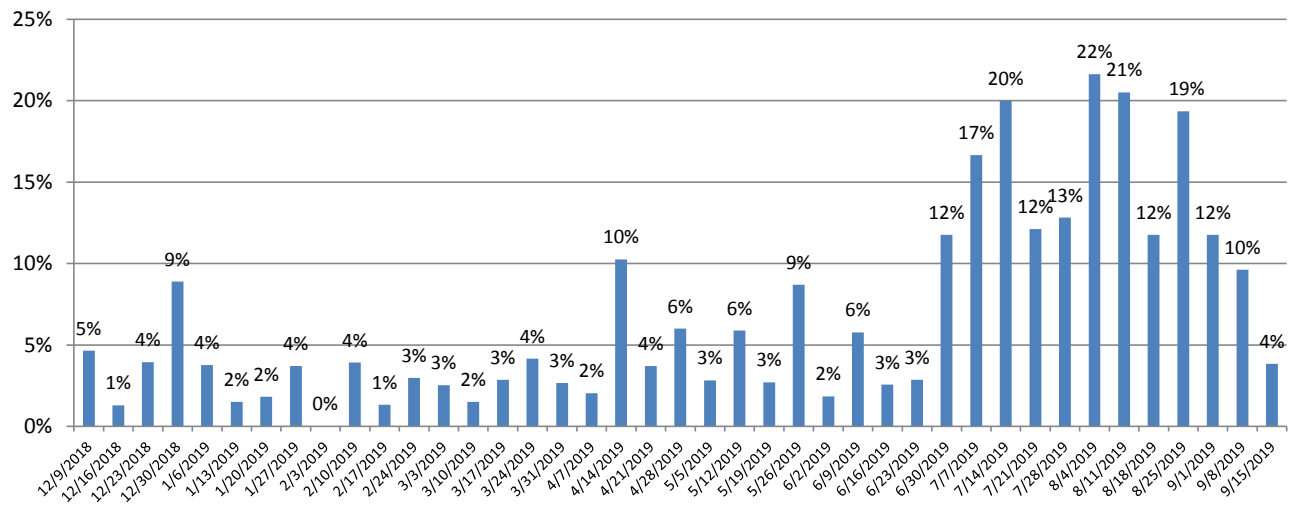


### B. pertussis/parapertussis Positives by Week

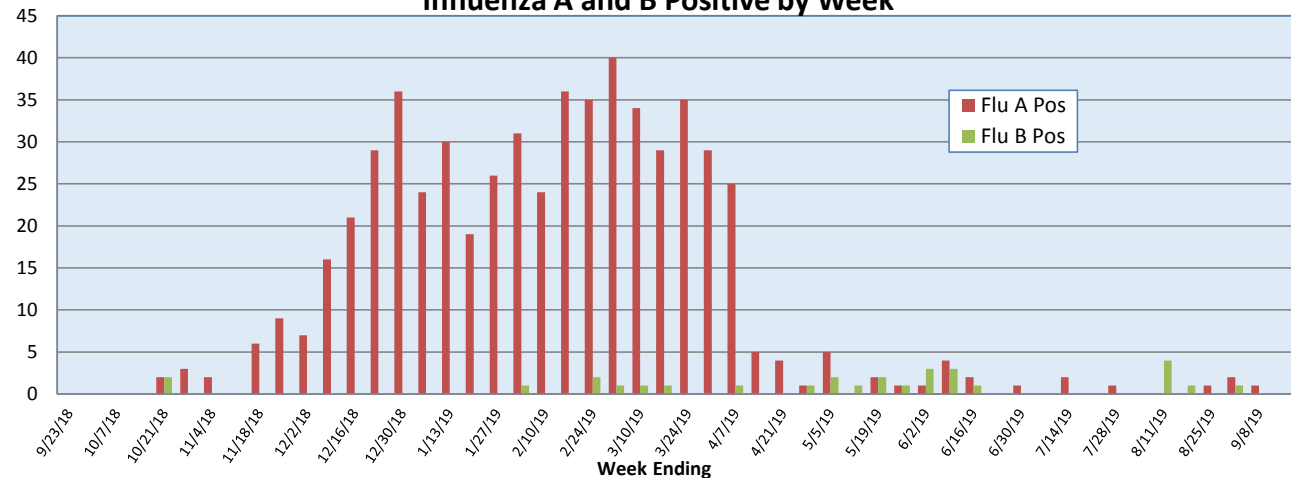


**Rady Children's Hospital Laboratory  
Pathogens Report**

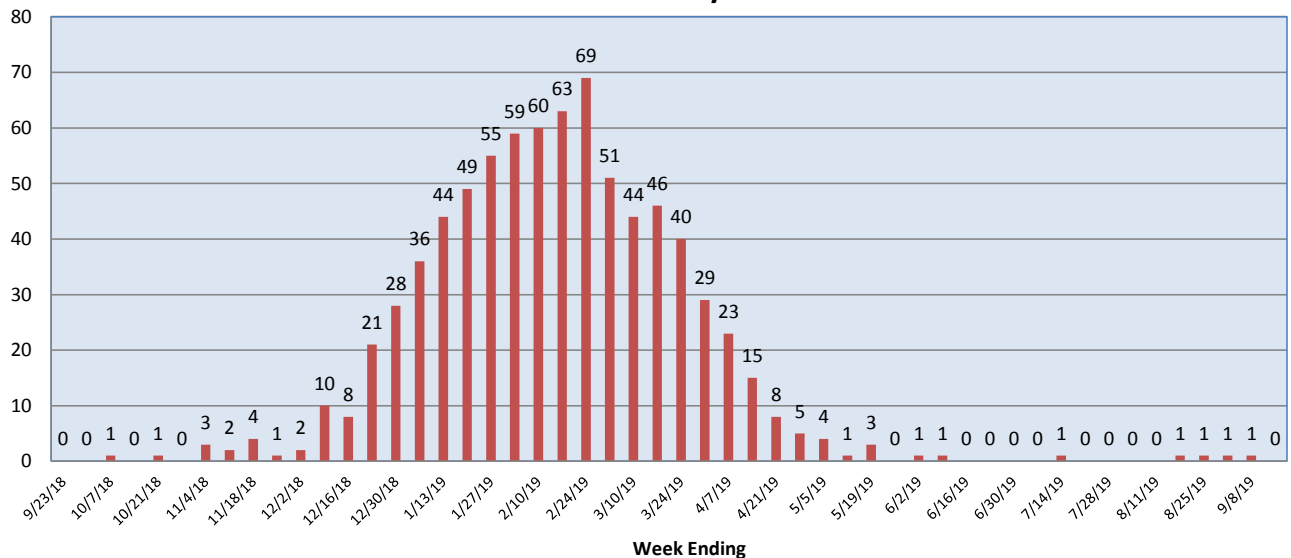
***B.pertussis* / *B.parapertussis* % Positive by Week**



**Influenza A and B Positive by Week**



**RSV Positive by Week**



Rady Children's Hospital Laboratory  
Pathogens Report

