



# INFLUENZA WATCH

Week 9  
Ending 3/2/19

The purpose of the weekly *Influenza Watch* is to summarize current influenza surveillance in San Diego County. **Please note that reported weekly data are preliminary and may change due to delayed submissions and additional laboratory results.**

**Contents**

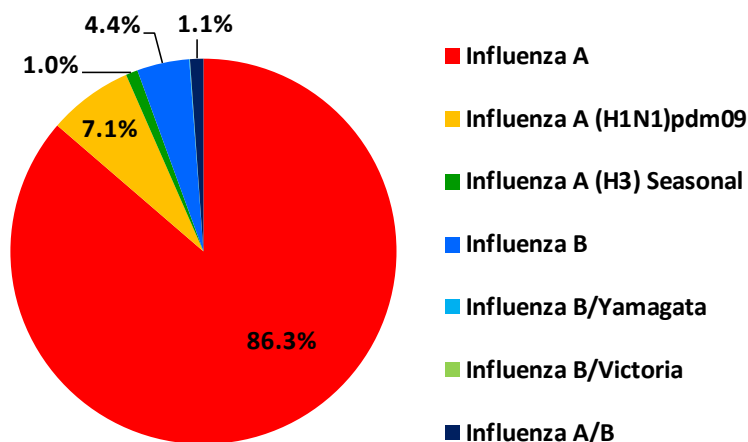
Page 1: Current Season Summary  
Page 2: Communiqué  
Page 3: Activity Level Indicator  
Pages 4-9: Trend Graphs  
Page 9: Reporting Information

Current  
Week**Current Week 9 (ending 3/2/2019)**

- 616 new influenza detections reported: *Elevated level*
- 6% influenza-like-illness (ILI) among emergency department visits: *Expected level*
- 3 new influenza-related deaths reported this week
- 6% of deaths registered with pneumonia and/or influenza: *Expected level*

Current  
Season Summary**6,094**

Total Cases

**45**Deaths<sup>†</sup>**16**Outbreaks<sup>\*</sup>**Virus Characteristics**

<sup>†</sup> Flu deaths less than 18 years of age are reportable to CDPH.

<sup>\*</sup> At least one case of laboratory-confirmed influenza in a setting experiencing two or more cases of influenza like illness (ILI) within a 72-hour period.

**Table 1. Influenza Surveillance Indicators.**

Indicator	2018-19 Season			2017-18 Season		Prior 3-Year Average**	
	Week 9	Week 8	Total To Date	Week 9	Total To Date	Week 9	Total To Date
All influenza detections reported (rapid or PCR)	616	538	6,094	740	18,137	645	9,026
Percent of emergency department visits for ILI	6%	6%		6%		5%	
Percent of deaths registered with pneumonia and/or influenza	6%	9%		8%		9%	
Number of influenza-related deaths reported <sup>^</sup>	3	7	45	7	288	7	125

Influenza season is July 1 - June 30, Weeks 27-26. Total deaths reported in prior seasons: 342 in 2017-18, 87 in 2016-17, and 68 in 2015-16.

\* Previous weeks case counts or percentages may change due to delayed processing or reporting.

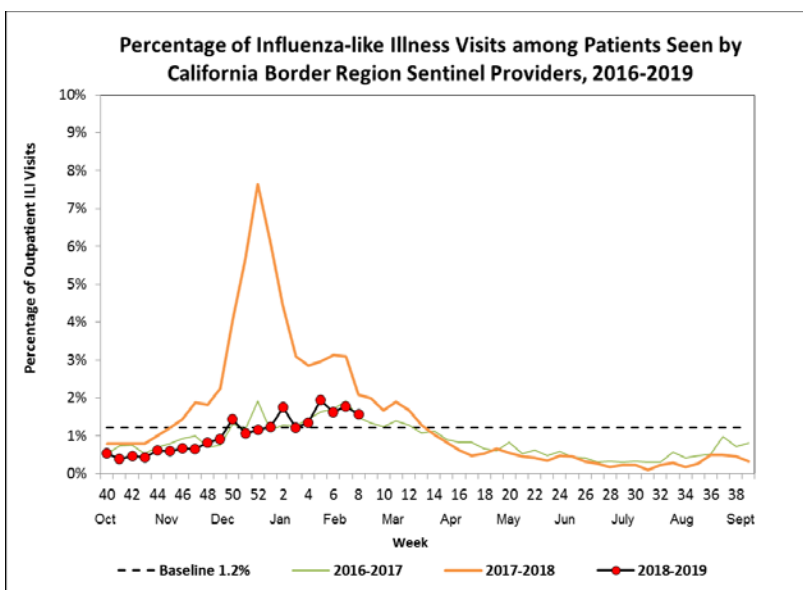
\*\* Includes FYs 2015-16, 2016-17, and 2017-18.

<sup>^</sup> Current FY deaths are shown by week of report; by week of death for prior FYs.

**Border Region Influenza Surveillance**

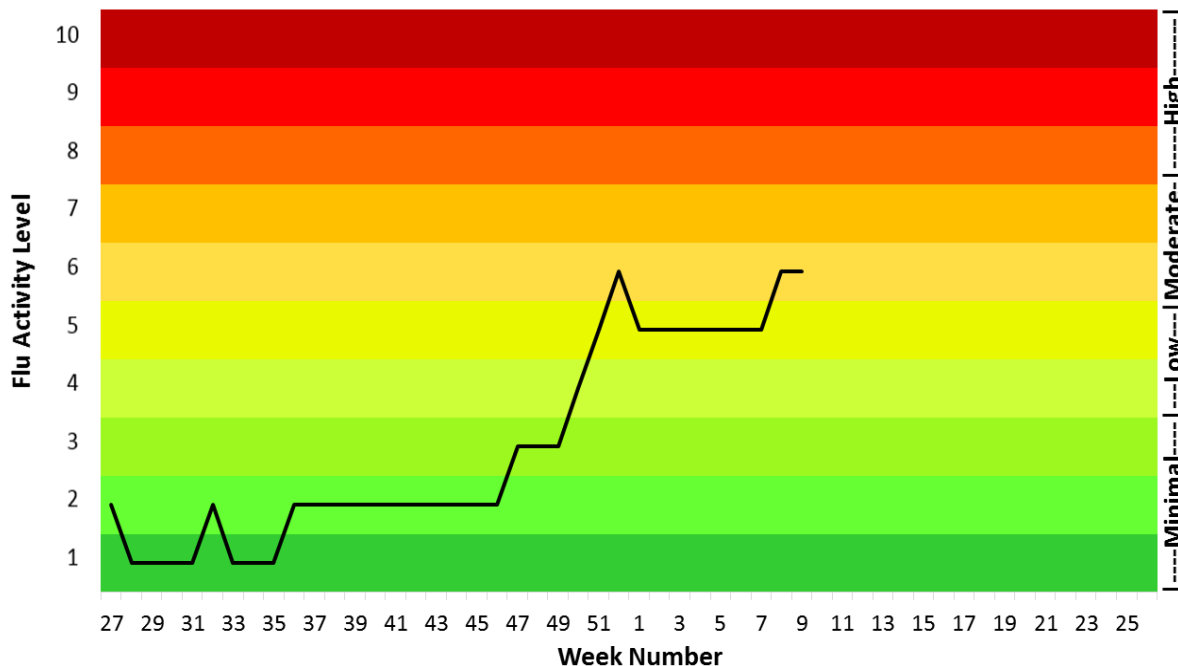
The California Department of Public Health (CDPH) [Office of Binational Border Health](#) monitors virologic and syndromic surveillance data for influenza from sentinel outpatient sites in the southern border region of California. Located in San Diego and Imperial Counties, and some parts of Riverside County, these sentinel sites report weekly the total number of patients screened for influenza-like-illness (ILI) and what proportion of those met the case definition for ILI. Respiratory specimens are also collected for further laboratory testing. Laboratories conducting testing of samples from sentinel sites include the following: [Naval Health Research Laboratory](#) (NHRC), [San Diego County Public Health Laboratory](#), and [CDPH Viral and Rickettsial Disease Laboratory](#) (VRDL).

Results of syndromic ILI activity and laboratory testing are summarized and incorporated into the CDPH [Influenza and Other Respiratory Viruses Weekly Report](#). For the week ending February 23, 2019 (most recent available), outpatient ILI activity was 1.6%, which is elevated above the 1.2% baseline for these sites. ILI activity for the California border region during recent weeks has been similar compared to activity for the same week during the 2016–2017 season and lower compared to the 2017–2018 season (see figure to right). More details are available in the most recent CDPH report [here](#).

**Table 2. Influenza Detections Reported, FY 2018-19\***

Positive Test Type/Subtype	Count	Percent
Influenza A	5,261	86.3%
Influenza A (H1N1)pdm09	433	7.1%
Influenza A (H3) Seasonal	61	1.0%
Influenza B	267	4.4%
Influenza B/Yamagata	3	0.0%
Influenza B/Victoria	1	0.0%
Influenza A/B	68	1.1%
<b>Total</b>	<b>6,094</b>	<b>100%</b>

\* Season is July 1 - June 30

**Figure 1. Influenza Activity Level for Emergency Department ILI.**

Legend	Minimal			Low		Moderate		High		
	LEVEL 1	LEVEL 2	LEVEL 3	LEVEL 4	LEVEL 5	LEVEL 6	LEVEL 7	LEVEL 8	LEVEL 9	LEVEL 10
	< mean	≥ mean and <1 standard deviation above mean	≥1 and <2 standard deviations above mean	≥2 and <3 standard deviations above mean	≥3 and <4 standard deviations above mean	≥4 and <5 standard deviations above mean	≥5 and <6 standard deviations above mean	≥6 and <7 standard deviations above mean	≥7 and <8 standard deviations above mean	≥8 standard deviations above mean

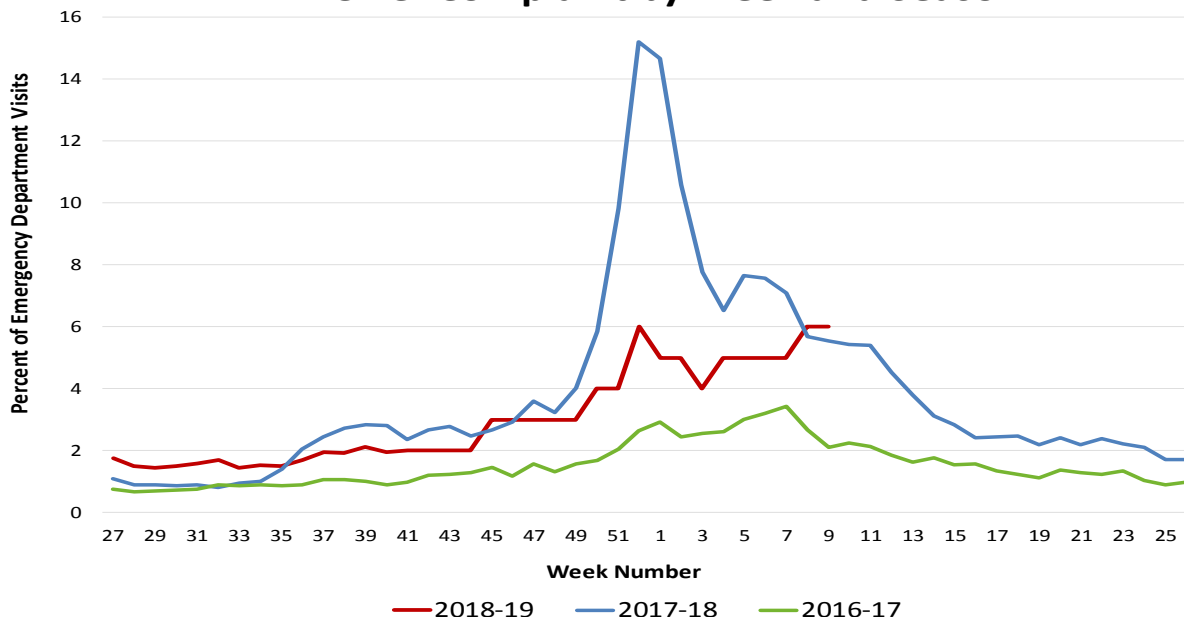
**Influenza Activity Indicator:**

The activity levels show how the current week's ED ILI% (emergency department influenza-like-illness, percent of all visits) compares to the mean, and number of standard deviations above of the mean, of the non-influenza season weeks (CDC disease weeks 27-39) observed from the prior five seasons.

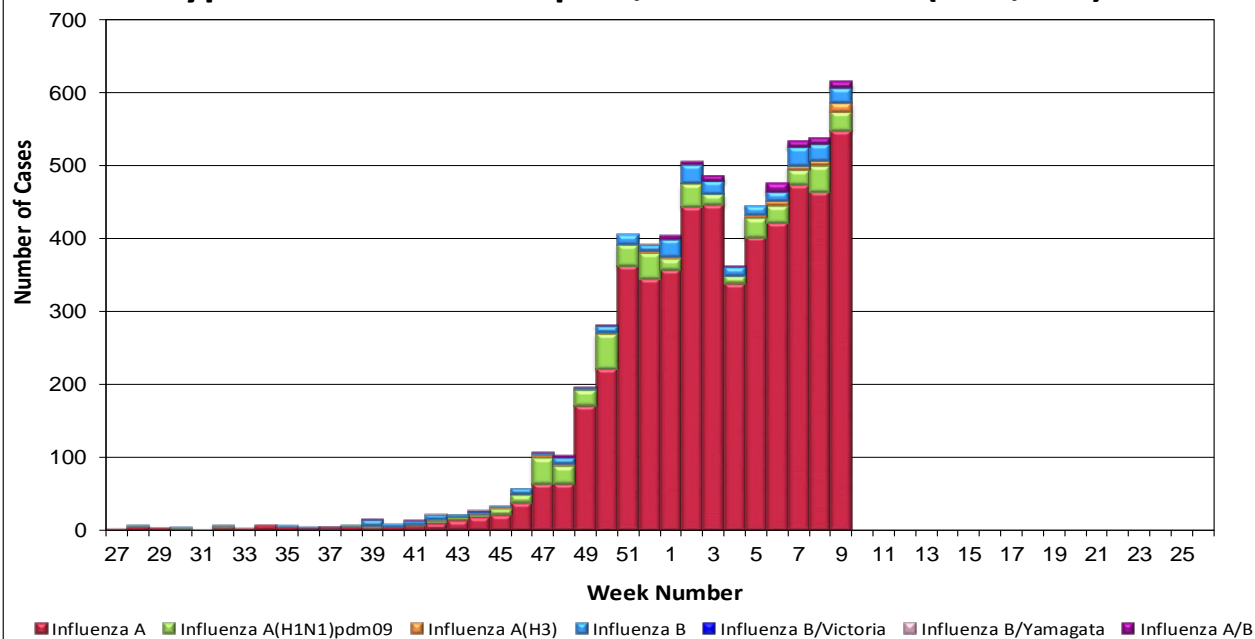
There are 10 activity levels, classified as: Minimal (levels 1-3), Low (levels 4-5), Moderate (levels 6-7), and High (levels 8-10). An activity level of 1 corresponds to when the ED ILI% is below the mean; level 2 corresponds to when the ED ILI% is less than 1 standard deviation above the mean; level 3 corresponds to when the ED ILI% is more than 1 but less than 2 standard deviations above the mean, and so on, with an activity level of 10 corresponding to when the ED ILI% is at 8 or more standard deviations above the mean.

# INFLUENZA WATCH

**Figure 2. Percent of Emergency Department Visits for ILI Chief Complaint by Week and Season.**

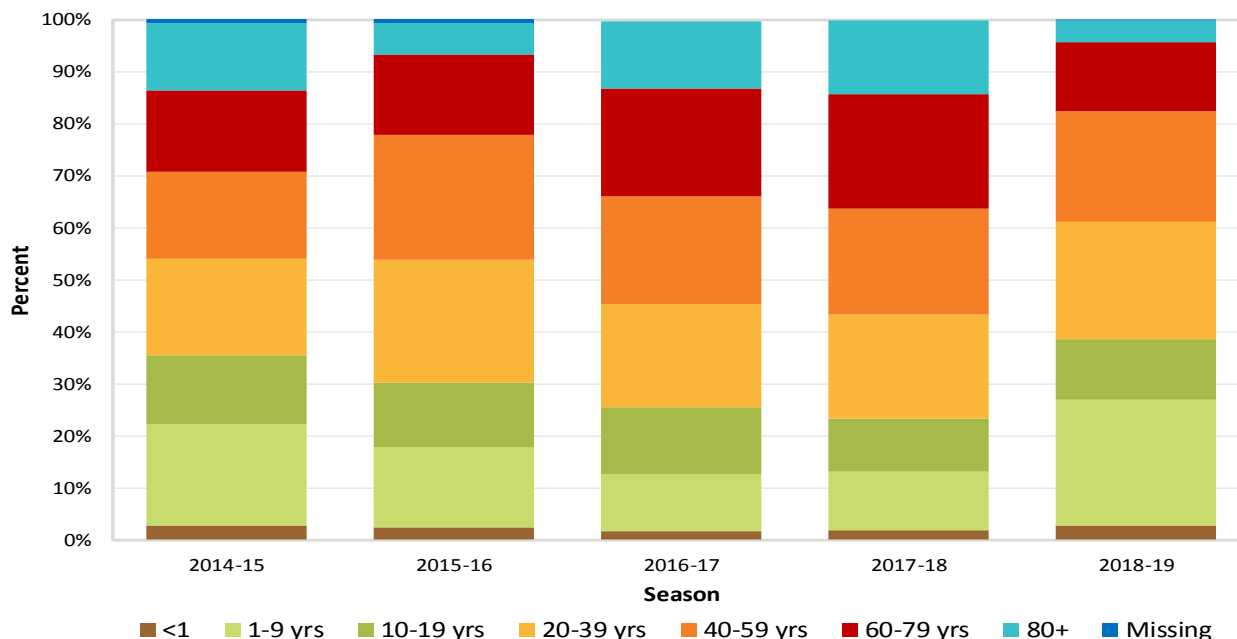


**Figure 3. San Diego County Influenza Detections by Type and Week of Report, 2018-19 FYTD (N=6,094).**

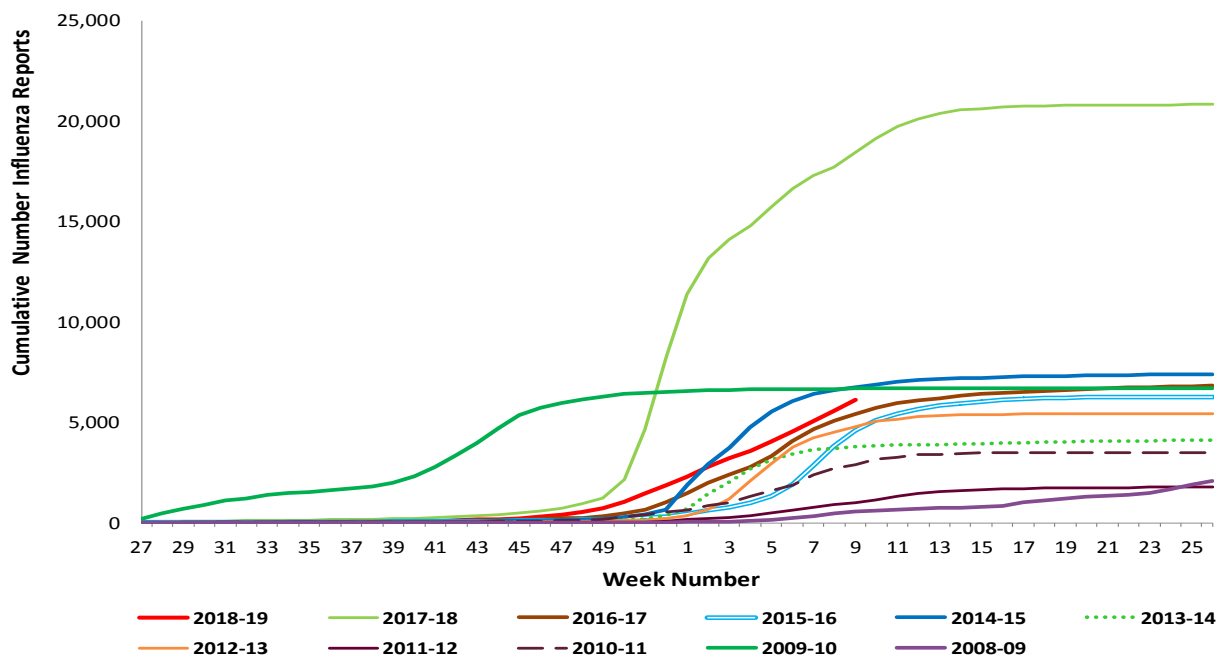


# INFLUENZA WATCH

**Figure 4. Proportion of Influenza Detections by Age and Season, 2014-15 to 2018-19.**

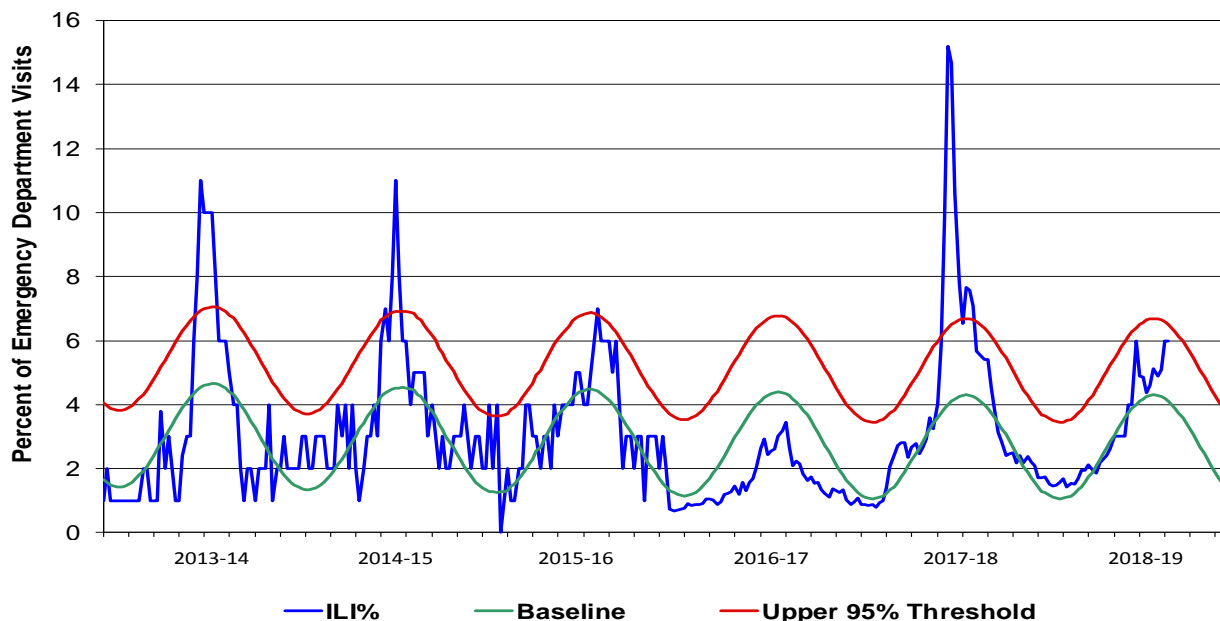


**Figure 5. Cumulative Influenza Case Reports by Episode Week & Season.**

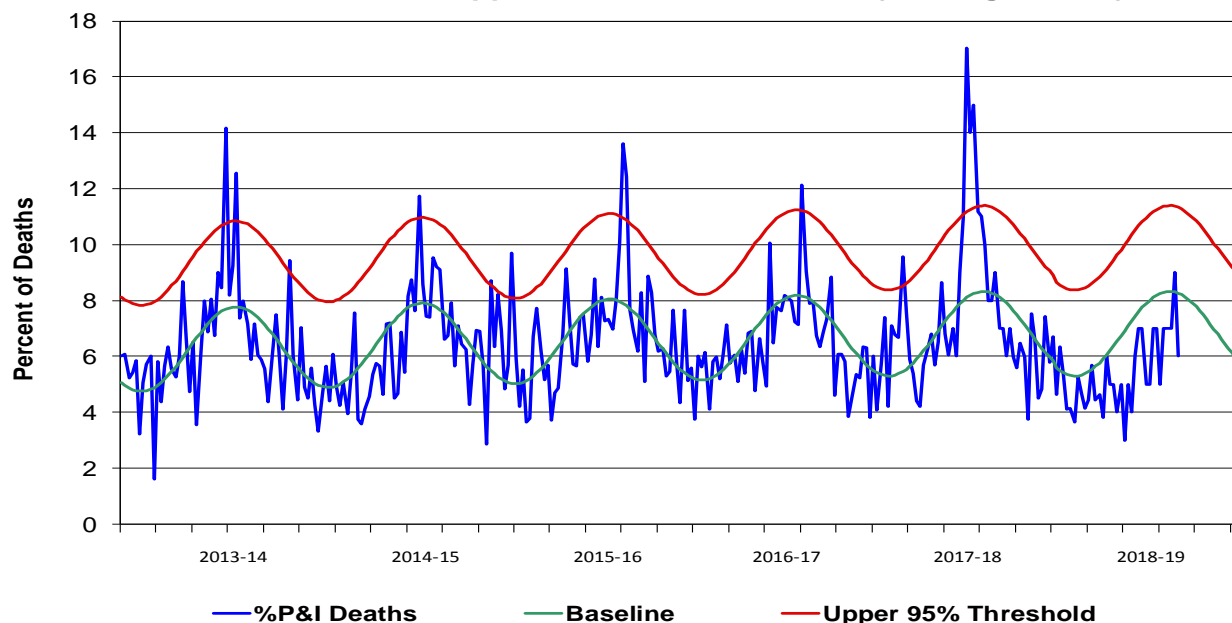


# INFLUENZA WATCH

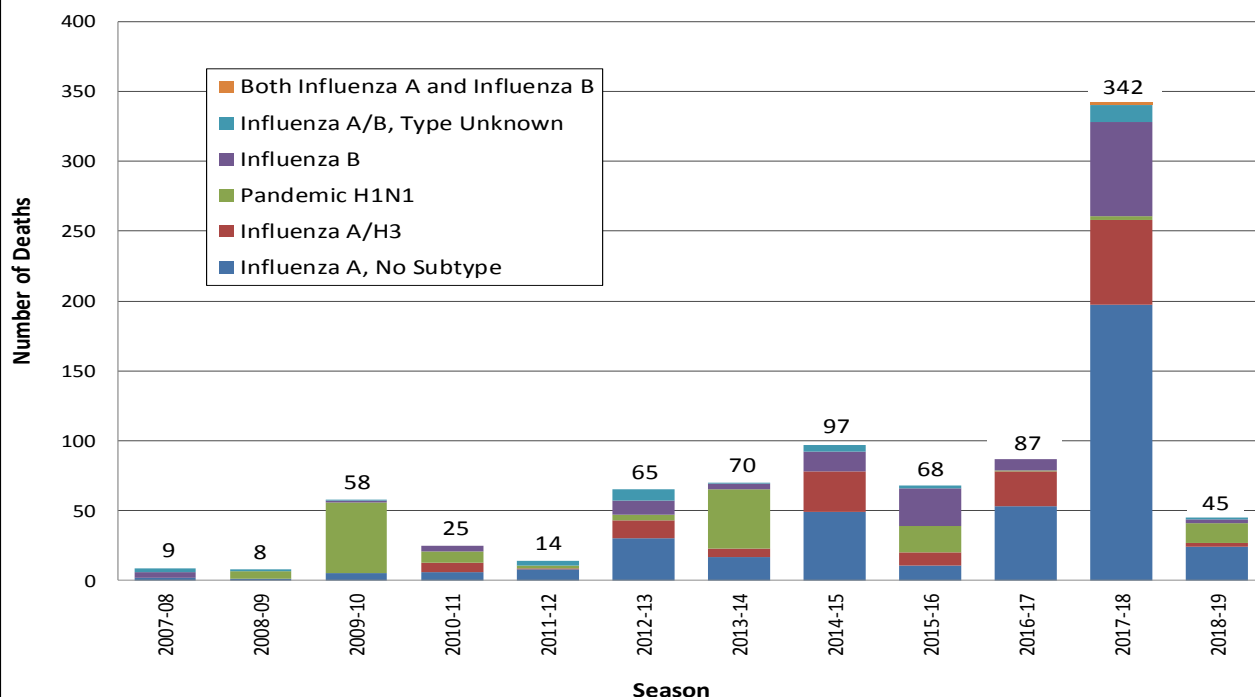
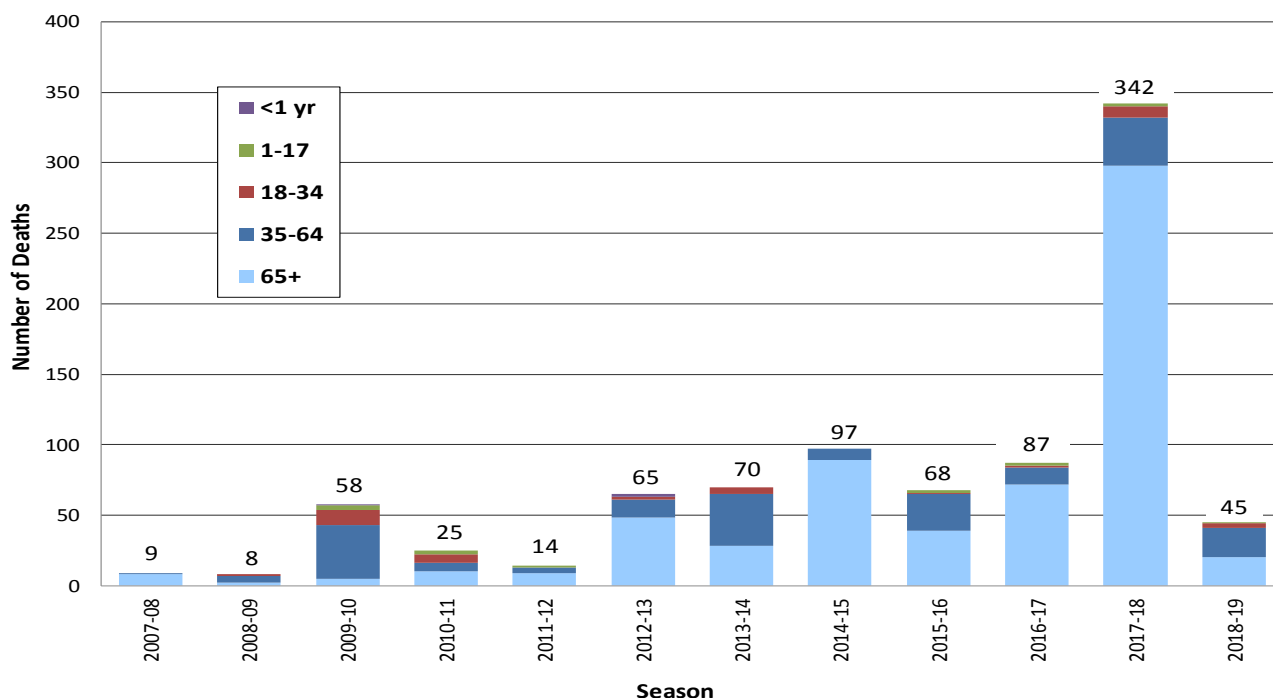
**Figure 6. Percent of San Diego County Emergency Department Visits for Influenza-like Illness by Week and Season Compared to 5-Year Baseline & Upper 95% Threshold Values (Serfling Method).**

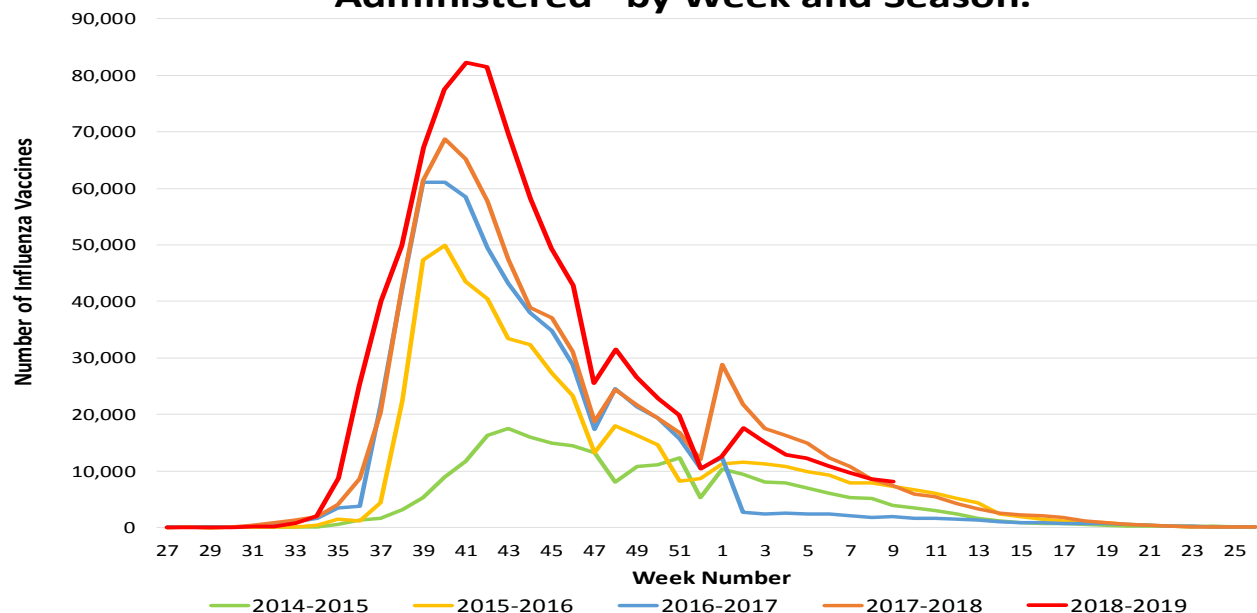
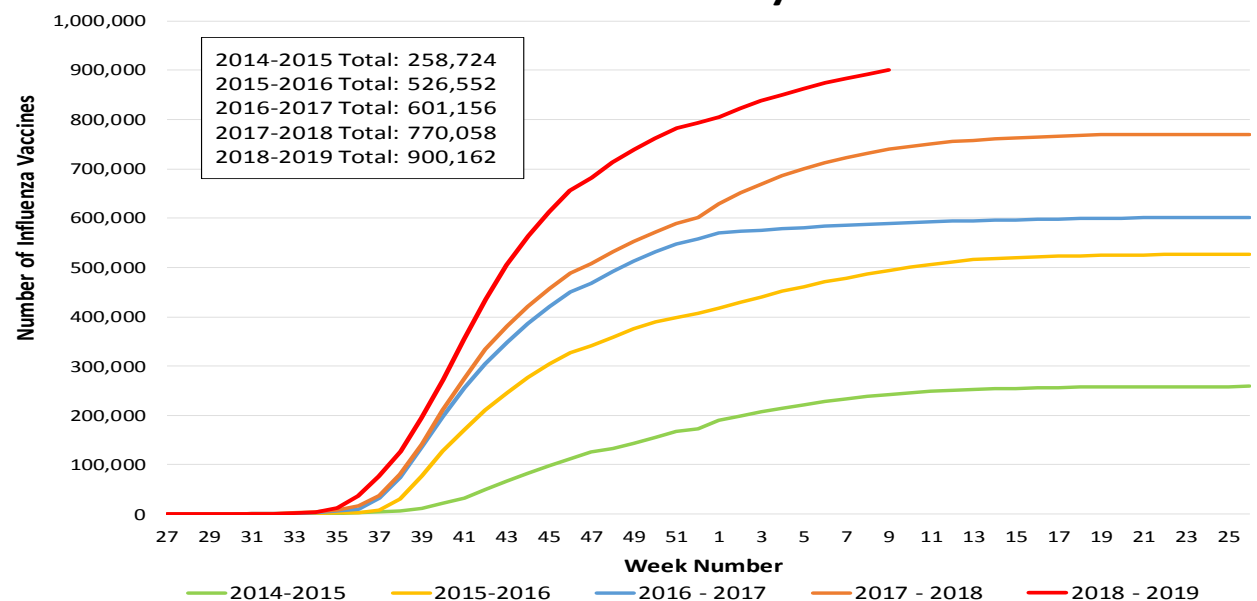


**Figure 7. Percent of San Diego County Deaths Registered with Pneumonia and/or Influenza by Week and Season Compared to Prior 5-Year Baseline & Upper 95% Threshold Values (Serfling Method).**



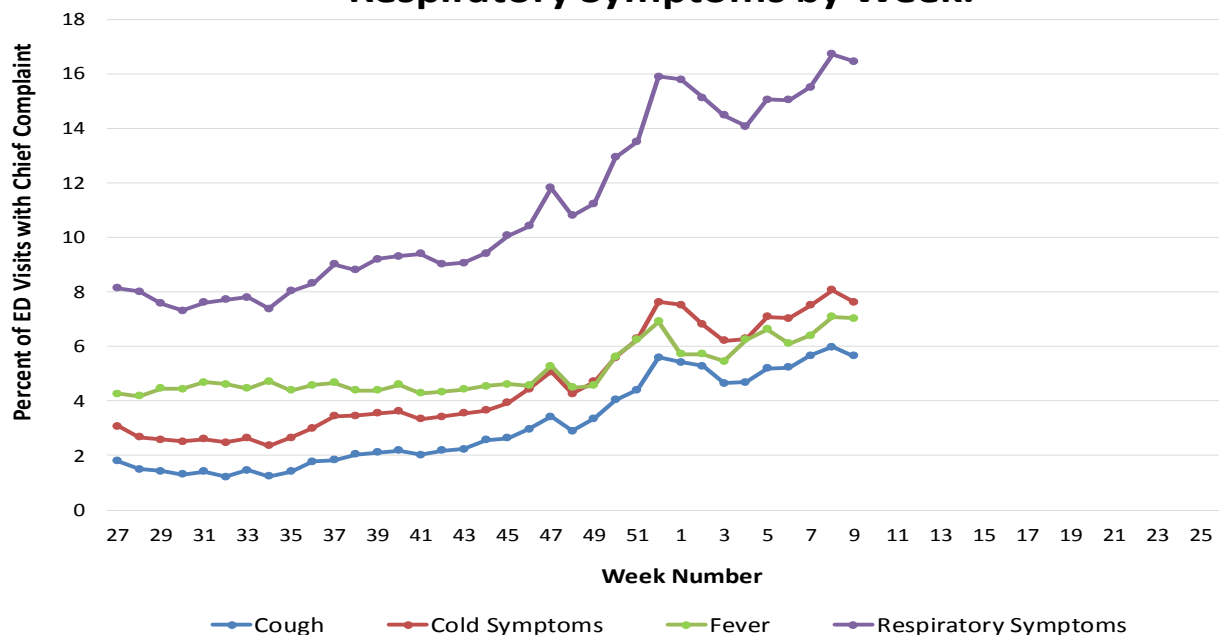
# INFLUENZA WATCH

**Figure 8. Influenza Deaths by Type and Season.**

**Figure 9. Influenza Deaths by Age and Season.**


**Figure 10. Number of Influenza Vaccinations Administered\* by Week and Season.****Figure 11. Cumulative Number of Influenza Vaccinations Administered\* by Week and Season.**

\* Influenza vaccinations administered and entered into the San Diego Immunization Registry ([SDIR](#))



**Figure 12. Percent of Emergency Department Visit Chief Complaints for Cough, Cold, Fever, or Respiratory Symptoms by Week.**

### Influenza Reporting in San Diego County

Local providers are encouraged to report laboratory-positive influenza detections to the County Epidemiology Program by **FAX (858) 715-6458**. Please fax a [Confidential Morbidity Report Form](#), or an [Influenza Case Report Form](#), and/or a printed laboratory result. If known, please indicate if the patient was admitted to ICU and/or died, and/or is a resident of a congregate living facility.

Regarding sending influenza specimens to [Public Health Laboratory](#) (PHL) for confirmation, please use the updated PHL [Test Request Form](#) and contact PHL at **(619) 692-8500** with any questions. Contact the Epidemiology Program by telephone **(619) 692-8499** or email to [EpiDiv.HHSA@sdcounty.ca.gov](mailto:EpiDiv.HHSA@sdcounty.ca.gov) with questions regarding influenza data.

#### Resources

County of San Diego Epidemiology Program website [www.sdepi.org](http://www.sdepi.org)  
 County of San Diego [2017-18 Influenza Season Summary](#)  
 Current Week Influenza Watch [Slide Deck](#) – A slide presentation version of this report  
 County of San Diego Immunization Program (SDIZ) [www.sdiz.org](http://www.sdiz.org)

California Department of Public Health (CDPH) [Influenza Update](#)  
 Centers for Disease Control and Prevention (CDC) [Influenza Surveillance](#)