

Rady Children's Hospital Laboratory Pathogens Report

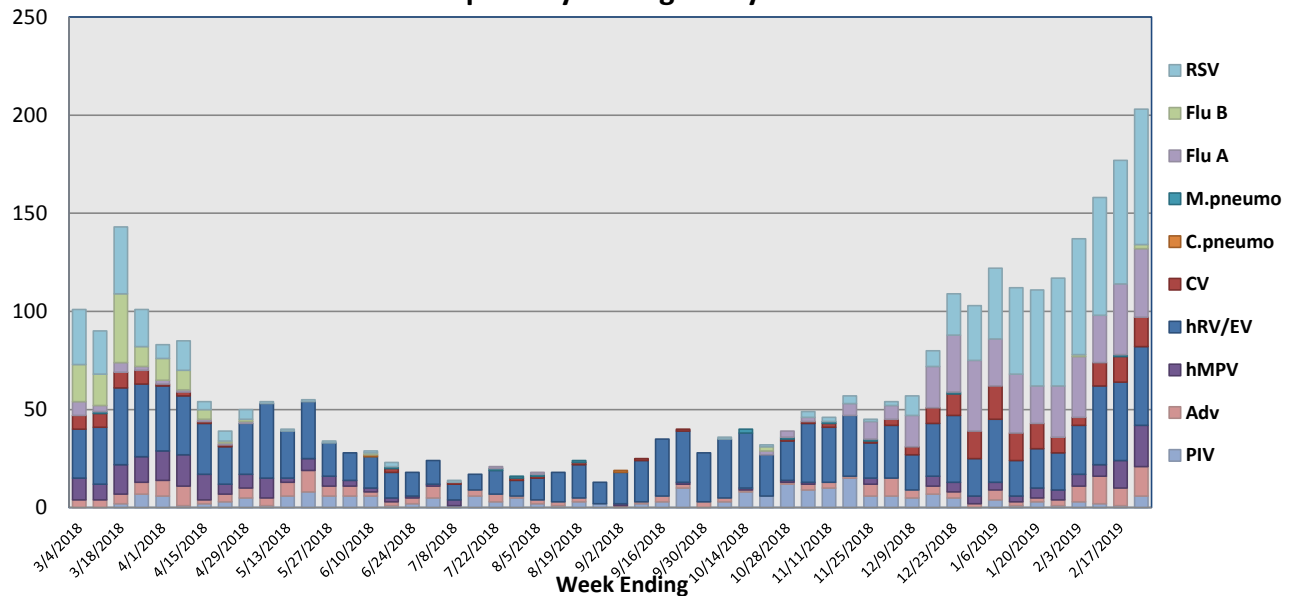
This report is a listing of selected pathogens detected at Rady Children's Hospital Laboratory. The report includes data from locally collected adult and pediatric specimens.

February 18-24, 2019

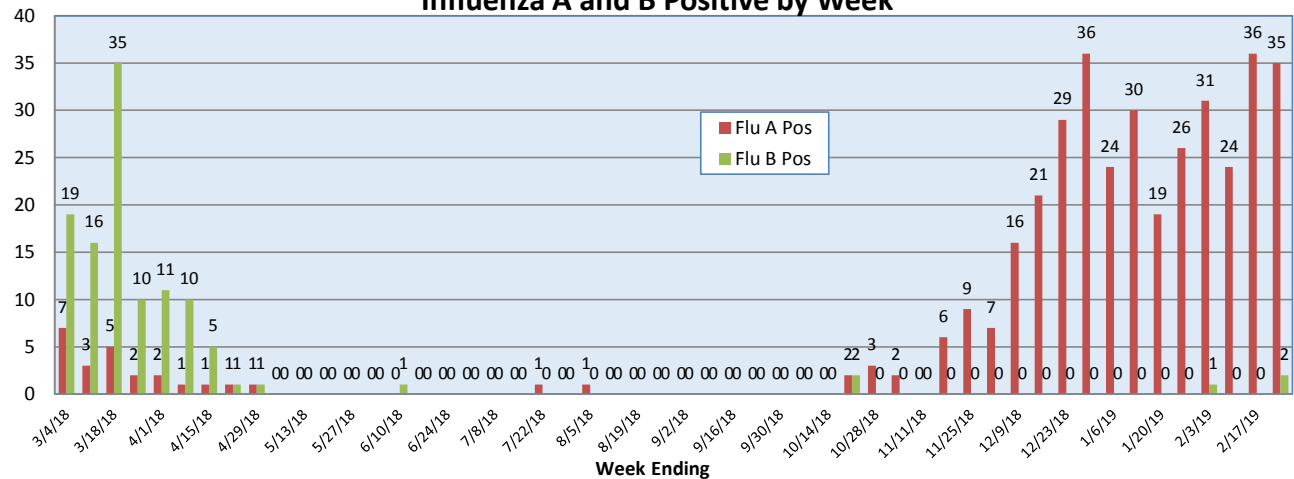
Pathogen	Positive Tests Current Week	Total Tests Current Week	Positive Tests YTD*
RSV	69	301	515
Influenza A	35		356
Influenza B	2		5
Parainfluenza	5	150	110
Adenovirus	15		95
Human Rhinovirus/Enterovirus	40		535
Human Metapneumovirus	21		84
Coronavirus	15		141
Mycoplasma pneumoniae	0		7
Chlamydia pneumoniae	0		0
B. pertussis/parapertussis	2	67	32
Enterovirus, CSF	0	5	12

*From October 8, 2018

Respiratory Pathogens by Week



Influenza A and B Positive by Week



**Rady Children's Hospital Laboratory
Pathogens Report**

