



INFLUENZA WATCH

Week 4
Ending 1/26/19

The purpose of the weekly *Influenza Watch* is to summarize current influenza surveillance in San Diego County. **Please note that reported weekly data are preliminary and may change due to delayed submissions and additional laboratory results.**

Contents

Page 1: Current Season Summary
Page 2: Communiqué
Page 3: Activity Level Indicator
Pages 4-9: Trend Graphs
Page 9: Reporting Information

Current
Week**Current Week 4 (ending 1/26/2019)**

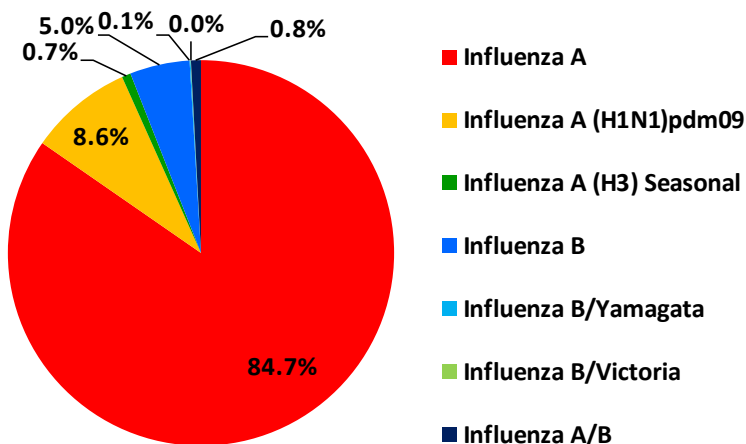
- 366 new influenza detections reported: *Elevated level*
- 5% influenza-like-illness (ILI) among emergency department visits: *Expected level*
- No new influenza-related deaths reported this week
- 5% of deaths registered with pneumonia and/or influenza: *Expected level*

Current
Season Summary**3,493**

Total Cases

24Deaths[†]**4**

Outbreaks*

Virus Characteristics

[†] Flu deaths less than 18 years of age are reportable to CDPH.

* At least one case of laboratory-confirmed influenza in a setting experiencing two or more cases of influenza like illness (ILI) within a 72-hour period.

Table 1. Influenza Surveillance Indicators.

Indicator	2018-19 Season			2017-18 Season		Prior 3-Year Average**	
	Week 4	Week 3	Total To Date	Week 4	Total To Date	Week 4	Total To Date
All influenza detections reported (rapid or PCR)	366	489	3,493	612	14,256	363	5,867
Percent of emergency department visits for ILI	5%	4%		7%		4%	
Percent of deaths registered with pneumonia and/or influenza	5%	7%		15%		10%	
Number of influenza-related deaths reported [^]	0	8	24	31	205	15	81

Influenza season is July 1 - June 30, Weeks 27-26. Total deaths reported in prior seasons: 342 in 2017-18, 87 in 2016-17, and 68 in 2015-16.

* Previous weeks case counts or percentages may change due to delayed processing or reporting.

** Includes FYs 2015-16, 2016-17, and 2017-18.

[^] Current FY deaths are shown by week of report; by week of death for prior FYs.



CDC COCA Call on Influenza on February 5th

On Tuesday February 5th at 11 PM (Pacific Time), the Centers for Disease Control and Prevention (CDC) will have a Clinician Outreach and Communication Activity (COCA) webinar entitled “2018-2019 Influenza Season and Recommendations for Clinicians.”

During this COCA call, clinicians will learn about 2018–2019 influenza activity and hear an overview of CDC’s recommendations for healthcare providers regarding influenza vaccination and the use of influenza antiviral medications for the 2018–2019 influenza season, including a new antiviral medication approved by the FDA in October 2018.

A few minutes before the webinar begins, please click this link to join the webinar:

<https://zoom.us/j/862187873>. Clinicians can also join by **telephone by calling either** (646) 876-9923 or (669) 900-8633 and use **webinar ID: 862 187 873**.

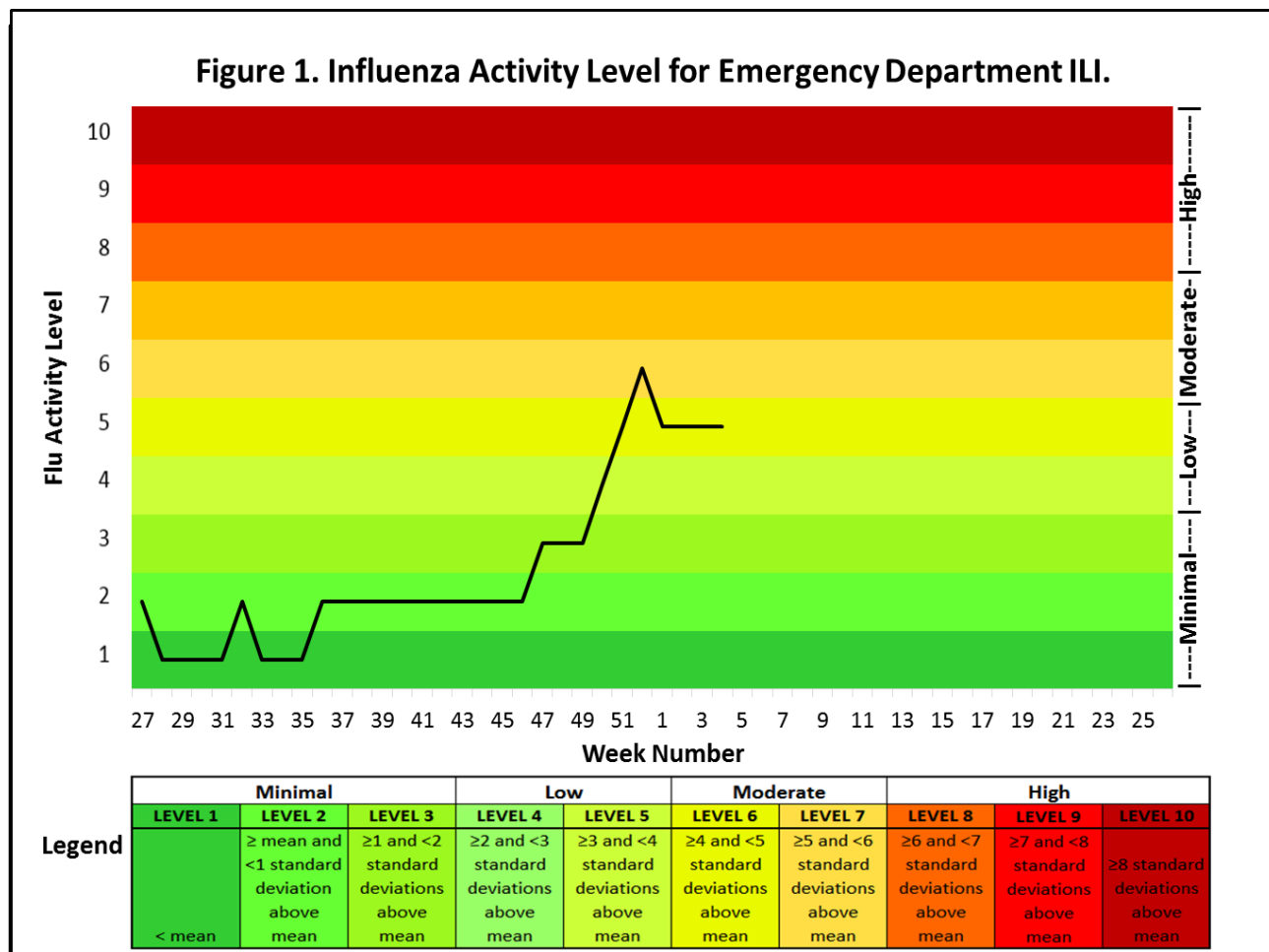
The recordings (audio, slides, and transcript) for this call will be posted on COCA [webpage](#) a week after the call. Free [continuing education \(CE\)](#) is available for this and most COCA Calls.

COCA prepares clinicians to respond to emerging health threats and public health emergencies by communicating relevant, timely information related to disease outbreaks, disasters, terrorism events, and other health alerts. More information about COCA is located [here](#), and clinicians can sign up for email updates about these educational activities [here](#).

Table 2. Influenza Detections Reported, FY 2018-19*

Positive Test Type/Subtype	Count	Percent
Influenza A	2,957	84.7%
Influenza A (H1N1)pdm09	302	8.6%
Influenza A (H3) Seasonal	26	0.7%
Influenza B	175	5.0%
Influenza B/Yamagata	3	0.1%
Influenza B/Victoria	1	0.0%
Influenza A/B	29	0.8%
Total	3,493	100%

* Season is July 1 - June 30

**Influenza Activity Indicator:**

The activity levels show how the current week's ED ILI% (emergency department influenza-like-illness, percent of all visits) compares to the mean, and number of standard deviations above of the mean, of the non-influenza season weeks (CDC disease weeks 27-39) observed from the prior five seasons.

There are 10 activity levels, classified as: Minimal (levels 1-3), Low (levels 4-5), Moderate (levels 6-7), and High (levels 8-10). An activity level of 1 corresponds to when the ED ILI% is below the mean; level 2 corresponds to when the ED ILI% is less than 1 standard deviation above the mean; level 3 corresponds to when the ED ILI% is more than 1 but less than 2 standard deviations above the mean, and so on, with an activity level of 10 corresponding to when the ED ILI% is at 8 or more standard deviations above the mean.

INFLUENZA WATCH

Figure 2. Percent of Emergency Department Visits for ILI Chief Complaint by Week and Season.

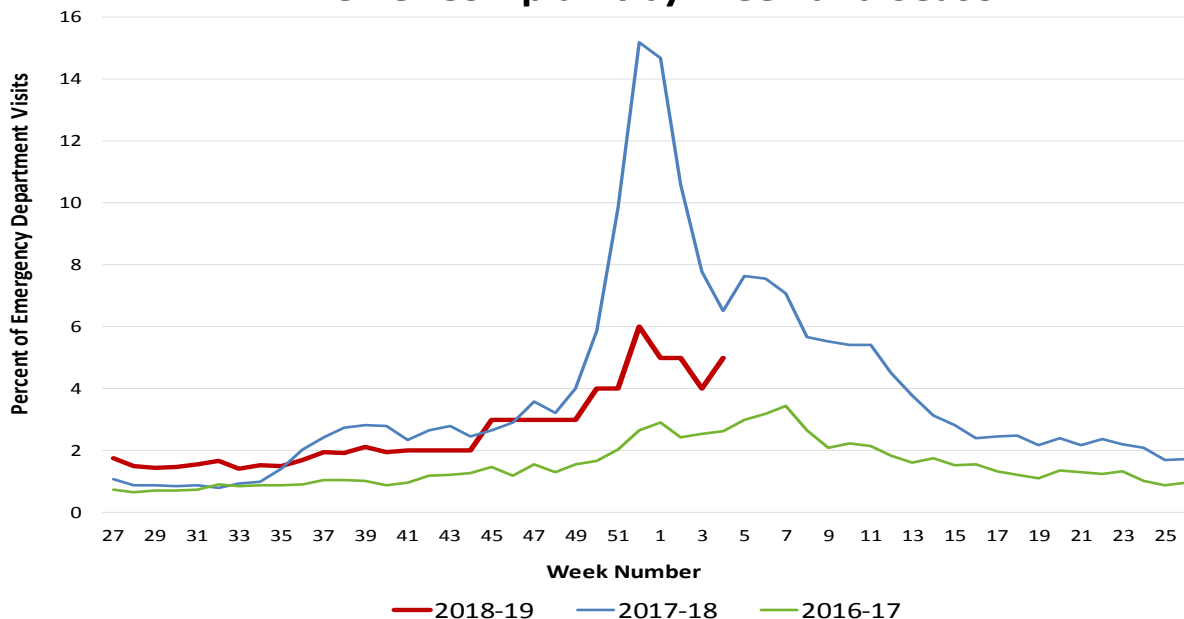
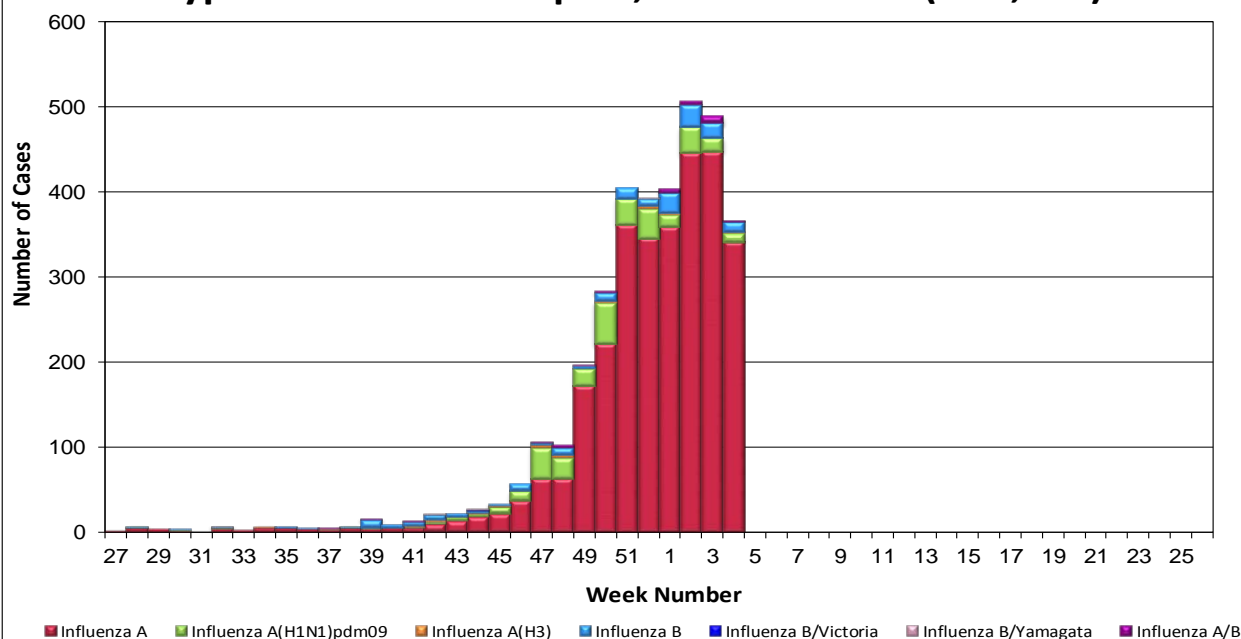


Figure 3. San Diego County Influenza Detections by Type and Week of Report, 2018-19 FYTD (N=3,493).



INFLUENZA WATCH

Week 4
Ending 1/26/19

Figure 4. Proportion of Influenza Detections by Age and Season, 2014-15 to 2018-19.

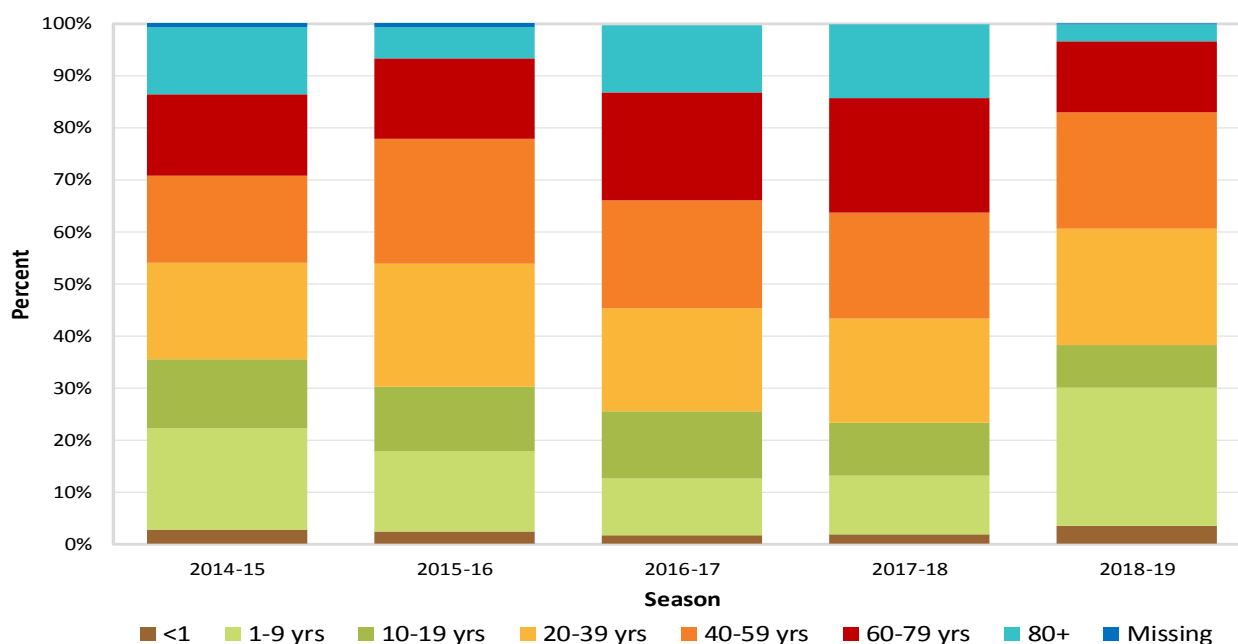
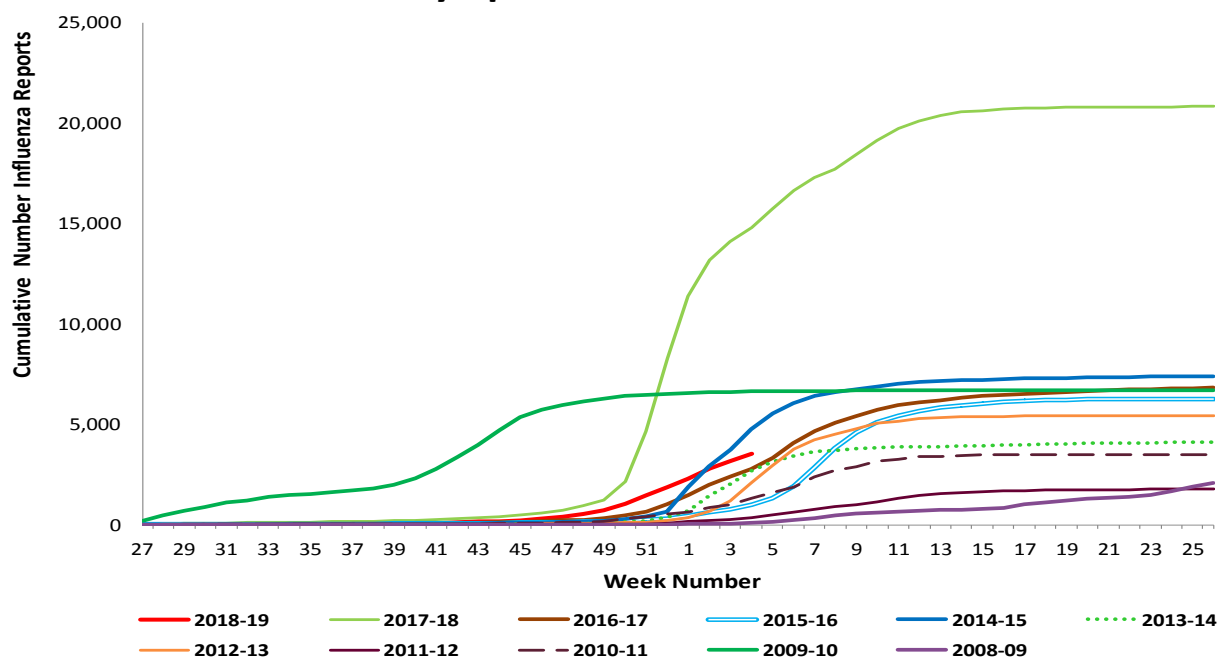


Figure 5. Cumulative Influenza Case Reports by Episode Week & Season.



INFLUENZA WATCH

Figure 6. Percent of San Diego County Emergency Department Visits for Influenza-like Illness by Week and Season Compared to 5-Year Baseline & Upper 95% Threshold Values (Serfling Method).

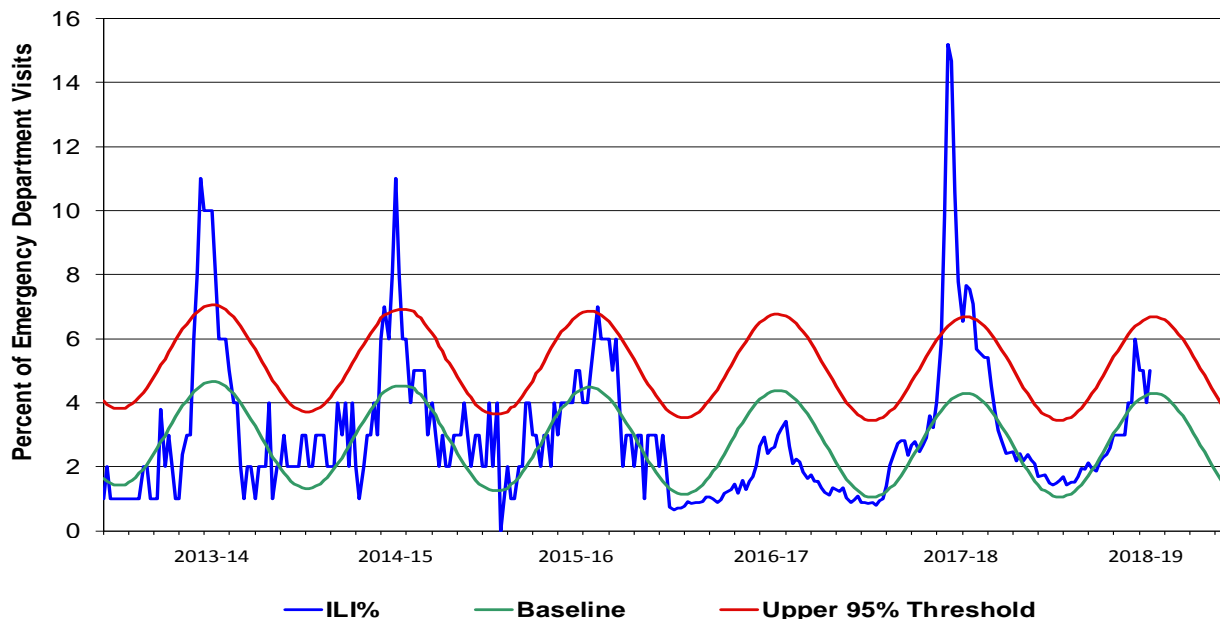
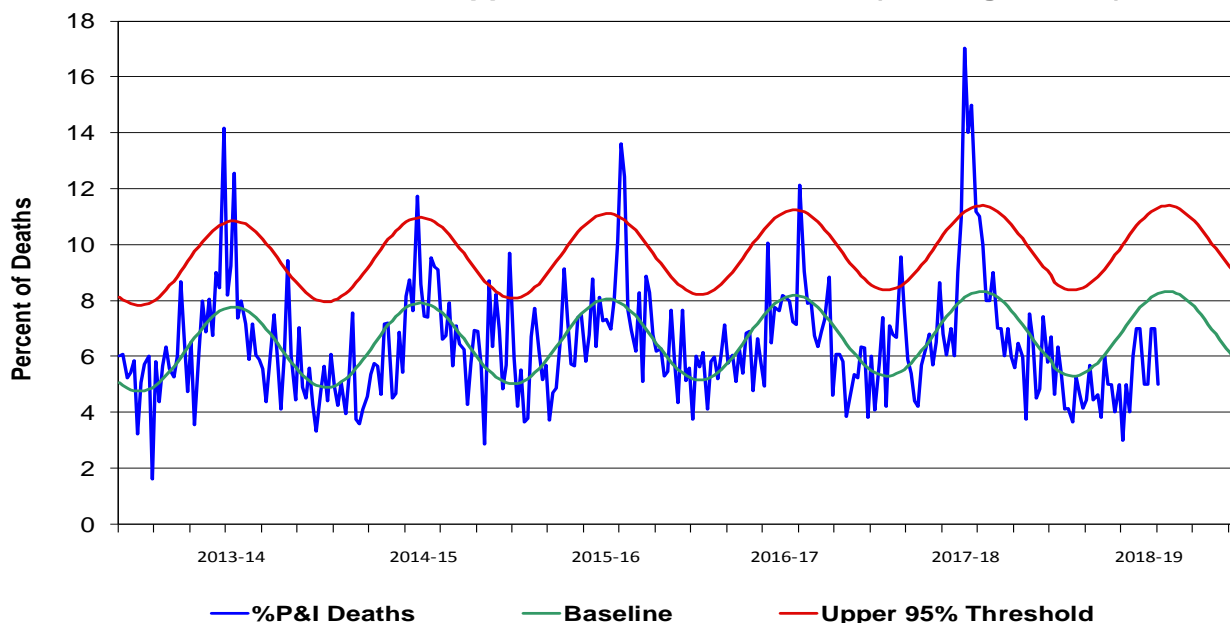


Figure 7. Percent of San Diego County Deaths Registered with Pneumonia and/or Influenza by Week and Season Compared to Prior 5-Year Baseline & Upper 95% Threshold Values (Serfling Method).



INFLUENZA WATCH

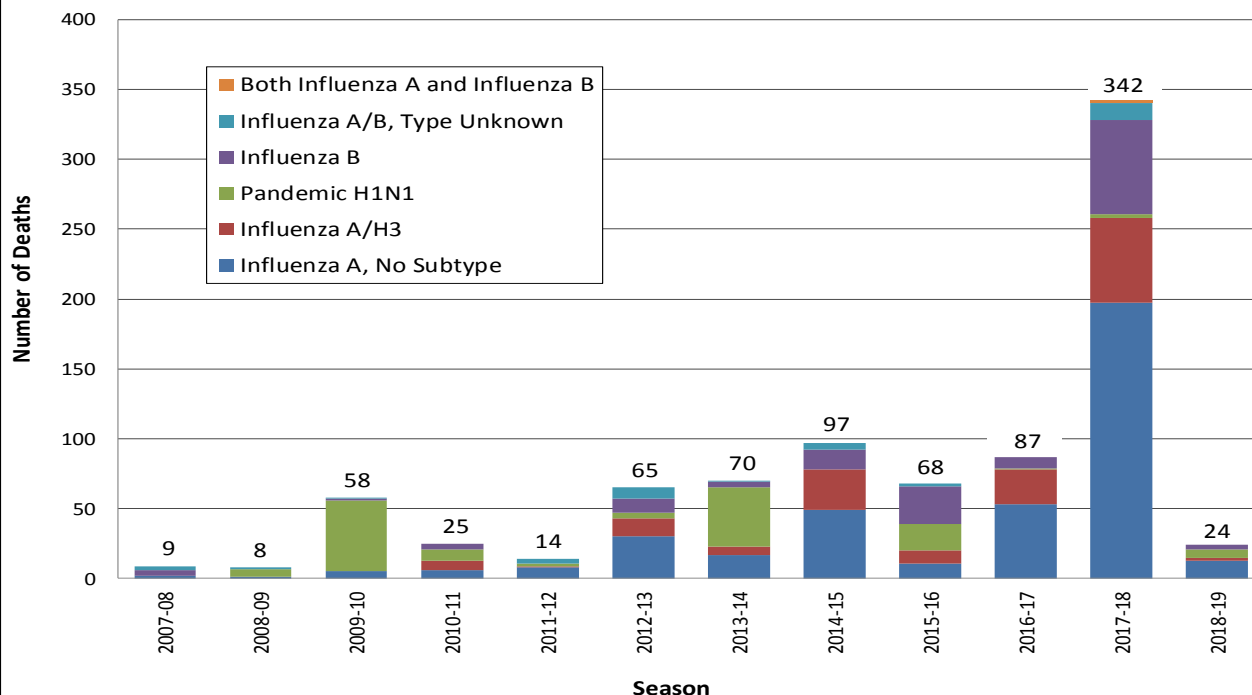
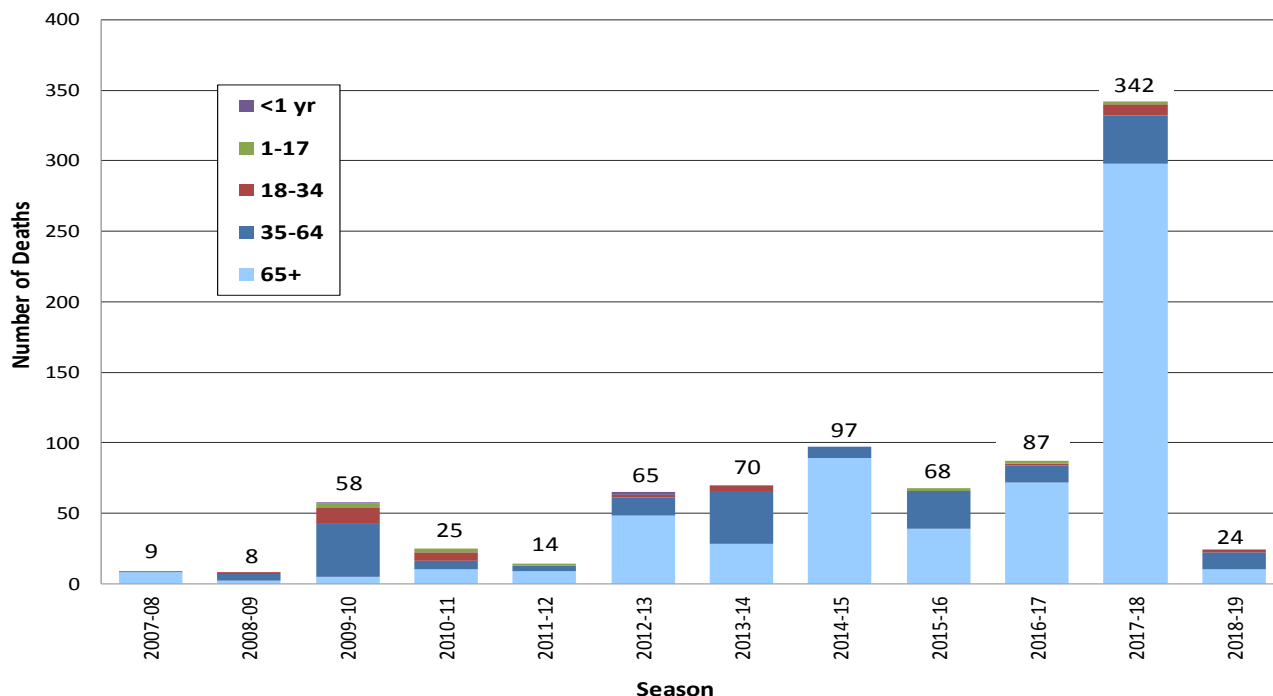
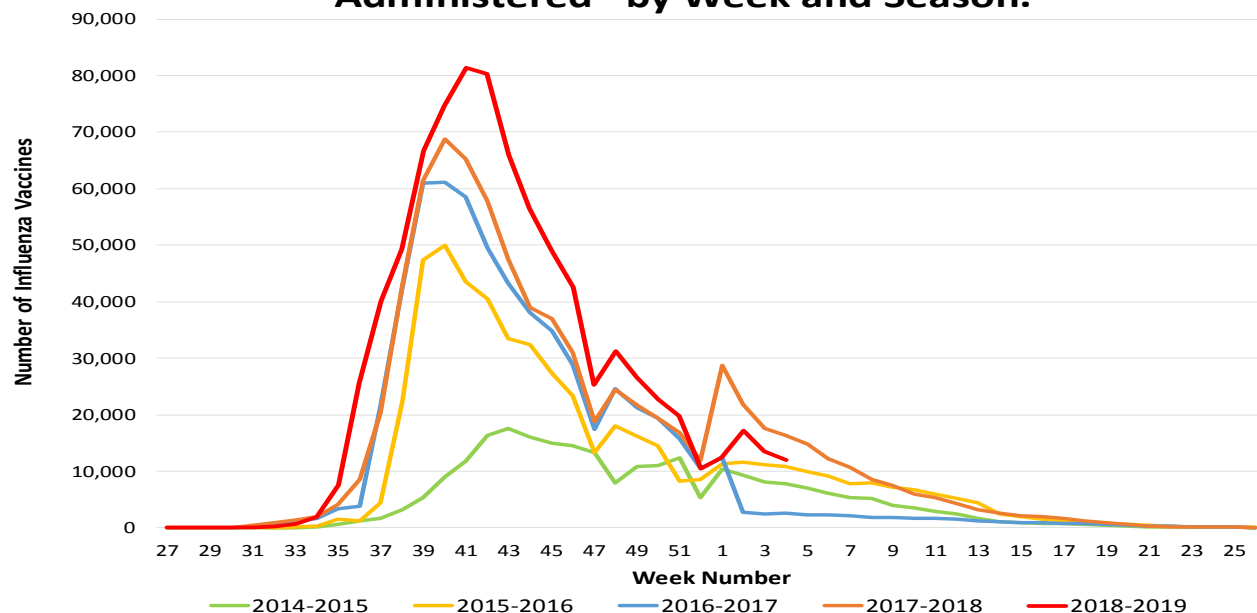
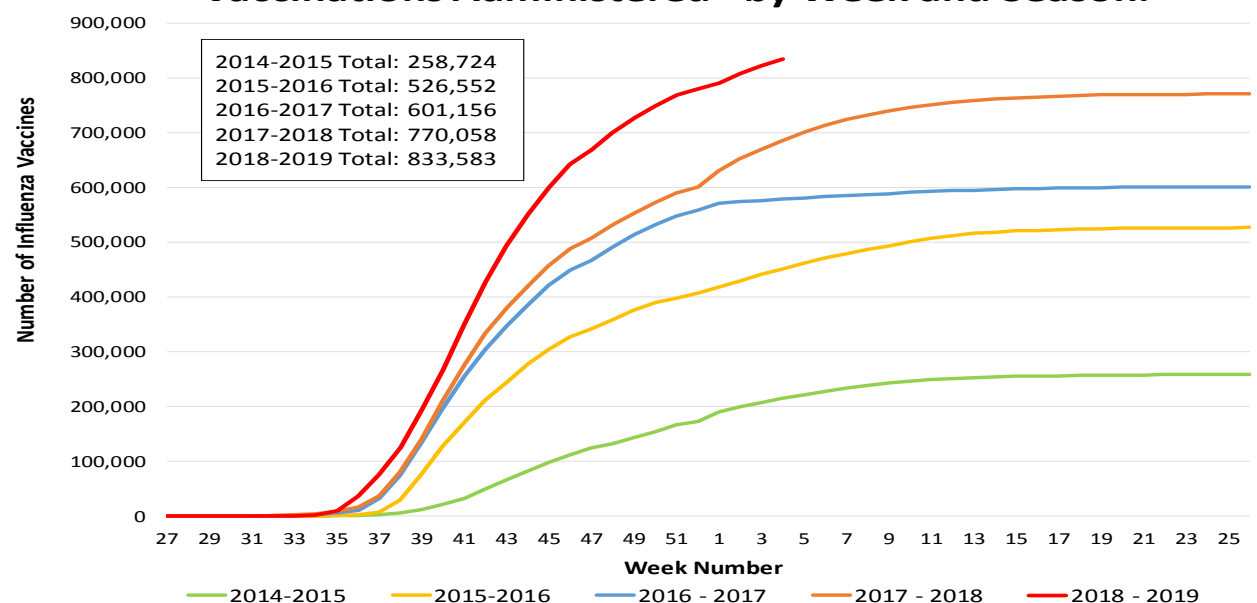
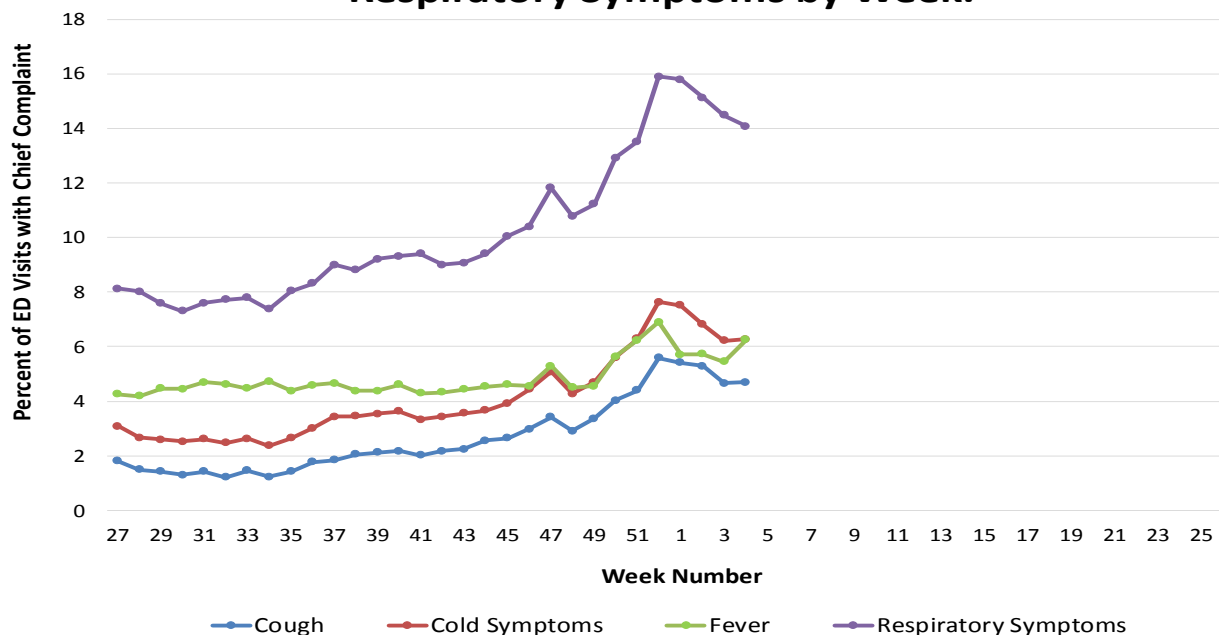
Figure 8. Influenza Deaths by Type and Season.

Figure 9. Influenza Deaths by Age and Season.


Figure 10. Number of Influenza Vaccinations Administered* by Week and Season.**Figure 11. Cumulative Number of Influenza Vaccinations Administered* by Week and Season.**

* Influenza vaccinations administered and entered into the San Diego Immunization Registry ([SDIR](#))

Figure 12. Percent of Emergency Department Visit Chief Complaints for Cough, Cold, Fever, or Respiratory Symptoms by Week.



Influenza Reporting in San Diego County

Local providers are encouraged to report laboratory-positive influenza detections to the County Epidemiology Program by **FAX (858) 715-6458**. Please fax a [Confidential Morbidity Report Form](#), or an [Influenza Case Report Form](#), and/or a printed laboratory result. If known, please indicate if the patient was admitted to ICU and/or died, and/or is a resident of a congregate living facility.

Regarding sending influenza specimens to [Public Health Laboratory](#) (PHL) for confirmation, please use the updated PHL [Test Request Form](#) and contact PHL at **(619) 692-8500** with any questions. Contact the Epidemiology Program by telephone **(619) 692-8499** or email to EpiDiv.HHSA@sdcounty.ca.gov with questions regarding influenza data.

Resources

County of San Diego Epidemiology Program website www.sdepi.org
 County of San Diego [2017-18 Influenza Season Summary](#)
 Current Week Influenza Watch [Slide Deck](#) – A slide presentation version of this report
 County of San Diego Immunization Program (SDIZ) www.sdiz.org

California Department of Public Health (CDPH) [Influenza Update](#)
 Centers for Disease Control and Prevention (CDC) [Influenza Surveillance](#)