

## Rady Children's Hospital Laboratory Pathogens Report

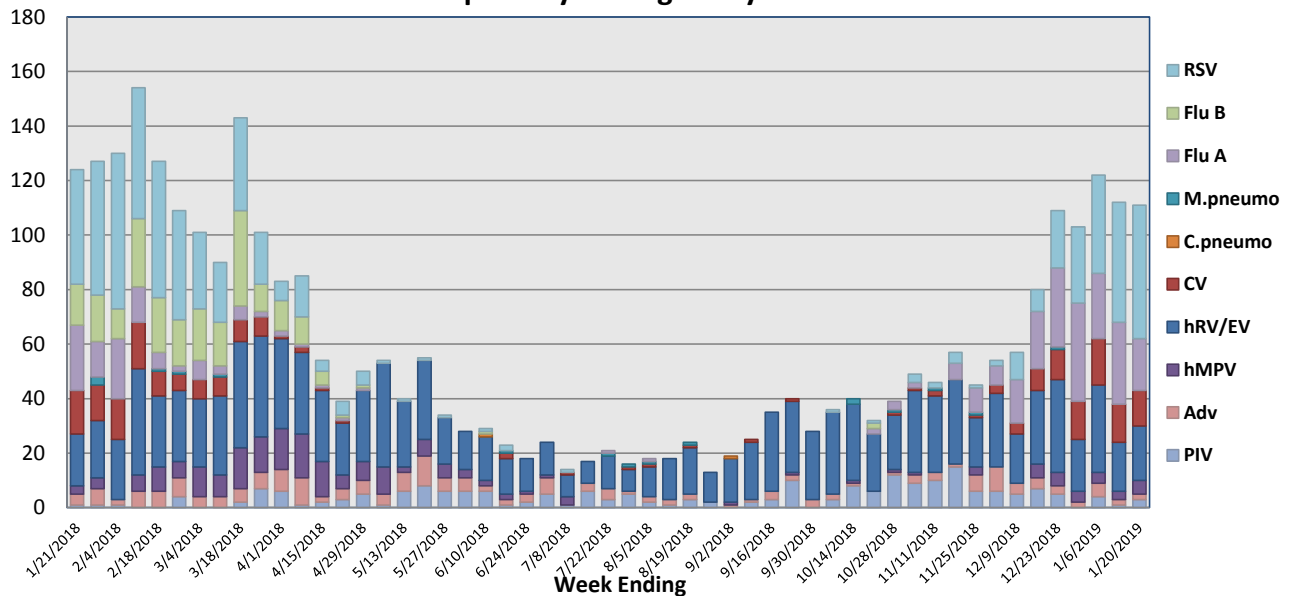
This report is a listing of selected pathogens detected at Rady Children's Hospital Laboratory. The report includes data from locally collected adult and pediatric specimens.

January 14-20, 2019

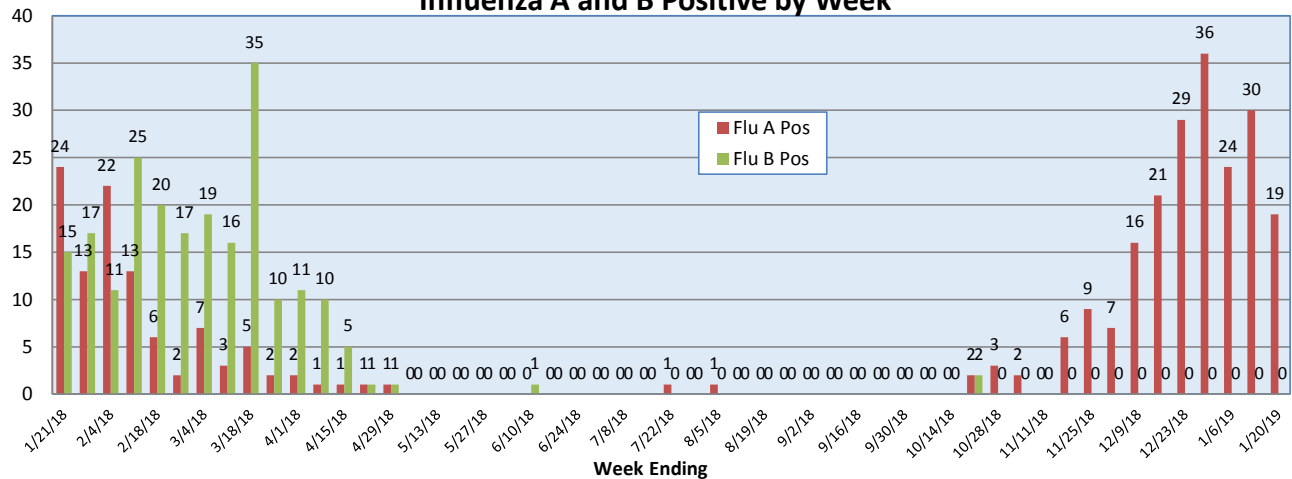
| Pathogen                     | Positive Tests<br>Current Week | Total Tests<br>Current Week | Positive Tests<br>YTD* |
|------------------------------|--------------------------------|-----------------------------|------------------------|
| RSV                          | 49                             | 179                         | 209                    |
| Influenza A                  | 19                             |                             | 204                    |
| Influenza B                  | 0                              |                             | 2                      |
| Parainfluenza                | 3                              | 95                          | 97                     |
| Adenovirus                   | 2                              |                             | 46                     |
| Human Rhinovirus/Enterovirus | 20                             |                             | 371                    |
| Human Metapneumovirus        | 5                              |                             | 32                     |
| Coronavirus                  | 13                             |                             | 89                     |
| Mycoplasma pneumoniae        | 0                              |                             | 6                      |
| Chlamydia pneumoniae         | 0                              |                             | 0                      |
| B. pertussis/parapertussis   | 1                              | 55                          | 23                     |
| Enterovirus, CSF             | 0                              | 4                           | 11                     |

\*From October 8, 2018

### Respiratory Pathogens by Week

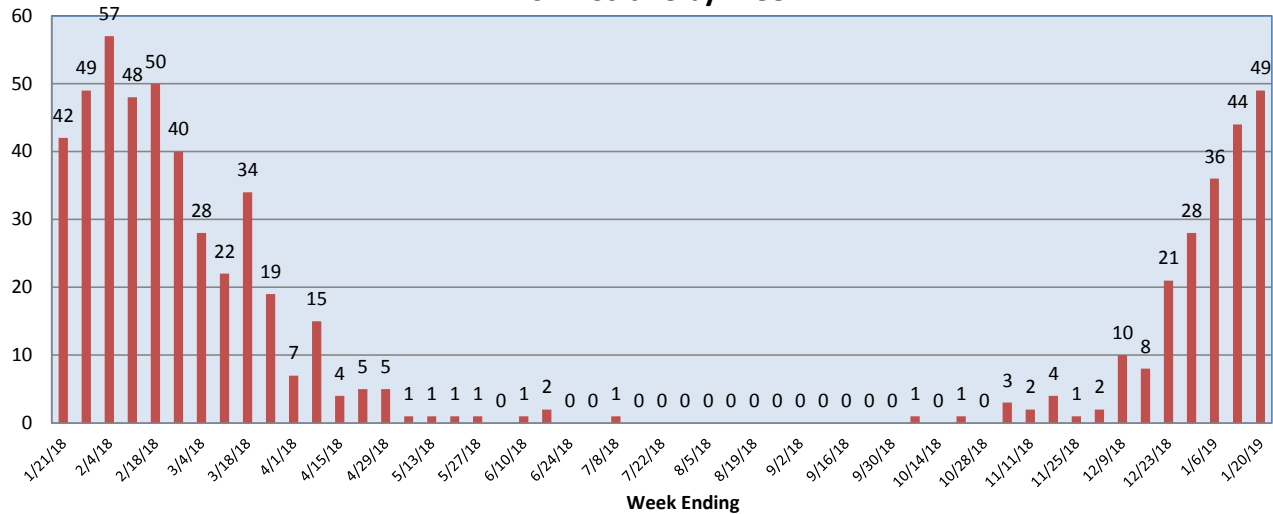


### Influenza A and B Positive by Week

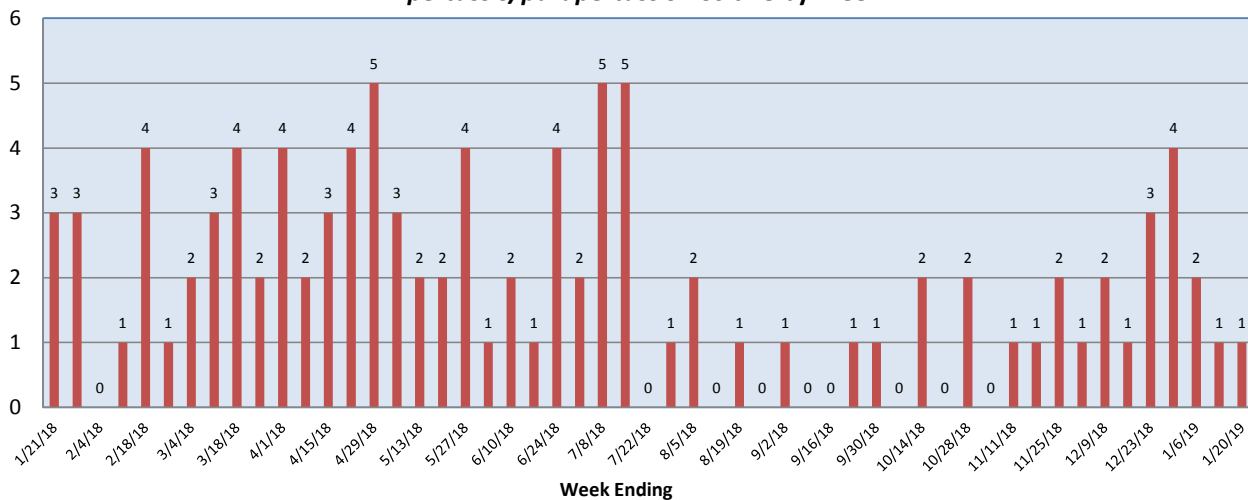


**Rady Children's Hospital Laboratory  
Pathogens Report**

**RSV Positive by Week**



***B. pertussis/parapertussis* Positive by Week**



**Enterovirus CSF Positive by Week**

