



INFLUENZA WATCH

Week 52
Ending 12/30/2017

The purpose of the weekly **Influenza Watch** is to summarize current influenza surveillance in San Diego County. **Please note that reported weekly data are preliminary and may change due to delayed submissions and additional laboratory results.**

Report Contents

Page 1: Overview & Indicators
Page 2: Virus Characteristics
Pages 3-7: Trend graphs
Page 7: Reporting Information

**Current
Week****Current Week 52 (ending 12/30/2017)**

- 3,334 new influenza detections reported: *Elevated level*
- 13% influenza-like-illness (ILI) among emergency department visits: *Elevated level*
- 33 new influenza-related deaths reported this week
- 61 new ICU cases reported this week
- 8% of deaths registered with pneumonia and/or influenza: *Expected level*

**Current
Season Summary****7,314**

Total Cases

98

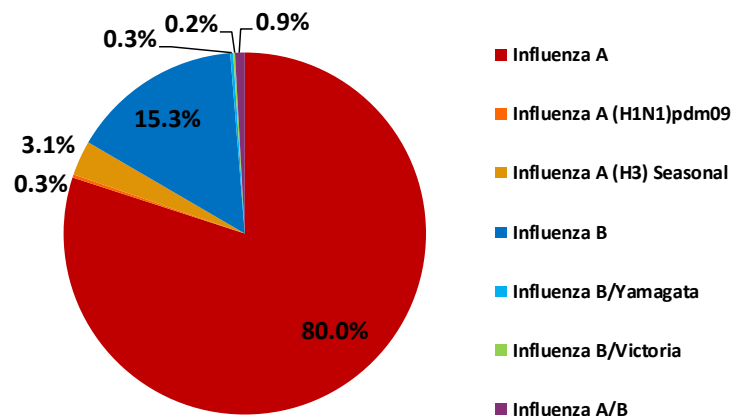
ICU Cases

44

Deaths

55

Outbreaks*

Virus Characteristics

* At least one case of laboratory-confirmed influenza in a setting experiencing ≥ 2 cases of influenza like illness (ILI) within a 72-hour period.

Table 1. Influenza Surveillance Indicators

Indicator	FY 2017-18*			FY 2016-17		Prior 3-Year Average**	
	Week 52	Week 51	FYTD#	Week 52	FYTD#	Week 52	FYTD#
All influenza detections reported (rapid or PCR)	3,334	2,338	7,314	284	883	182	588
Percent of emergency department visits for ILI	13%	9%		4%		5%	
Percent of deaths registered with pneumonia and/or influenza	8%	6%		7%		6%	
Number of influenza-related deaths reported^	33	6	44	1	5	1	3

* FYTD=Fiscal Year To Date (FY is July 1 - June 30, Weeks 27-26). Total deaths reported in prior years: 87 in 2016-17, 68 in 2015-16, and 97 in 2014-15.

* Previous weeks case counts or percentages may change due to delayed processing or reporting.

** Includes FYs 2014-15, 2015-16, and 2016-17.

^ Current FY deaths are shown by week of report; by week of death for prior FYs.

San Diego Influenza Cases Spike

A record number of influenza reports were received last week in San Diego, reflecting better testing and surveillance systems in the region and an influenza season that is more severe than in recent years. The County of San Diego Health and Human Services Agency is closely monitoring the impact of influenza on local healthcare capacity and utilization. Local healthcare systems are currently effectively managing the increased workload.

Three important actions to reduce the local impact of influenza are:

- Vaccinate everyone over six months of age who has not yet received the annual influenza shot. It's not too late to be vaccinated!
- Practice everyday preventive steps to stop the spread of influenza. Avoid close contact with anyone who is ill and remain at home when sick for at least 24 hours after fever is gone. See [everyday preventive actions](#) and [non-pharmaceutical interventions](#) for more information about actions individuals and communities can take to stop the spread of influenza.
- Use antiviral medications for influenza using the Centers for Disease Control and Prevention [guidelines](#). Patients should check with local pharmacies about the availability of influenza antiviral medications. Although the supply of these medications are adequate overall, individual pharmacies may not have supply due to increased demand. Providers who have supply issues should inform the County Epidemiology Program during normal working hours at 619-692-8499.

Table 2. Influenza Detections Reported, FY 2017-18*

Positive Test Type/Subtype	Week 52	Total FY-To-Date
Influenza A†	2,810	5,852
Influenza A(H1N1) Pandemic 2009	7	21
Influenza A (H3) Seasonal	13	227
Influenza B†	481	1,120
Influenza B/Victoria	0	12
Influenza B/Yamagata	0	19
Influenza A/B†	23	63
Total	3,334	7,314

* FY is July 1 - June 30.

† No further characterization performed, or results were not yet available at time of publication.

Note: Totals may change due to further laboratory findings.

Figure 1. Percent of Emergency Department Visits for Influenza-like Illness by Week and FY

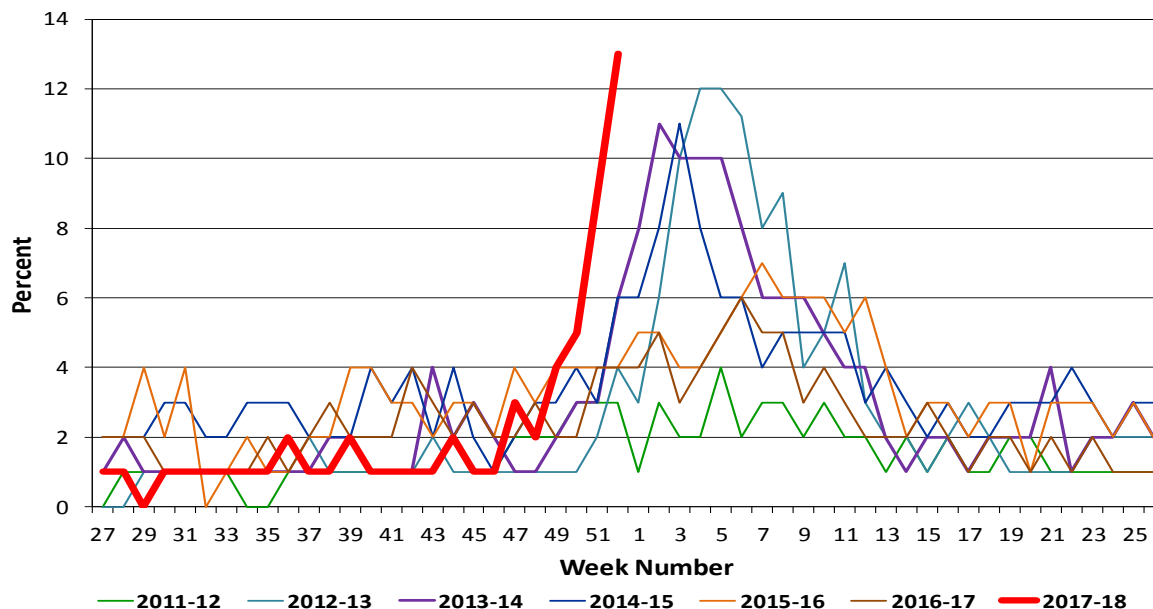


Figure 2. San Diego County Influenza Detections by Type and Week of Report, 2017-18 FYTD (N=7,314)

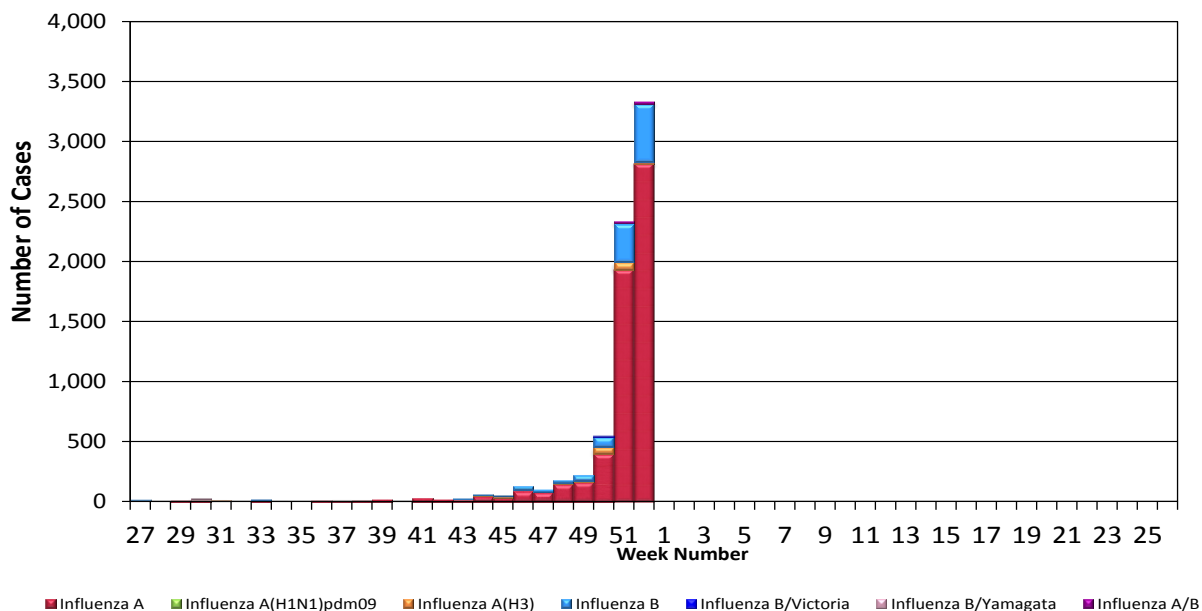


Figure 3. Percent of Reported Influenza Cases by Age Group and Season, 2011-12 to 2017-18 FYTD

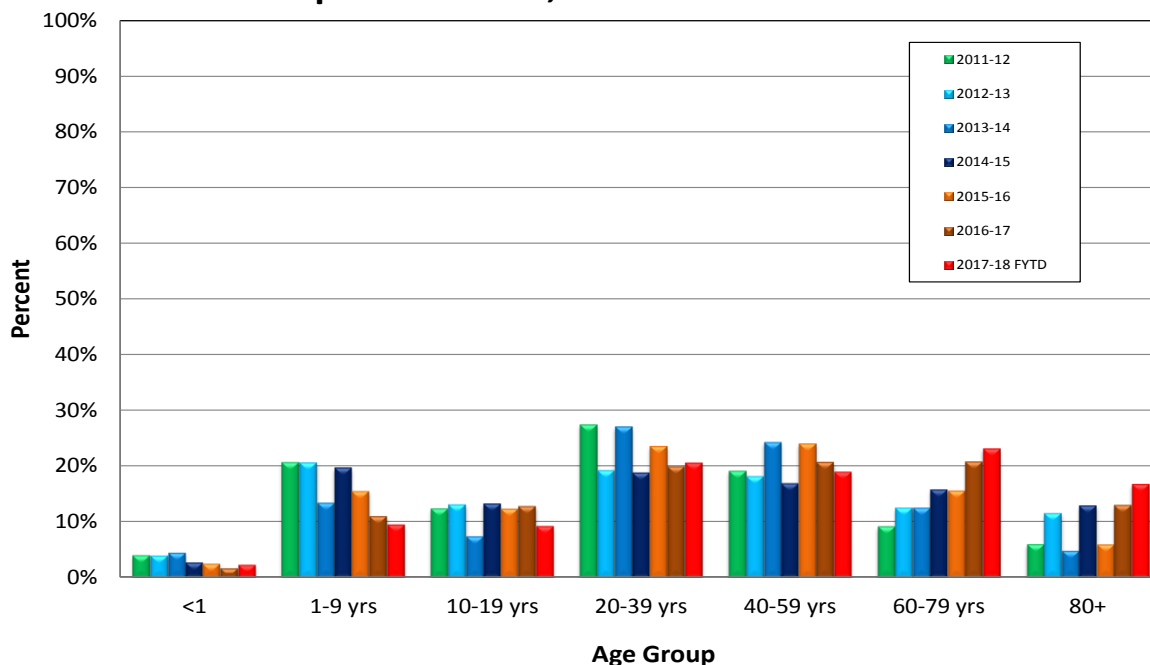


Figure 4. Cumulative Influenza Case Reports by Episode Week & Season

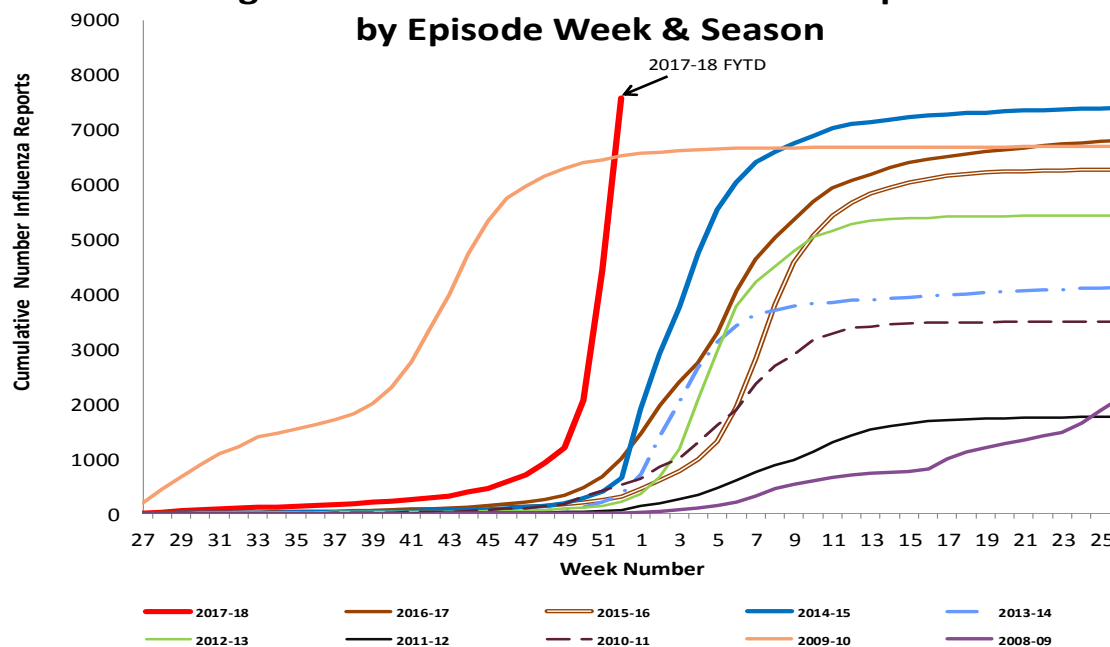


Figure 5. Percent of San Diego County Emergency Department Visits for Influenza-like Illness by Week and FY Compared to 5-Year Baseline & Upper 95% Threshold Values (Serfling Method)

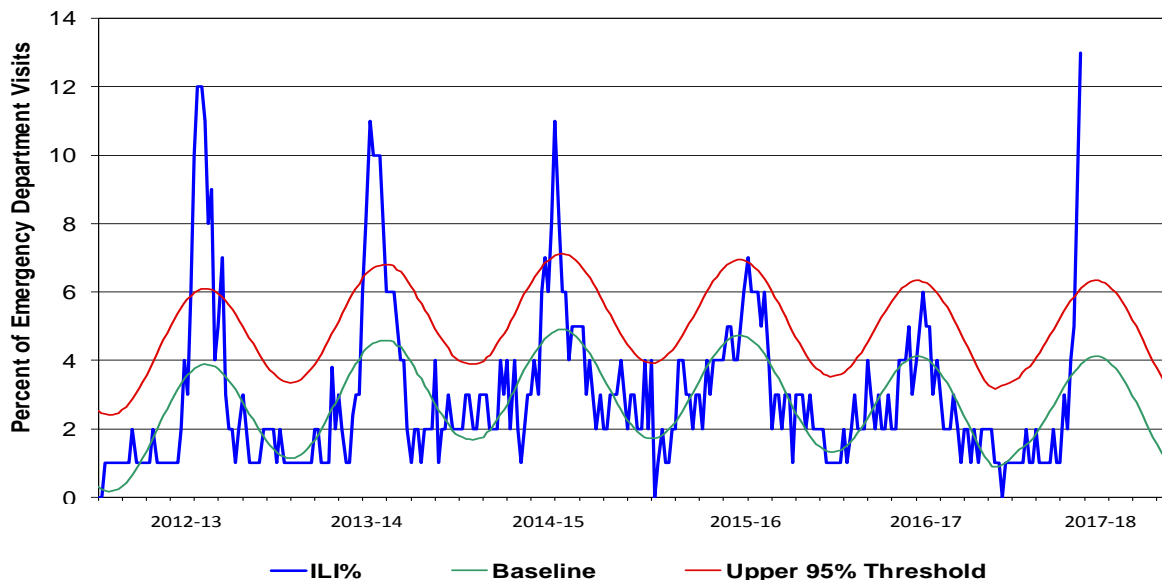


Figure 6. Percent of San Diego County Deaths Registered with Pneumonia and/or Influenza by Week and FY Compared to Prior 5-Year Baseline & Upper 95% Threshold Values (Serfling Method)

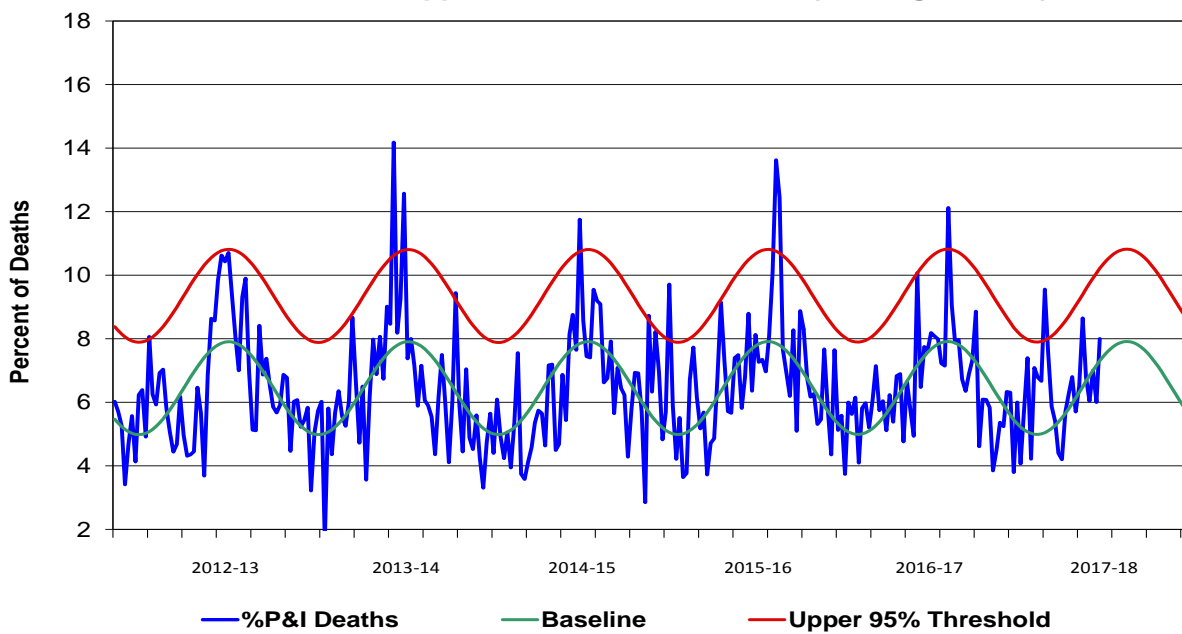


Figure 7. Influenza Deaths by Type and Season

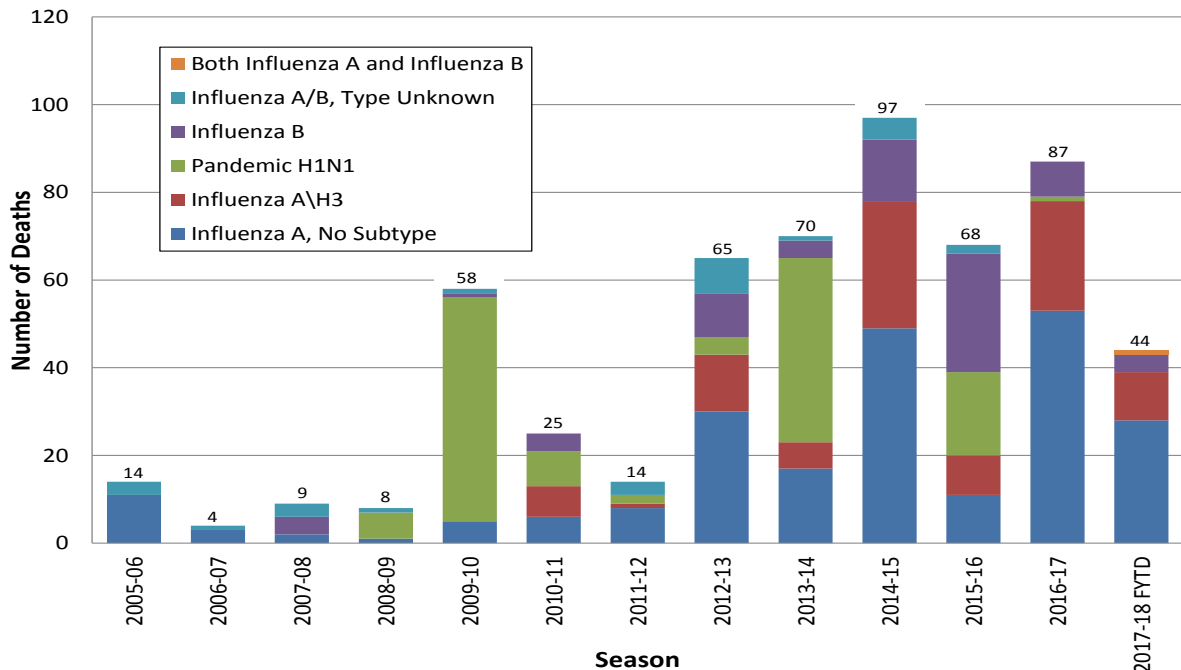


Figure 8. Influenza Deaths by Age and Season

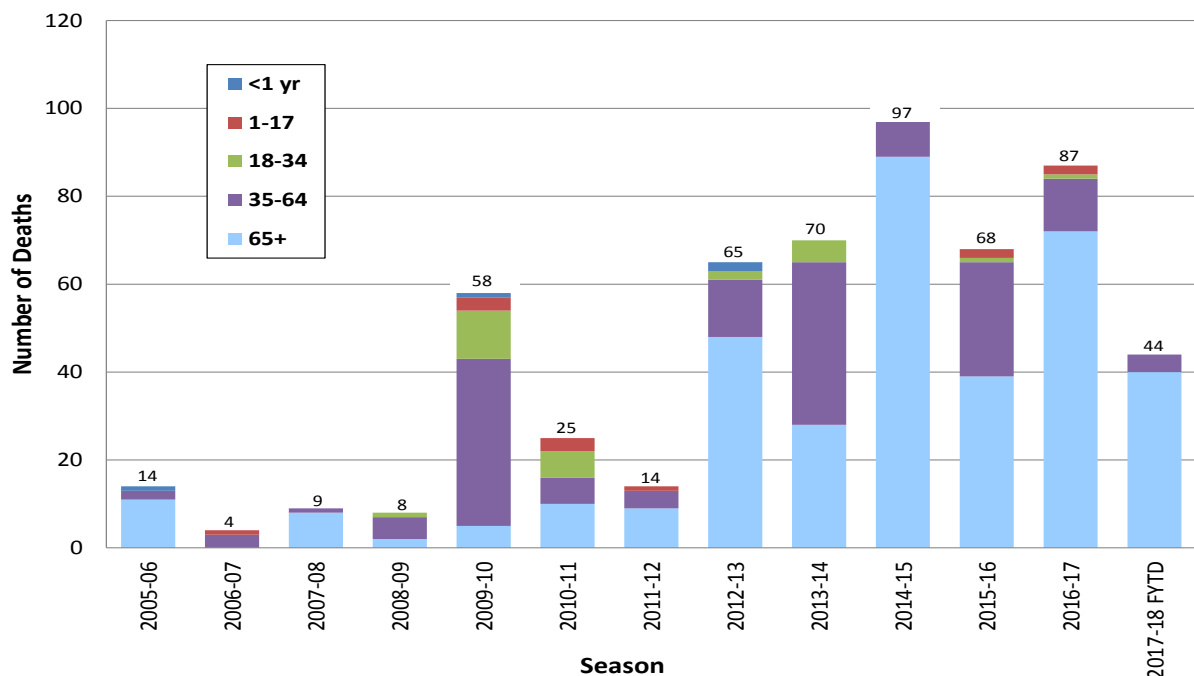
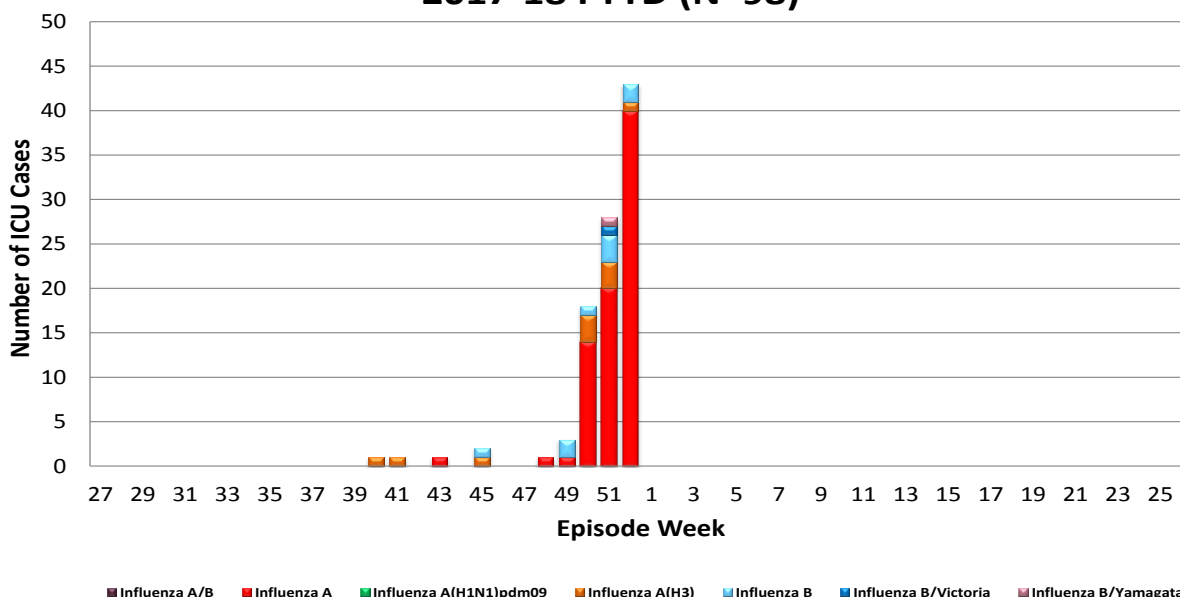


Figure 9. Number of Influenza Cases Requiring ICU Care by Episode Week and Type of Influenza, 2017-18 FYTD (N=98)



Episode week is the week of symptom onset, or earliest available date in which the case is identified.

Influenza Reporting in San Diego County

Local providers are encouraged to report laboratory positive influenza detections to the County Epidemiology Program by **FAX (858) 715-6458**. Please fax a [Case Report](#) Form and/or a printed laboratory result, and indicate if the patient was admitted to ICU or died, and/or is a resident of a congregate living facility.

For questions regarding sending specimens to Public Health Laboratory (PHL), call (619) 692-8500. Click here for the updated PHL [PCR Test Request Form](#). Contact the Epidemiology Program with any questions at **(619) 692-8499** or by email to: EpiDiv.HHSA@sdcounty.ca.gov.

Resources

San Diego County Influenza Surveillance Weekly [Slide Deck](#) - presentation version of this report

County of San Diego Immunization Program www.sdiz.org

California Department of Public Health [Influenza](#)

Centers for Disease Control and Prevention Influenza Surveillance [Weekly Report](#)